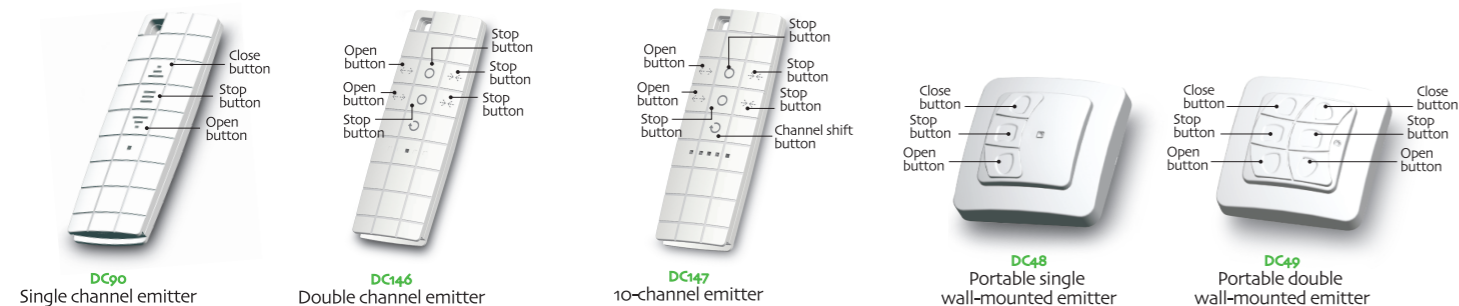
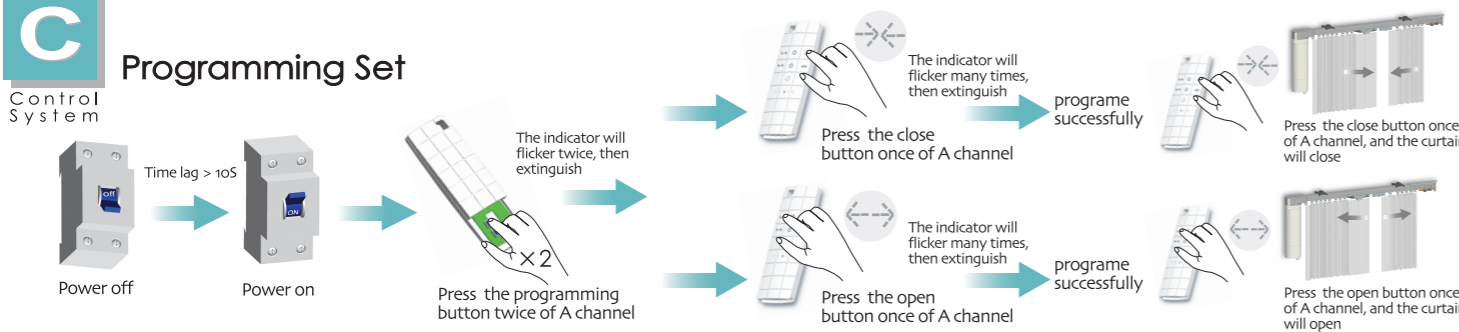




Common emitters for curtain motor

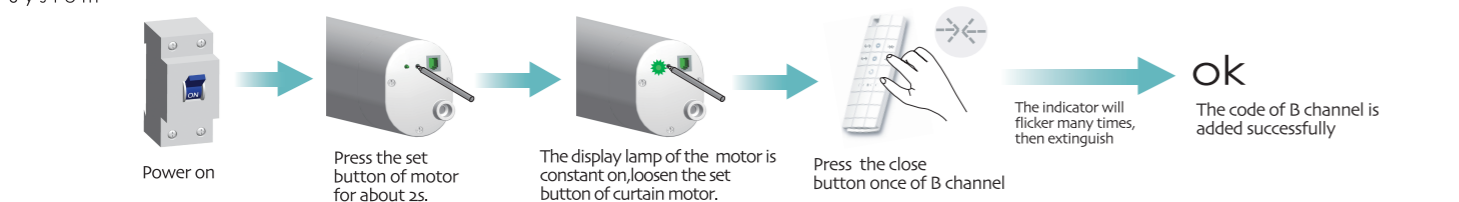


Programming Set

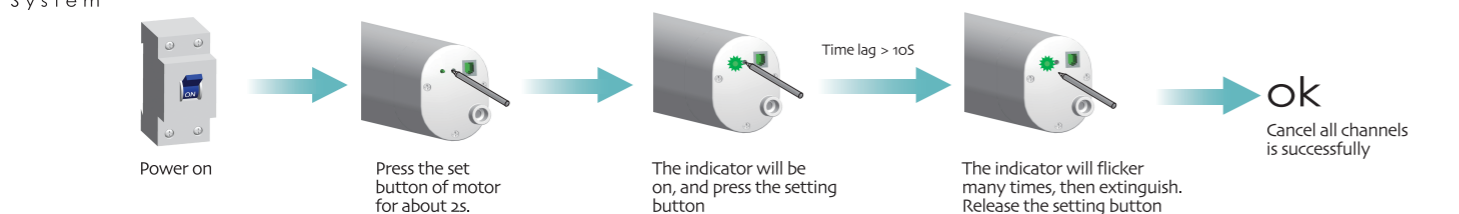


Code adding

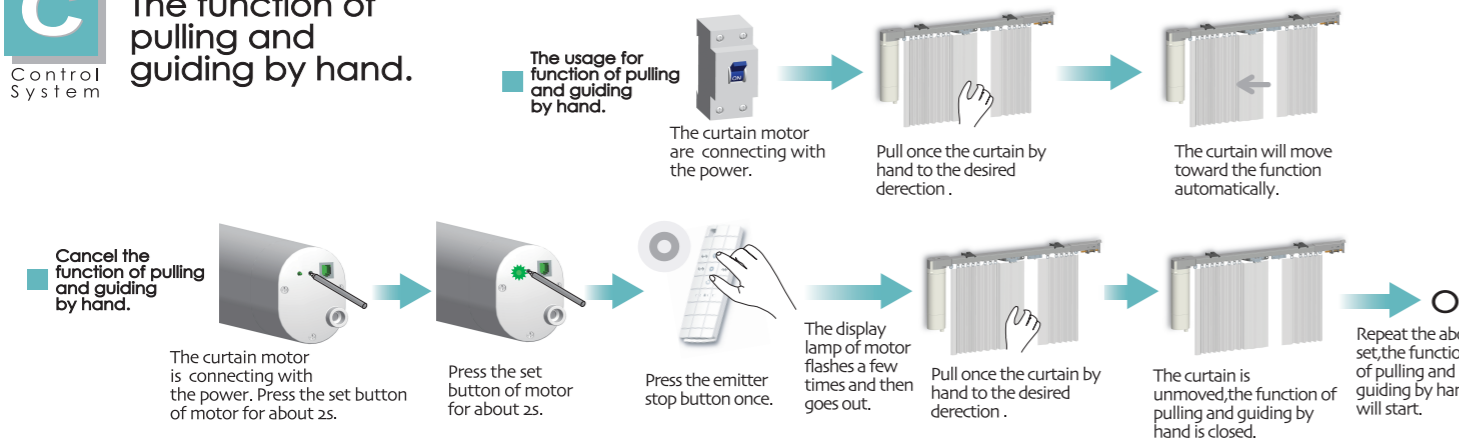
After the programming, then we can add code



Cancel all channels



The function of pulling and guiding by hand.



Electronic
Electronic Limit + Built-in Receiver +
Resistance and stop function + Touch-start



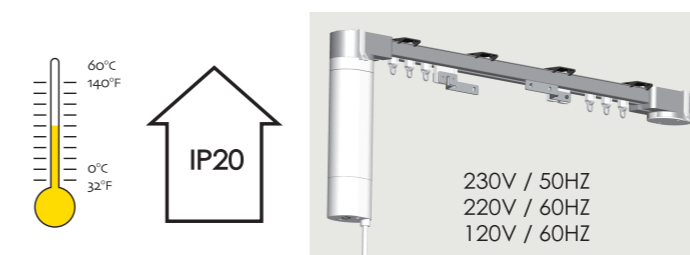
DT52E Curtain Motor Specification

File No: SMS902-15
Version No.: A/05



Product characteristics

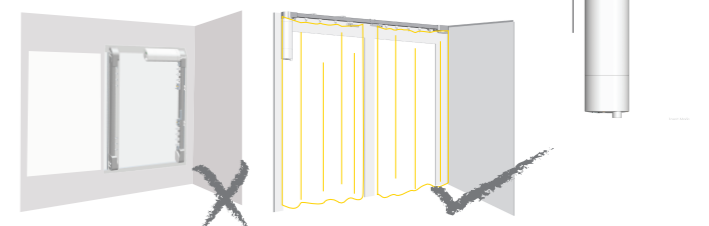
Pls read the instruction before assembly



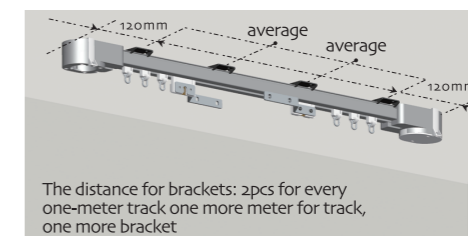
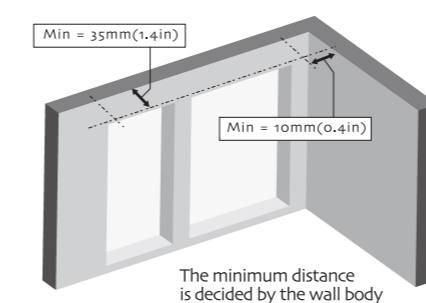
Notes

Don't use the motorized curtain system vertically or unflatly

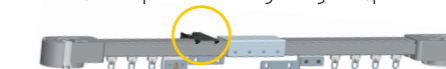
Assembly the motorized curtain system horizontally



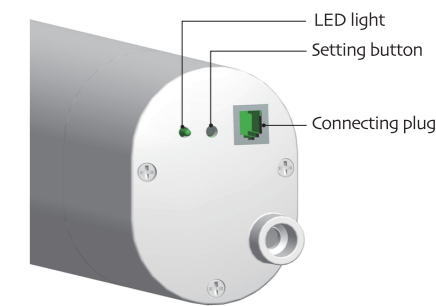
Assembly dimension



Bracket is required for the engraving track point



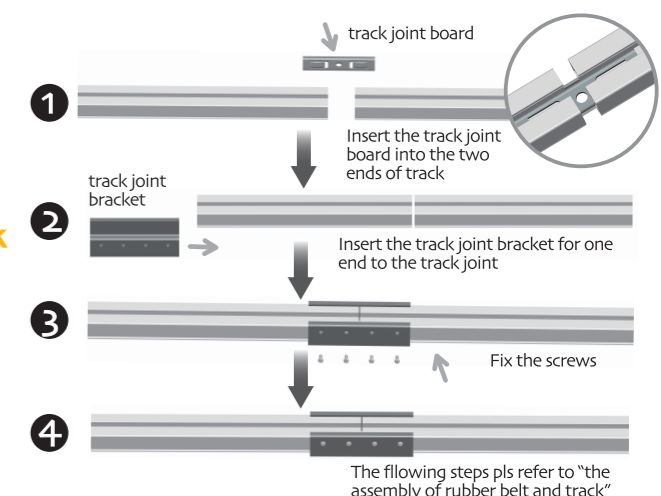
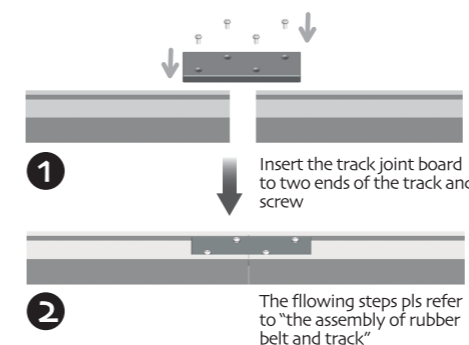
Inspection for motor buttons



The joint assembly of track

Note

- The track needs to be engrafted when the length is less the required
- The track needs to be engrafted when inconvenient to transport





The assembly of rubber belt for curtain motor

1 The confirmation of profiled material dimension

S track The length of profiled material = The total length of track - 15.8cm

A track The length of profiled material = The total length of track - 15.8cm

e.g.

For example (S track): the total length of track is 2M
184.2cm
The length of profiled material (S track):
200cm - 15.8cm = 184.2cm

2 The confirmation of rubber belt dimension

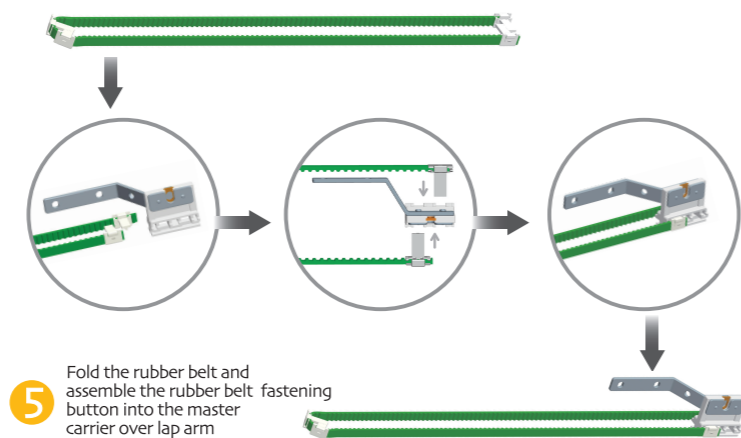
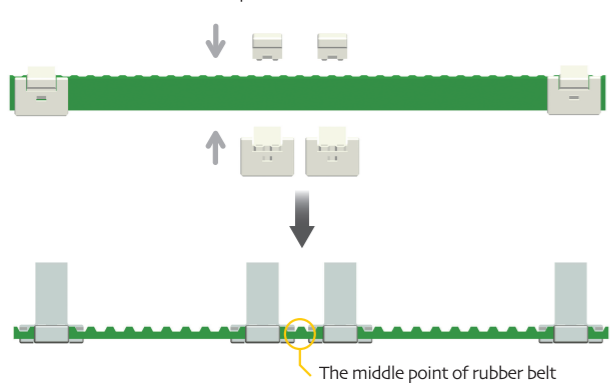
S track The length of rubber belt = (The total length of track x 2) - 4.5cm

A track The length of rubber belt = (The total length of track x 2) - 5.5cm

The length of rubber belt (S track): (200cm x 2) - 4.5cm = 395.5cm

Note: Pls cut through the middle of gear apex

4 Pls leave one gear at middle of two rubber belt fastening button when assemble rubber belt fastening button at the middle point of rubber belt



5 Fold the rubber belt and assemble the rubber belt fastening button into the master carrier over lap arm

3 Pls leave half gear at both ends when assemble rubber belt fastening button



The assembly of rubber belt fastening button



Folding Method for Joint Track (for easy transit)

Track Folding Method

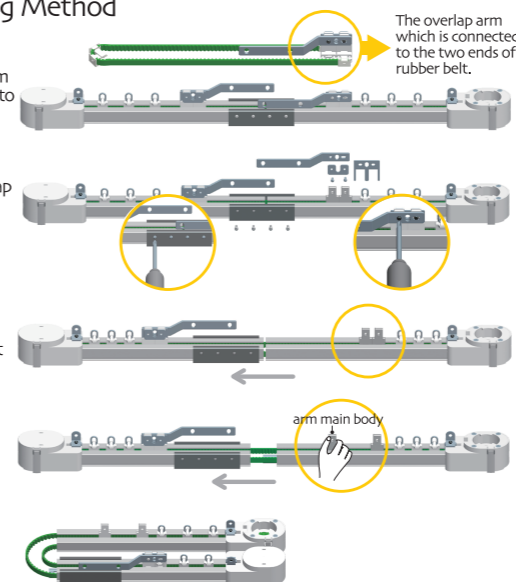
1 Find the overlap arm which is connected to the two ends of rubber belt.

2 Screw off the overlap arm and track connection bracket.

3 Push track connection bracket to one end.

4 Move the overlap arm main body by hand gently, simultaneously undraw the track joint point.

5 Fold the track.



Restoring the track

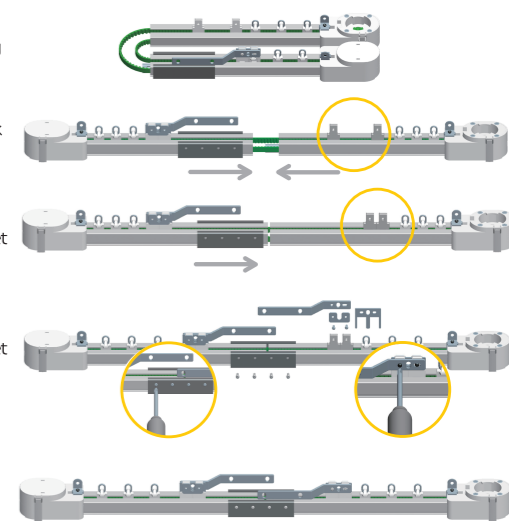
1 Unfold the folding track

2 Combine the track gently

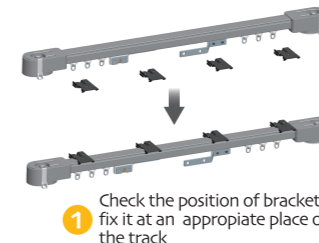
3 Push the track connection bracket to the joint point.

4 PScrew the track connection bracket and mount the overlap arm.

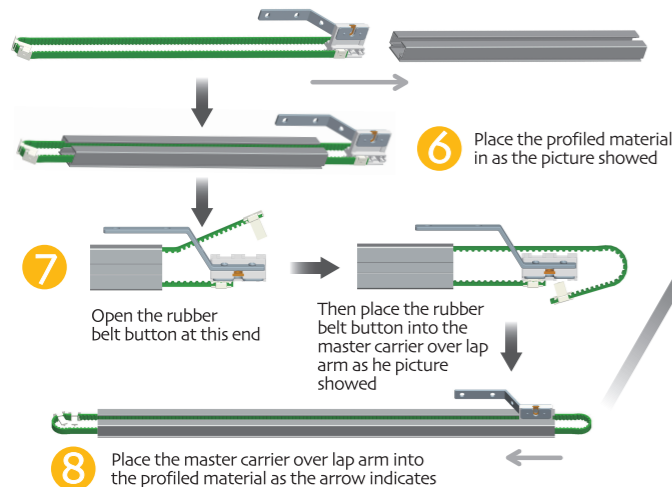
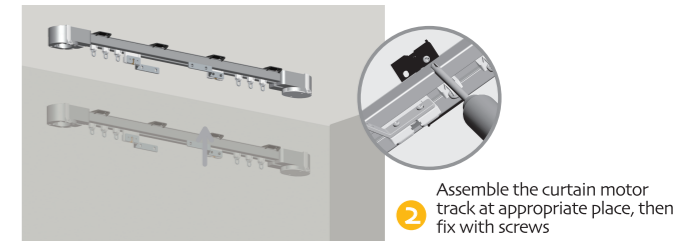
5 Restoring the track is finished.



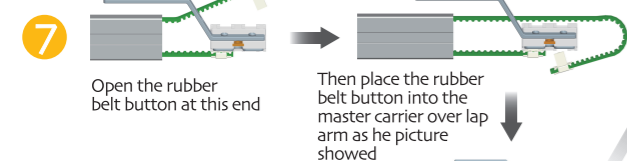
The installation for curtain motor and cable



1 Check the position of brackets, fix it at an appropriate place on the track

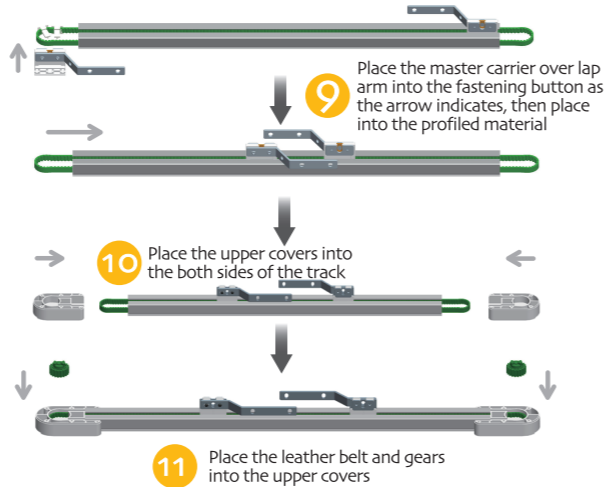


6 Place the profiled material in as the picture showed



Open the rubber belt button at this end
Then place the rubber belt button into the master carrier over lap arm as the picture showed

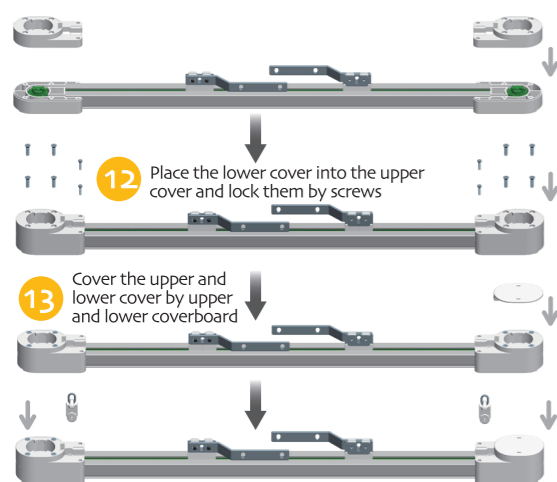
8 Place the master carrier over lap arm into the profiled material as the arrow indicates



9 Place the master carrier over lap arm into the fastening button as the arrow indicates, then place into the profiled material

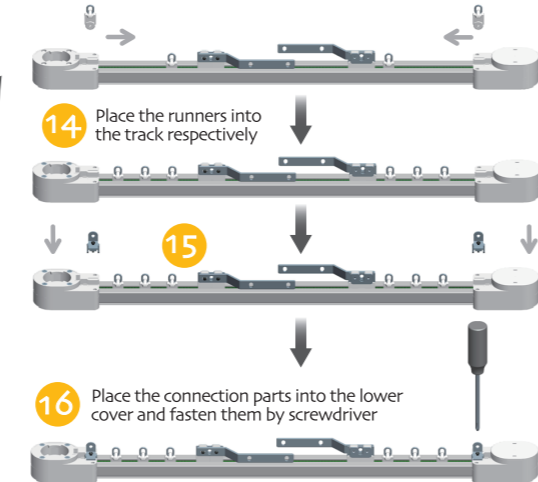
10 Place the upper covers into the both sides of the track

11 Place the leather belt and gears into the upper covers



12 Place the lower cover into the upper cover and lock them by screws

13 Cover the upper and lower cover by upper and lower coverboard



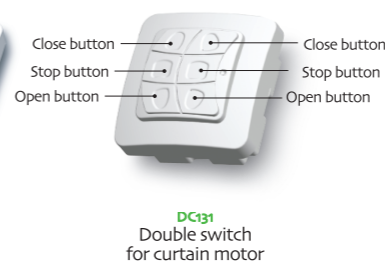
14 Place the runners into the track respectively

15

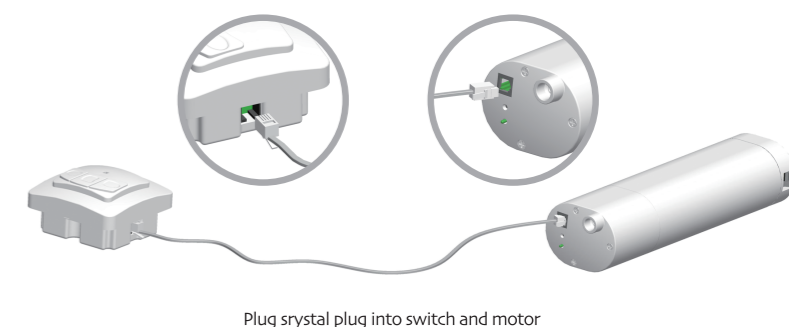
16 Place the connection parts into the lower cover and fasten them by screwdriver



Common switches for curtain motor



Switch installation of curtain motor



Plug crystal plug into switch and motor