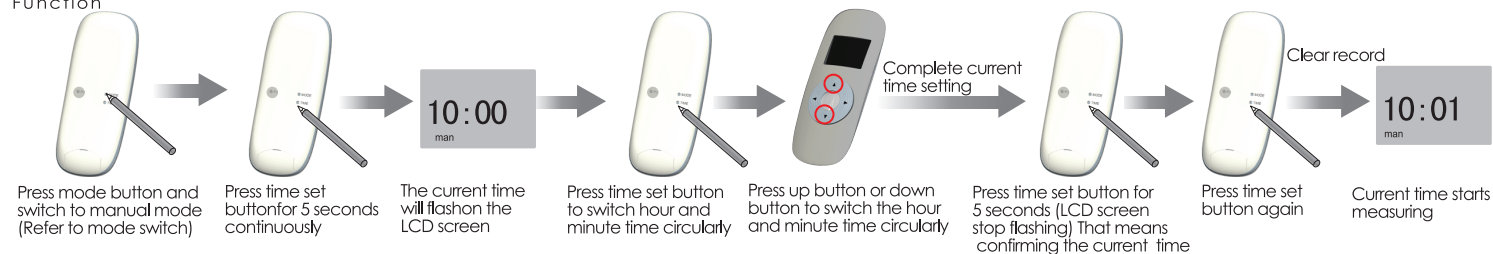




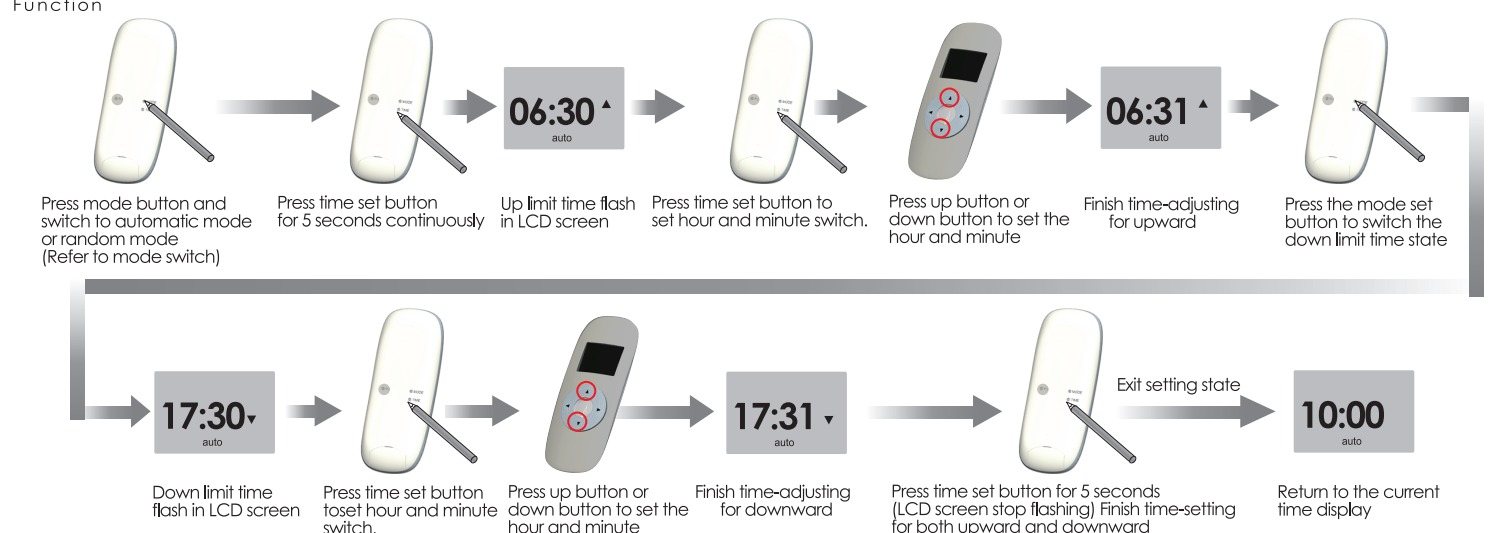
The Current Time Setting

Additional Function



Time Setting

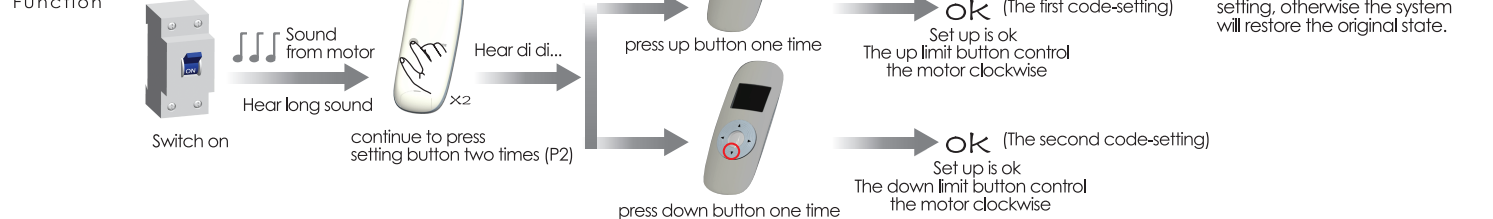
Additional Function



Matchable R Tubular Motor Set up

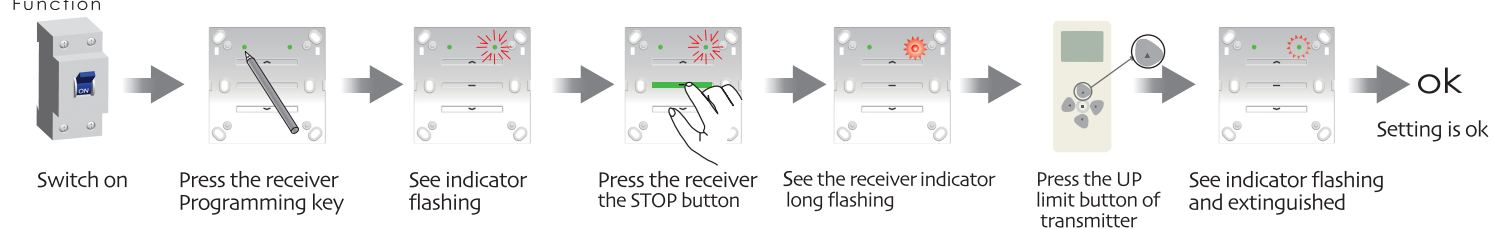
(Only Manual mode is valid)

Additional Function



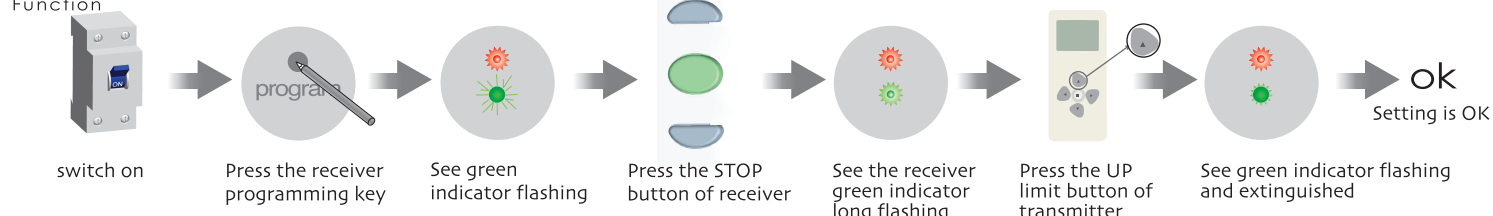
Matchable DC227/DC228 Tubular Motor Set up

Additional Function



Matchable DC136 Tubular Motor Set up

Additional Function



All controls support 433MHz & 868MHz

Control System

DC920 5-channel timing emitter Specification

Version No. : A/00



Technical Support

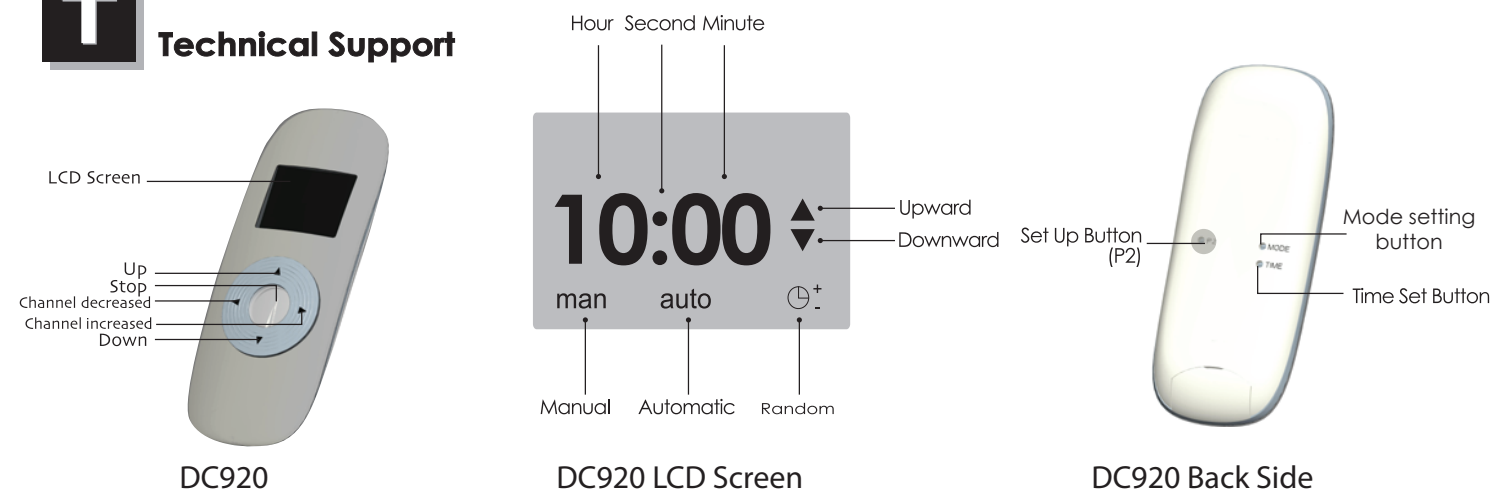
- Input voltage: 3V (CR2430)
- Transmitting frequency: 433.92MHz
- Transmitting power: 10 milliwatt
- Operating temperature: $-10^{\circ}\text{C} - +50^{\circ}\text{C}$
- Transmission distance: 200 meters open Office
35 meters on two walls

- Up button: control motor upward
- Down button: control motor downward
- Stop button: control motor stop
- Set up button: features settings for the motor (effective for Radio motor)
- Mode set button: For switch motor mode
- Time set button: for adjust the internal time of transmitter

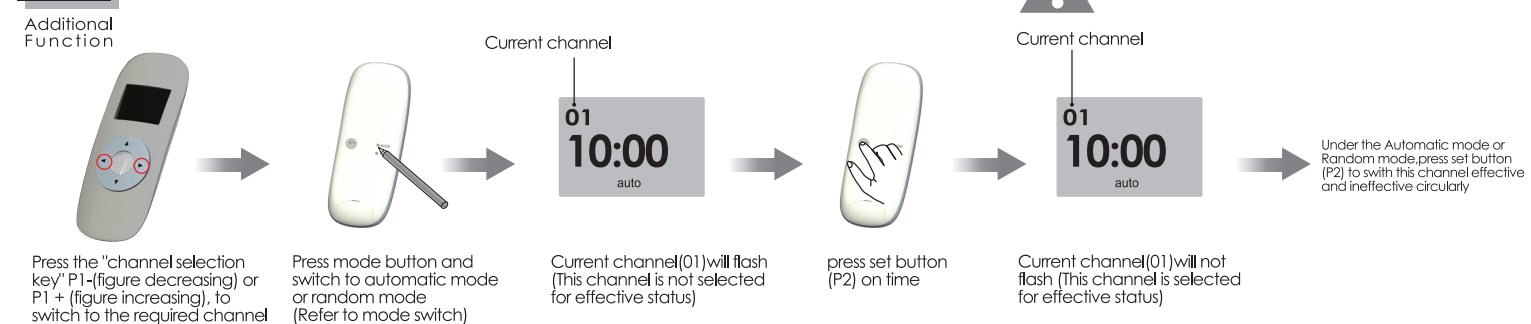
Note: The time difference between setting up limit time and down limit cannot be less than 32 minutes. Otherwise the Error will show on the LCD screen of transmitter under Automatic mode and Random mode. Simultaneously, Time set is invalid, and set status is exited.



Technical Support



Effective channel selection



Mode Switch

