

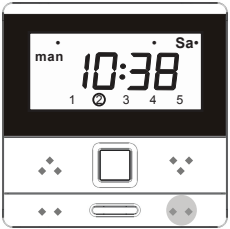


Additional
Function

Effective channel selection



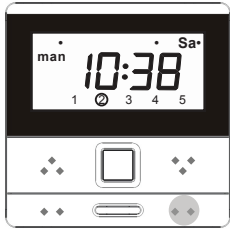
Long press" channel-increase" button repeatedly for about 5 seconds
Switch circularly for effective channel or ineffective channel



Press "Channel-increase" button or
"Channel-decrease" button to switch
the desired channel



Long press "Channel-increase" button
for about 5 seconds, channel indicator blinks,
channel selection is ineffective



Long press "Channel-increase" button
for about 5 seconds, channel indicator blinks,
channel selection is effective

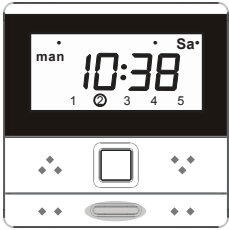


Additional
Function

Mode switching



Long press Setting button repeatedly for about 2
seconds, mode can be switched circularly.



Long press Setting button for about
2 seconds, switch to manual mode



Long press Setting button for about
2 seconds, switch to automatic mode



Long press Setting button for about
2 seconds, switch to random mode

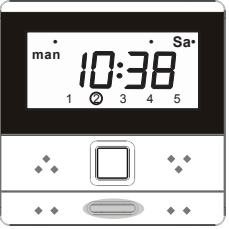


Additional
Function

The Current Time Setting



Present time can be adjusted under
Manual mode of any channel.



Long press"set ting button" for
2 seconds, switch to manual mode



Long press"Channel-decrease
button"for 5 seconds, "hour mark"
twinkles.



Press "up button" or "down
button", can adjust hour.



Press"Channel-decrease button"
until the"minute mark" twinkles.



Press "up button" or "down
button", can adjust minute.



Press"Channel-decrease button"
until the"week mark" twinkles.



Press "up button" or "down
button", can adjust week.



Press "Channel-increase button"
to confirm the current time.



Additional
Function

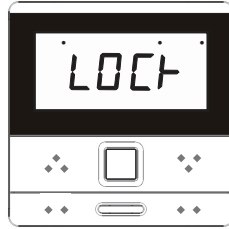
Self-lock function



Simultaneously press "Channel-decrease
button" and "Channel-increase button"
repeatedly for 3 seconds, self-lock function exit.



Simultaneously press"Channel-
decrease button" and"Channel-
increase button" for 3 seconds



The display screen will show
"lock", the self-lock function
starts and the button is
ineffective.



All controls support 433MHz & 868MHz

Control System

DC447(A)/DC448(A)/DC450(A) Timer emitter Specification

Version No: A/o 2



Technical Support

- Input voltage: 3V(CR2430)
- Transmitting frequency: 433.92MHz
- Transmitting power: 10 milliwatt
- Operating temperature: -20°C ~ +55°C
- Transmission distance: 200 meters open office
35 meters on two walls

- Up button: Control motor upward and Time increase
- Down button: Control motor downward and Time decrease
- Stop button: Control motor stop and Exit time set
- Channel-decrease button: control the decrease of channels and time setting
- Channel-increase button: control the increase of channels
and switch timer function workable or unworkable
- Setting button: Setting button(R type motors workable)
and Mode adjustment.

DC447, DC448, DC450 are five-channel timer emitter, a number within the circle showed on LCD represents one channel. Press "Channel-increase" button and "Channel-decrease" button can switch the channels. And so on, press "Stop button" when switched to the desired number, then this channel will be the present channel. Like 1 2 3 4 5, the present channel will be 2nd channel.

DC447, DC448, DC450 are 50*50 case series, DC447A, DC448A, DC450A are 86*86 case series.

1 When the LCD shows 1 2 3 4 5, it means "Group control" channel. Operations of group control are listed as below:

Manual mode under Group control(1 2 3 4 5) channel---Group control button can control the motors of all the channels running. Group control timing is not workable.

Automatic mode under Group control(1 2 3 4 5) channel---Group control button can control the motors of all the channels running. when the channel is not selected as effective (please refer to effective channel selection). Timing function is not workable when the channel is selected as effective (please refer to effective channel selection). Timing function will control the motors on time.

Random mode under Group control(1 2 3 4 5) channel---Group control button can control the motors of all the channels running. Timing function is not workable when the channel is not selected as effective (please refer to effective channel selection). Timing function is workable when the channel is selected as effective (please refer to effective channel selection). Timing function can control the motors randomly with +15 minutes.

2 When LDC is switched to show one number within the circle (1 2 3 4 5), it means Channel 2 is a Common channel. Operation of the Common channel are listed as below:

Manual mode under Common channel---The buttons can control the motor running under this channel. Timer function is not workable.

Automatic mode under Common channel---The buttons can control the motor running under this channel. Timing function is not workable when the channel is not selected as effective (please refer to effective channel selection). Timing function is workable when the channel is selected as effective (please refer to effective channel selection). Timing function will control the motors on time.

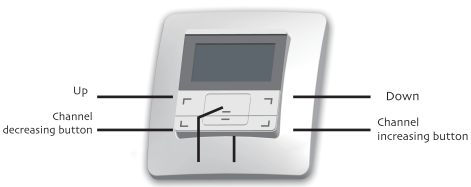
Random mode under Common channel---The buttons can control the motor running under this channel. Timing function is not workable when the channel is not selected as effective (please refer to effective channel selection). Timing function is workable when the channel is selected as effective (please refer to effective channel selection). Timing function can control the motors randomly with +15 minutes.

Note1: The time duration between Upward timer setting and Downward timer setting should be more than 32 minutes, or there will be errors (Erol) on the LCD when the emitter under Automatic mode and Random mode. Timer function is unworkable at the same time, and the system will exit from Setting state.

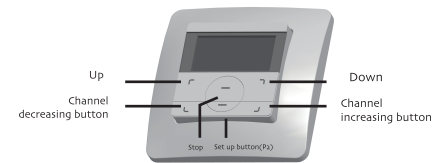
Note2: There is no timing setting under Group control channel



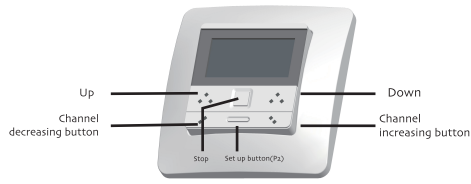
Technical Support



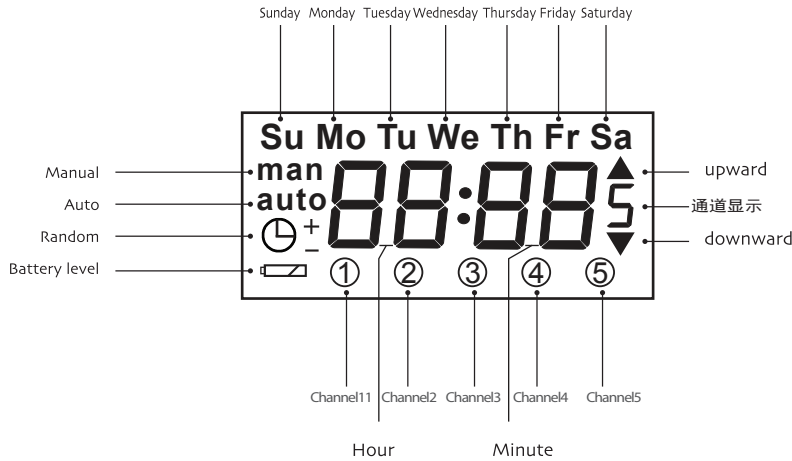
DC450



DC448



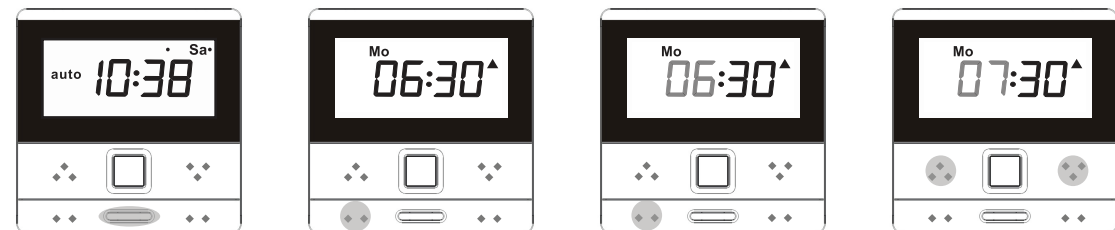
DC447



DC450 DC448 DC447 LCD Screen

Time Setting

Additional Function

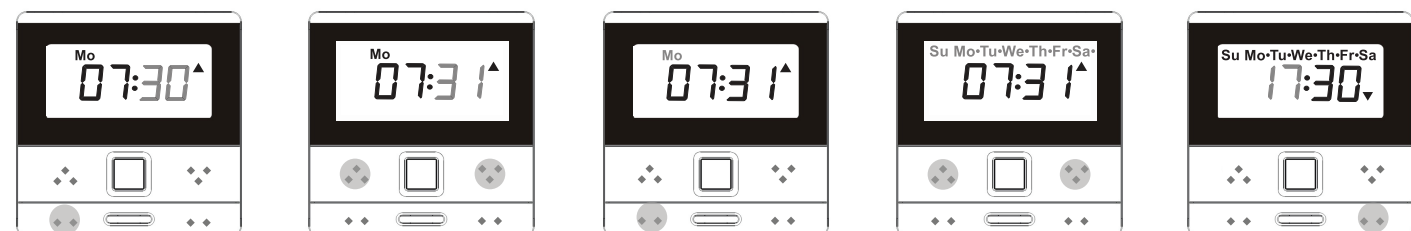


Press "setting button" for 2 seconds to switch to Auto mode or Random mode.

Press "Channel-decrease" button for 5 seconds, the up timing time displays.

Press "Channel-decrease" button again, the up timing time (hour mark) twinkles.

Press "up button" or "down button" to adjust the timing time (hour mark) of display



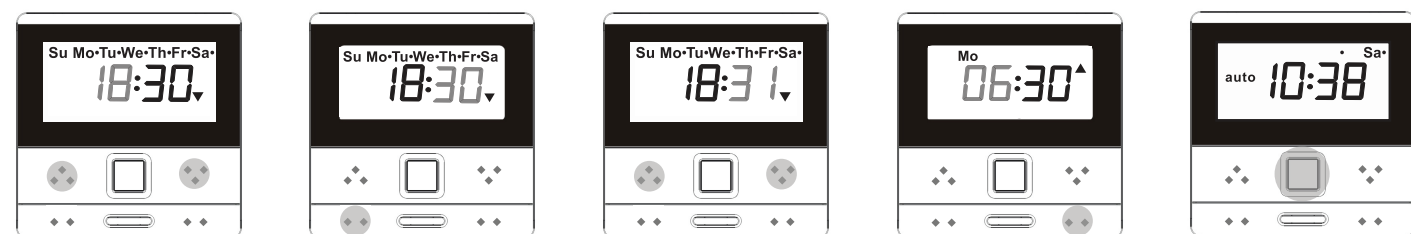
Press "Channel-decrease" button, the up timing time (minute mark) of this channel twinkles.

Press "up button" or "down button" to adjust the timing time (minute mark) of display screen.

Press "Channel-decrease" button, the up timing time (week mark) of this channel twinkles.

Press "up button" or "down button" to adjust the timing time (week mark) of display

Press "Channel-increase" button to confirm the up timing time of this channel. In the meantime the down timing time (hour mark) twinkles.



Press "up button" or "down button" to adjust the timing time (hour mark) of display screen

Press "Channel-decrease" button, the down timing time (minute mark) of this channel twinkles.

Press "up button" or "down button" to adjust the down timing time (minute mark) of display screen.

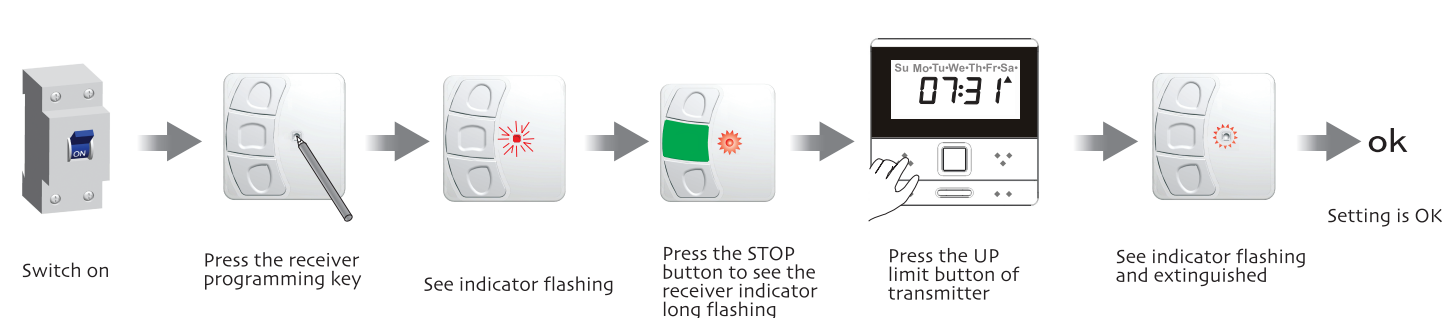
Press "Channel-increase" button to confirm the down timing time of this channel. In the meantime the down timing time (hour mark) twinkles.

Press "stop button", exit the adjustment of the timing time and back to present channel and present time.

! Each channel can set timer function separately

Matchable DC41/42 Set up

Additional Function

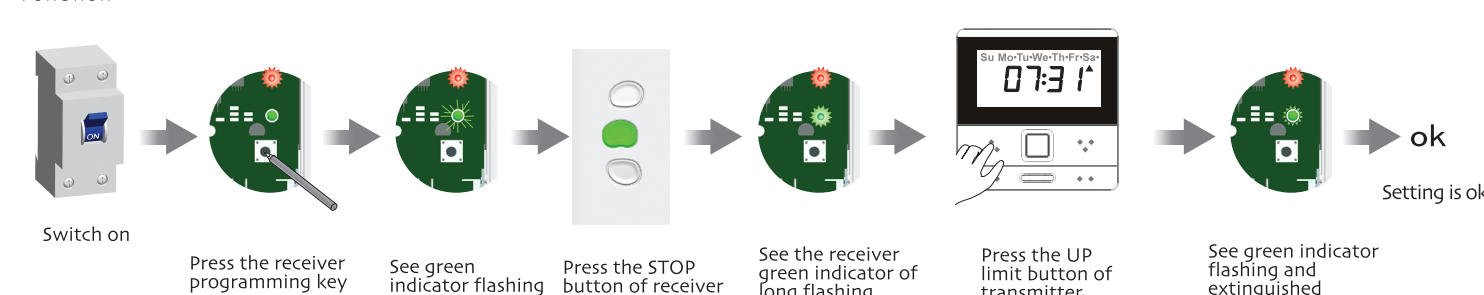


! The interval of different button must within 10 seconds of all setting, otherwise the system will restore the original state.

! One receiver store 20 emitters channels at most, and one channel of emitter can control 20 receivers at most.

Matchable DC43 Set up

Additional Function

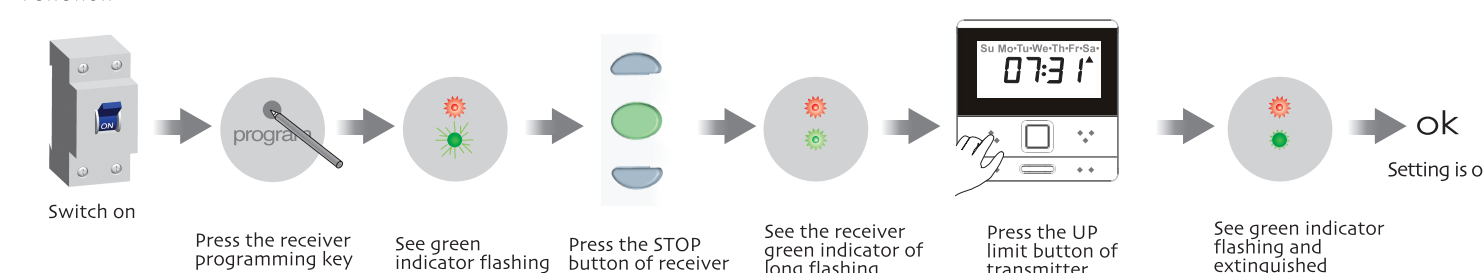


! The interval of different button must within 10 seconds of all setting, otherwise the system will restore the original state.

! One receiver store 20 emitters channels at most, and one channel of emitter can control 20 receivers at most.

Matchable DC 136 Set up

Additional Function

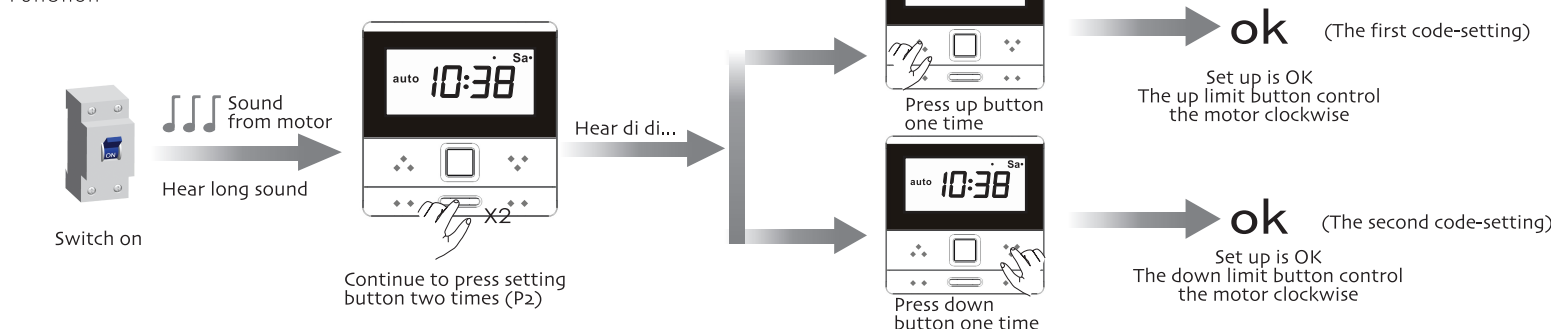


! The interval of different button must within 10 seconds of all setting, otherwise the system will restore the original state.

! One receiver store 20 emitters channels at most, and one channel of emitter can control 20 receivers at most.

Matchable R/E/ED Tubular Motor Set Up

Additional Function



! Delete all the datas of the motor and the new emitter has been programmed.

Matchable R/E/ED Tubular Motor Set up and add emitter

Additional Function

