



- Input voltage: 3V (CR2032×2)
- Emission Frequency: 433.92MHZ±100KHz
- Emission Power: 10 milliwatt
- Work temperature: -10℃~ 50℃
- Emission distance: open 200m, two walls 30m

- Emitter (UP) is UP
- Emitter (STOP) is STOP
- Emitter (DOWN) is DOWN

Portable Series: DC229(A) DC230(A)

DC229(A) is Single-channel emitter
DC230(A) is Double-channel emitter

- Notice: transmitter Do not exposed to moisture and strike, so as not to affect life.
When you use transmitter, if found emission distance obviously short or less sensitive, please change another same new battery. Please have batteries for recycling.



All controls support 433MHz & 868MHz
All controls support 3V & 12V/27A

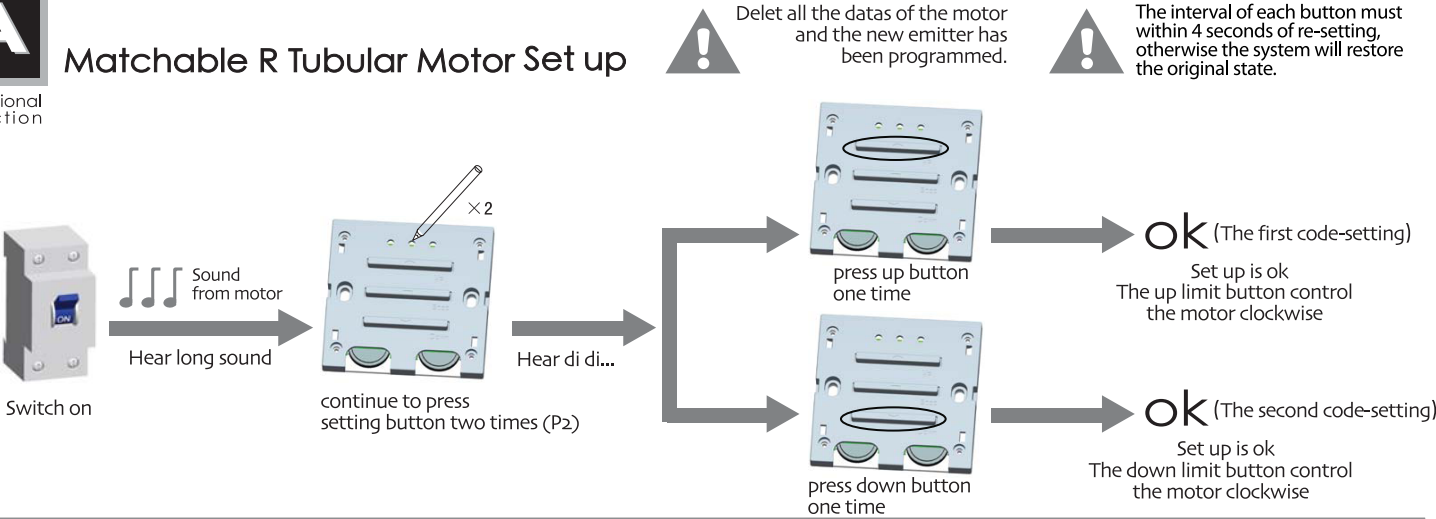
DC229(A) DC230(A) Control System Specification

Version No. : A/00



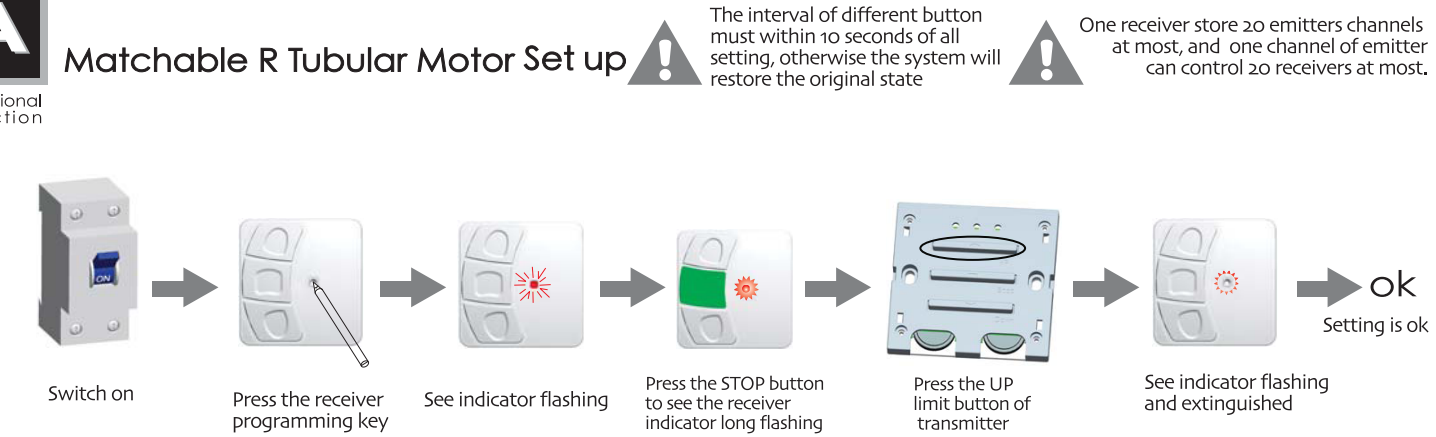
Matchable R Tubular Motor Set up

Additional Function



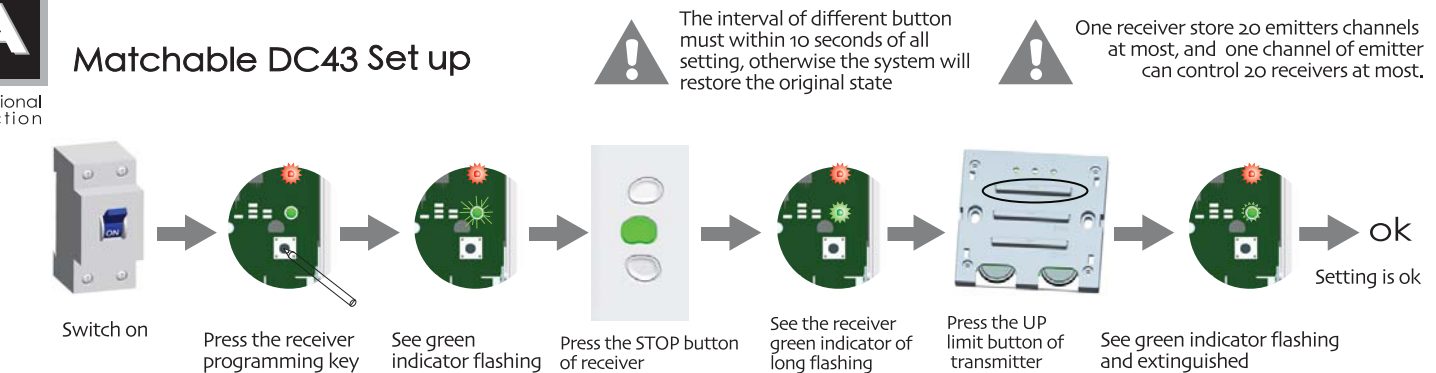
Matchable R Tubular Motor Set up

Additional Function



Matchable DC43 Set up

Additional Function



Type Specification

<p>up button</p> <p>stop button</p> <p>down button</p> <p>P2</p> <p>DC229(A)</p>	<p>DC229(A)</p>
<p>up button</p> <p>stop button</p> <p>down button</p> <p>P2A</p> <p>P2B</p> <p>DC230(A)</p>	<p>A Line</p> <p>B Line</p> <p>DC230(A)</p>