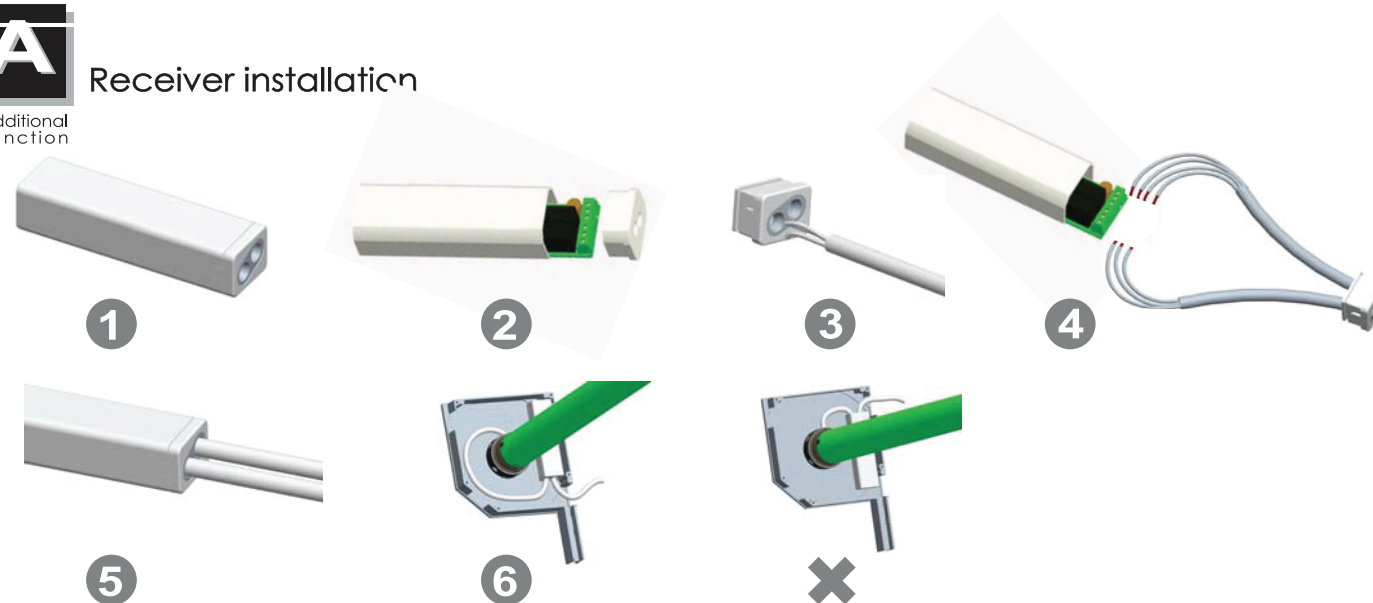




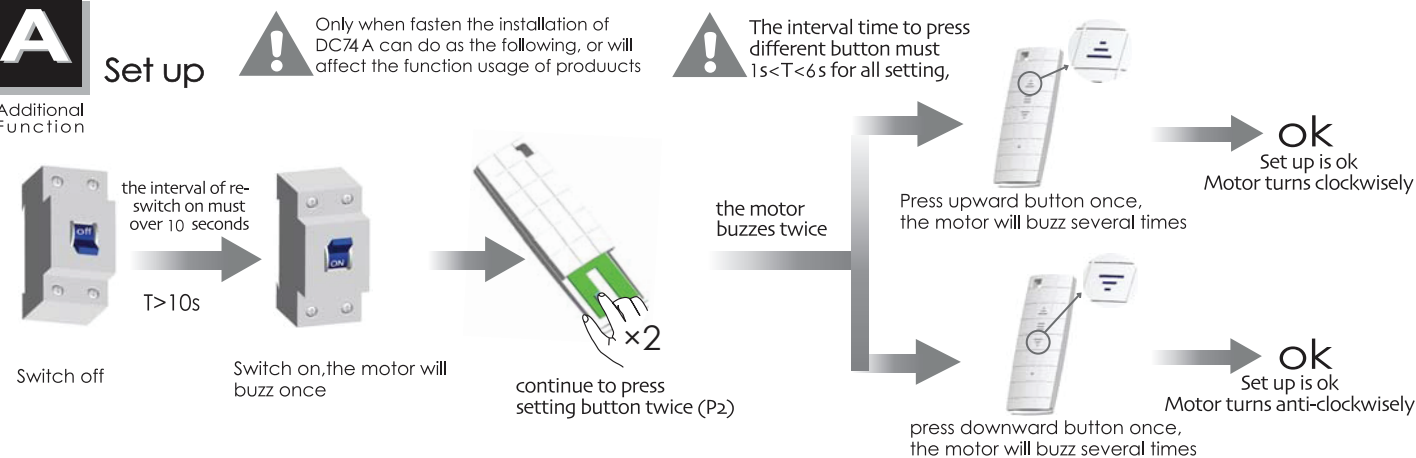
## Receiver installation

Additional Function



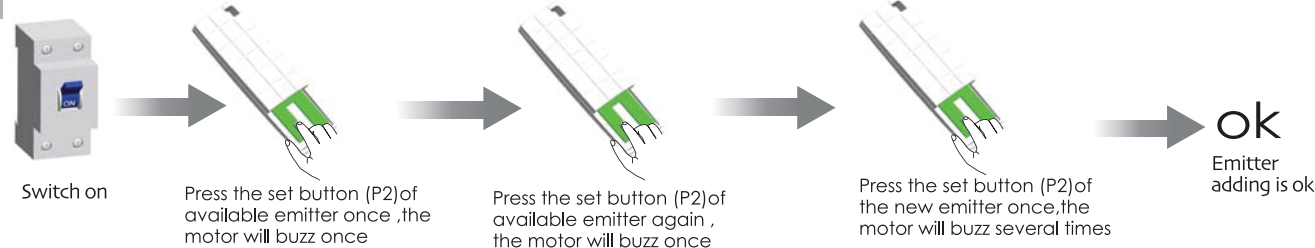
## Set up

Additional Function



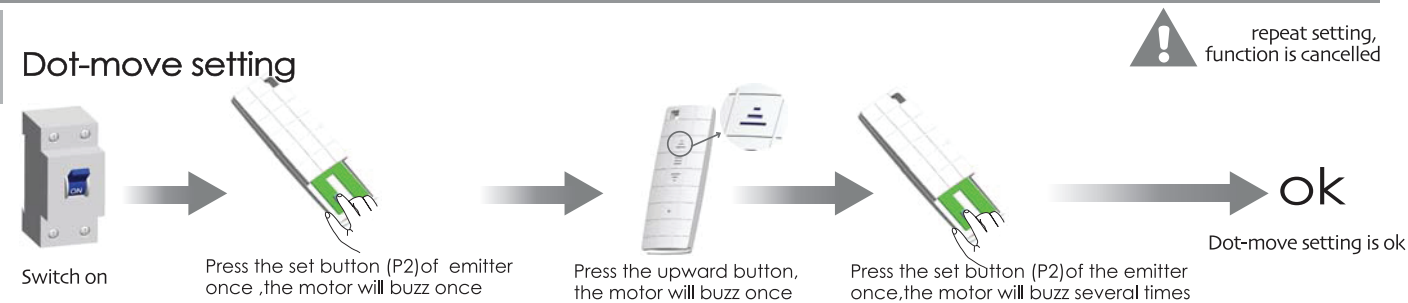
## Add Emitter

Additional Function



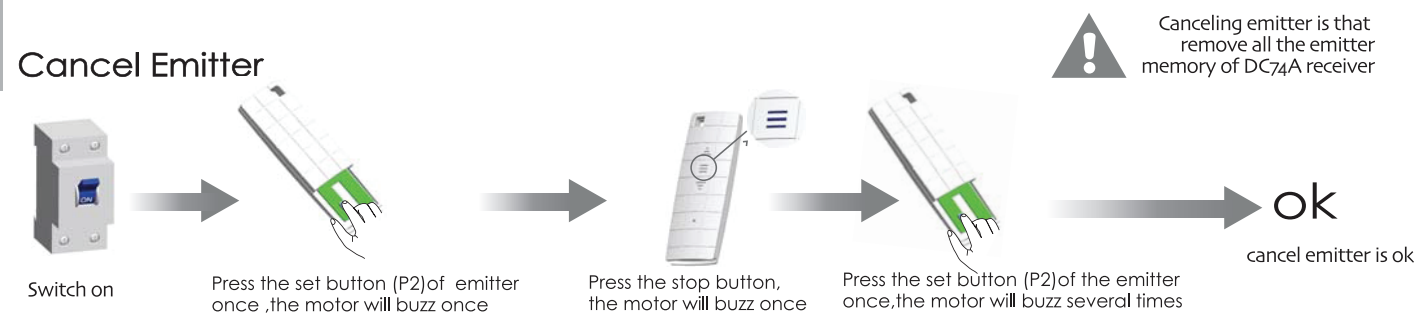
## Dot-move setting

Additional Function



## Cancel Emitter

Additional Function



All controls support 433MHz & 868MHz  
All controls support 230V/50Hz & 120V/60Hz

## DC74 A Control System Specification

Version NO. : A/00



## Technical Support

1.

5-channel emitter = single channel emitter x 5  
One channel of emitter can control 20 receivers at most at the same time.

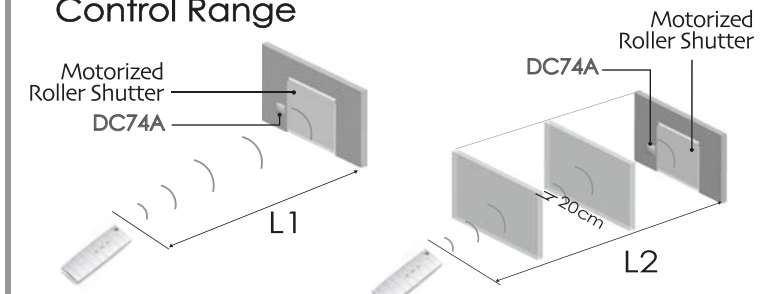
2.

DC74A Receiver  
One DC74A Receiver maximum can store 20 channels, over 20 channels, if still need add new channels, it will be repeating covered in turn from the second channel.



In the process of set up emitter and DC74A receiver, After the success of each set, tubular motor beep several times, then tubular motor move clockwise and counterclockwise one time as remind.  
Receiver in the mode of dot function, press up key and down key within 2 seconds, emitter control motor working in dot function; if continuous press more than 2 seconds motor will last working.  
Group control channel match code is unworkable.

## Control Range



	L1 Open	L2 Partition	Emission frequency
230V/50Hz	200m	35m	433.92MHz
120V/60Hz	200m	35m	



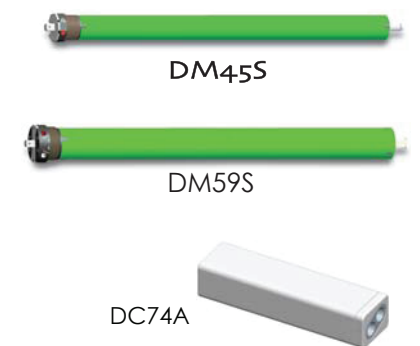
## Matchable emitter

Technical Support



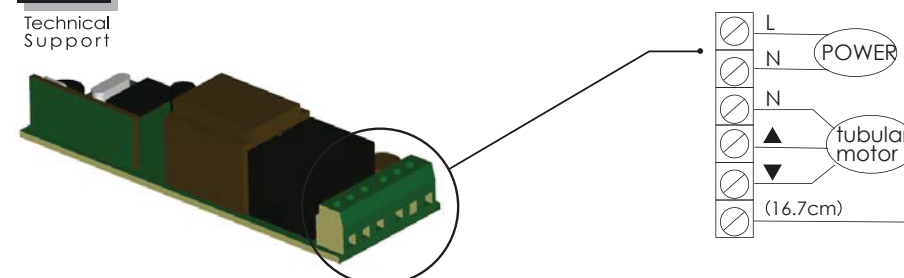
! PC14, DC48, DC49, DC44, DC61 press up and stop button at the same time that means P2 button.

## Matchable tubular motor



## Circuit installation

Technical Support



! 230V/50Hz or 120V/60Hz according to product nameplate



## The best installation distance



- 1 The shortest distance between receiver and ground  $\geq 1.5m$
- 2 The shortest distance between receiver and roof  $\geq 0.3m$
- 3 The shortest distance between receiver and receiver  $\geq 0.2m$

## Control System