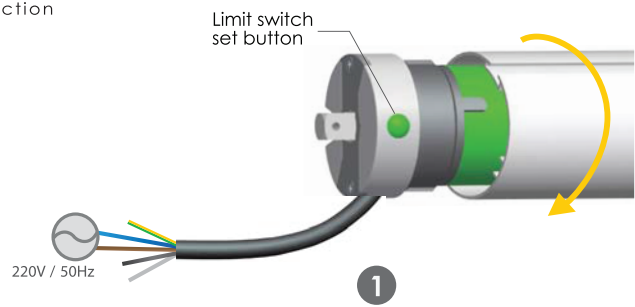
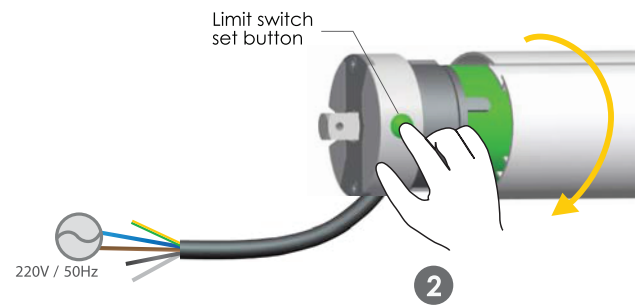




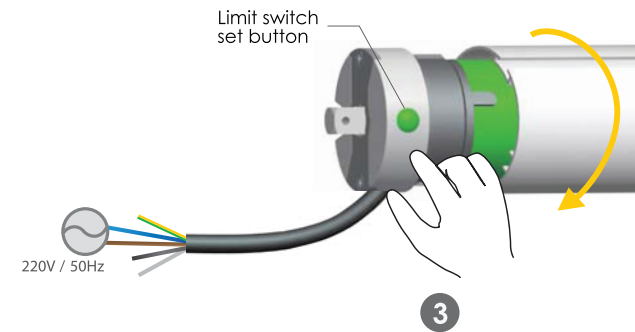
Clockwise rotation Limit switch setting



When the brown wire and blue wire connect with 220v/50hz, the drive adapter will rotate in a clockwise direction



When the drive adapter rotate in a clock-wise direction or stop (the brown wire and blue wire connect with 220v/50hz), press the setting button in the limit head, the motors will rotate in a clockwise direction

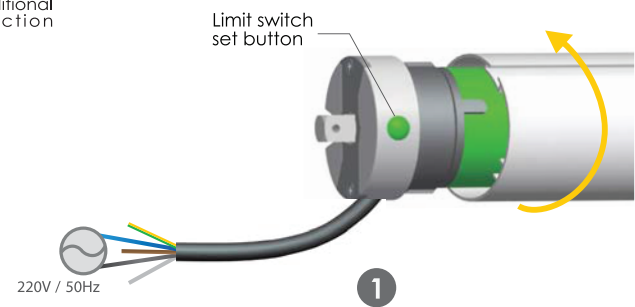


Release the setting button in the limit head namely confirm clockwise limit position

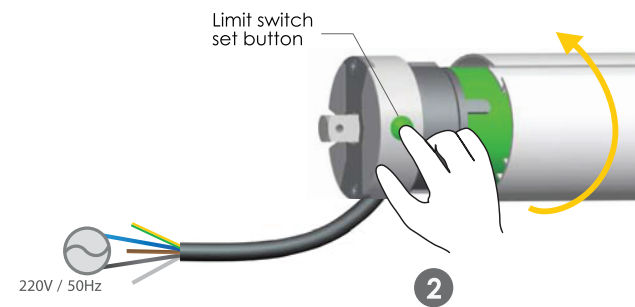
Repeat step 2 and step 3 namely can accurate setting clockwise limit position



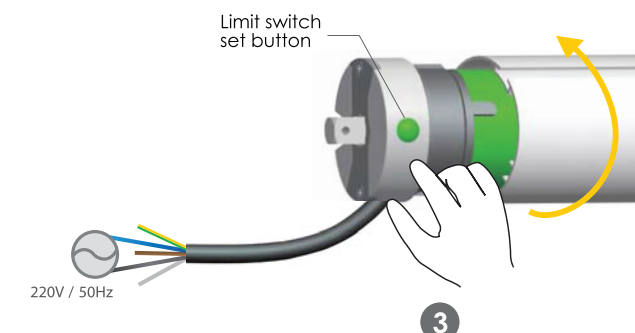
Counter-clockwise rotation Limit switch setting



When the black wire and blue wire connect with 220v/50hz, the drive adapter will rotate in a reverse direction



When the drive adapter rotate in a reverse direction or stop (the black wire and blue wire connect with 220v/50hz), press the setting button in the limit head, the motors will rotate in a reverse direction



Release the setting button in the limit head namely confirm reverse limit position

Repeat step 2 and step 3 namely can accurate setting reverse limit position



All controls support 230V/50Hz & 120V/60Hz

B: Button Electronic
Electronic Limit +
Resistance and stop function



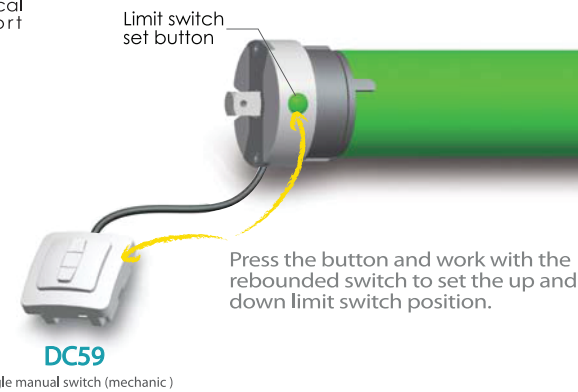
B-type motors Tubular Motor Specification

Version No. : A/00

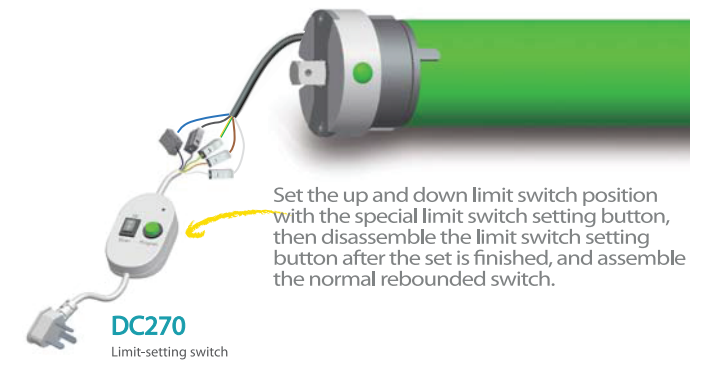


Setting limit switch method

Setting limit switch method 1

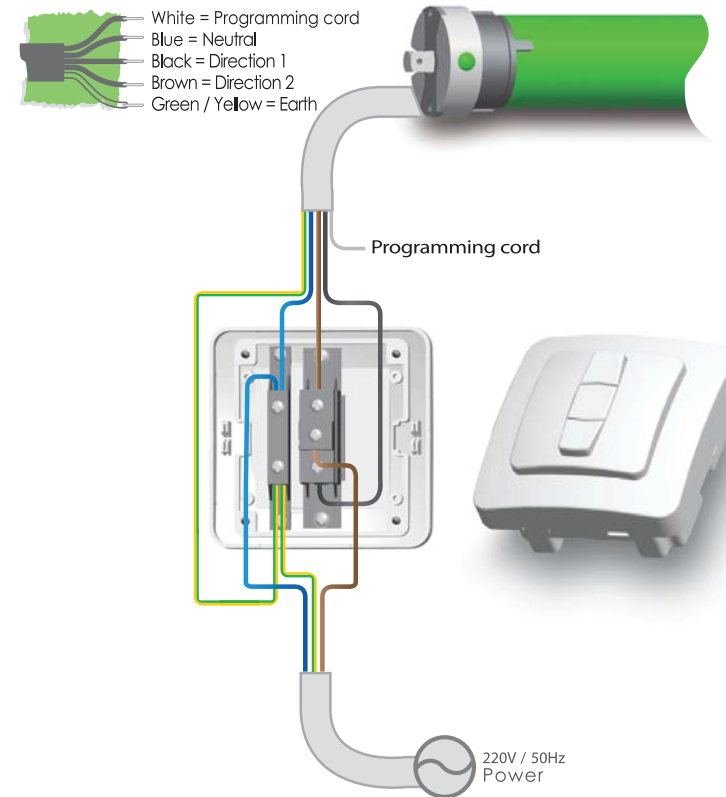


Setting limit switch method 2



Circuit installation

White = Programming cord
Blue = Neutral
Black = Direction 1
Brown = Direction 2
Green / Yellow = Earth



Attention

