

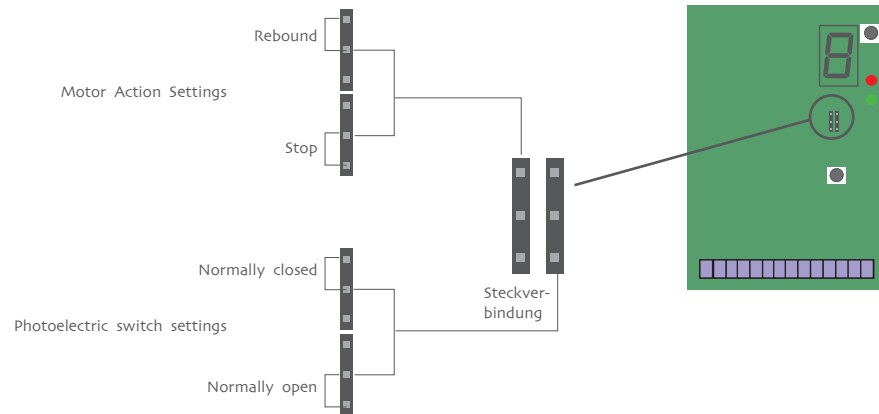
A

Additional function

The mode selecting setting



The selection of closed door rebound function, you can select to stop the motor or to rebound to the highest point when received the signal of photoelectric switch while the door is closing. the selection of photoelectric switch mode, you can select the NO(normally open) mode or the NC(normally closed) mode.



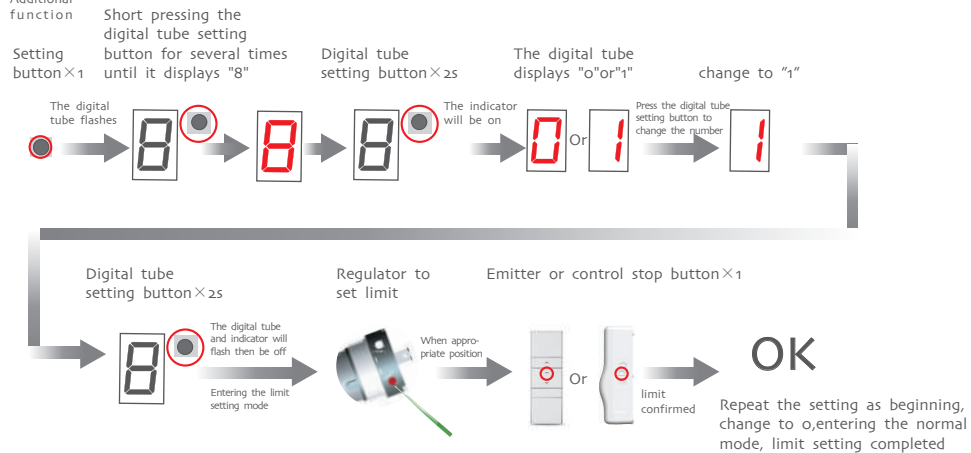
A

Additional function

Limit setting



Nixie tube displays 0, which means normal mode; 1 means setting mode; Being connected to electricity acquiesce in normal mode



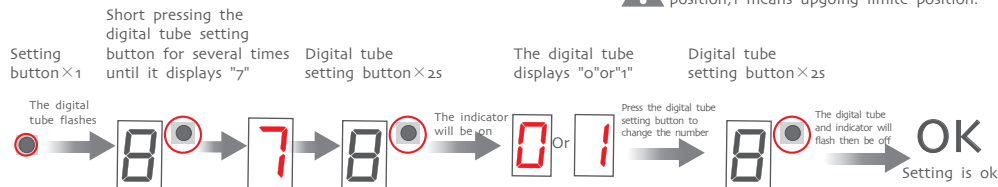
A

Additional function

Setting for automatic door closing position



Nixie tube displays 0, which means any position; 1 means upgoing limite position.



DC43N

Receiver Specification

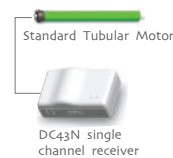
Version NO.: A/02

T
Technical support

Receiver specification

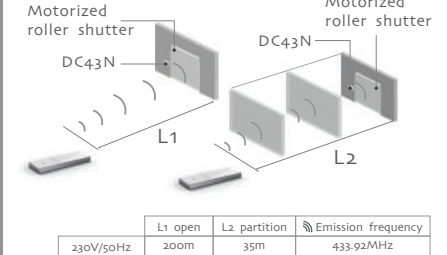


① Receiver in the mode of dot move function, press up button and down button within 2 seconds, emitter control motor working in dot move function; If continuous press more than 2 seconds motor will continuous working
② When in the group control mode, the setting is unworkable



- wireless receiver
- Electronic Light-touch, Dot-move
- Infrared resistance protection
- Maximum output power: 500W
- The standard type DC43N can store 20 valid channels, if connect new channels after storing 20 channels, only the last one will be covered circularly

Control range

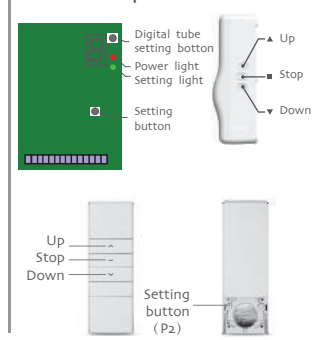


T
Technical support

Matchable emitter

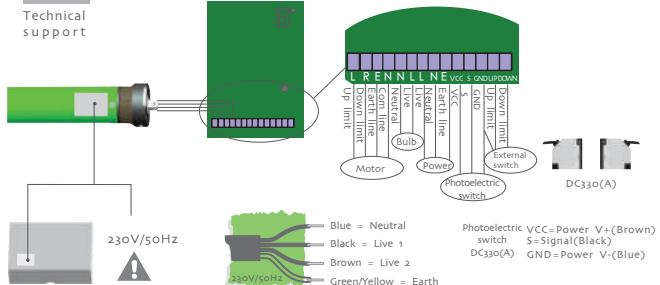


Button specification



T
Technical support

Mode of connection



The best installation distance

