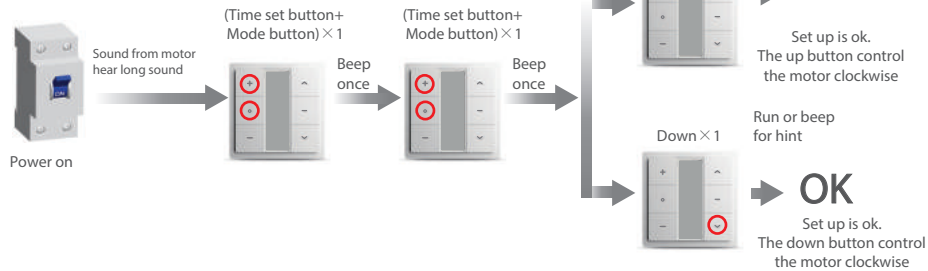


A

Additional  
function

## Matchable R tubular motor setting up

During the settings, the time between two operation must be shorter than 4s, otherwise it will quit the setting

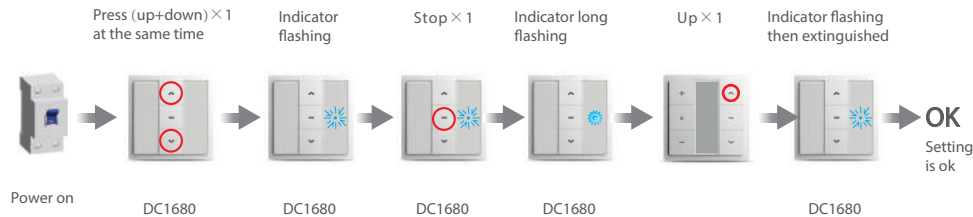


A

Additional  
function

## Matchable DC1680 setting up

During the settings, the time between two operation must be shorter than 6s, otherwise it will quit the setting

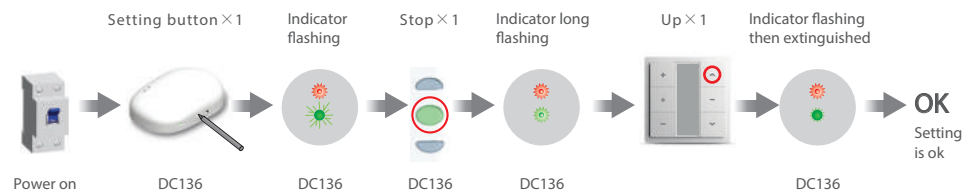


A

Additional  
function

## Matchable DC136 setting up

During the settings, the time between two operation must be shorter than 10s, otherwise it will quit the setting



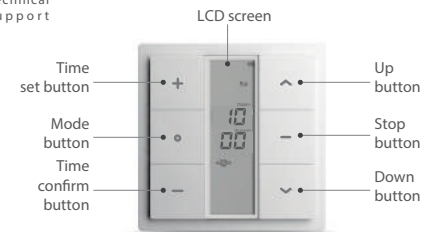
# DC1675 DC1676

## Emitter Specification

Version NO: A/00

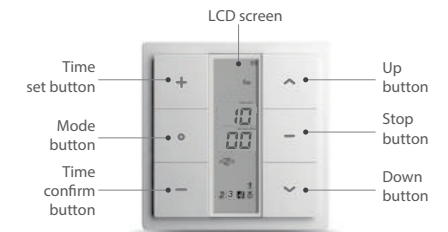
T  
Technical  
supportReceiver  
specification

Time set button + Mode button = Setting button



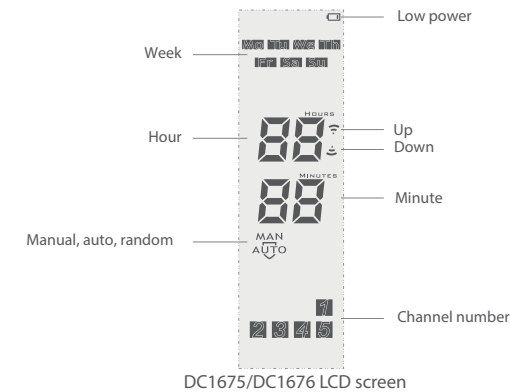
DC1675

Single - channel LCD time emitter



DC1676

5 - channel LCD time emitter



DC1675/DC1676 LCD screen

T

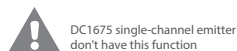
## Technical support

Technical specification	Fuction instruction
<ul style="list-style-type: none"> <li>• Input voltage : 3V(cr2430)</li> <li>• Transmitting frequency : 433MHz</li> <li>• Transmitting power : 10 milliwatt</li> <li>• Operating temperature : -10°C—50°C</li> <li>• Transmssion distance : 200 meters open office, 35 meters on two walls</li> </ul>	<p>Transmitter: you can choose single channel (DC1675), five channels (DC1676). One number of LCD screen means one control channel. Short press "Time confirm" button (number descending) or "Time set" button (number increasing) to change the channel. When the channel number is displayed in the LED, then the channel is select as the current channel. If all the channel is displayed, it enters the group control channel, all the channels are selected.</p> <p> Notice: transmitter do not exposed to moisture and strike, so as not to affect life. When you use transmitter, if found emission distance obviously short or less sensitive, please change another same new battery. Please have batteries for recycling.</p>

## T

Technical support

### Effective channel selection(Non group control)



Under the auto or random mode Press "Time set button" or "Time confirm button" to switch the desired channel

After switch the desired channel, Long press "Time confirm button" for about 3 seconds

OK

The channel flicks,the auto-timing and the random-timing is invalid,the channel does't flick, the auto-timing and random-timing is valid.It will shift repeatedly.

## A

Technical support

### Mode switch



Manual mode: normal transmitter,without timing function  
Auto mode: normal transmitter with timing function  
Random mode: normal transmitter with timing function, time period 15 minutes random emission



Press "Mode button" 2s, switch to manual mode

Press "Mode button" 2s, switch to auto mode

Press "Mode button" 2s, switch to random mode

Press "Mode button" repeatedly, mode will switch circularly

## A

Technical support

### The current time setting(only under manual mode;)



In the process of setting, every effective button-pressing takes 60 seconds, after 60 seconds, if no button is pressed, the setting mode will be quitted automatically.



Press "Mode button",switch to manual mode

Long press "Time set button" for 3 seconds, "hour" twinkles

Press "Up button" or "Down button", can adjust hour

Press "Time set button" until the "minute" twinkles

Press "Up button" or "Down button", can adjust minute



Press "Time set button" until the "week" twinkles

Press "Up button" or "Down button", can adjust week

Long press "Time confirmation button" 3s;"hour" and "minute" twinkles at the same time save the setting

Press "Time set button" 2s will be zero clearing and start to count time.

## A

Technical support

### The set-time check and setting(Non group control)



- ① If the set time is "——": "——", that means the upward (or downward) in this channel has no timing function.
- ② In the process of setting, every effective button-pressing takes 60 seconds, after 60 seconds, if no button is pressed, the setting mode will be quitted automatically
- ③ The time interval between motor going up and down must be over 32 mins. If less than 32 mins, it will show "Er01" to remind the operation wrong, and need re-set.
- ④ Under the status of Timer Setting, shortly press time setting button to adjust Minute/Hour
- ⑤ Under the status of Timer Setting, shortly press Mode button to adjust Timer for Up/Down.
- ⑥ During the viewing and setting status,you can press the stop button to have a quick exit;
- ⑦ After the timing set is finished,it will be memorized when black out.



Press "Mode button", switch to auto or random mode;

Long press the "time set button" for 3s to enter into the timing status, press the up or down button,you can check the set time of every day.

Press "Time set button", the hour twinkles,enter the up time setting state

Press "Up button" or "Down button",adjust the time (hour)



Press "Time set button", adjust the up time (minute),the minute twinks

Press "Up button" or "Down button", adjust the time (minute)

Press "Mode button", which confirms the set up time, and switches to down time setting,and the hour twinkles

Press "Up button" or "Down button", adjust the time (hour)



Press "Time set button", adjust the down time (minute),the minute twinks

Press "Up button" or "Down button", adjust the time (minute)

Press "Time confirmation button",which confirms the set down time, and switches to Mo up timing (hour), and the hour twinkles.

After set the up and down timing for the whole week in turn,press the "Time setting button" for 3s,the "Hour" and "min" on LCD will twinkle,then all the settings will be saved and it quit the set mode automatically.