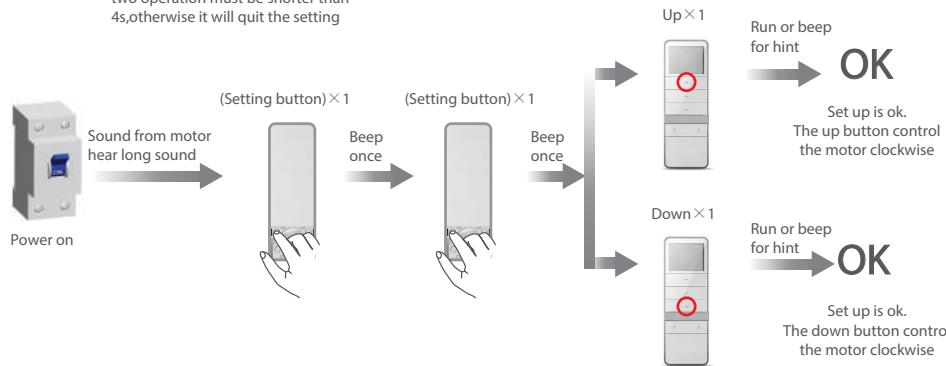


AAdditional
function**Matchable R tubular motor setting up**

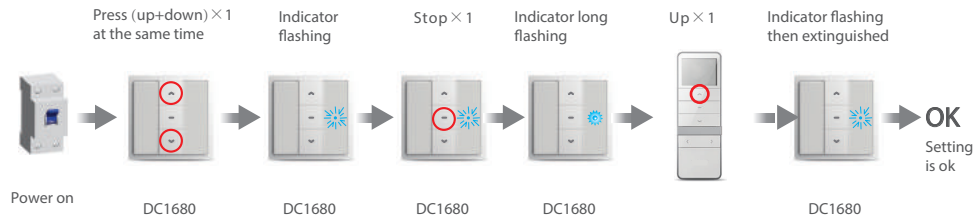
During the settings, the time between two operation must be shorter than 4s, otherwise it will quit the setting



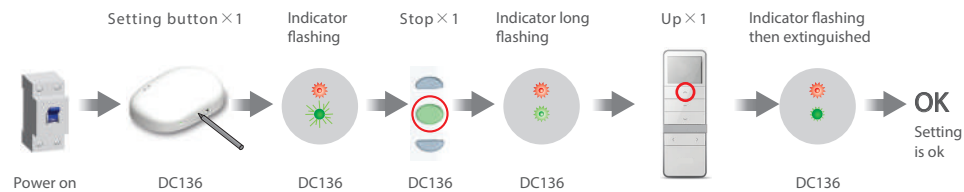
Delete all the datas of the motor and the new emitter has been programmed.

AAdditional
function**Matchable DC1680 setting up**

During the settings, the time between two operation must be shorter than 6s, otherwise it will quit the setting

**A**Additional
function**Matchable DC136 setting up**

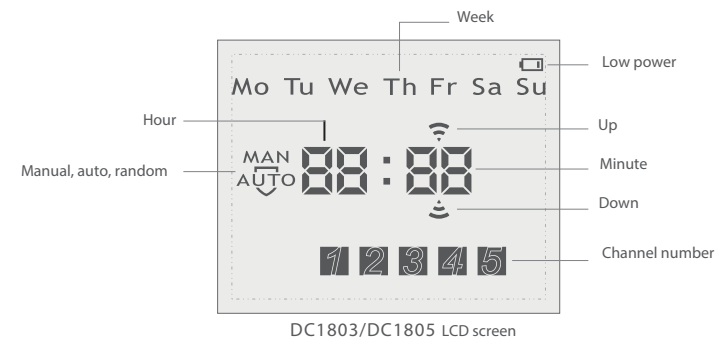
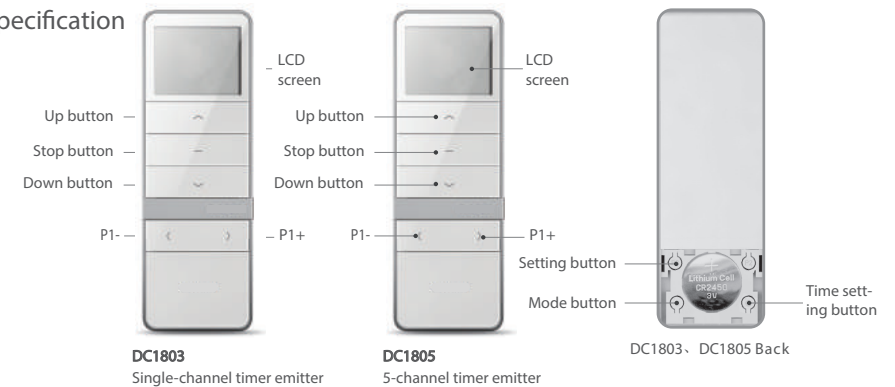
During the settings, the time between two operation must be shorter than 10s, otherwise it will quit the setting



DC1803 DC1805

Emitter Specification

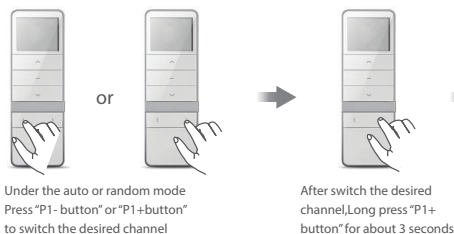
Version NO: A/00

T
Technical
support**Receiver specification****T****Technical support**

Technical specification	Function instruction
<ul style="list-style-type: none"> Input voltage : 3V(cr2450) Transmitting frequency : 433MHz Transmitting power : 10 milliwatt Operating temperature : -10°C—50°C Transmission distance : 200 meters open office, 35 meters on two walls 	<p>DC1803(single channel) and DC1805(5-channel) are both for optional. The No. indicated on the bottom of the LCD represents one channel. Press the "P1-" to shift to the lower channel, and the "P1+" is to shift to the higher channel. It will enter the group control mode after all the channel is indicated on the LCD. All the channels are valid in this mode.</p> <p>Notice: transmitter do not exposed to moisture and strike, so as not to affect life. When you use transmitter, if found emission distance obviously short or less sensitive, please change another same new battery. Please have batteries for recycling.</p>

T DC1805 Effective channel selection (Non group control)

Technical support



! DC1803 single-channel emitter don't have this function

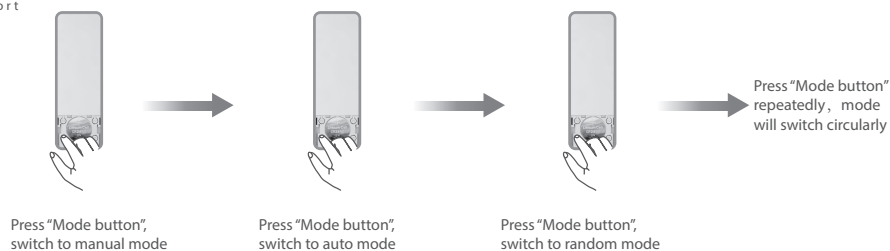
OK

The channel flicks, the auto-timing and the random-timing is invalid, the channel doesn't flick, the auto-timing and random-timing is valid. It will shift repeatedly.

A Mode switch

Technical support

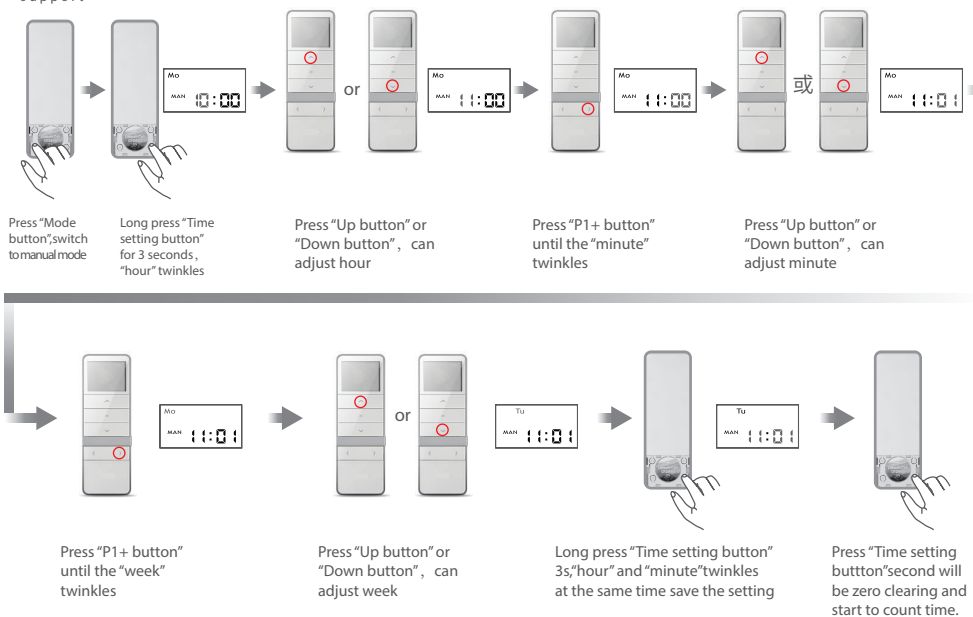
! Manual mode: normal transmitter, without timing function
Auto mode: normal transmitter with timing function
Random mode: normal transmitter with timing function, time period 15 minutes random emission



A The current time setting (only under manual mode;)

Technical support

! In the process of setting, every effective button-pressing takes 60 seconds, after 60 seconds, if no button is pressed, the setting mode will be quitted automatically.



A The set-time check and setting (Non group control)

Technical support

!

- ① If the set time is "—:—", that means the upward (or downward) in this channel has no timing function.
- ② In the process of setting, every effective button-pressing takes 60 seconds, after 60 seconds, if no button is pressed, the setting mode will be quitted automatically
- ③ The time interval between motor going up and down must be over 32 mins. If less than 32 mins, it will show "Er01" to remind the operation wrong, and need re-set.
- ④ Under the status of Timer Setting, shortly press P1-/P1+ button of channel to adjust Minute/Hour
- ⑤ Under the status of Timer Setting, shortly press Mode button to adjust Timer for Up/Down.
- ⑥ During the viewing and setting status, you can press the stop button to have a quick exit;
- ⑦ After the timing set is finished, it will be memorized when black out.

