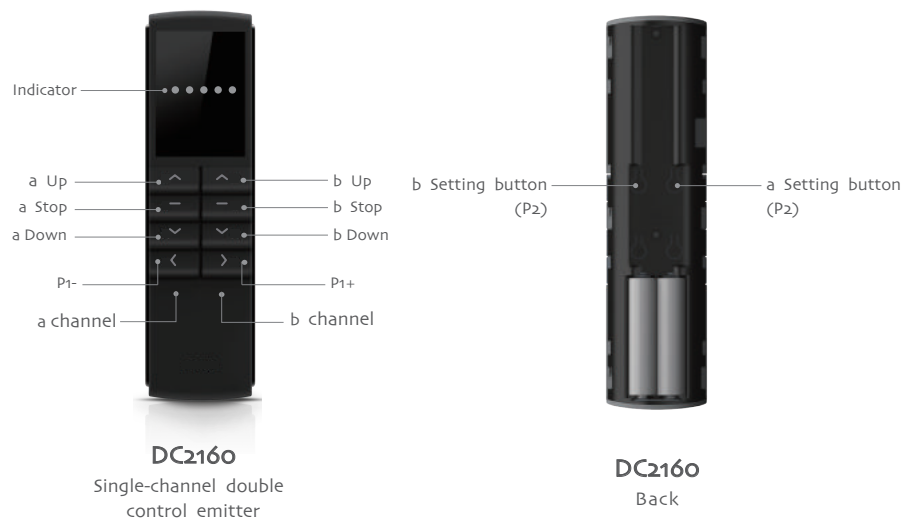



DC2160

Emitter Specification

T Type specification



T Technical support

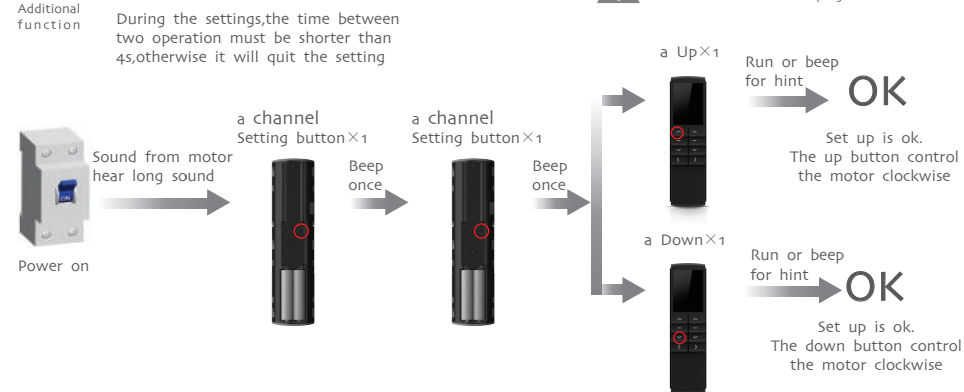
Technical specification	Fucntion instruction
<ul style="list-style-type: none"> Input voltage: 3V(2×1.5V) Transmitting frequency: 433MHz Transmitting power: 10 milliwatt Operating temperature: -10°C—50°C Transmssion distance: 200 meters open office, 35 meters on two walls 	<p>DC2160 is for optional.a channel and b channel can be chosen, A channel and b channel don't interfere each other. The operation of the B track and A track are the same.</p> <p> Notice: transmitter do not exposed to moisture and strike, so as not to affect life. When you use transmitter, if found emission distance obviously short or less sensitive, please change another same new battery. Please have batteries for recycling.</p>

A Matchable R tubular motor setting up

Additional function

Matchable R tubular motor setting up


 Delete all the datas of the motor and the new emitter has been programmed.



A Matchable DC168o setting up

Additional function

Matchable DC168o setting up


 During the settings,the time between two operation must be shorter than 6s,otherwise it will quit the setting



A Matchable DC136 setting up

Additional function

Matchable DC136 setting up

 During the settings,the time between two operation must be shorter than 10s,otherwise it will quit the setting

