



Technical Support

- Input voltage: 12V
- Emission Frequency:
433.92MHz ± 100KHz
- Emission Power: 10 milliwatt
- Work temperature:-10°C -50°C
- Emission distance:
open 200m, two walls 30m
- Components button (P2)(up button+
stop button) is setting button, it's valid
that press two button at the same time.
- Transmitter (▲) UP BUTTON
- Transmitter (■) STOP BUTTON
- Transmitter (▼) DOWN BUTTON

DC115A(F) DC14 DC61(S) DC141 DC279

DC115A(F) single channel transmitter
DC14 single channel transmitter
DC61(S) single channel transmitter
DC141 single channel transmitter
DC279 single channel transmitter

- Notice: transmitter Do not exposed to moisture and strike, so as not to affect life.
When you use transmitter, if found emission distance obviously short or less sensitive, please change
another same new battery. Please have batteries for recycling.



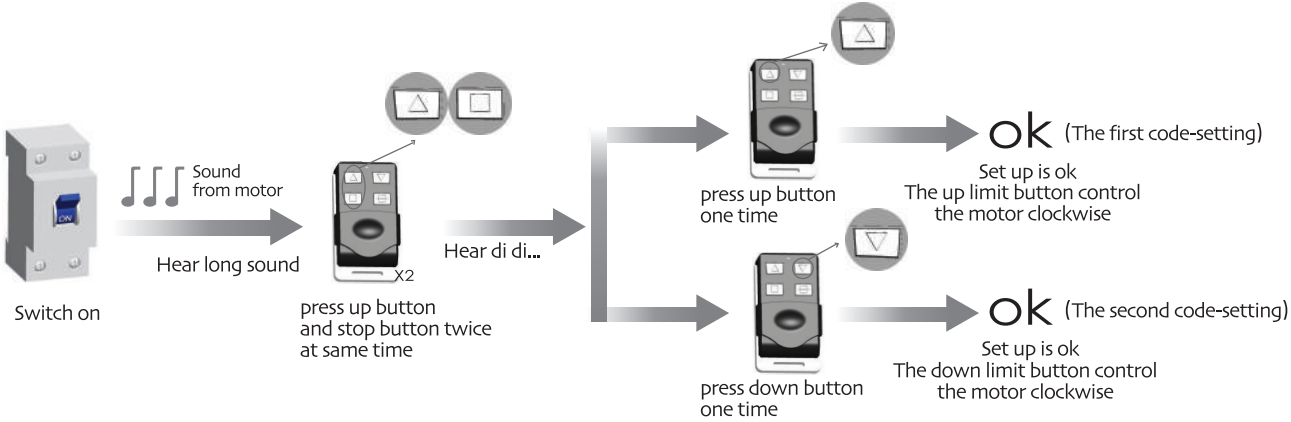
Matchable R Tubular Motor Set up



Delete all the datas of the motor
and the new emitter has
been programmed.



The interval of each button
must within 10 seconds of re-
setting, otherwise the system
will restore the original state.



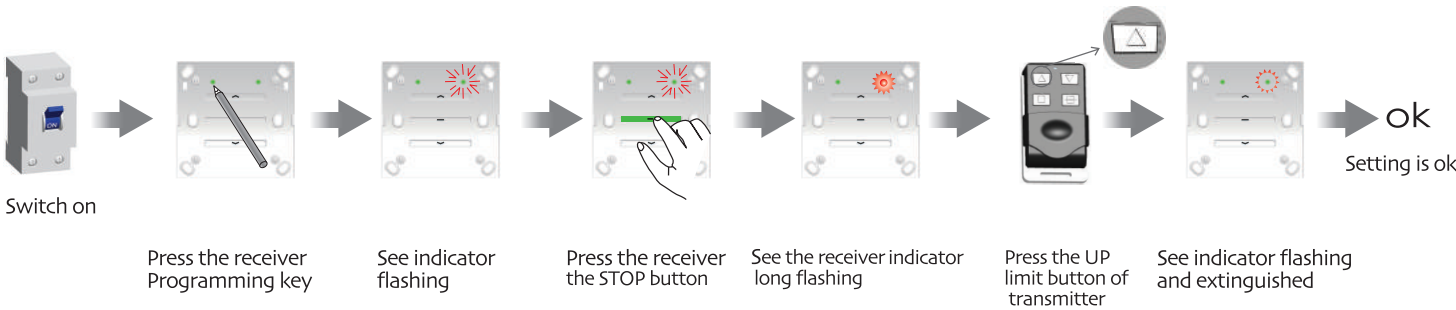
Matchable DC227/DC228 Set up



The interval of different button
must within 10 seconds for all
setting, otherwise the system
will restore the original state



One receiver store 20 emitters channels
at most, and one channel of emitter
can control 20 receivers at most.



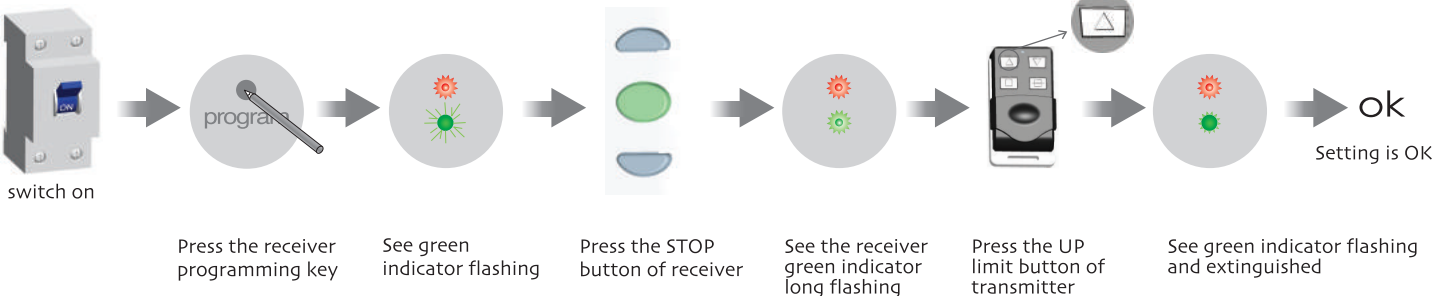
Matchable DC136 Set up



The interval of different button
must within 10 seconds for all
setting, otherwise the system
will restore the original state.



One receiver store 20 emitters channels
at most, and one channel of emitter
can control 20 receivers at most.



All controls support 433MHz & 868MHz
All controls support 12V/23A & 12V/27A
Specific parameters to the nameplate shall prevail



Control System

DC115A(F) DC14 DC61(S) DC141 DC279 Control System Specification

Version No. : B/04



Type Specification



The self-lock key of this series can
only be aplyed to the DC43 amd DC136.

 UP STOP DOWN LOCK DC115A(F)	 DC14	 DC61(S)
 DC141	 DC279	