



Matchable R Tubular Motor Set up



The light will extinguish 30s later and then enter into power saving mode



Delete all the datas of the motor and the new emitter has been programmed.



CE

All controls support 433MHz

Control System

DC539 Solar power sensor emitter Specification

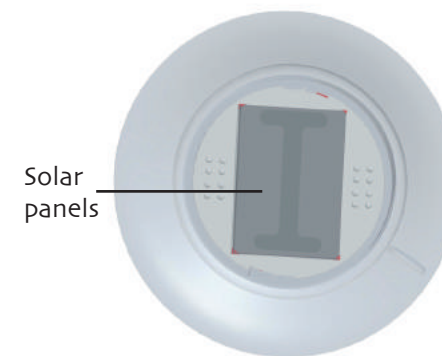


Version No : A/01

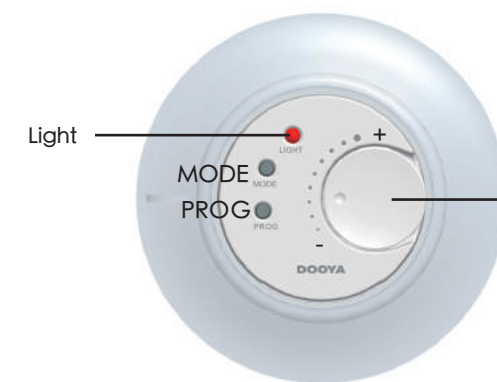


Type Specification

Mode is equal as the Up button of the emitter
PROG is equal as the Setting button of the emitter



Solar panels



Light

MODE
PROG

Power regulator
(Be used to adjust
the light class)

DC539

DC539back



Technical Support

- Emission Frequency: 433.92MHz \pm 100KHz
- Emission Power: 10 milliwatt
- Work temperature: 0°C~50°C
- working current: less than 12mA
- The light level of strength: 15klux~90klux
- Power: solar panel,Ffarad

- DC539 solar powered emitter,solar-powered,control the curtain move to the right position according to the set illumination intensity.
- Charged by solar energy
Control the motor to move according to the sunlight intensity. You can set sunlight sensitivity. When the motors stop working it will enter into saving power mode automatically
- Notice: transmitter Do not exposed to moisture and strike, so as not to affect life. When you use transmitter, if found emission distance obviously short or less sensitive, please change another same newbattery. Please have batteries for recycling.



Charging instruction

charge :charge with solar power,it takes 30 minutes to be full charged,the time will differ with different luminous intensity,can stand by for 8-10 hours,must be full charged before setting



press any key



the indicator lighten up
(Said electric)



Matchable DC227/DC228 Tubular Motor Set up



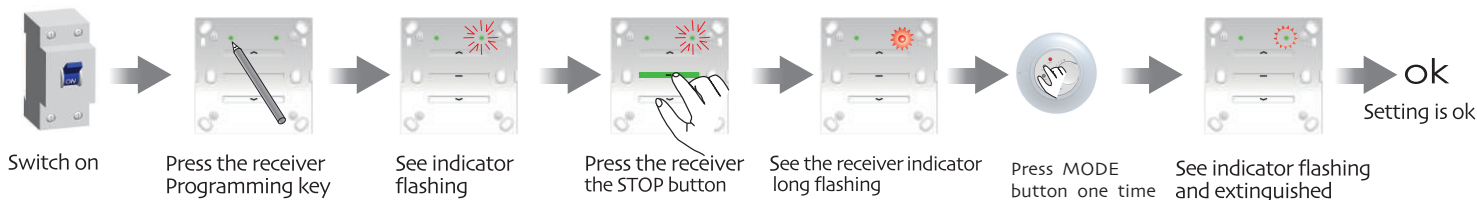
The interval of different button must within 10 seconds for all setting, otherwise the system will restore the original state



One receiver store 20 emitters channels at most, and one channel of emitter can control 20 receivers at most.



Press any button for 4s until the green light be normally on before programming. When power is low then the red light will be normally on.



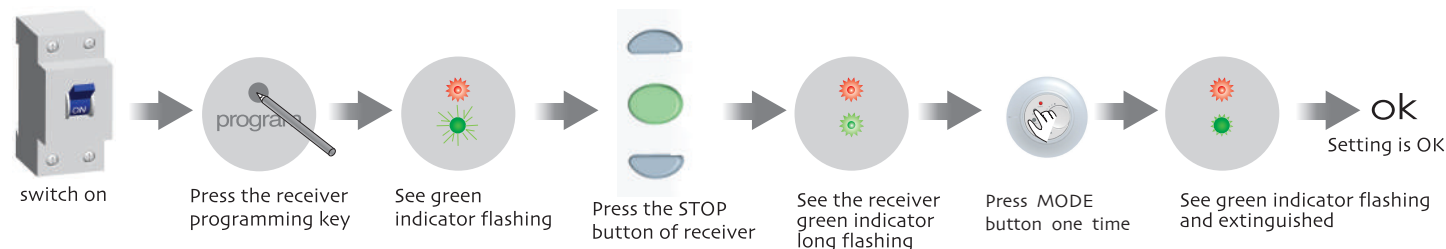
Matchable DC136 Tubular Motor Set up



The interval of different button must within 10 seconds for all setting, otherwise the system will restore the original state.



One receiver store 20 emitters channels at most, and one channel of emitter can control 20 receivers at most.



Illumination sensitive set up and Sensor function description



when turns dark,illumination becomes weaker, 18-25min later,Shutter moves upwards, curtain is opened, the sensor will detect the illumination



Adjust potentiometer to the right position (the higher the sensitive level is,the weaker the illumination is)

press the mode button until the indicator flash(at least 4s) Shutter moves uwards,then stops

Motor moves downwards under strong illumination the current illumination is recorded

30s later, enter the illumination detecting status

successful set up, once the illumination is above settings for 3-5min,the Shutter move downwardswhen the curtain covers sensor,the detected illumination doesn't reach the settings, Shutter moves upwards and stops above the sensor eventually)