



Add Emitter

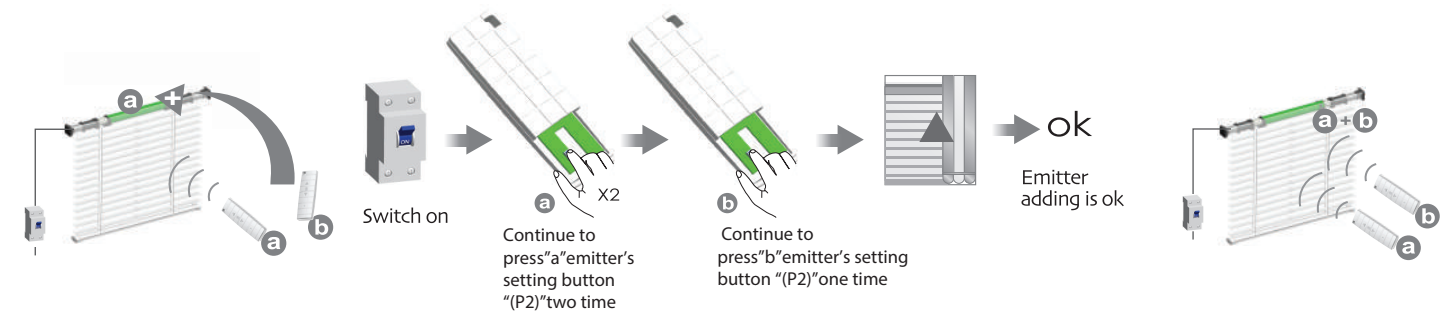
Additional  
Function



setting with hint of sound



The time period for POWER  
ON should be 5 seconds minimum

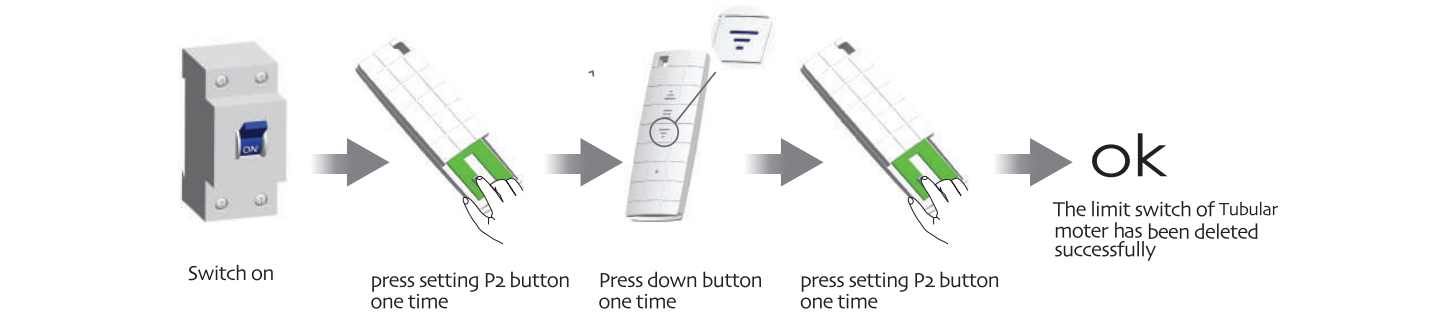


Cancel the limit

Additional  
Function



setting with hint of sound



Cancel Emitter

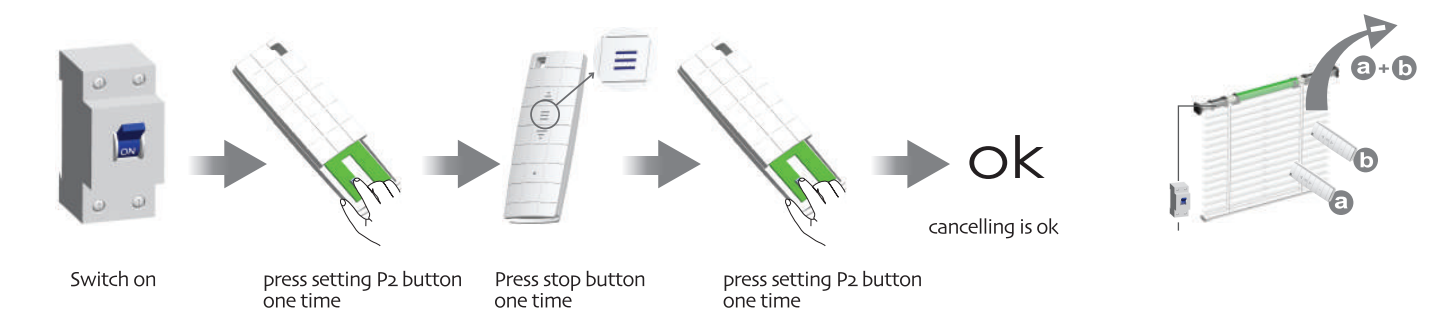
Additional  
Function



setting with hint of sound



To clean up the emitter means deleting  
all the memory of emitter and limit  
switch in the motor receivers



Common failures and solutions

Attention

	Fail-phenomena	Failure causes	solutions failure recovery
1	Switch on, the drive adapter runs in one-way operation	setting of limit switch in the motor is uncompleted	re-setting limit switch
2	motor starts slowly or not work after connect power	a. Power voltage is slow b. Wiring error c. Overload d. Improper installation	a. Adjust power to rated data b. Check circuit and correct wiring connecting c. Rated torque associated with the installation of the load d. Re-install the motor
3	Motor stops suddenly after running	check whether meet resistance force	check whether have redundant stuff in transmission structure
4	Abnormal sound during roller blinds in operation	Outer tube is too long, led the rolling shutter connects with both sides of bracket too tightly	If idler is active, propering make the tube shorter to avoid too tight status.



All controls support 433MHz & 868MHz  
All controls support 100V~240V



E:Electronic  
Electronic Limit + Built-in Receiver



Specification

Version No. : A/0 0



Technical Support

1.

5-channel emitter = single channel emitter  $\times 5$   
One channel of emitter can control 20 receivers at most at the same time.

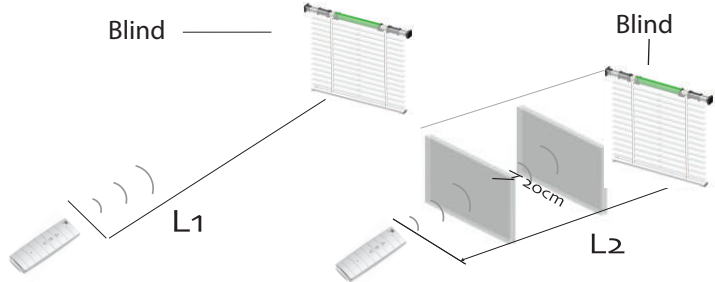
2.

DM25TE Tubular Motor  
One Electronic motor maximum can store 20 channels, over 20 channels, if still need add new channels, it will be repeating covered in turn from second channel.



Please set the limit position before use, as the setting method please see: 6 'set up/down limit position' as reference.  
Group control programme is noneffective; deleting programme, adding programme and setting limit switch is effective

Control Range



	L1 Open	L2 Partition	Emission frequency
230V/50Hz	200m	35m	433.92MHz
120V/60Hz	200m	35m	



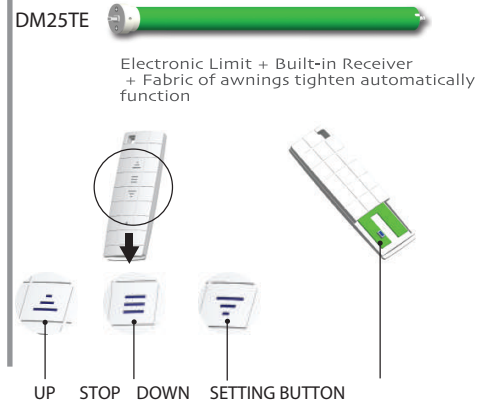
Matchable emitter and motors



5-channel emitter = single channel emitter  $\times 5$   
one channel of emitter can control 20 receivers at most



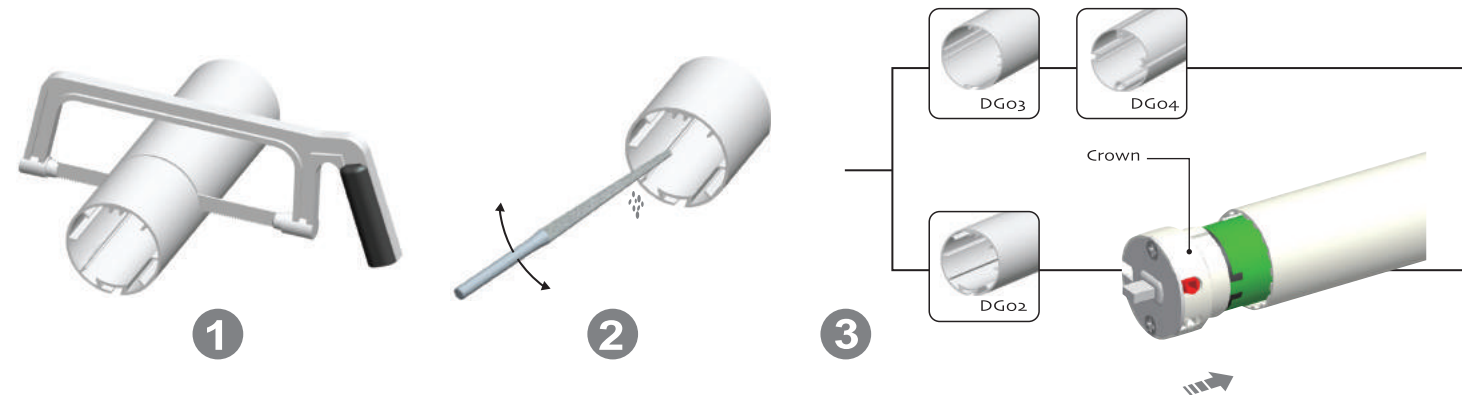
Button specification



Attention



# 1 Crown installation



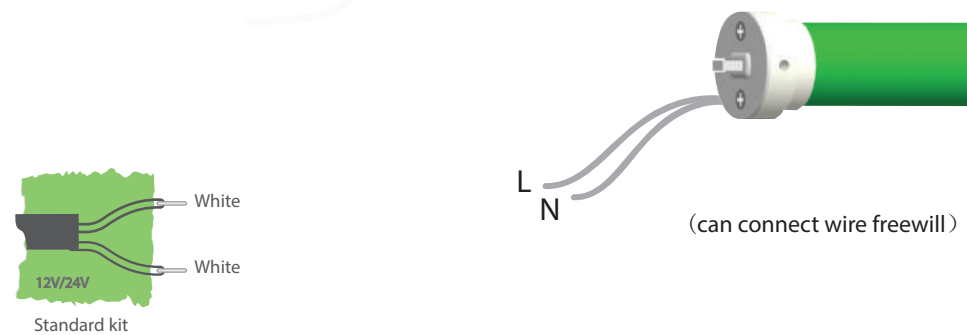
# 2 Drive adapter installation



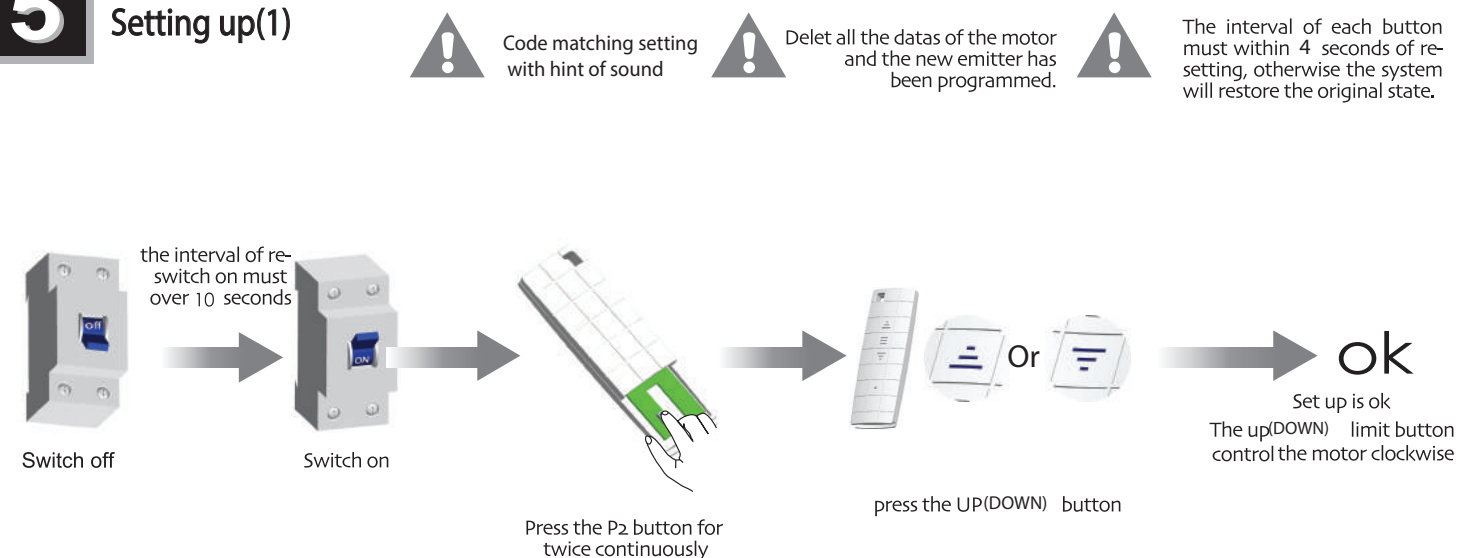
# 3 Bracket installation



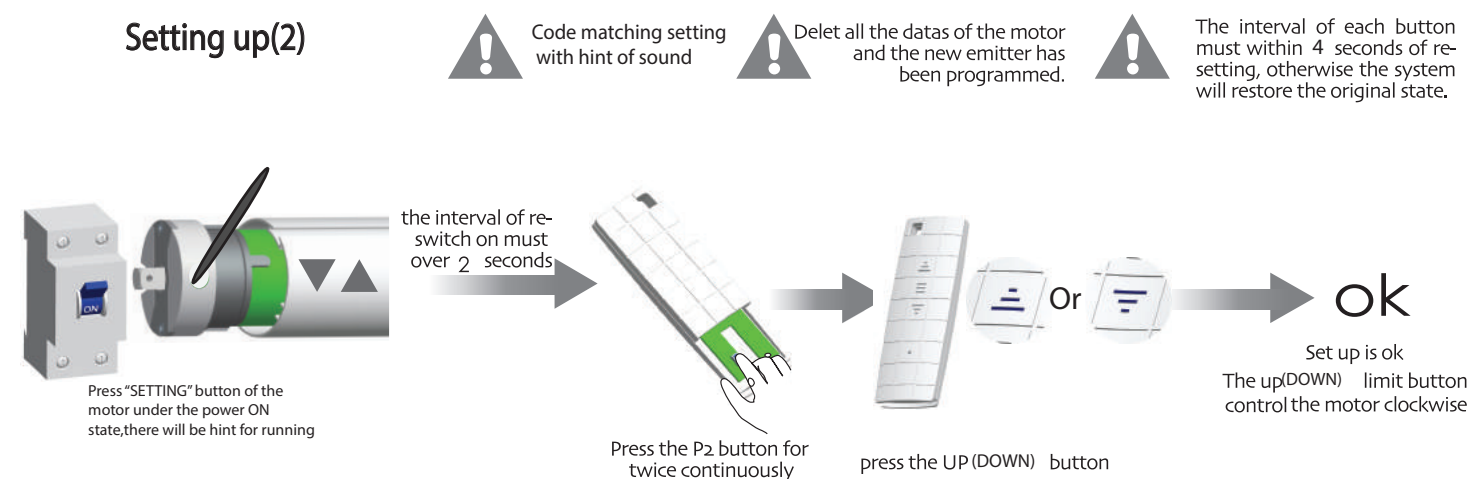
# 4 Circuit installation



# 5 Setting up(1)



# Setting up(2)



# 6 set up/down limit position

