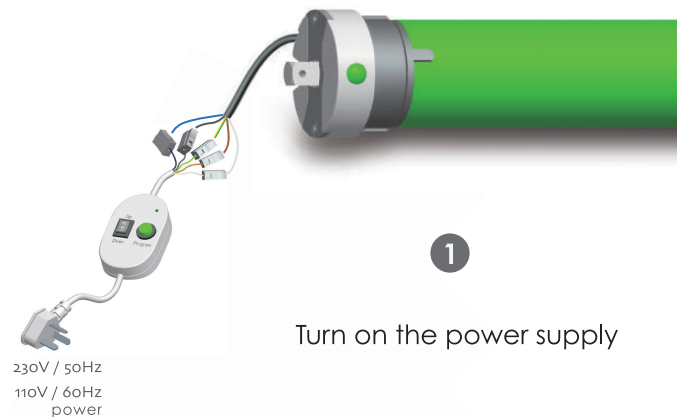


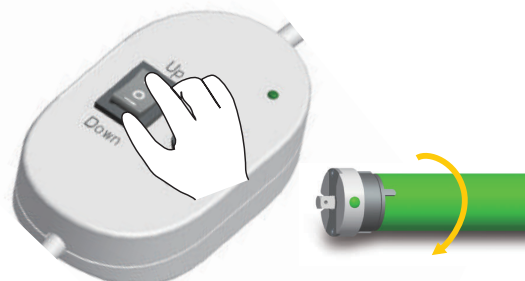


Additional  
Function

## Clockwise rotation Limit switch with setting



1 Turn on the power supply



2

Press the UP button in the DC270, the motors will rotate in a clockwise direction or stop



3

Press the Program button in the DC270, the motors will rotate in a clockwise direction, Release the Program button namely confirm clockwise limit position

Repeat step 3 namely can accurate setting clockwise limit position



All controls support 230V/50Hz & 120V/60Hz

**B: Button Electronic**  
Limit-setting switch



## DC270(A) Limit-setting switch Specification

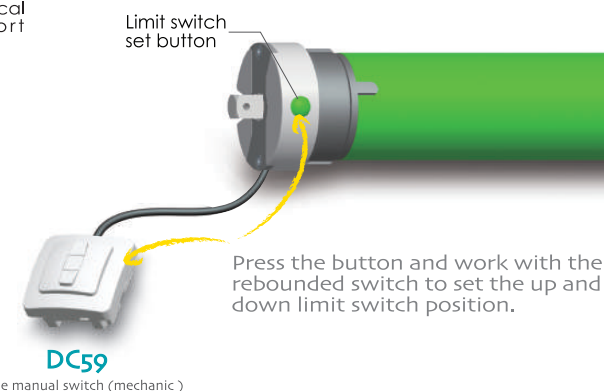
Version No. : A/00



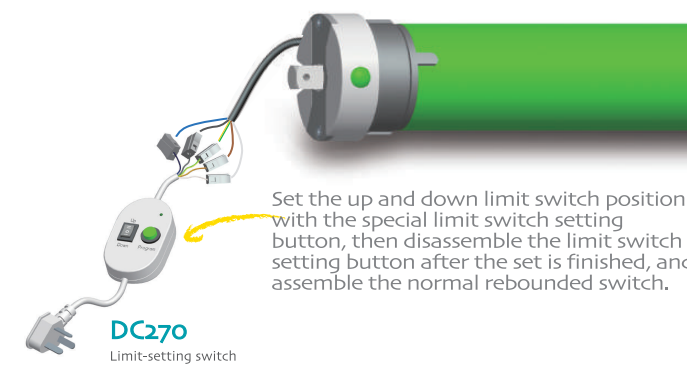
Technical  
Support

### Setting limit switch method

Setting limit switch method 1

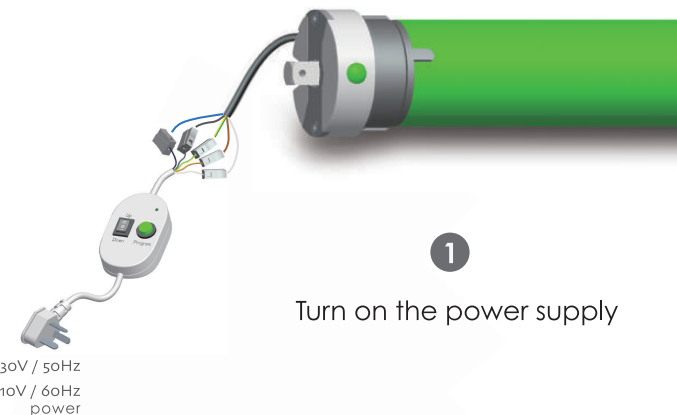


Setting limit switch method 2

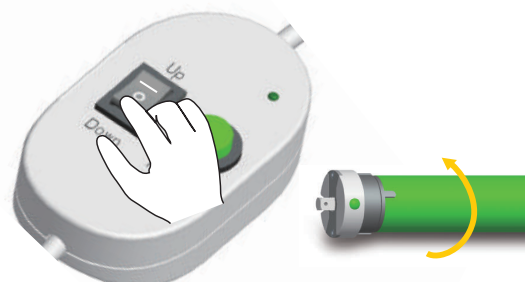


Additional  
Function

## Counter-clockwise rotation Limit switch with setting



1 Turn on the power supply



2

Press the DOWN button in the DC270, the motors will rotate in a Counter-clockwise direction or stop



3

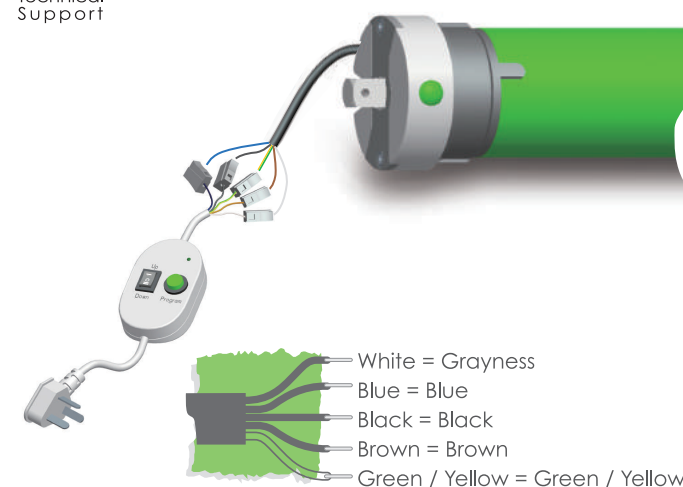
Press the Program button in the DC270, the motors will rotate in a Counter-clockwise direction, Release the Program button namely confirm Counter-clockwise limit position

Repeat step 3 namely can accurate setting reverse limit position



Technical  
Support

### Circuit installation



### Attention

