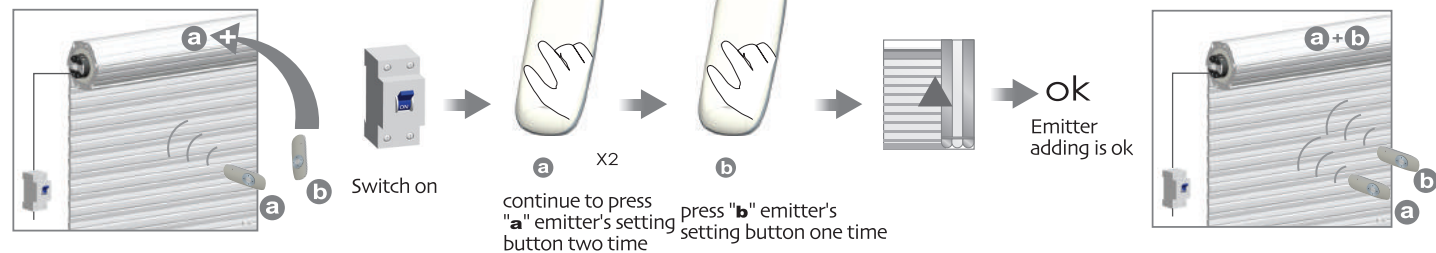




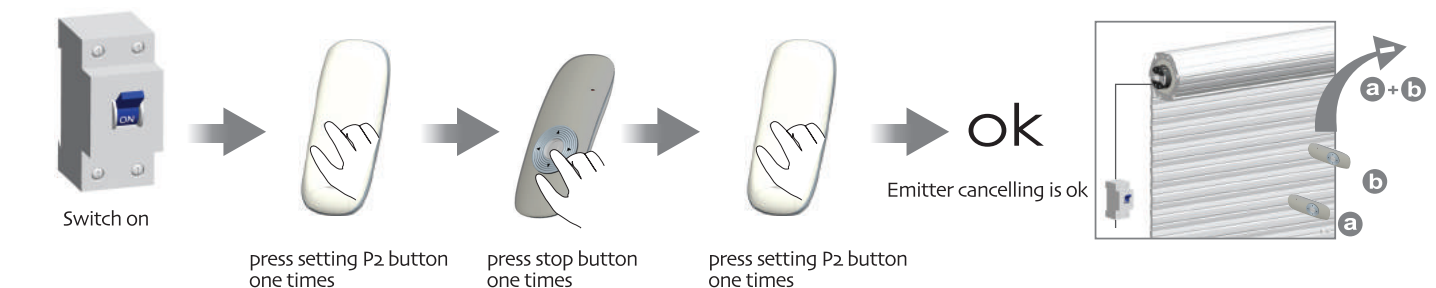
Add Emitter

Additional
Function



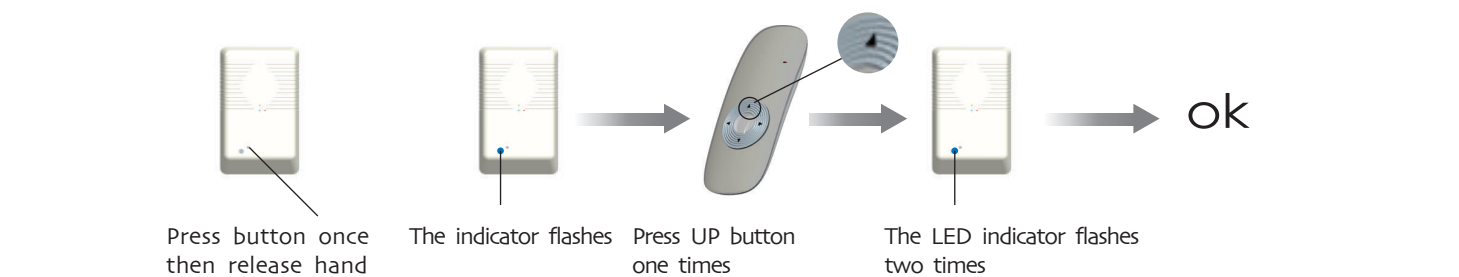
Cancel Emitter

Additional
Function



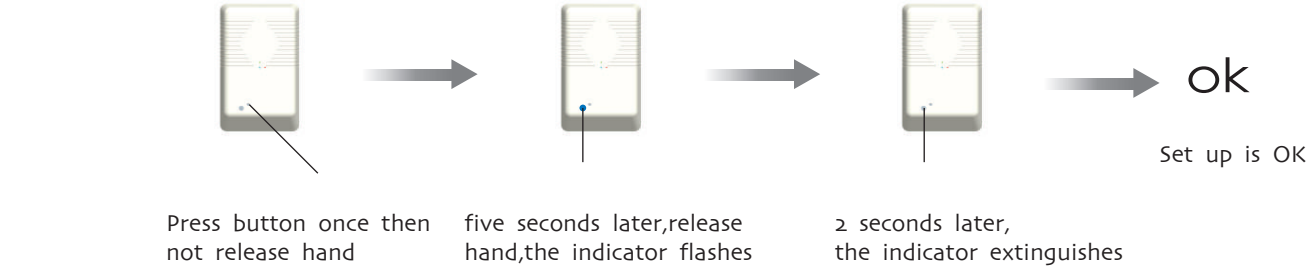
Setting up

Additional
Function



Emitter cancellation

Additional
Function



All controls support 433MHz & 868MHz
All controls support 230V/50Hz & 120V/60Hz
Transformer work voltage: 110V~250V/50Hz~60Hz

DC425 signal transformer

Specification



Version No: A/01

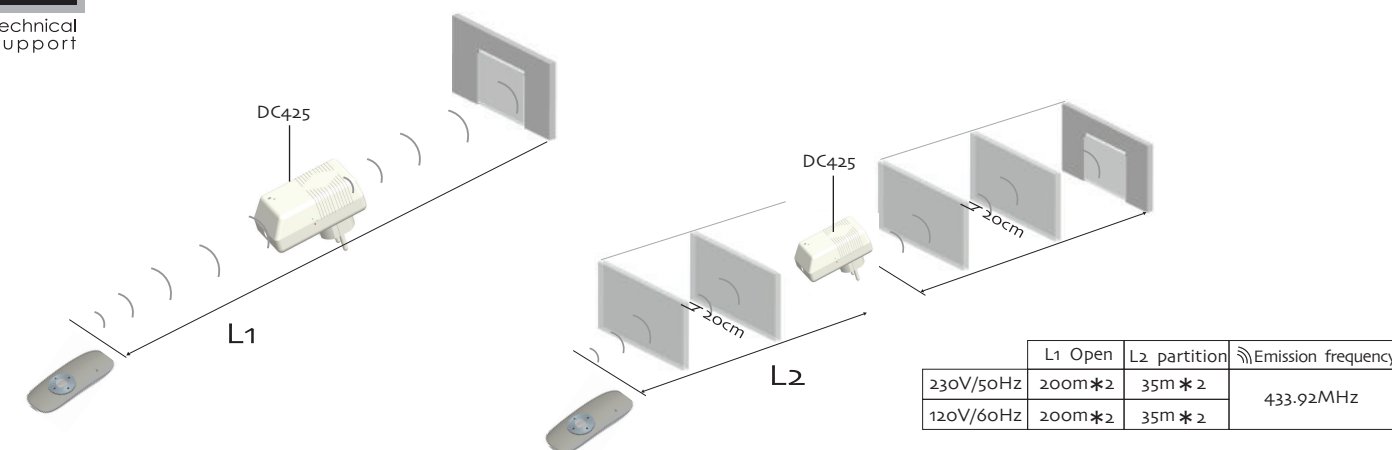


Technical
Support

Control Range



Can prolong emitting distance



Technical
Support

Matchable emitter



For the emitters without setting button like DC316, you can press Up button and Down button at the same time to work as the same function as setting button.



Button specification

