

433 MHz



In order to fully explore available functions of VETRO series please take a moment and read this manual before using the device.
VETRO transmitters are compatible with all YOODA brand devices.

1. General information



15-channel VETRO remote control with display and timer, white (VETRO_15RT)

1. Control:
can control single motor, or a group of up to 20 motors on each channel

2. Range:
200 meters outdoor,
35 meters indoor

3. Battery:
1 x CR2032

4. Power supply:
3 V

5. Dimensions:
136 x 46 x 15 mm

6. Transmitting power:
10 mW

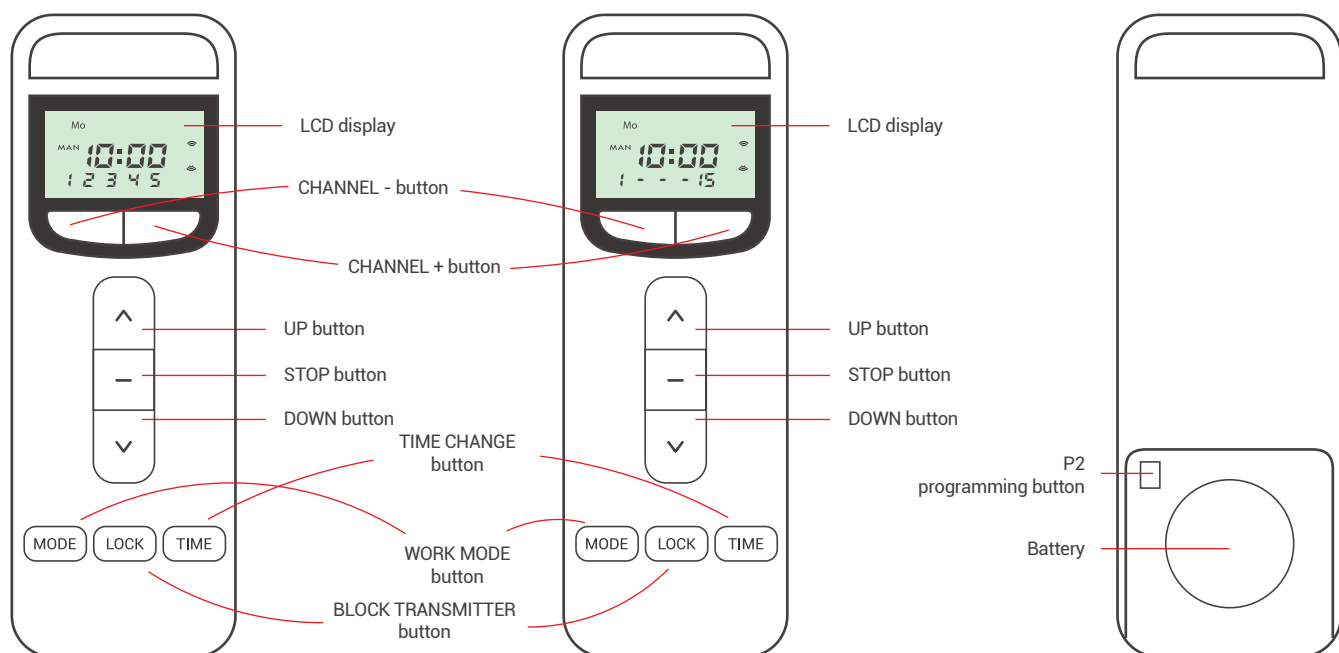
7. Operating temperature:
from 0°C to 50°C

8. Protection degree:
IP 30



Radio receiver range is a variable value and can differ from declared values depending on conditions in which device operates. Possible sources of changes in range are building construction, interference caused by other radio transmitters etc.

2. Detailed description



5-channel transmitter
with timer
(front)

15-channel transmitter
with timer
(front)

5 -channel or 15-channel transmitter
with timer
(back)



1. When all channel numbers (5RT remote control) or 1 --- 15 (15RT) are shown on the display, the group channel is on. It allows simultaneous control of all roller shutters that are programmed for individual blinds channels. No programming functions can be performed on group channel. The group channel is created automatically.
2. Estimated battery lifespan is 1 years if the device runs 4 commends a day in average.
3. The batteries should be replaced when the low battery symbol is displayed or the receiving device stops reacting to commands
4. When replacing the battery, pay attention to the correct polarity.



Batteries contain substances that may be hazardous to health and may pollute the environment. Used batteries should be disposed of properly.

3. Blocking of transmitter



Press and hold LOCK button for 3 seconds.



LOC will appear on the display.



To unblock the transmitter press and hold the LOCK button for 3 seconds.



The transmitter has been unlocked

4. Changing work mode



1. Manual working mode: normal working mode, without timer function
2. Automatic working mode: normal working mode with timer function
3. Random working mode time controlled work with random opening/closing time (up to 15 minutes difference to preset opening/closing time).
4. Holding down the MODE button for longer than 3 seconds causes the transmitter's working modes to change continuously.



Press and hold MODE button for 3 seconds to set the automatic work mode.



Press and hold MODE button for 3 seconds to set the random work mode.



Press and hold MODE button for 3 seconds to set the manual work mode.



Every working mode change results in switching between the modes.

5. Setting current time



1. Time can be set only when device is in manual working mode.
2. Longer than 60 seconds pause between series of button clicks during programming will cause device to switch off from programming mode without saving any changes.
3. To exit the time change mode without saving changes, press the STOP button.



Press and hold MODE button to set the manual work mode.



Press and hold TIME button for about 3 seconds. Current time flashes on the screen.



Use the UP or DOWN buttons to set the current hour.

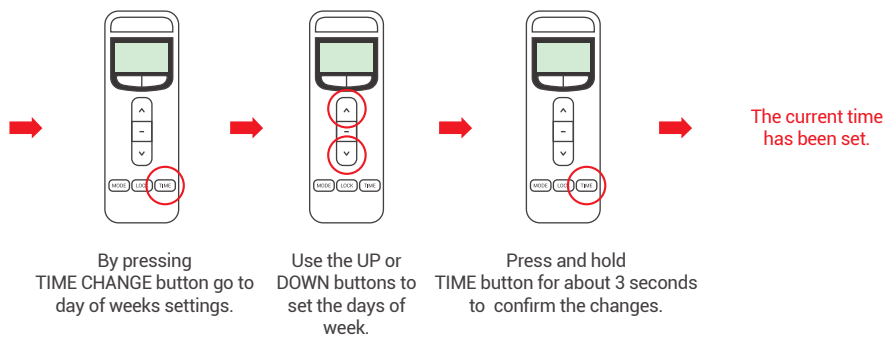


By pressing TIME button go to minutes setting.



Use the UP or DOWN buttons to set the minutes.

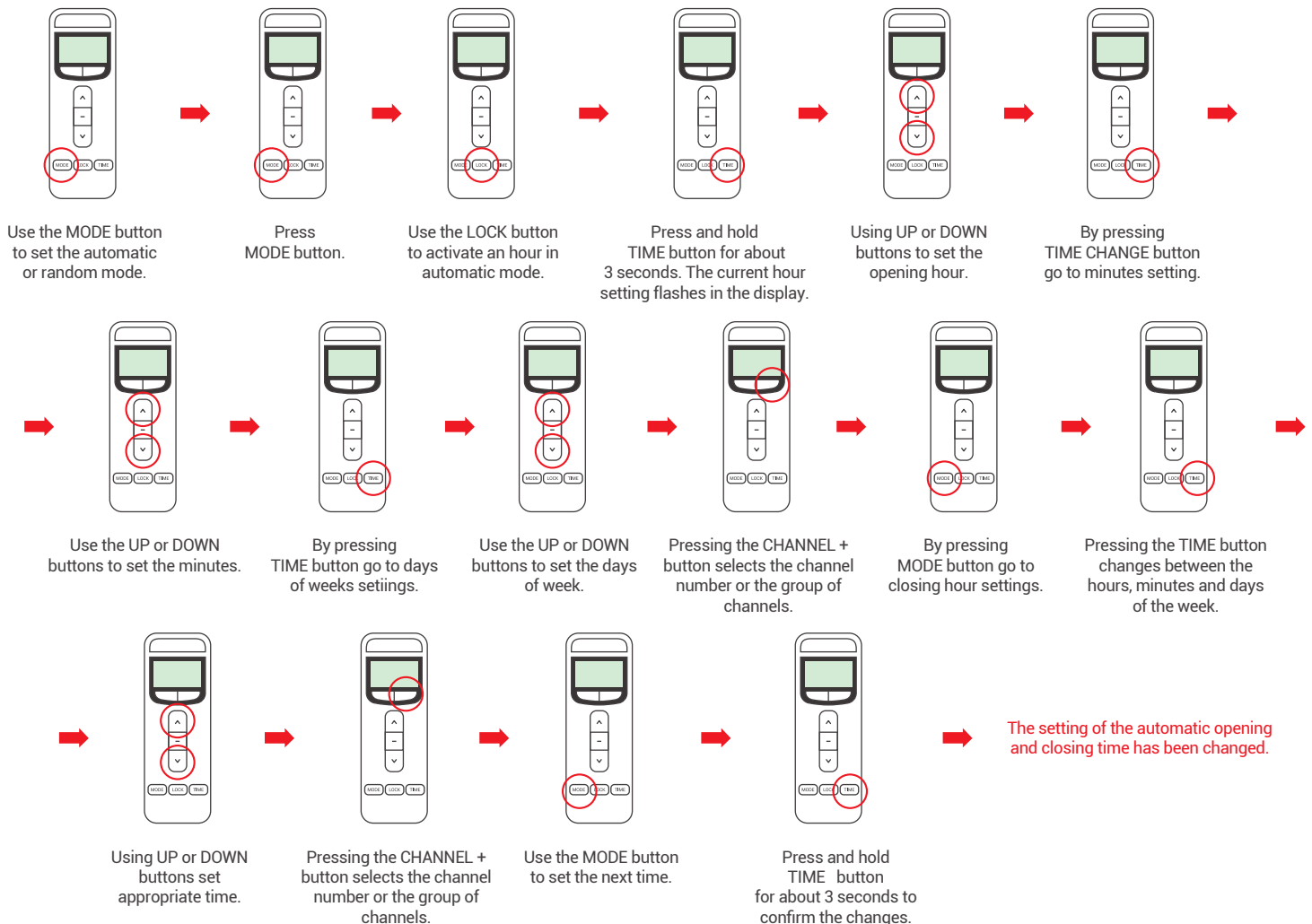




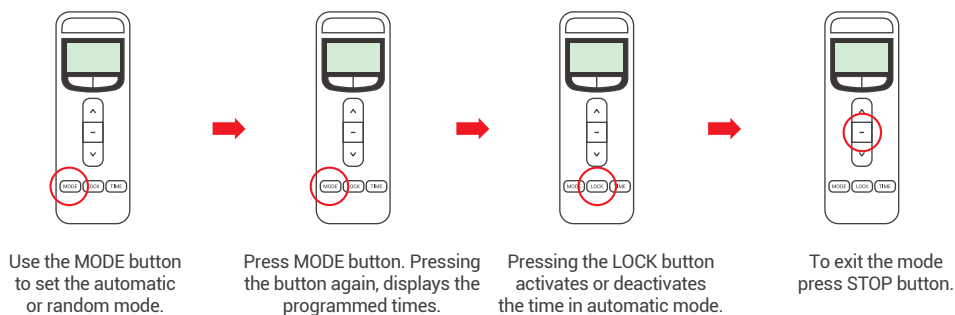
6. Change of the automatic opening and closing time settings



1. The difference between opening and closing time can not be less than 32 minutes. Otherwise, an error message will appear on the display.
2. Changes in opening and closing time are made in automatic or random mode.
3. Longer than 60 seconds pause between successive presses of the button will automatically exit the change mode.
4. The transmitter has the option of programming 9 opening times and 9 closing times.
5. Each programmed time automatic opening or closing time can work:
 - A) one day of the week
 - B) from Monday to Friday
 - C) from Monday to Saturday
 - D) from Monday to Sunday
6. Each programmed time automatic opening or closing time can handle one channel or group of channels. In the case of a 5RT transmitter this is one group (channels 1 to 5), and 15RT are four groups:
 - A) channels from 1 to 5
 - B) channels from 6 to 10
 - C) channels from 11 to 15
 - D) channels from 1 to 15
7. The symbol "- -" means that the time is not active in automatic mode.
8. To exit the time change mode without saving changes, press the STOP button.



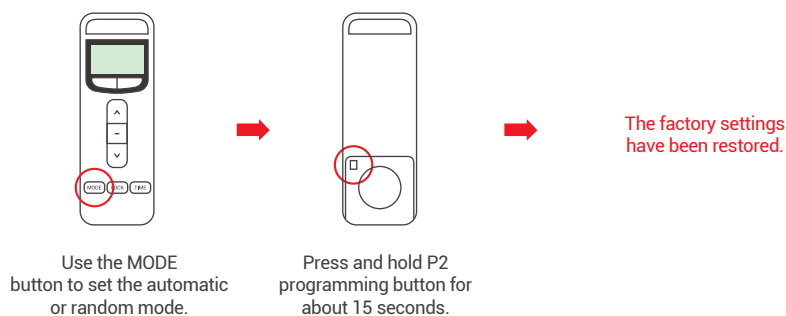
7. Checking and activating automatic opening and closing times



8. Factory settings



Restoring the factory settings will delete the set automatic opening and closing times.



9. Programming first transmitter to R-type motors



1. Way of programming first transmitter depends on type of radio receiver. When programming first transmitter please follow instruction of the device that is going to be controlled by the transmitter.
2. Longer than 5 seconds pause between series of button clicks during programming will cause device to switch off from programming mode without saving any changes.
3. Programming transmitter using this method will result in deleting receiver memory.

