



In order to fully explore available functions of SMART TOUCH 2 system please take a moment and read this manual before using the device. SMART TOUCH 2 system is compatible with all YOODA brand devices.

## 1. General information



1. Range:  
up to 35 meters

2. Battery:  
1 x CR2430

3. Power supply:  
3 V

4. Dimensions of the transmitter:  
40 x 65 x 17 mm

6. Transmitting power:  
10 mW

7. Operating temperature:  
from -20°C to 50°C

8. Protection degree:  
IP 55

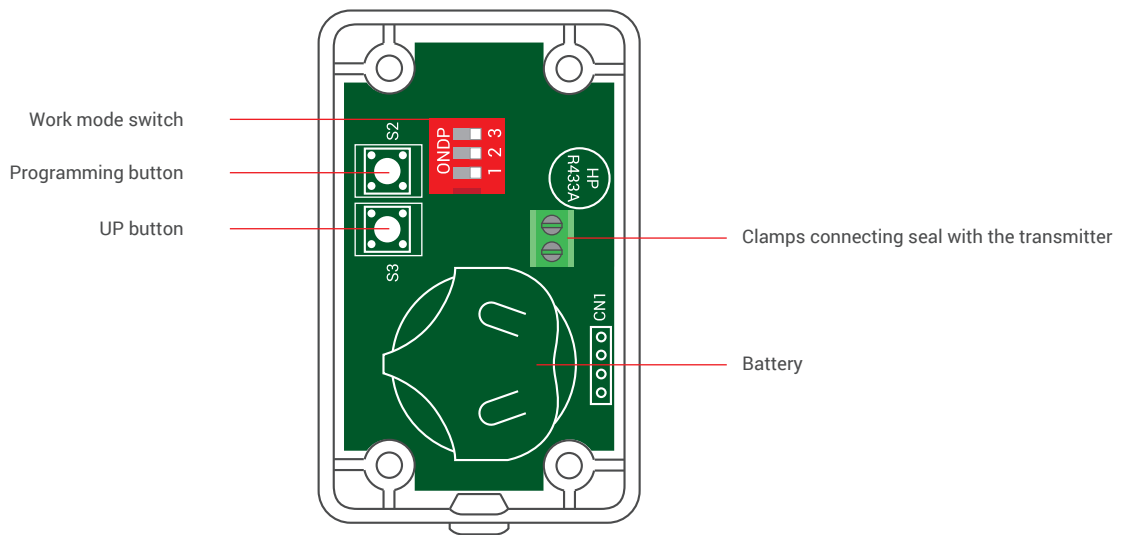
9. Possibility to program 3 work modes:  
a) stop the work motor,  
b) stop the work motor and reverse one turn  
c) stop and maximum motor reverse to the upper end position

From the top:  
SMART TOUCH 2 transmitter system  
Seal SMART TOUCH 2 system  
Finish elements of the seal for SMART TOUCH 2 system  
Transition strip with touch sensor for SMART TOUCH 2 system

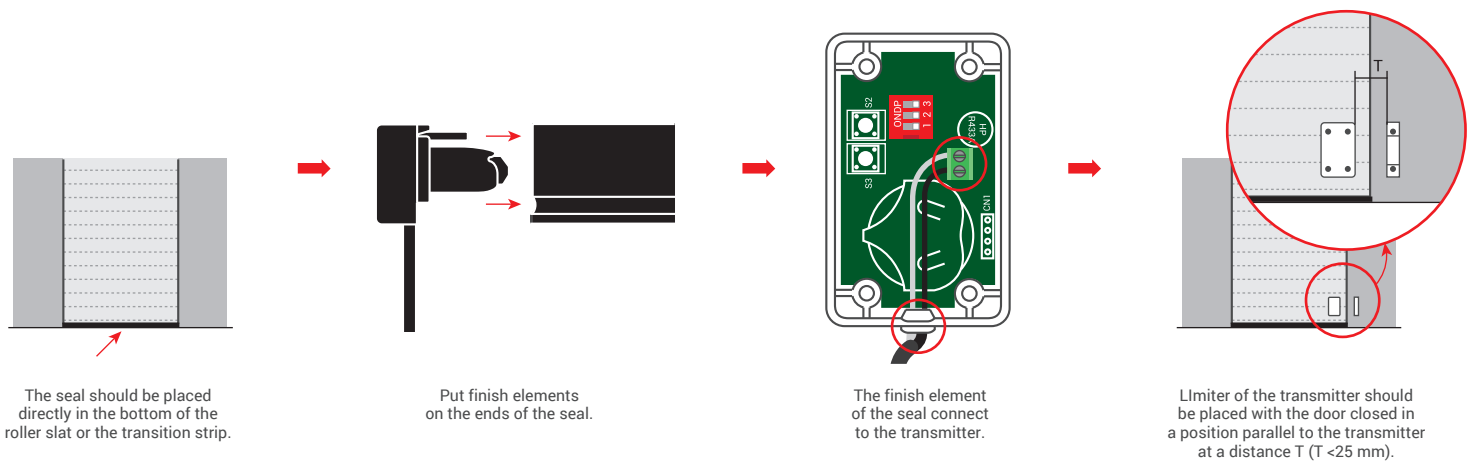


Radio receiver range is a variable value and can differ from declared values depending on conditions in which device operates. Possible sources of changes in range are building construction, interference caused by other radio transmitters etc.

## 2. Detailed description



## 3. Installation



## 4. Choosing work mode

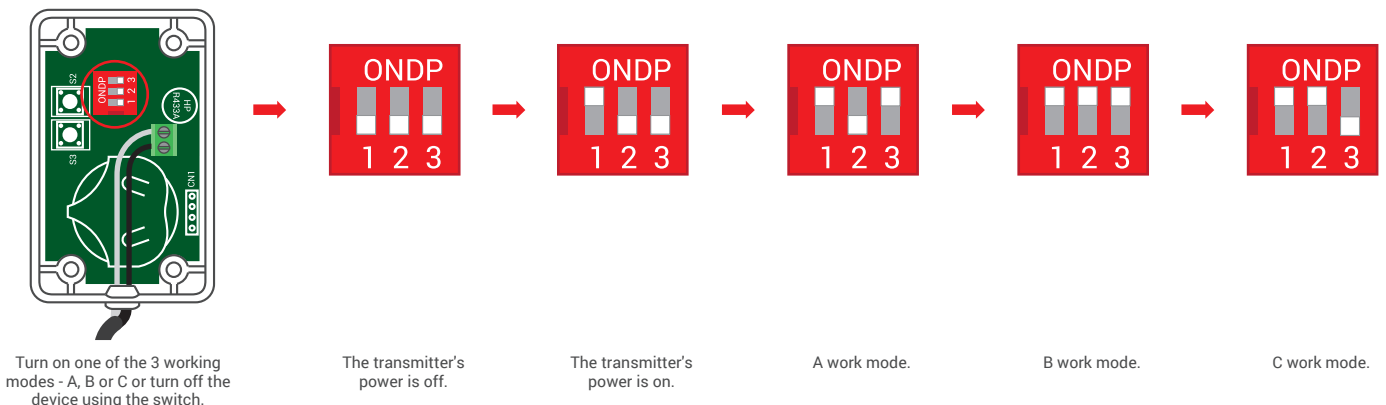


The garage door security system includes 3 working modes A,B and C. Programming the transmitter takes place after opening the transmitter cover.

**WORK MODE A - stop the work mode of the motor.** After encountering an unexpected obstacle in the area of the closed garage door or roller shutter, the system will stop automatically and immediately.

**WORK MODE B - stop the work mode of the motor and reverse one turn.** After encountering an unexpected obstacle in the area of the closed garage door or roller shutter, the cover will be automatically and immediately stopped and its operation will be reversed by one turn.

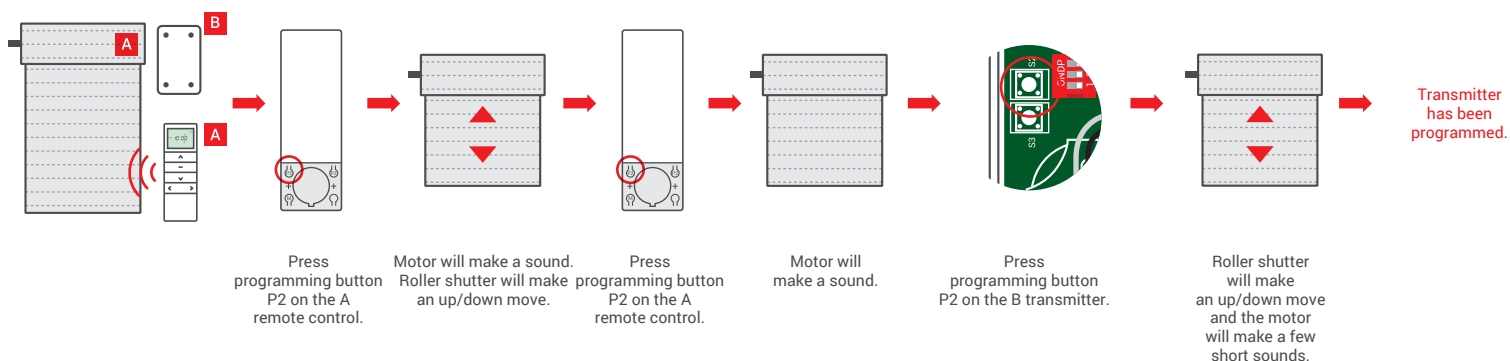
**WORK MODE C - and maximum motor reverse to the upper end position.** After encountering an unexpected obstacle in the area of the closed garage door or roller shutter, the motor will automatically stop and the cover will be raised to its upper end position.



## 5. Adding transmitter to R type motors



Longer than 5 seconds pause between series of button clicks during programming will cause device to switch off from programming mode without saving any changes.



## 6. Adding transmitter to R type motors using the key-ring remote control



1. Simultaneously pressing the STOP and UP buttons performs the function of programming button.
2. Longer than 5 seconds pause between series of button clicks during programming will cause device to switch off from programming mode without saving any changes.

