



In order to fully explore available functions of MAGNETIC DELUXE YSH series please take a moment and read this manual before using the device. MAGNETIC DELUXE YSH transmitters are compatible with all YOODA SMART HOME brand devices.



MAGNETIC Deluxe YSH transmitters are dedicated to two-way communication.

1. General information



5-channel MAGNETIC Deluxe YSH remote control with display and timer (MAGNETIC Deluxe_5RT YSH)

1. Control:
can control single motor, or a group of up to 20 motors on each channel

2. Range:
200 meters outdoor,
35 meters indoor

3. Battery:
CR2450

4. Power supply:
3 V

5. Dimensions:
130 x 45 x 10 mm

6. Transmitting power:
10 mW

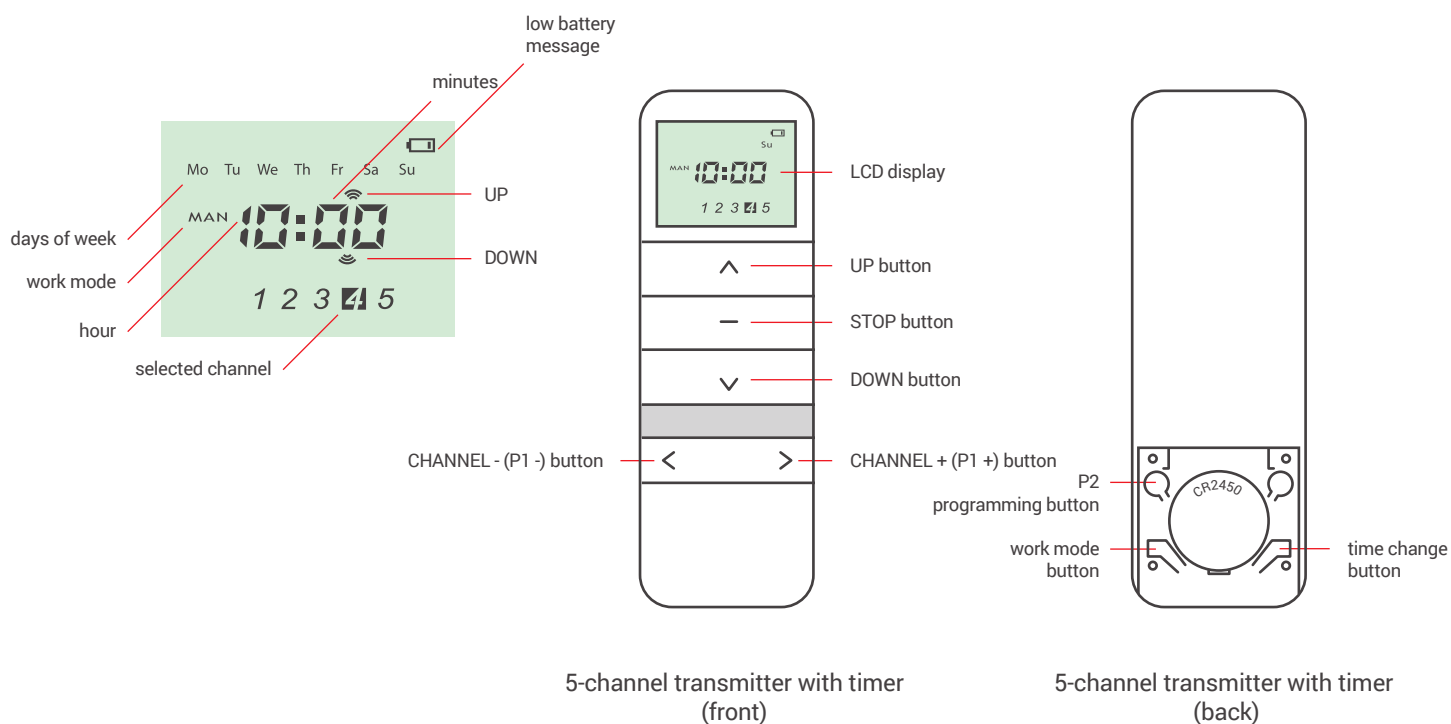
7. Operating temperature:
from 0°C to 50°C

8. Protection degree:
IP 30



Radio receiver range is a variable value and can differ from declared values depending on conditions in which device operates. Possible sources of changes in range are building construction, interference caused by other radio transmitters etc.

2. Detailed description





1. To control all receivers by the transmitter run the channel group. The group channel is on when all channels are highlighted.
2. For devices that are programmed on all channels operate at the programmed time, you should select a group channel on the transmitter and set the automatic mode.
3. Estimated battery lifespan is 1 year if the device runs 4 commands a day in average.
4. Batteries should be changed when receiving device stops reacting to commands.
5. When replacing the battery, pay attention to the correct polarity.

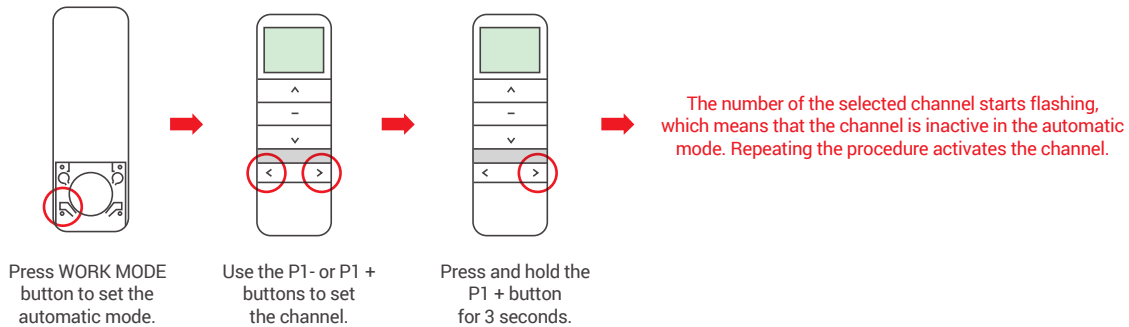


Batteries contain substances that may be hazardous to health and may pollute the environment. Used batteries should be disposed of properly.

3. Activating channels in automatic mode

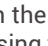


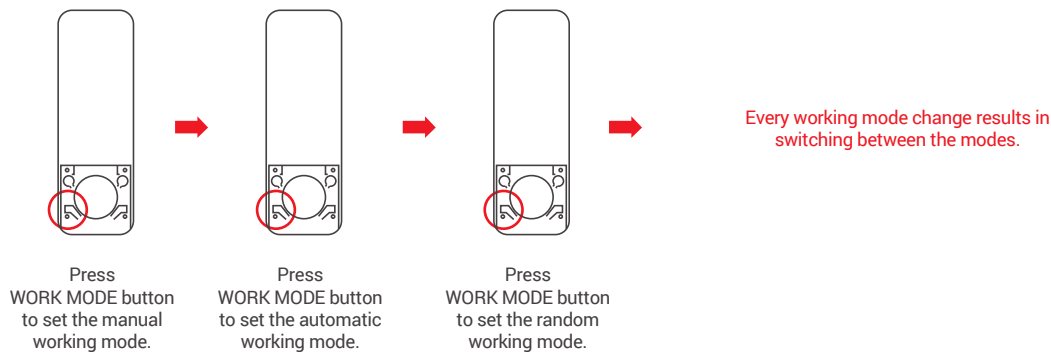
1. Each channel can be activated or deactivated in the automatic mode. If the channel is inactive, the transmitter will not control the receiver in this mode.
2. The channel is inactive if number of this channel is flashing.



4. Changing work mode



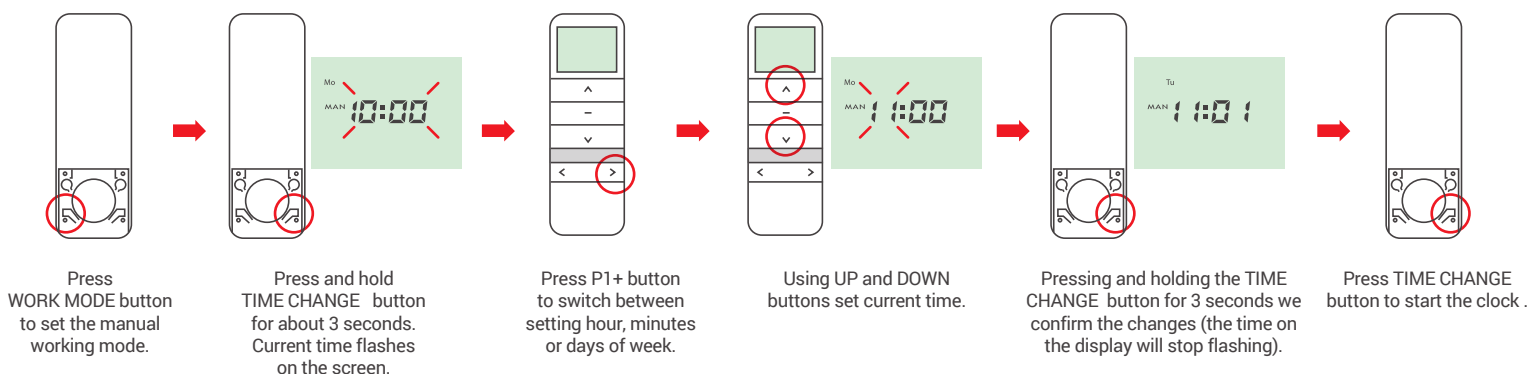
1. Manual working mode (symbol MAN appear on the display) normal working mode, without timer function.
2. Automatic working mode (symbol AUTO appear on the display) normal working mode with timer function.
3. Random working mode (symbol  appear on the display) time controlled work with random opening/closing time (up to 15 minutes difference to preset opening/closing time).
4. Working mode is changed for all channels.



5. Setting current time



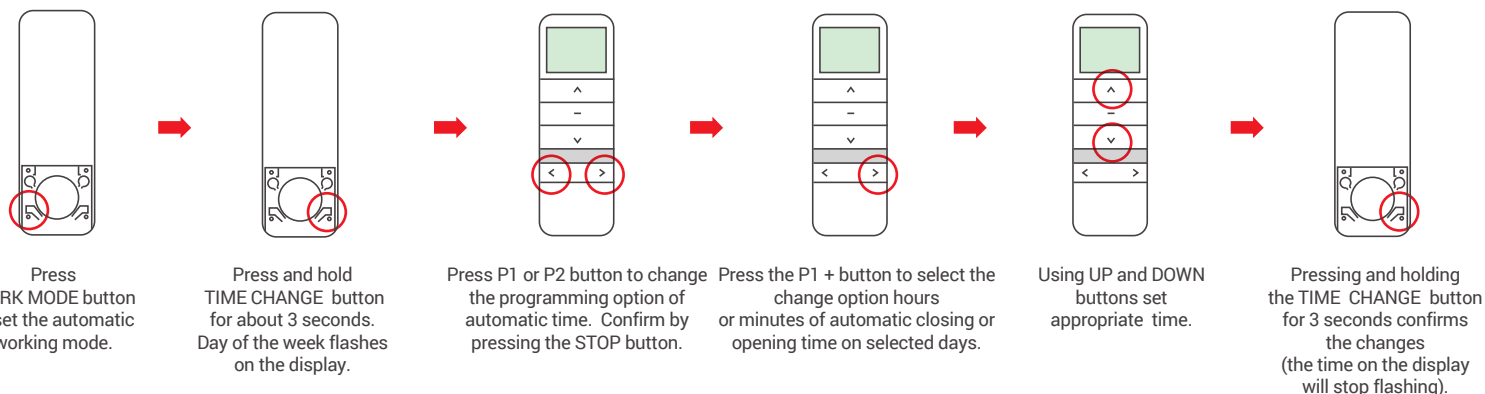
1. Time can be set only when device is in manual working mode.
2. Longer than 60 seconds pause between series of button clicks during programming will cause device to switch off from programming mode without saving any changes.



6. Setting automatic time of closing and opening



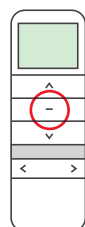
1. Closing and opening time change is possible only in automatic mode.
2. The automatic closing and opening time should be set separately on each channel.
3. Longer than 60 seconds pause between successive presses of the button will automatically exit the change mode.
4. In order for the transmitter to control roller shutters, the group channel must be turn on. This applies to all working modes of the transmitter.
5. At the time of the day, the symbol "-: -:" means the time is not active in an automatic mode.
5. When setting the automatic closing and opening time, the symbol "-: -:" means that the hour is not active in automatic mode.
6. Setting the automatic closing and opening time is possible in one of three options:
 - a) another hour for each day of the week,
 - b) one hour from Monday to Friday and another hour from Saturday to Sunday,
 - c) one hour for the entire week.



7. Function buttons lock



1. The function buttons lock prevents accidental operation of two buttons used when programming motors or radio receivers.
2. This function is factory disabled. To on / off the function, follow the procedure below.



When "L" symbol will appear on the display the function is on.

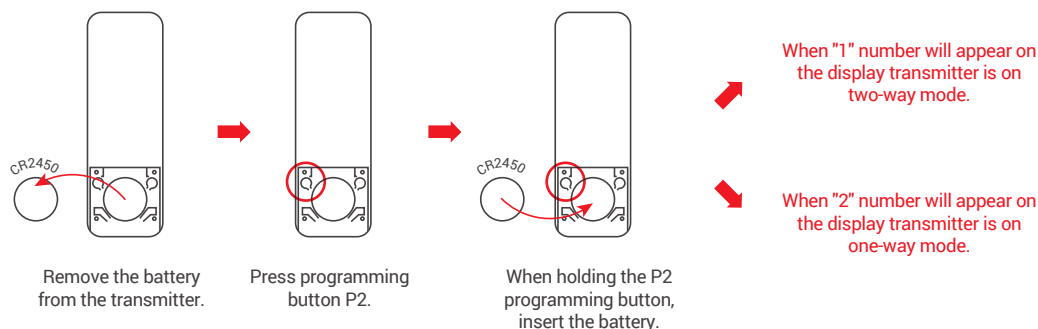
When "U" symbol will appear on the display the function is off.

Press and hold STOP button for about 15 seconds.

8. Selection of the transmitter's operating mode



1. The transmitter can operate in one of two modes:
 - a) two-way
 - b) one-way
2. The transmitter factory operates in two-way mode.



4. Programming first transmitter to EV/S-type motors



1. Way of programming first transmitter depends on type of radio receiver. When programming first transmitter please follow instruction of the device that is going to be controlled by the transmitter.
2. Longer than 6 seconds pause between series of button clicks during programming will cause device to switch off from programming mode without saving any changes.
3. If the end positions aren't set, the programming of the first transmitter will delete all existing transmitters from memory.
4. Choosing '0' group channel means remote controls all programmed devices on all channels at the same time. No programming functions can be performed on group channel. All devices programmed to any other channel can be controlled on group channel without additional programming.

