

433 MHz



In order to fully explore available functions of MAGNETIC Deluxe series please take a moment and read this manual before using the device. MAGNETIC Deluxe transmitters are compatible with all YOODA brand devices.

1. General information



Five-channel MAGNETIC DELUXE remote control with display and timer, white (MAGNETIC Deluxe_5RT)

1. Control:
can control single motor, or a group of up to 20 motors on each channel

2. Range:
200 meters outdoor,
35 meters indoor

3. Battery:
1 x CR2450

4. Power supply:
3 V

5. Dimensions:
130 x 45 x 10 mm

6. Transmitting power:
10 mW

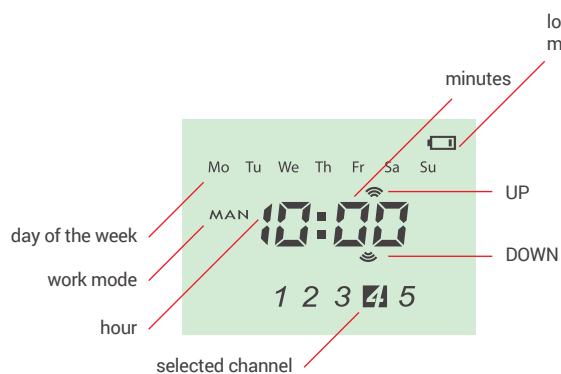
7. Operating temperature:
from 0°C to 50°C

8. Protection degree:
IP 30

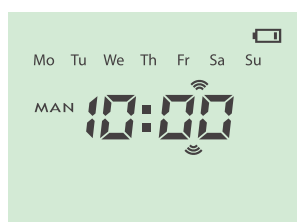


Radio receiver range is a variable value and can differ from declared values depending on conditions in which device operates. Possible sources of changes in range are building construction, interference caused by other radio transmitters etc.

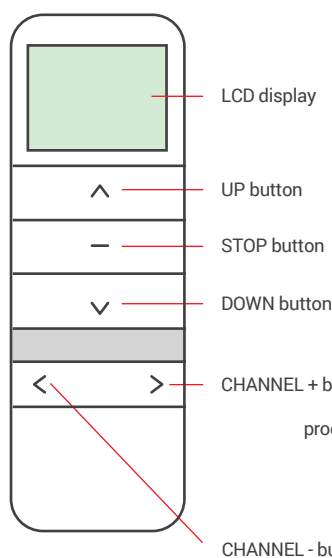
2. Detailed description



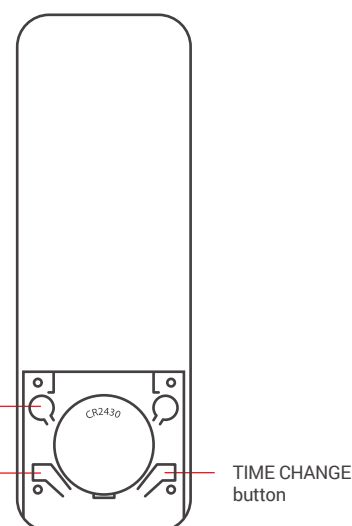
Display of five-channel transmitter with timer



Display of single-channel transmitter with timer (this transmitter has no channel number)



Single-channel or 5-channel transmitter with timer (front)



Single-channel or 5-channel transmitter with timer (back)



1. To control all receivers by the transmitter run the channel group. The group channel is on when all channels are highlighted.
2. For devices that are programmed on all channels operate at the programmed time, you should select a group channel on the transmitter and set the automatic mode.
3. Estimated battery lifespan is 1 year if the device runs 4 commands a day in average.
4. Batteries should be changed when receiving device stops reacting to commands.
5. When replacing the battery, pay attention to the correct polarity.

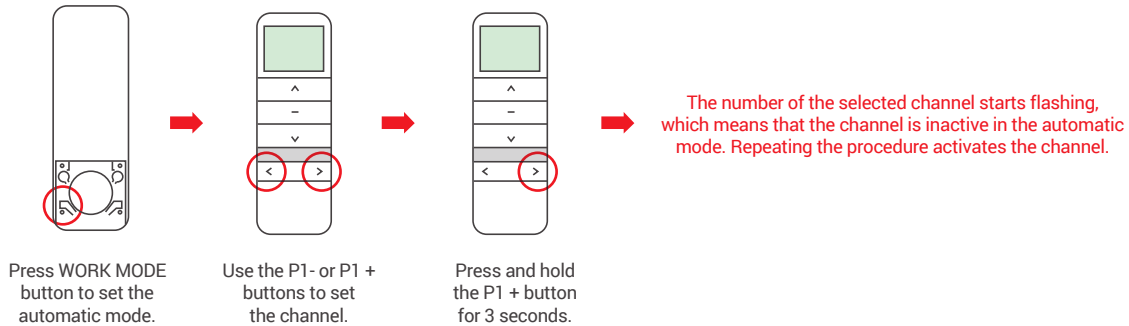


Batteries contain substances that may be hazardous to health and may pollute the environment. Used batteries should be disposed of properly.

3. Activating channels in automatic mode



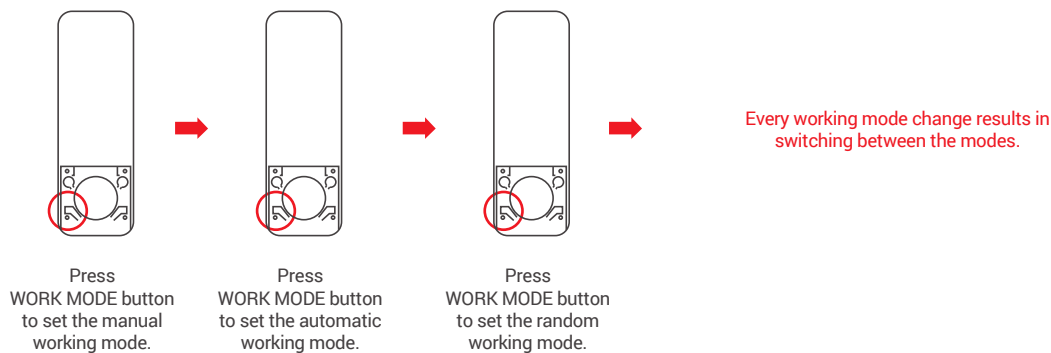
1. The function is for a five-channel transmitter.
2. Each channel can be activated or deactivated in the automatic mode. If the channel is inactive, the transmitter will not control the receiver in this mode.
3. The channel is inactive if number of this channel is flashing.



4. Changing work mode



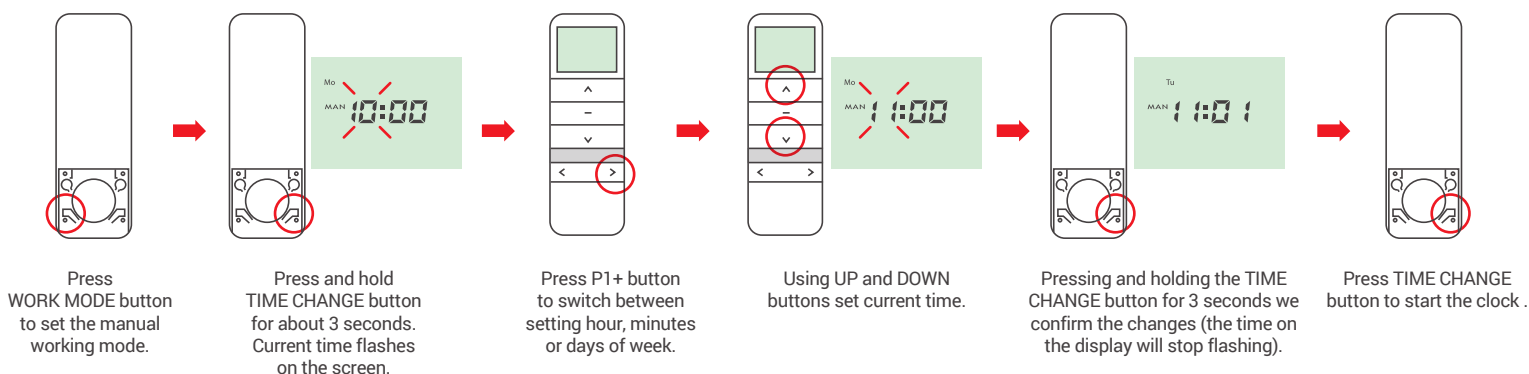
1. Manual working mode (symbol MAN appear on the display) normal working mode, without timer function.
2. Automatic working mode (symbol AUTO appear on the display) normal working mode with timer function.
3. Random working mode (symbol $\Delta \text{U} \text{O}$ appear on the display) time controlled work with random opening/closing time (up to 15 minutes difference to preset opening/closing time).
4. Working mode is changed for all channels.



5. Setting current time



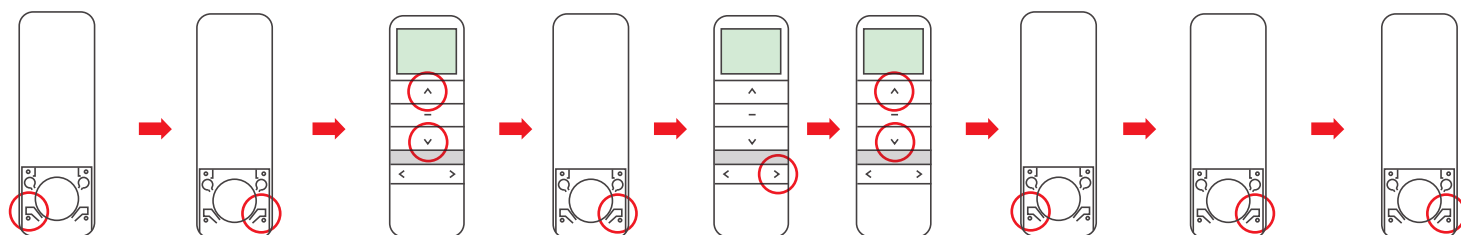
1. Time can be set only when device is in manual working mode.
2. Longer than 60 seconds pause between series of button clicks during programming will cause device to switch off from programming mode without saving any changes.



6. Setting automatic time of closing and opening



1. Closing and opening time change is possible only in automatic mode.
2. The automatic closing and opening time should be set separately on each channel.
3. Longer than 60 seconds pause between successive presses of the button will automatically exit the change mode.
4. In order for the transmitter to control roller shutters, the group channel must be turn on. This applies to all working modes of the transmitter.
5. When setting the automatic closing and opening time, the symbol "- :-" means that the hour is not active in automatic mode.
6. The difference between the programmed automatic opening and closing time can not be less than 32 minutes. If you try to set times with a difference less than the allowable one, the display will show an error message and the changes will not be saved.
7. To exit the time change mode without saving changes, press the STOP button.
8. The time of automatic opening and closing is set separately for each day of the week.



Press WORK MODE button to set the automatic working mode.

Press and hold TIME CHANGE button for about 3 seconds. Opening time is visible on the display.

Use the UP or DOWN buttons to check the set time on each day of the week.

Press the CHANGE TIME button. The opening time flashes.

Press the P1 + button to select the change option hours or minutes.

Use the UP or DOWN buttons to set the appropriate time.

Use the WORK MODE button to change between opening or closing time.

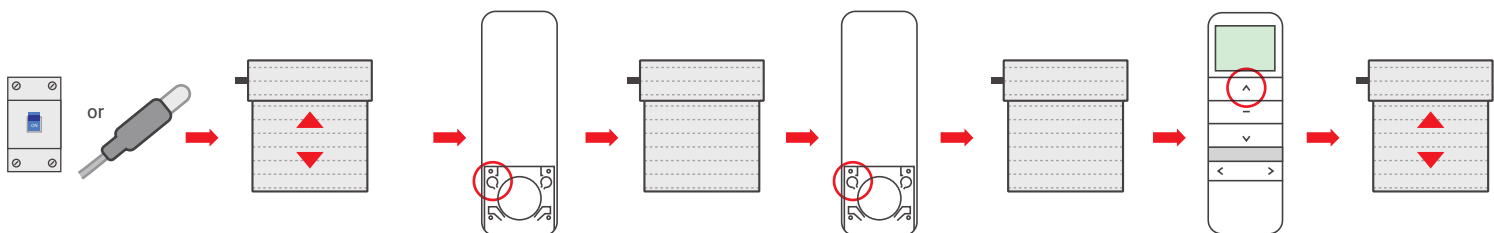
Use the TIME CHANGE button, to change the day of the week in which the automatic opening and closing time is programmed.

After setting the automatic opening and closing time on each day of the week, we confirm the settings by press and hold the CHANGE TIME button for 3 seconds.

7. Programming first transmitter to R-type motors



1. Way of programming first transmitter depends on type of radio receiver. When programming first transmitter please follow instruction of the device that is going to be controlled by the transmitter.
2. Longer than 5 seconds pause between series of button clicks during programming will cause device to switch off from programming mode without saving any changes.
3. Programming first transmitters will result in deleting all previously programmed transmitter.



Turn on power supply or press microswitch (for 2 sec.) when power is on.

Motor will make a sound. Roller shutter will make an up/down move.

Press programming button (P2) on the remote.

Motor will make a sound.

Press programming button (P2) on the remote.

Motor will make a sound.

Press UP button on the remote.

Roller shutter will make an up/down move and the motor will make a few short sounds.