



Non-compliance with the specification might cause risk for life or health and can determine proper work of the blinds.
We strongly recommend to comply with the specification.

1. General information



Motor for curtains DT72LE

Motors of the DT72LE series are motors with a radio receiver, which together with the curtain rod are designed to automate curtains and enable wireless control using a remote control. They have electronic limit switches that are set automatically. The DT72LE series motors are compatible with all YOODA and CORTINO brand transmitters.

Radio receiver memory:
up to 20 transmitters

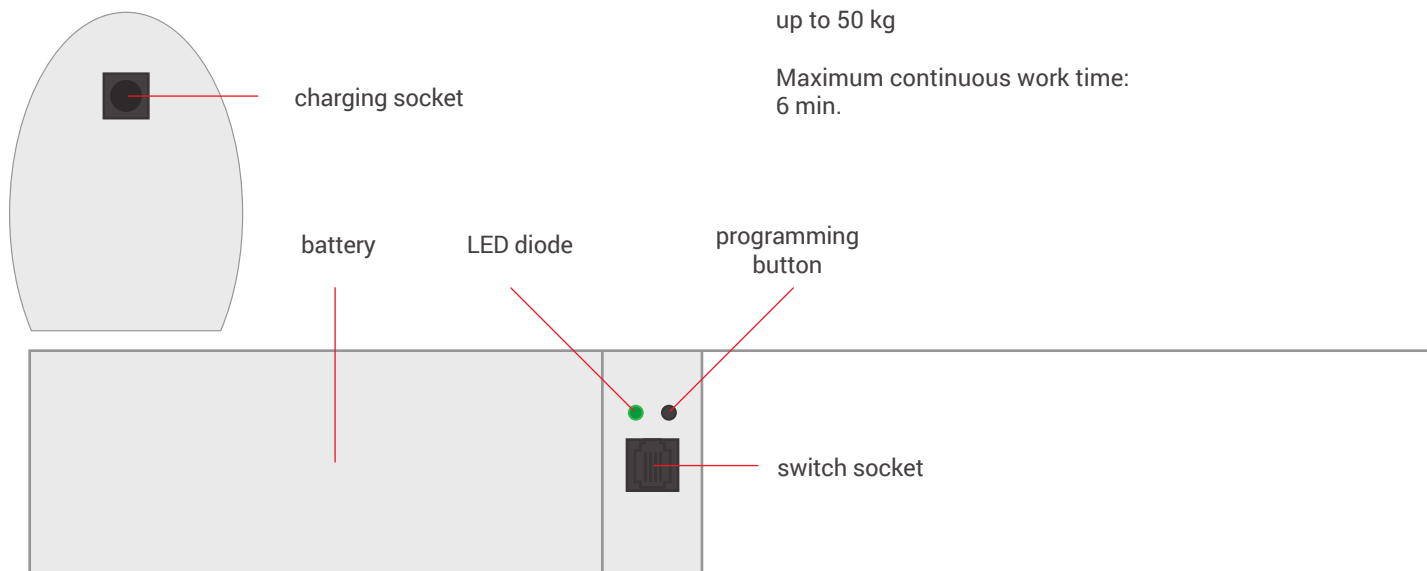
Power supply:
14,8 V DC

Operating temperature:
from 0°C to 50°C

Protection degree:
IP 20

Load:
up to 50 kg

Maximum continuous work time:
6 min.



2. Safety measures

Before installing or using motor please read the following instruction. The installer must comply with the standards and regulations in force in the country where the appliance will be installed and provide information to users about the conditions and maintenance of the device. Failure to follow these instructions can present risk to life and health, or invalid functioning of the roller shutter. This also results in the loss of warranty rights.



Motors torque parameter should be adequate to the weight of the curtain.



Motor cables should be fixed in such a way that they have not been damaged by working curtain.



Electrical system control should be performed regularly to detect any signs of use or damage of the motor.



Switch off the power supply before any installation or maintenance operation.



All contact of the motor with any liquids should be reduced to minimum.

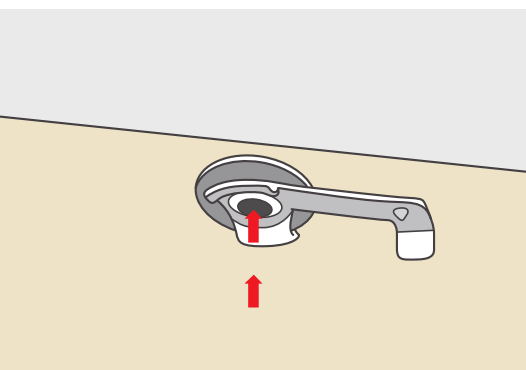


Motor and its control system should be kept out or reach of children.

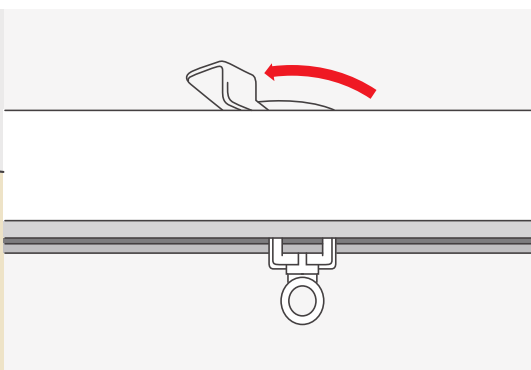


The switch should be mounted at a height of not less than 140 cm, and at such a distance from the curtain to be able to observe its operation during use.

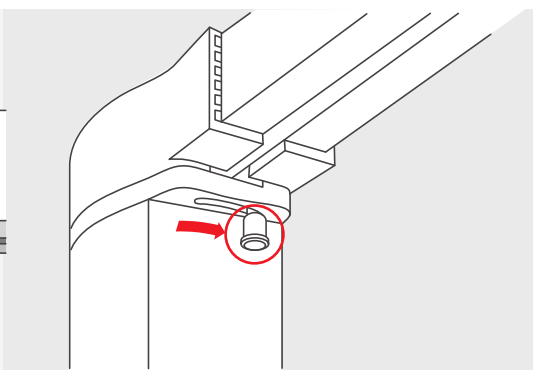
3. Installation



1. We mount the handles. Two handles per meter of curtain track, and one for each following meter of curtain track.



2. Place the curtain track on the handles.

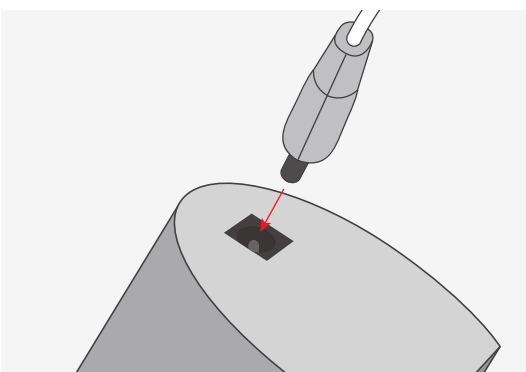


3. Mount the motor in the holder, then move the protection until it snaps into the motor.

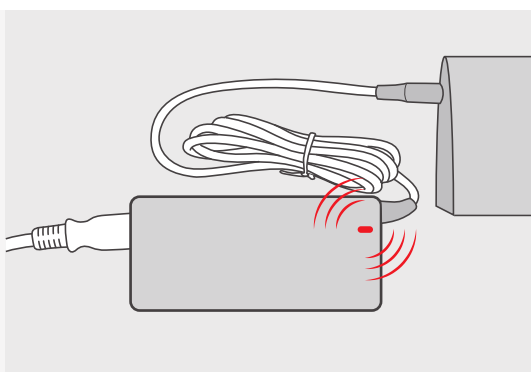
4. Battery charging



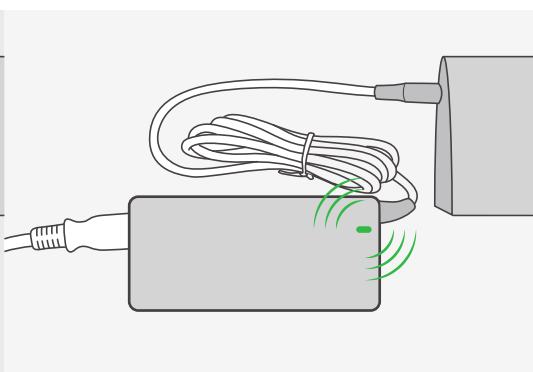
1. Use only the dedicated charger for the device. Using another charger may damage the motor.
2. Charge the battery at least once every 6 months.
3. It is recommended to charge the battery for min. 6 hours.
4. Ensure that the motor is fully charged before the first start-up.



Connect the motor to the charger.



When charging the battery, the LED diode lights up red.

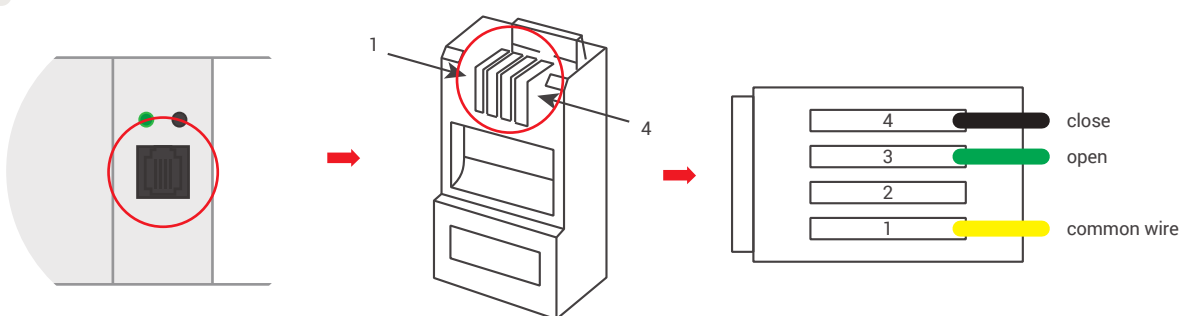


When the battery is charged, the LED diode lights up green.

5. Connecting and configuring of the switch.



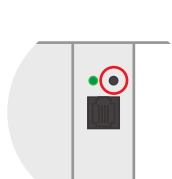
1. Connect the switch to the socket using the RJ plug. For mounting the RJ plug, use the right tools for it.



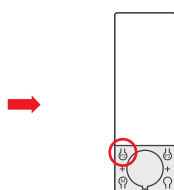
2. The motor can work in one of four switch modes:

I MODE - ASTABLE SWITCH FOR BLINDS

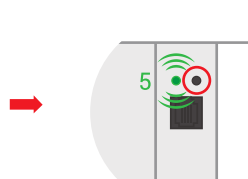
- a) A short circuit between wires 1 and 3 causes open or stop the curtain.
- b) A short circuit between wires 1 and 4 closes or stops the curtain.



Press and hold the programming button on the motor for 5 seconds. Release programming button after the second flash of the diode.



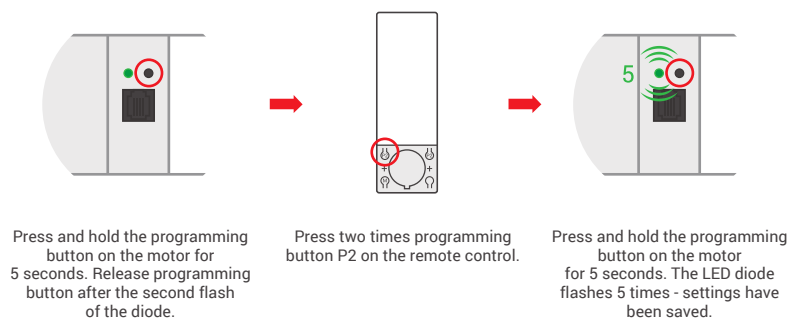
Press programming button P2 on the remote control.



Press and hold the programming button on the motor for 5 seconds. The LED diode flashes 5 times - settings have been saved.

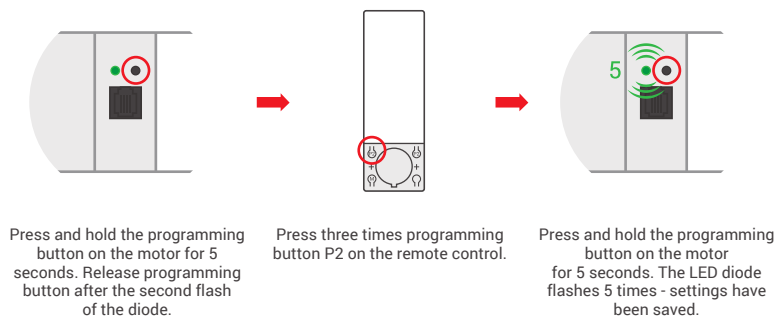
II MODE - ASTABLE SWITCH

- a) A short circuit between wires 1 and 3 causes open the curtain.
- b) A short circuit between wires 1 and 4 closes the curtain.
- c) A short circuit between wires 1,3 and 4 stops the curtain.



III MODE - IMPULSE SWITCH

- a) A short circuit between wires 1 and 3 causes to move the curtain in step-by-step mode.

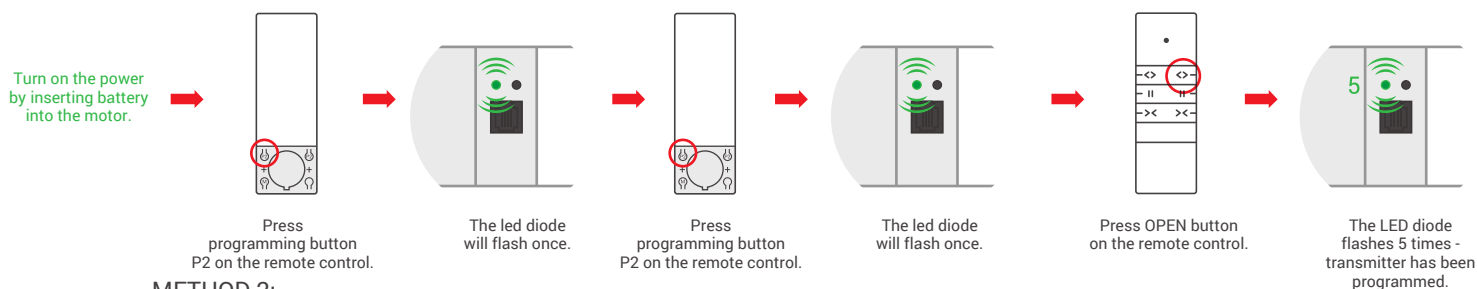


6. Programming first transmitter

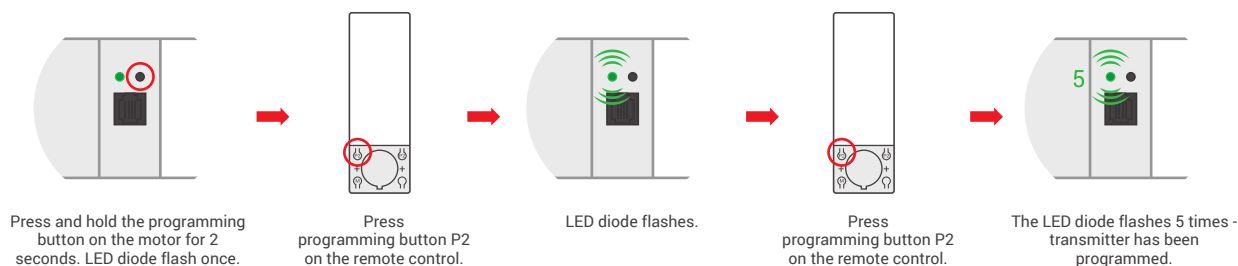


1. Longer than 5 seconds pause between series of button clicks during programming will cause device to switch off from programming mode without saving any changes.

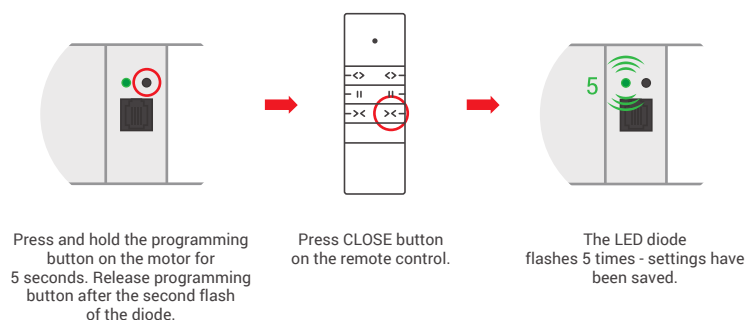
METHOD 1:



METHOD 2:



7. Changing motors direction



8. Programming another transmitter



Press and hold the programming button on the motor for 2 seconds. LED diode flash once.

Press programming button on the remote control.

LED diode flashes.

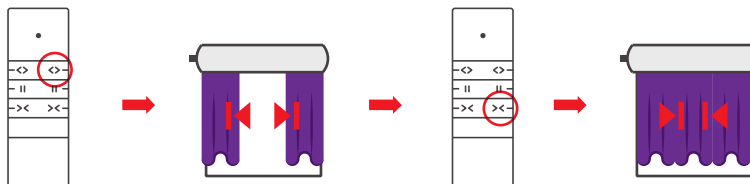
Press programming button on the remote control.

The LED diode flashes 5 times - the transmitter has been programmed.

9. Programming limit positions



The limit positions are set automatically after the first cycle.



Press OPEN button on the remote control.

The motor will stop the curtain and set the limit position.

Press CLOSE button on the remote control.

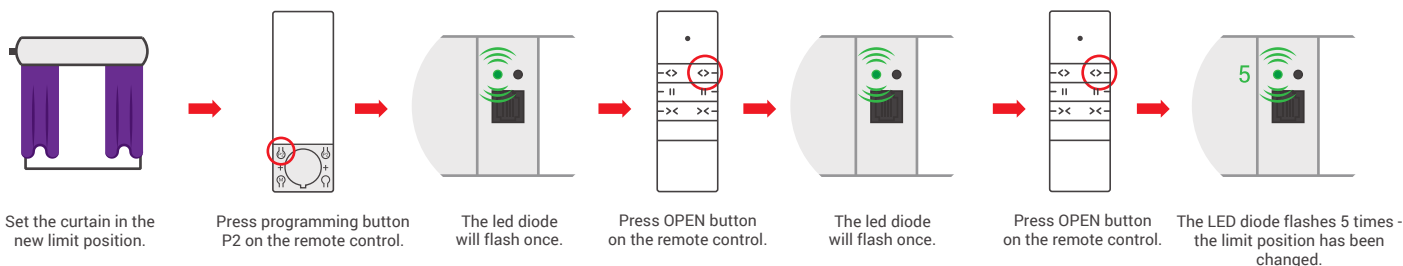
The motor will stop the curtain and set the limit position.

10. Regulation limit positions



1. After automatic setting of the limit positions, it is possible to adjust them manually.
2. The limit positions set manually must not be outside the range of the limit positions set automatically.

LIMIT POSITION OF THE OPEN CURTAIN:



Set the curtain in the new limit position.

Press programming button P2 on the remote control.

The led diode will flash once.

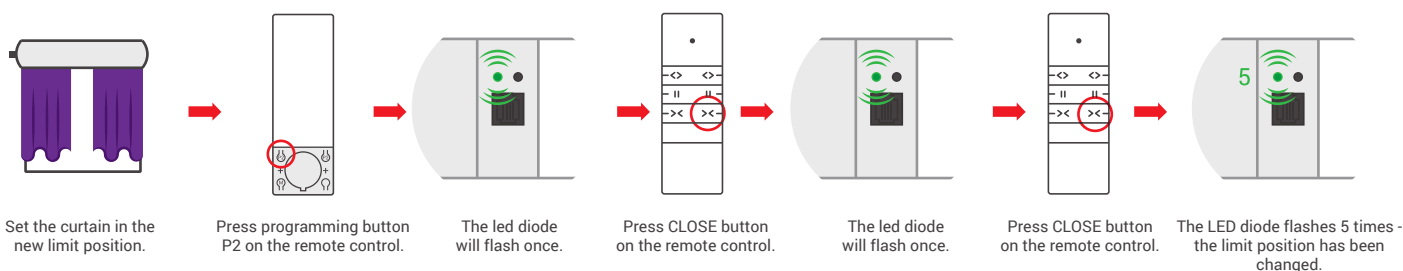
Press OPEN button on the remote control.

The led diode will flash once.

Press OPEN button on the remote control.

The LED diode flashes 5 times - the limit position has been changed.

LIMIT POSITION OF THE CLOSE CURTAIN:



Set the curtain in the new limit position.

Press programming button P2 on the remote control.

The led diode will flash once.

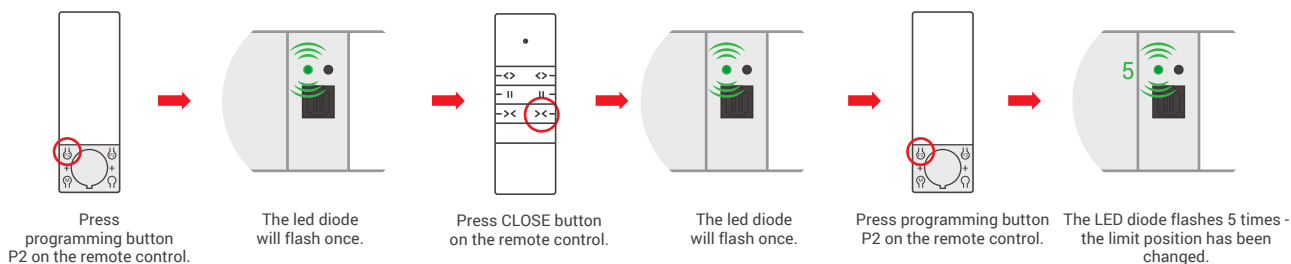
Press CLOSE button on the remote control.

The led diode will flash once.

Press CLOSE button on the remote control.

The LED diode flashes 5 times - the limit position has been changed.

11. Removing limit positions



Press programming button P2 on the remote control.

The led diode will flash once.

Press CLOSE button on the remote control.

The led diode will flash once.

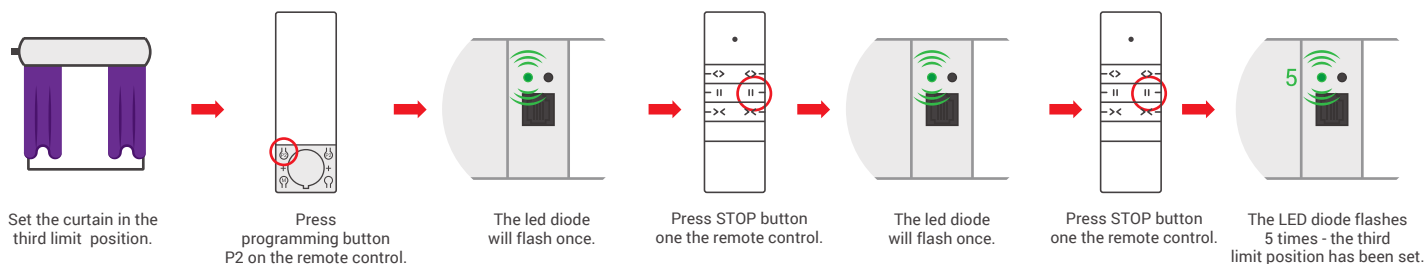
Press programming button P2 on the remote control.

The LED diode flashes 5 times - the limit position has been changed.

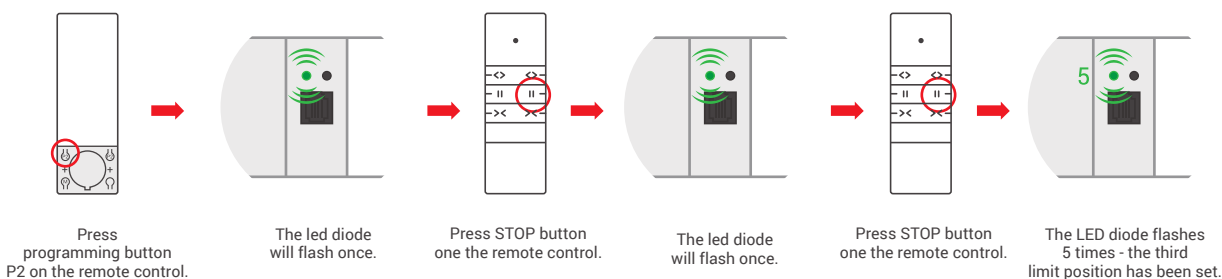
12. Programming the third limit position



1. After setting the limit positions, it is possible to set the third position (favorite) between those positions.
2. To program a new third limit position, the previously programmed position must be deleted.
3. After performing the following procedure, holding down the STOP button for 3 seconds causes the curtain to be positioned in the third limit position.



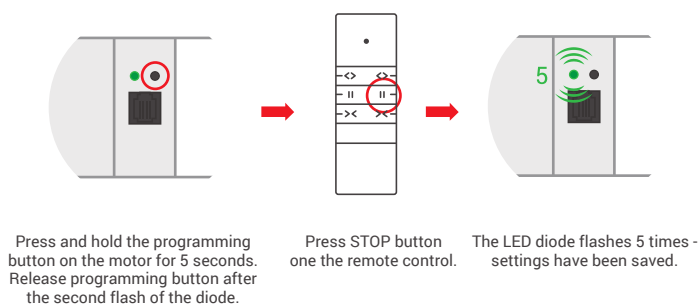
13. Removing third limit position



14. On/Off MOTION TOUCH function



1. This function is enabled at the factory.
2. The MOTION TOUCH function automatically starts the motor when the curtain is pulled.
3. Follow the procedure below to on / off the function.



15. Restore factory settings

