



In order to fully explore available functions of AURA series please take a moment and read this manual before using the device.
AURA control units are compatible with all YOODA brand devices.

1. General information



1. Control:
AURA_1Cf: can control single motor
AURA_2Cf: can control two motors

2. Memory:
up to 20 transmitters

3. Range:
200 meters outdoor,
35 meters indoor

4. Power supply:
230 V / 50 Hz

5. Output voltage:
230 V / 50 Hz

6. Output power:
300 W

7. Dimensions:
80 x 80 x 50 mm

8. Operating temperature:
from 0°C to 50°C

9. Protection degree:
IP 30

Illustrations (from the top):

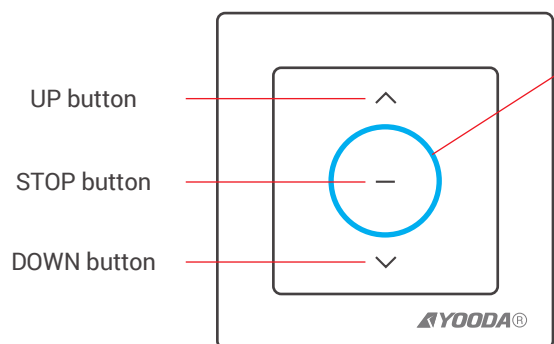
Fig. 1. Single-channel AURA control unit (AURA_1Cf)

Fig. 2. 2-channel AURA control unit (AURA_2Cf)

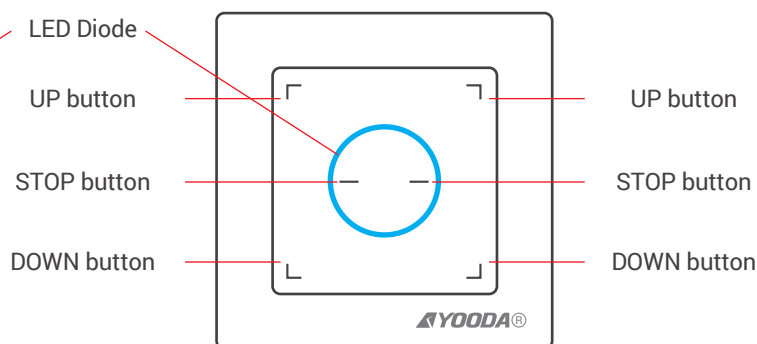


Radio receiver range is a variable value and can differ from declared values depending on conditions in which device operates. Possible sources of changes in range are building construction, interference caused by other radio transmitters etc.

2. Detailed description



Singel-channel AURA control unit
(front)



2-channel AURA control unit
(front)

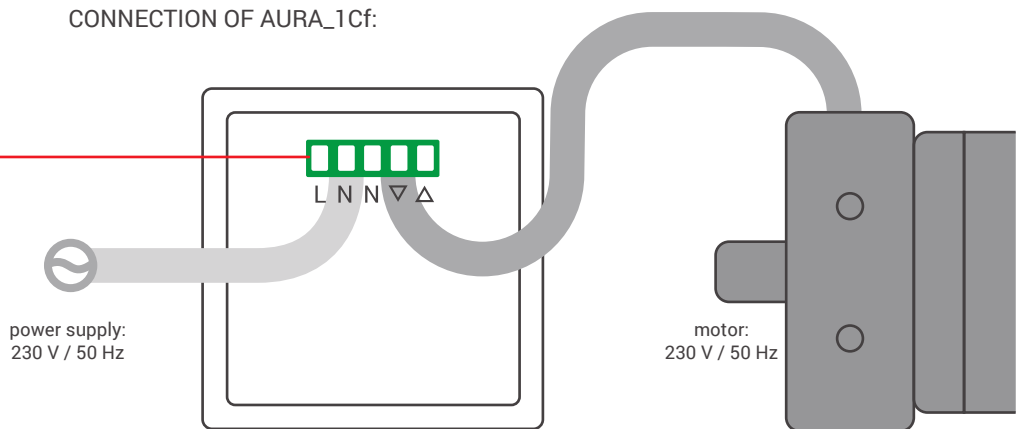
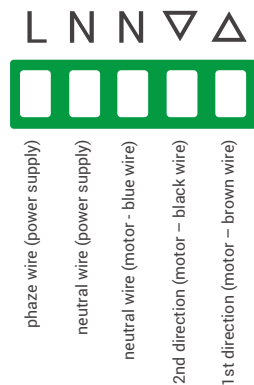
3. Connection



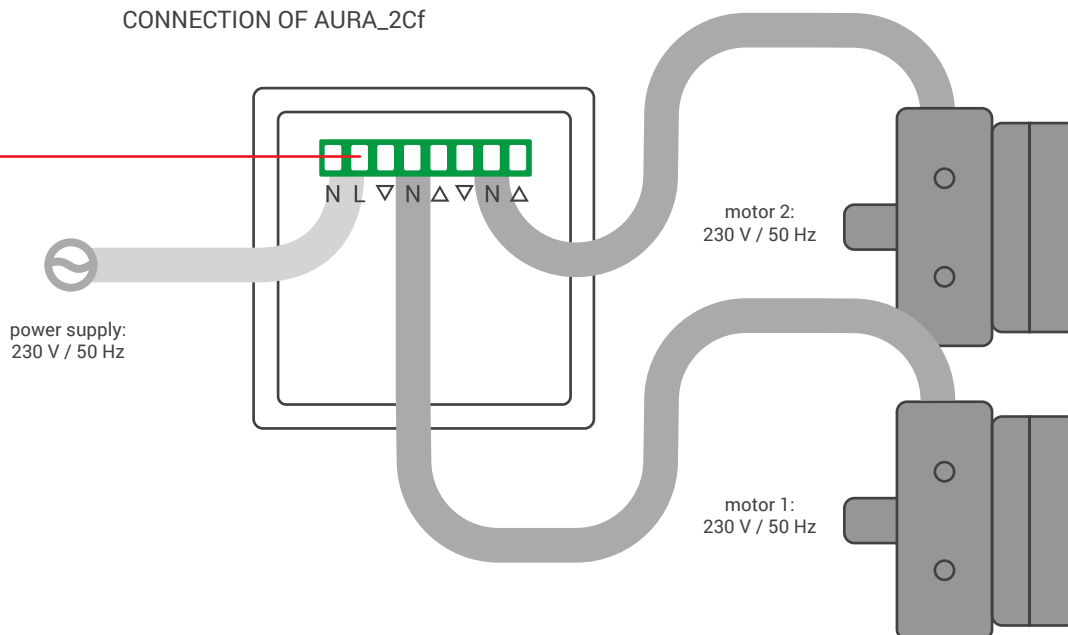
Optimal mounting parameters:

1. Minimal length from the ground > 1,5 m,
2. Minimal length from the wall and ceiling > 0,3 m,
3. Minimal length between receivers > 0,2 m.

CONNECTION OF AURA_1Cf:



CONNECTION OF AURA_2Cf

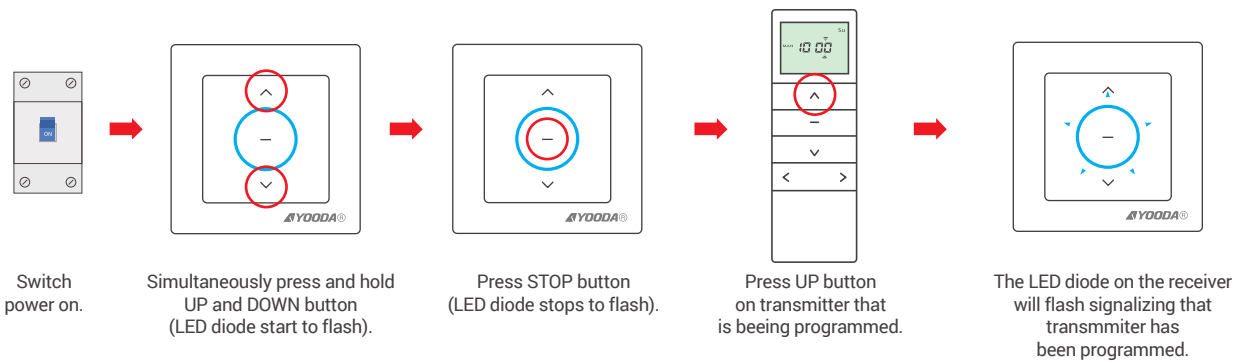


Installation of the tubular motor should be performed by specialists with 1kV or higher SEP-certified electrician's licence (SEP - Association of Polish Electrical Engineers) or equal license. Device is designed to operate in places shielded from unfavourable weather conditions. Motor should be installed in accordance with all provisions of regional law and professional standards. All cables connecting power receiver with electric source should be protected from overload and short-circuits effects with devices automatically disconnecting power. Device should be powered with a separate source and protected only with a fast-blow fuse (never slow-blow fuse). Creating electrical system using inadequate fuse may result in loosing rights under the provisions of warranty. When connecting device to power source with cables with adequate cross-section should be used. Long-lasting output load capacity table should be the ground for choosing adequate cables.

4. Programming transmitters



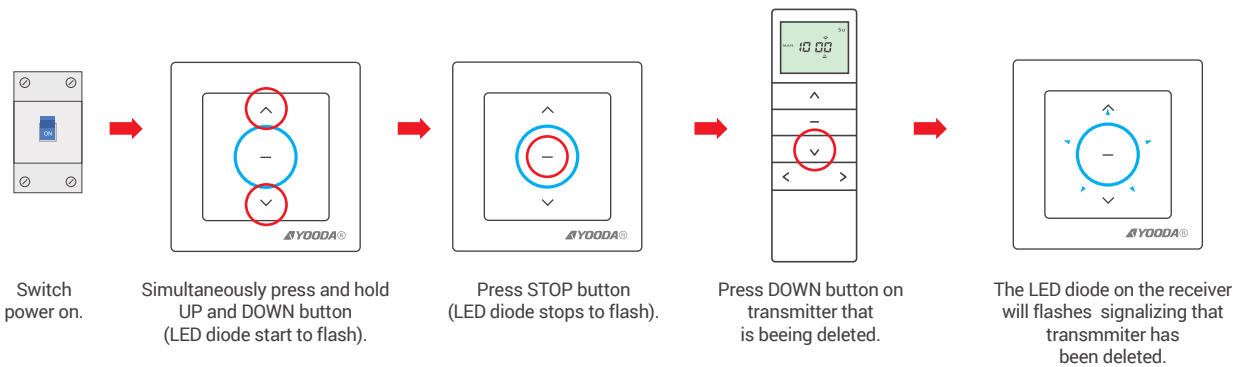
1. Longer than 6 seconds pause between series of button clicks during programming will cause device to switch off from programming mode without saving any changes.
2. Procedure described below is to be used for programming first and all other transmitters.
3. Receiver can hold in its memory up to 20 different transmitters. Adding more transmitters will remove the first programmed transmitters.



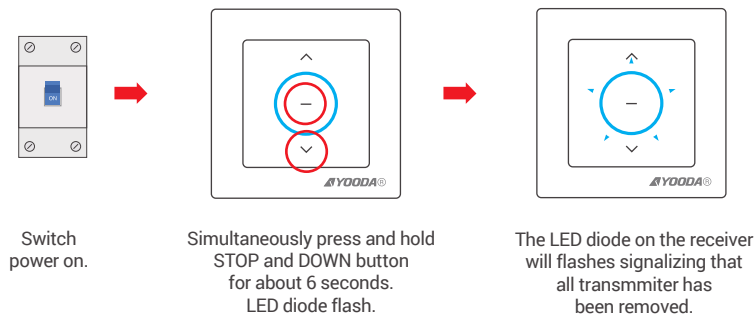
5. Deleting the transmitter



1. Longer than 10 seconds pause between series of button clicks will cause device to switch off without saving any changes.



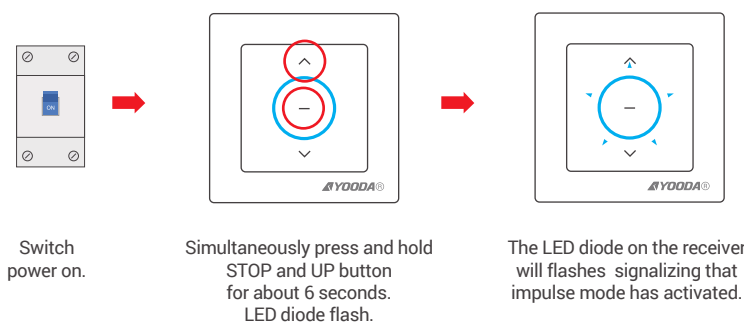
6. Deleting all transmitters



7. Activating impulse mode



When impulse mode is activated, single push of UP or DOWN button forces motor to make single part of a full turn, and when UP or DOWN button is being held for 2 seconds it will force motor to run constantly.



Impulse mode has been activated. Repeat these steps to deactivate the impulse mode.