



In order to fully explore available functions of CAMELEO series please take a moment and read this manual before using the device.  
CAMELEO control units are compatible with all YOODA brand devices.

## 1. General information



Single-channel CAMELEO flush-mounted control unit (CAMELEO\_1Cf)

1. Control:  
can control single motor
2. Memory:  
up to 20 transmitters
3. Range:  
200 meters outdoor,  
35 meters indoor
4. Power supply:  
230 V / 50 Hz
5. Output voltage:  
230 V / 50 Hz
6. Output power:  
300 W
7. Dimensions:  
80 x 80 x 50 mm
8. Operating temperature:  
from 0°C to 50°C
9. Protection degree:  
IP 30

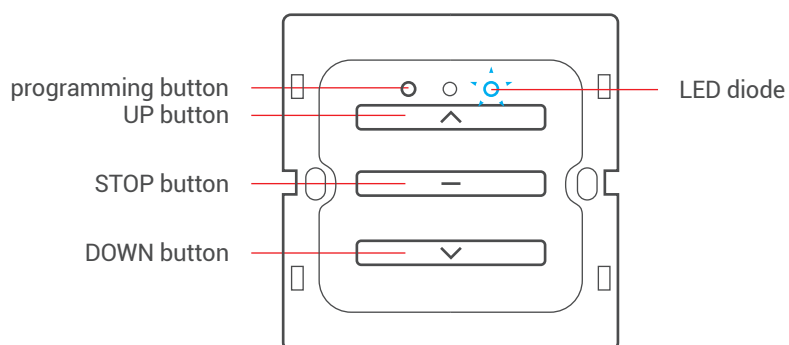


Radio receiver range is a variable value and can differ from declared values depending on conditions in which device operates. Possible sources of changes in range are building construction, interference caused by other radio transmitters etc.

## 2. Detailed description



To access the programming button, remove the frame from the front of the control unit.



Single-channel CAMELEO flush-mounted control unit (front)

### 3. Connection



Optimal mounting parameters:

1. Minimal length from the ground > 1,5 m,
2. Minimal length from the wall and ceiling > 0,3 m,
3. Minimal length between receivers > 0,2 m.

⊕ protective wire  
(power supply)

⊕ protective wire  
(motor)

L phase wire  
(power supply)

N neutral wire  
(power supply)

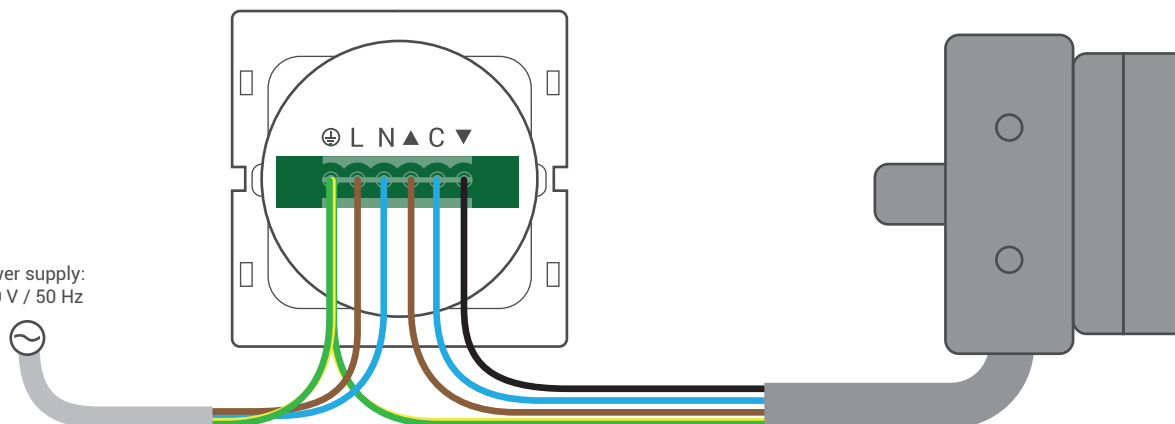
▲ 1st direction  
(motor)

C neutral wire  
(motor)

▼ 2nd direction  
(motor)

power supply:  
230 V / 50 Hz

motor:  
230 V / 50 Hz

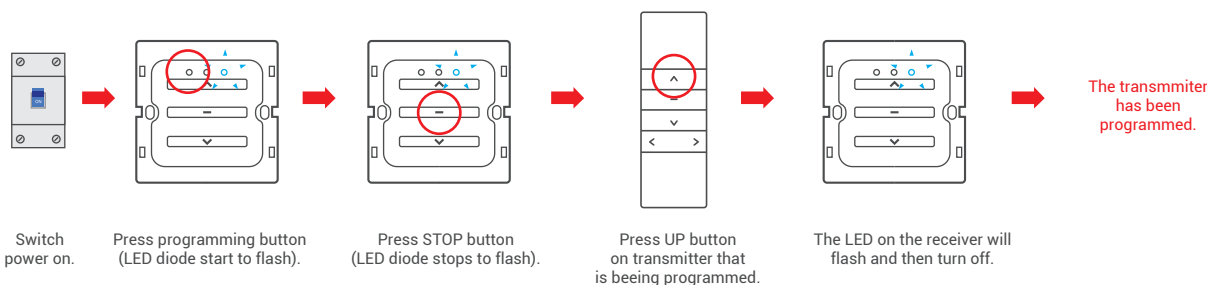


Installation of the tubular motor should be performed by specialists with 1kV or higher SEP-certified electrician's licence (SEP - Association of Polish Electrical Engineers) or equal license. Device is designed to operate in places shielded from unfavourable weather conditions. Motor should be installed in accordance with all provisions of regional law and professional standards. All cables connecting power receiver with electric source should be protected from overload and short-circuits effects with devices automatically disconnecting power. Device should be powered with a separate source and protected only with a fast-blow fuse (never slow-blow fuse). Creating electrical system using inadequate fuse may result in losing rights under the provisions of warranty. When connecting device to power source with cables with adequate cross-section should be used. Long-lasting output load capacity table should be the ground for choosing adequate cables.

### 4. Programming transmitters



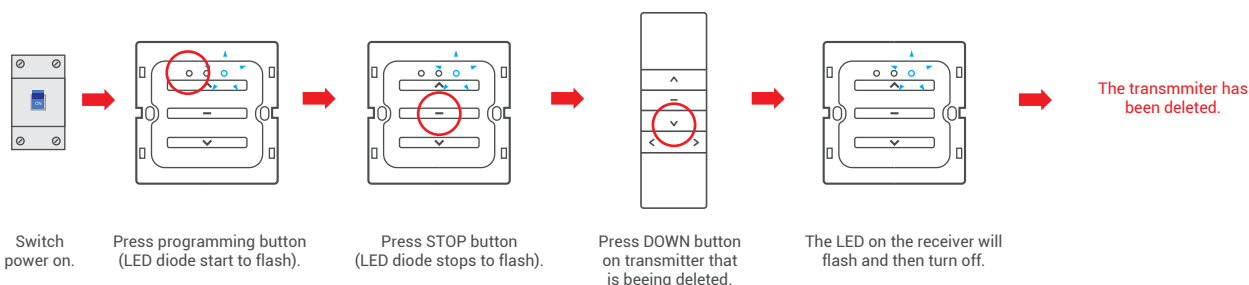
1. Longer than 10 seconds pause between series of button clicks during programming will cause device to switch off from programming mode without saving any changes.
2. Procedure described below is to be used for programming first and all other transmitters.
3. Receiver can hold in its memory up to 20 different transmitters. Adding more transmitters will remove the first programmed transmitters.



### Deleting the transmitter



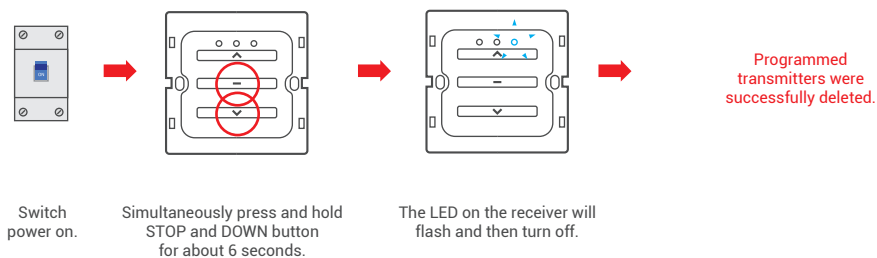
1. Longer than 10 seconds pause between series of button clicks will cause device to switch off without saving any changes.
2. Performing the procedure removes only one transmitter.



## 6. Deleting all transmitters



Proceeding with this instruction will cause for all transmitters to be deleted from receivers memory.



## 7. Activating impulse mode



When impulse mode is activated, single push of UP or DOWN button forces motor to make single part of a full turn, and when UP or DOWN button is being held for 2 seconds it will force motor to run constantly.

