

433 MHz



In order to fully explore available functions of 1-channel radio module 5 V please take a moment and read this manual before using the device.
Radio module is compatible with all YOODA brand devices.

1. General information



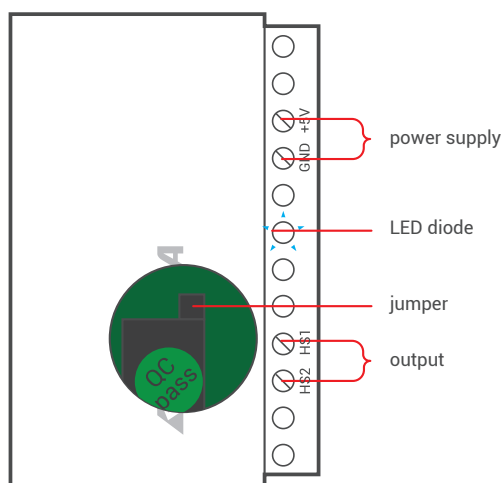
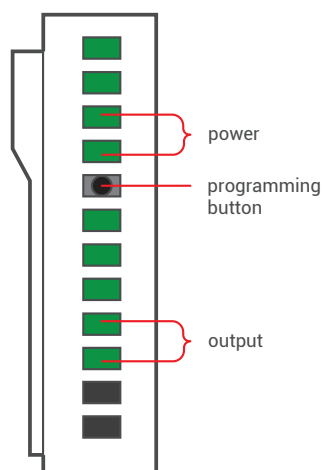
5 V radio module

1. Control:
ability to control the device in a 5 V system
2. Memory:
up to 20 transmitters
3. Range:
200 meters outdoor,
35 meters indoor
4. Power voltage:
5 V DC
5. Output voltage:
0 V or 5 V DC (voltage selected by a jumper)
6. Dimensions:
65 x 45 x 23 mm
7. Transmitting power:
10 mW
8. Operating temperature:
from 0°C to 50°C
9. Protection degree:
IP 20

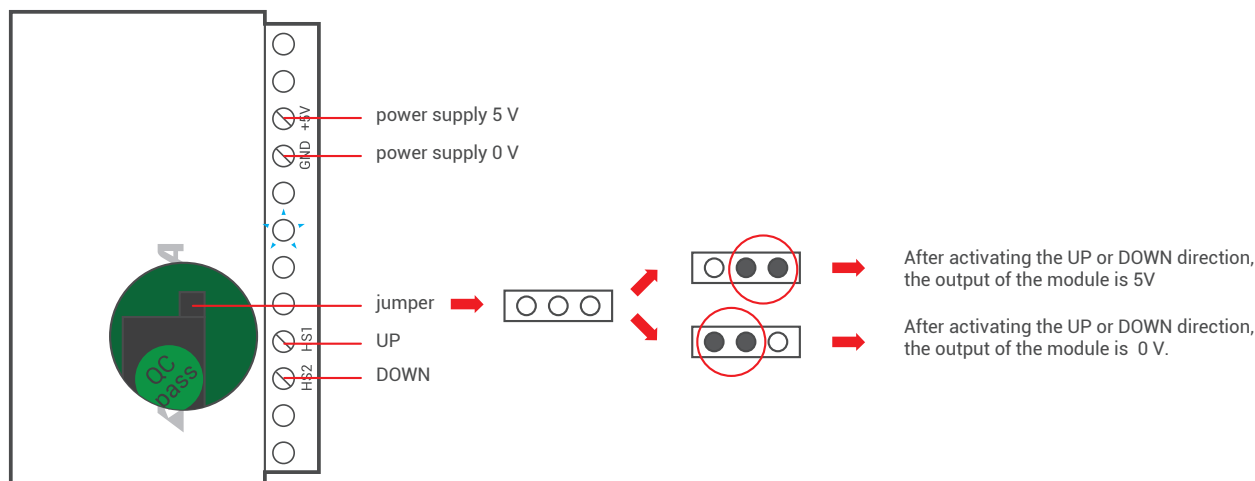


Radio receiver range is a variable value and can differ from declared values depending on conditions in which device operates. Possible sources of changes in range are building construction, interference caused by other radio transmitters etc.

2. Detailed description

Transmitter
(front)Transmitter
(side)

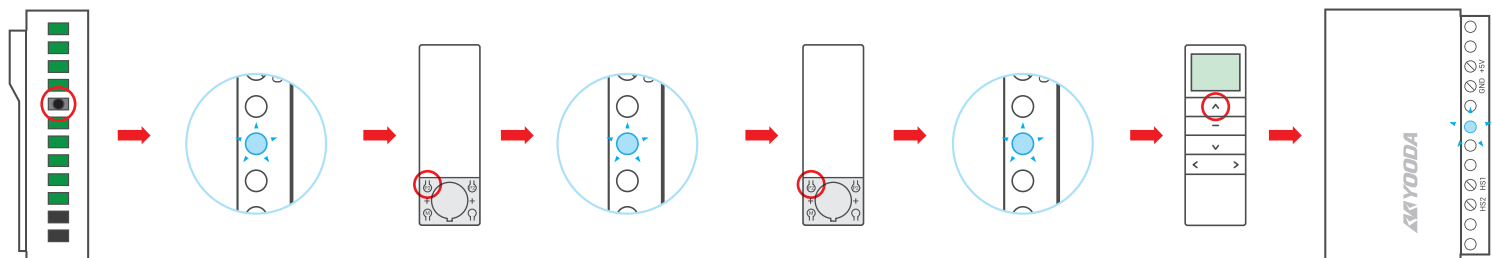
3. Connection



4. Programming the first transmitter



1. Longer than 6 seconds pause between series of button clicks during programming will cause device to switch off from programming mode without saving any changes.
2. After programming the transmitter, the module is in impulse mode.



Turn on the power or when the power is already on, press the programming button.

The LED flashed on the module.

Press programming button P2 on the remote control.

The LED flashed on the module.

Press programming button P2 on the remote control.

The LED flashed on the module.

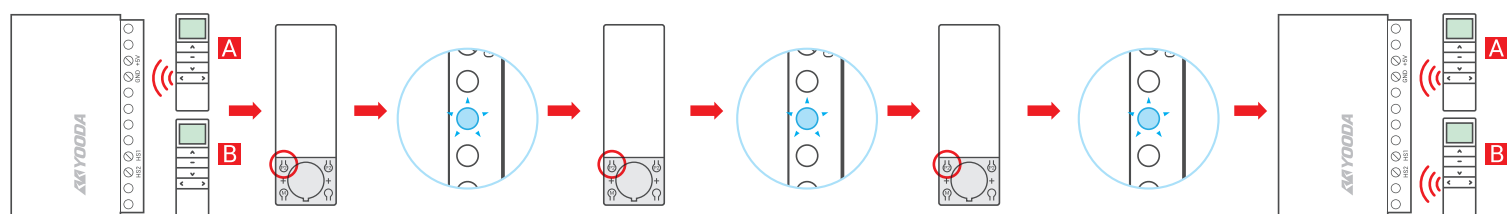
Press UP button on the remote control.

The LED flashed on the module - the transmitter has been programmed.

5. Programming another transmitter



1. The receiver can be controlled by a maximum of 20 transmitters.
2. Longer than 6 seconds pause between series of button clicks during programming will cause device to switch off from programming mode without saving any changes.



Press programming button P2 on the A remote control.

The LED flashed on the module.

Press programming button P2 on the A remote control.

The LED flashed on the module.

Press programming button P2 on the B remote control.

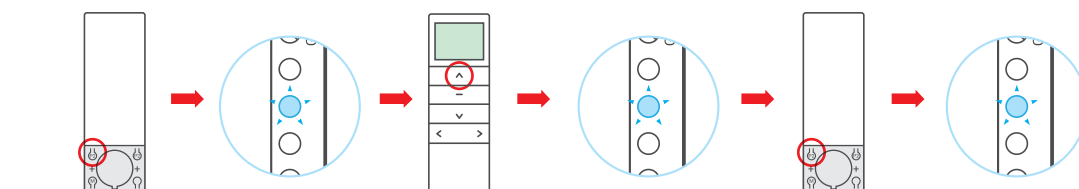
The LED flashed on the module.

The transmitter has been programmed.

6. Impulse mode



1. Longer than 6 seconds pause between series of button clicks during programming will cause device to switch off from programming mode without saving any changes.
2. To enable or disable impulse mode follow the procedure below.



Press programming button P2 on the remote control.

The LED flashed on the module.

Press UP button on the remote control.

The LED flashed on the module.

Press programming button P2 on the remote control.

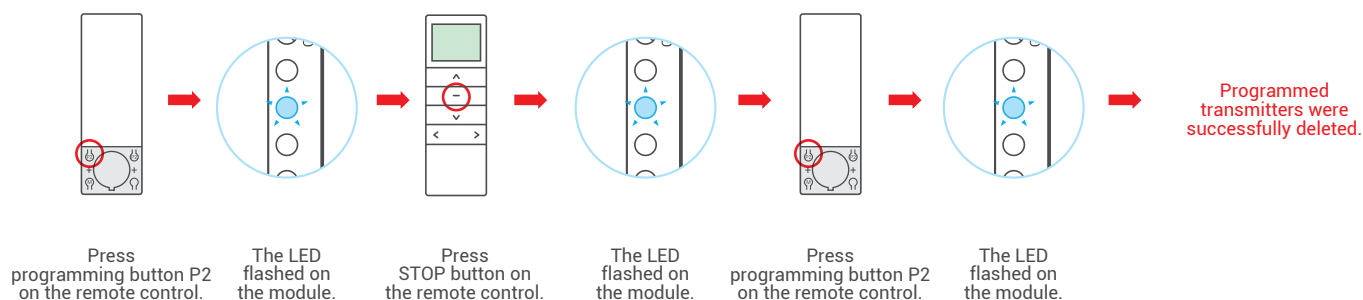
The LED flashed on the module.

The impulse mode has been set.

7. Deleting all transmitters



1. Longer than 6 seconds pause between series of button clicks during programming will cause device to switch off from programming mode without saving any changes.



8. Programming key-ring remotes



1. When programming key-ring remotes that do not have additional P2 programming button the same function is substituted with simultaneous push of STOP and UP buttons.
2. Longer than 4 seconds pause between series of button clicks during programming will cause device to switch off from programming mode without saving any changes.
3. After programming the transmitter, the module is in impulse mode.

