

433 MHz



In order to fully explore available functions of NEMO series please take a moment and read this manual before using the device.
NEMO transmitters are compatible with all YOODA brand devices.

1. General information



1. Control:
can control single motor, or a group
of up to 20 motors on each channel

2. Range:
200 meters outdoor,
35 meters indoor

3. Battery:
1 x CR2430

4. Power supply:
3 V

5. Dimensions:
130 x 45 x 12 mm

6. Transmitting power:
10 mW

7. Operating temperature:
from 0°C to 50°C

8. Protection degree:
IP 30

Illustrations (from the top):

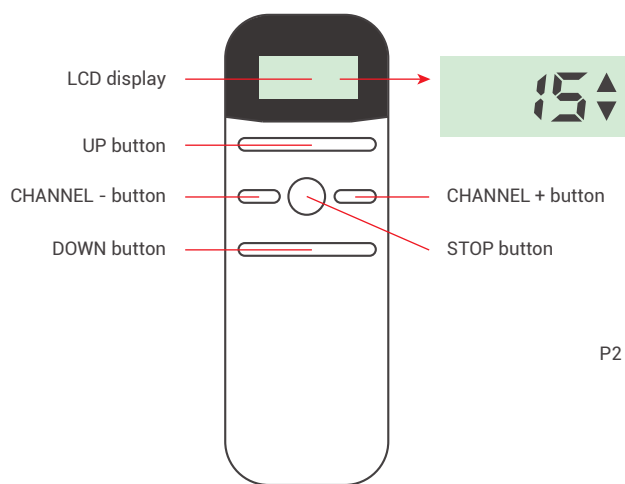
1. Single-channel NEMO remote control, white (NEMO_1R)

2. 15-channel NEMO remote control with display, white (NEMO_15R)

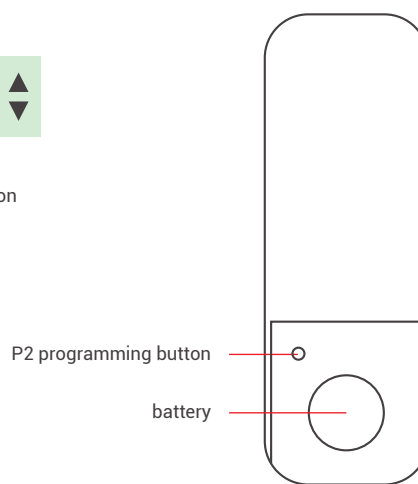


Radio receiver range is a variable value and can differ from declared values depending on conditions in which device operates. Possible sources of changes in range are building construction, interference caused by other radio transmitters etc.

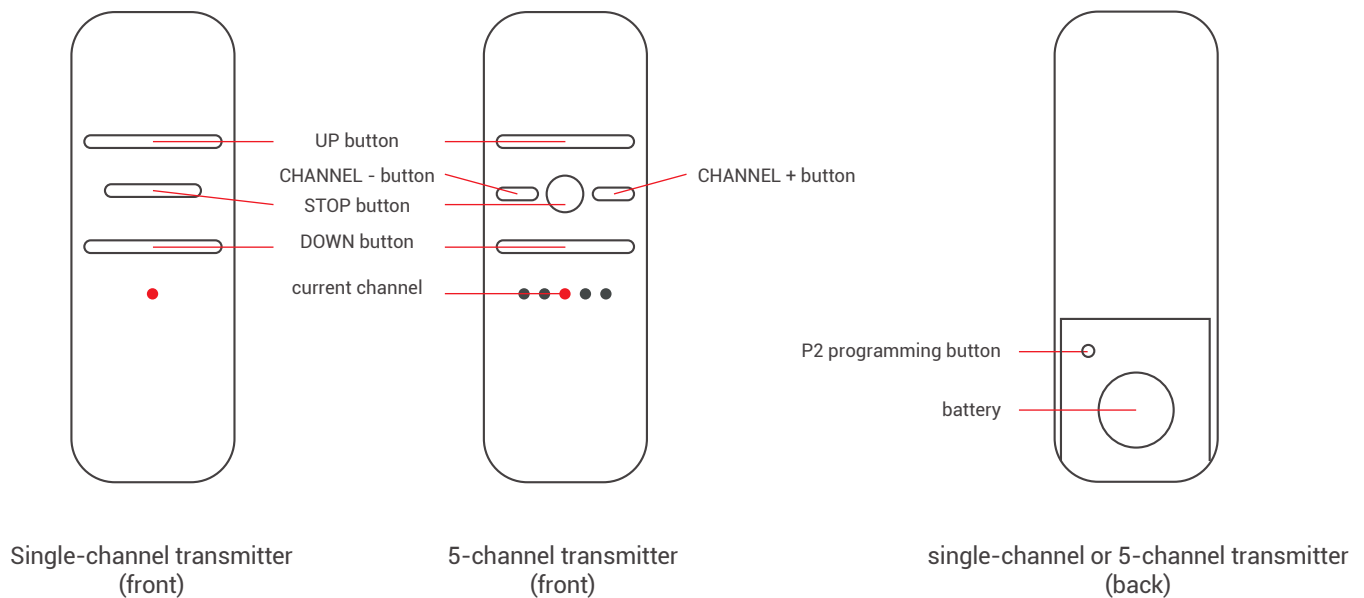
2. Detailed description



15-channel transmitter
(front)



15-channel transmitter
(back)



Single-channel transmitter
(front)

5-channel transmitter
(front)

single-channel or 5-channel transmitter
(back)



1. Estimated battery lifespan is 3 years if the device runs 4 commands a day in average.
2. Batteries should be changed when LED diode stops flashing or receiving device stops reacting to commands.

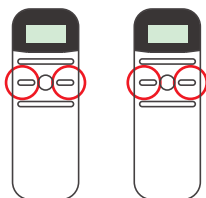


3. When replacing the battery, pay attention to the correct polarity
Batteries contain substances that may be hazardous to health and may pollute the environment. Used batteries should be disposed of properly.

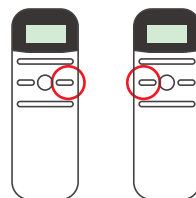
3. Active channel selection



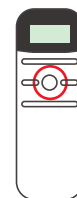
Pressing UP or DOWN button exits active channel selection mode.
Repeat the following procedure to set the number of active channels.



Press simultaneously and hold down the CHANNEL + and CHANNEL - buttons. "C" symbol appears on the display and then after 4 seconds it changes to number 15 with up and down arrows.



Use the CHANNEL + or CHANNEL - buttons to set the number of displayed channels.



Press the STOP key to confirm your choice.
The symbol "o" should appear.

4. Programming first transmitter to R-type motors



1. Way of programming first transmitter depends on type of radio receiver. When programming first transmitter please follow instruction of the device that is going to be controlled by the transmitter.
2. Longer than 5 seconds pause between series of button clicks during programming will cause device to switch off from programming mode without saving any changes.
3. Programming transmitter using this method will result in deleting receiver memory.
4. Choosing '0' group channel means remote controls all programmed devices on all channels at the same time. No programming functions can be performed on group channel. All devices programmed to any other channel can be controlled on group channel without additional programming.

