



Non-compliance with the specification might cause risk for life or health and can determine proper work of the curtains. We strongly recommend to comply with the specification.

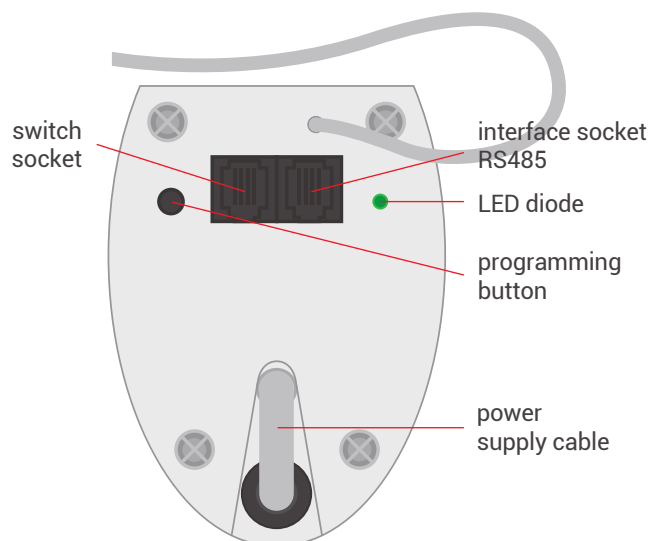


The DT72TE/S series are motors with two-way communication **YOODA** Smart Home system.

1. General information



Motor for curtains DT72TE/S



The motors of the DT72TE/S series are motors with two-way communication and with radio receiver, which together with the curtain rod are designed to automate curtains and enable wireless control using a remote control. They have electronic limit switches that are set automatically. The DT72TE/S series motors are compatible with all YOODA Smart Home System transmitters.

Radio receiver memory:
up to 10 transmitters

Power supply:
230 V / 50 Hz

Operating temperature:
from 0°C to 50°C

Protection degree:
IP 20

Load:
up to 50 kg

Maximum continuous work time:
4 min.



PROGRAMMING BUTTON FUNCTIONS:

1. Pressing the programming button briefly for approximately 1 second controls the drive step by step.
2. Pressing the programming button for 2 seconds enters the motor into the transmitter programming mode.
3. Pressing the programming button for 6 seconds activates the function of blocking the radio signal. To deactivate the function, briefly press the programming button on the motor head or disconnect motor power.
4. Pressing the programming button for 10 seconds changes work motor direction or switch configuration
5. Pressing the programming button for 14 seconds deletes the motor memory and restores the factory settings.

2. Safety measures

Before installing or using motor please read the following instruction. The installer must comply with the standards and regulations in force in the country where the appliance will be installed and provide information to users about the conditions and maintenance of the device. Failure to follow these instructions can present risk to life and health, or invalid functioning of the roller shutter. This also results in the loss of warranty rights.



Motors torque parameter should be adequate to the weight of the curtain.



Switch off the power supply before any installation or maintenance operation.



Motor cables should be fixed in such a way that they have not been damaged by working curtain.



All contact of the motor with any liquids should be reduced to minimum.



Electrical system control should be performed regularly to detect any signs of use or damage of the motor.

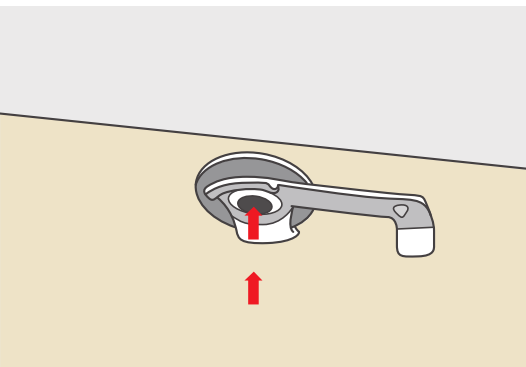


Motor and its control system should be kept out of reach of children.

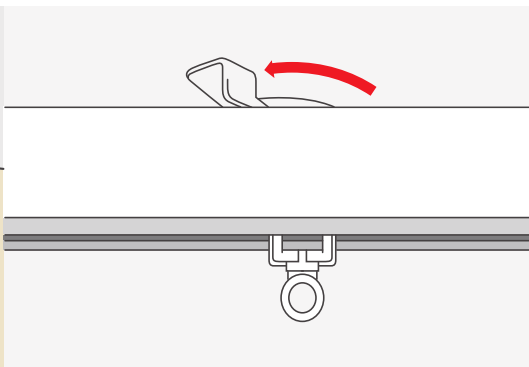


The switch should be mounted at a height of not less than 140 cm, and at such a distance from the curtain to be able to observe its operation during use.

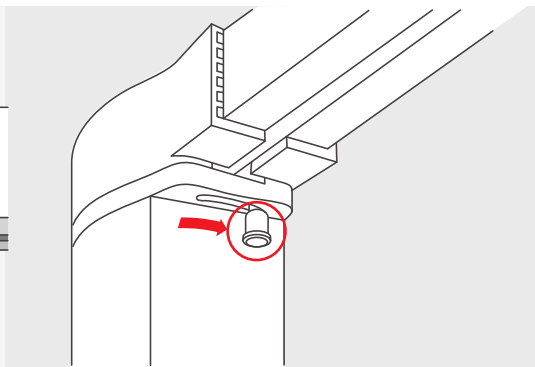
3. Installation



1. We mount the handles. Two handles per meter of curtain track, and one for each following meter of curtain track.

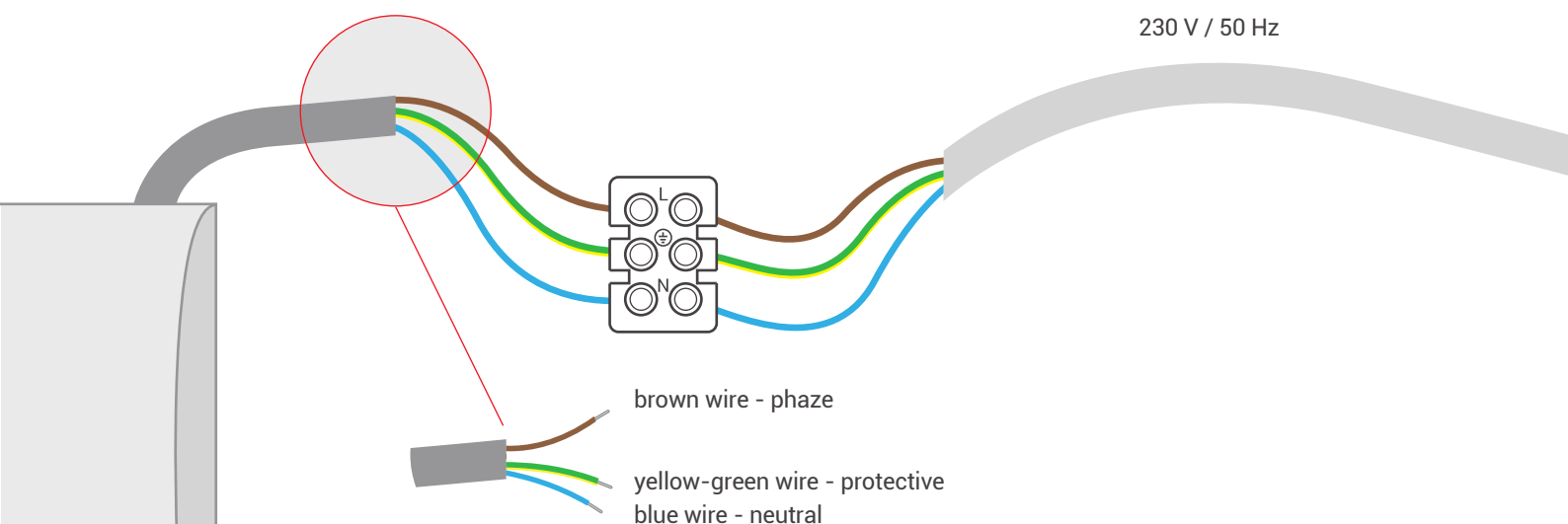


2. Place the curtain track on the handles.



3. Mount the motor in the holder, then move the protection until it snaps into the motor.

4. Connecting

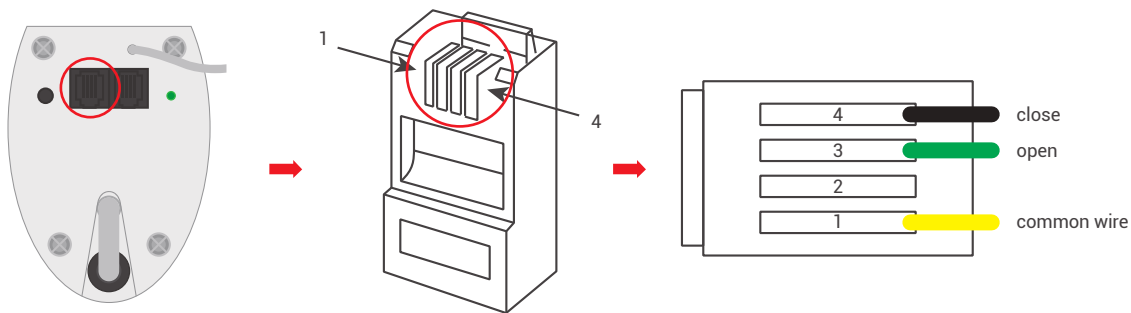


Installation of the tubular motor should be performed by specialists with 1kV or higher SEP-certified electrician's licence (SEP - Association of Polish Electrical Engineers) or equal license. Device is designed to operate in places shielded from unfavourable weather conditions. Motor should be installed in accordance with all provisions of regional law and professional standards. All cables connecting power receiver with electric source should be protected from overload and short-circuits effects with devices automatically disconnecting power. Device should be powered with a separate source and protected only with a fast-blow fuse (never slow-blow fuse). Creating electrical system using inadequate fuse may result in losing rights under the provisions of warranty. When connecting device to power source with cables with adequate cross-section should be used. Long-lasting output load capacity table should be the ground for choosing adequate cables.

5. Connecting and configuring the switch



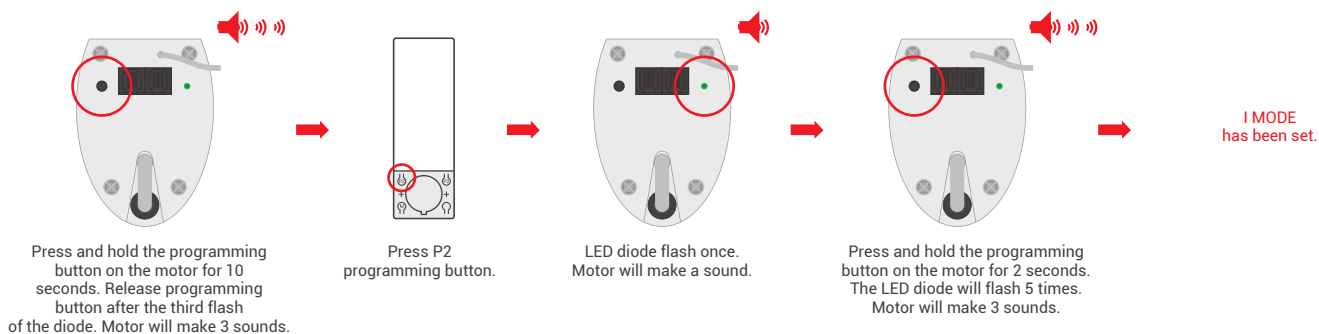
1. Connect the switch to the socket using the RJ-9 plug. For mounting the RJ plug, use the right tools for it.



2. The motor can work in one of four switch modes:

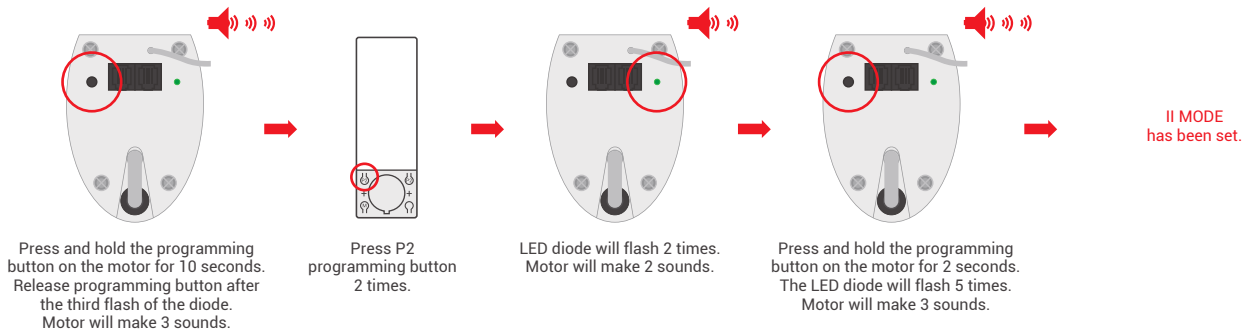
I MODE - ASTABLE SWITCH FOR BLINDS:

- a) A short circuit between wires 1 and 3 causes open or close the curtain.
- b) A short circuit between wires 1 and 4 closes or stops the curtain.



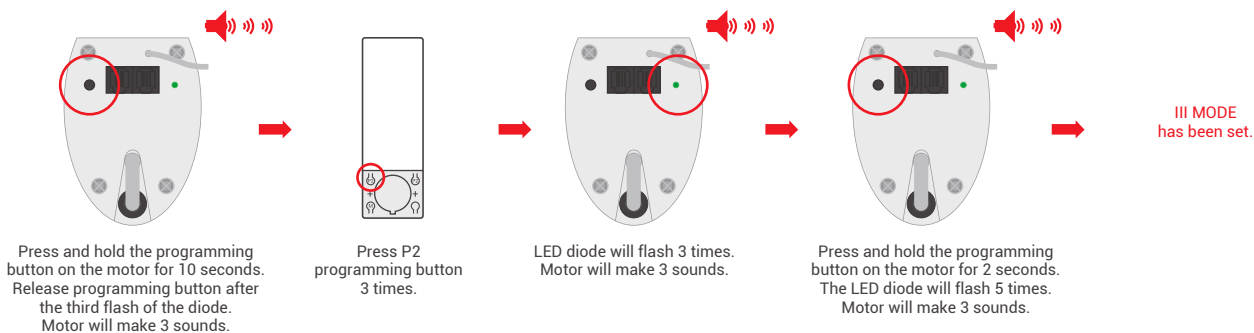
II MODE - STABLE SWITCH FOR BLINDS:

- a) A circuit between wires 1 and 3 causes open the curtain.
- b) A circuit between wires 1 and 4 closes the curtain.



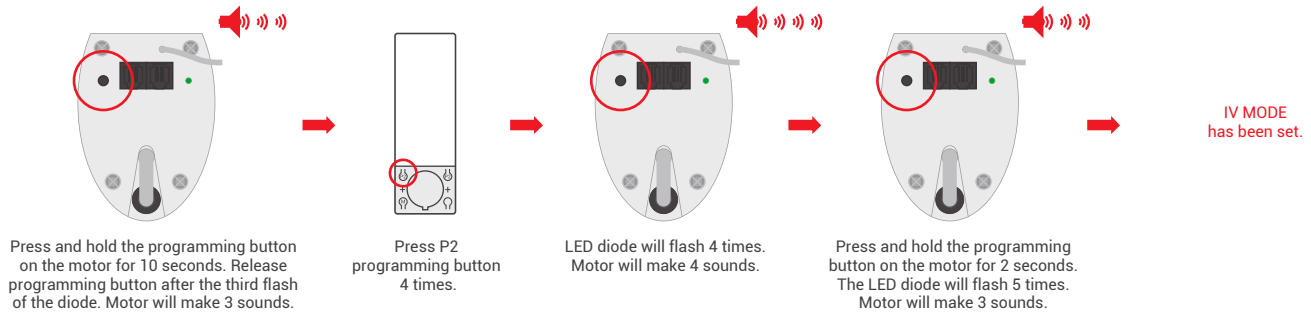
III MODE - ASTABLE SWITCH:

- a) A short circuit between wires 1 and 3 causes open the curtain.
- b) A short circuit between wires 1 and 4 closes the curtain.
- c) A short circuit between wires 1,3 and 4 stops the curtain.



IV MODE - IMPULSE SWITCH

a) A short circuit between wires 1 and 3 causes to move the curtain in step-by-step mode.



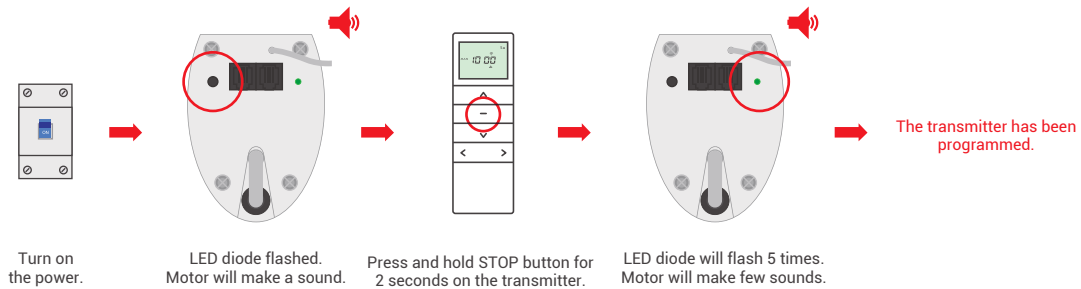
6. Programming first transmitter



1. Longer than 10 seconds pause between series of button clicks during programming will cause device to switch off from programming mode without saving any changes.

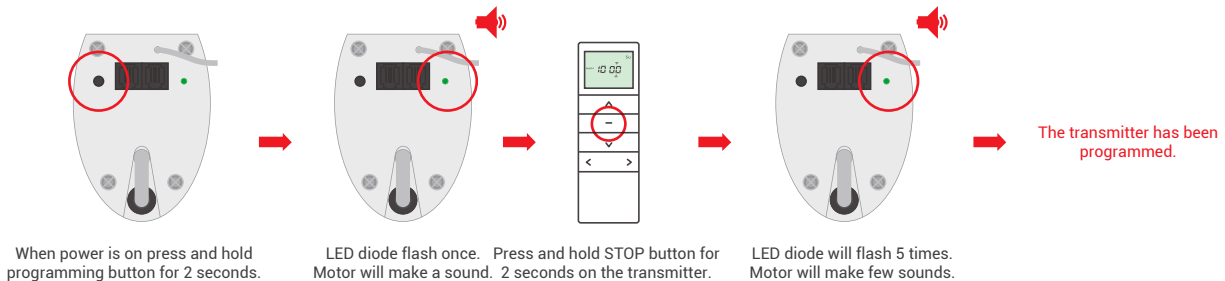
METHOD 1:

Programming the first transmitter by this method it is possible, when none of the transmitters has been programmed.



METHOD 2:

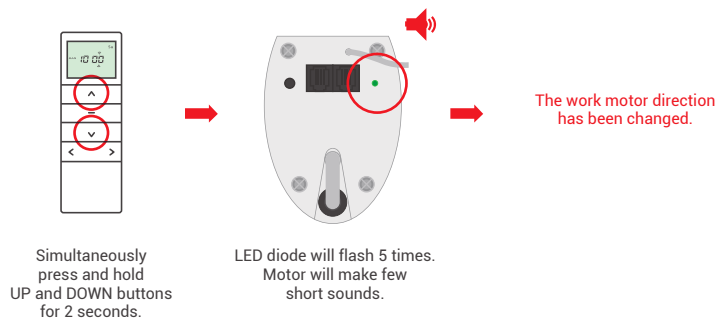
If the limit positions have not been set, programming the first transmitter removes the previously programmed transmitters from memory.



7. Changing motors direction

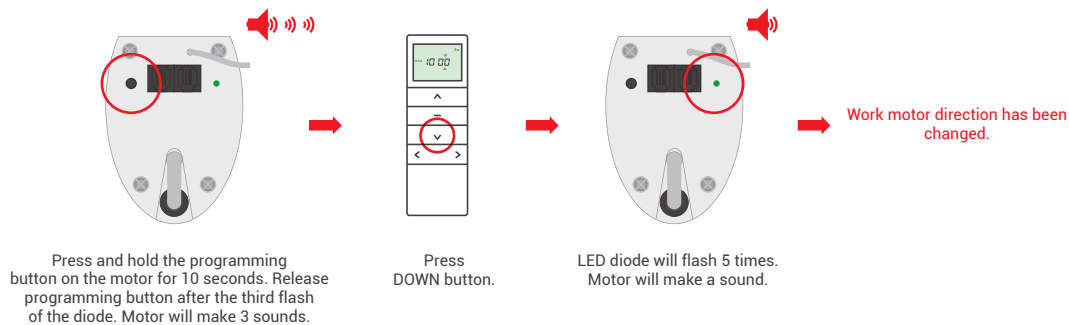
METHOD 1:

Changing the work motor direction using this method is only possible before the limit positions are programmed.



METHOD 2:

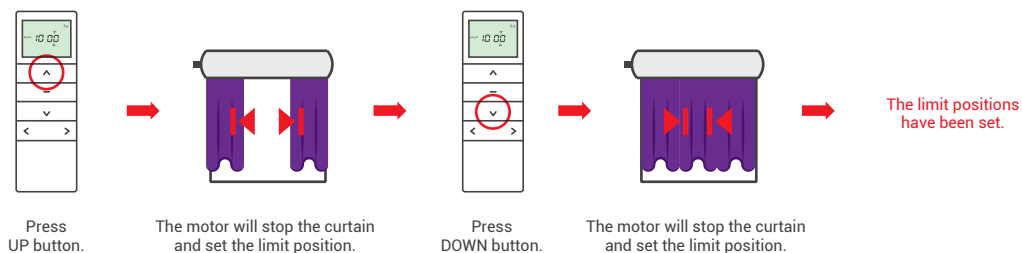
Changing the direction of work motor with this method delete the limit positions.



8. Programming limit positions



1. The limit positions are set automatically after the first cycle.

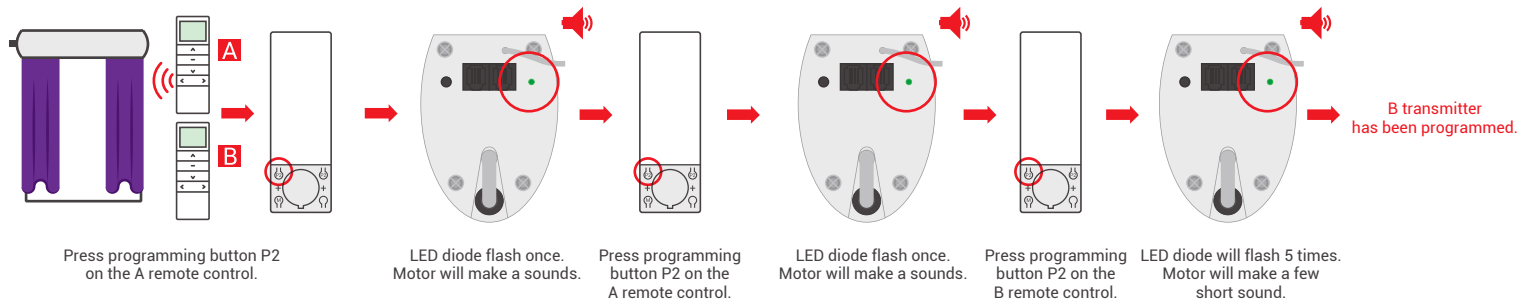


9. Programming another transmitter

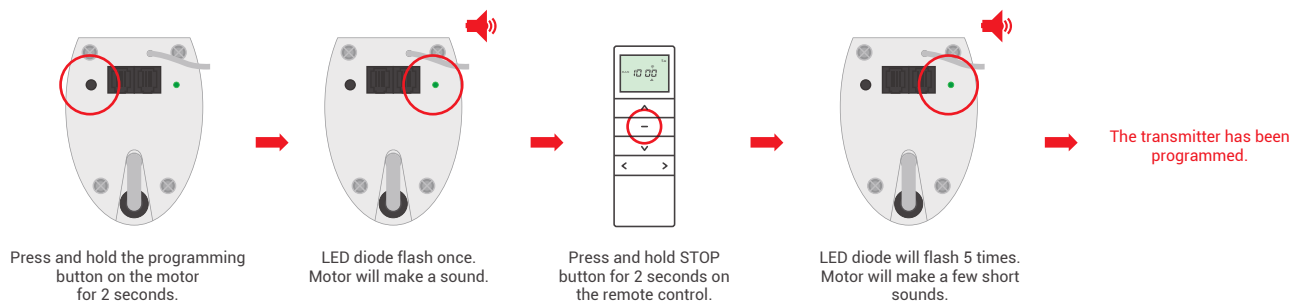


Adding another transmitter is possible after programming the limit positions.

METHOD 1:

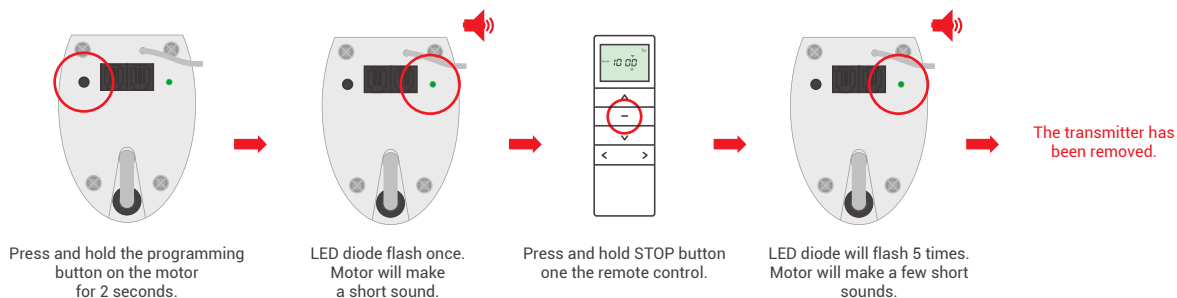


METHOD 2:

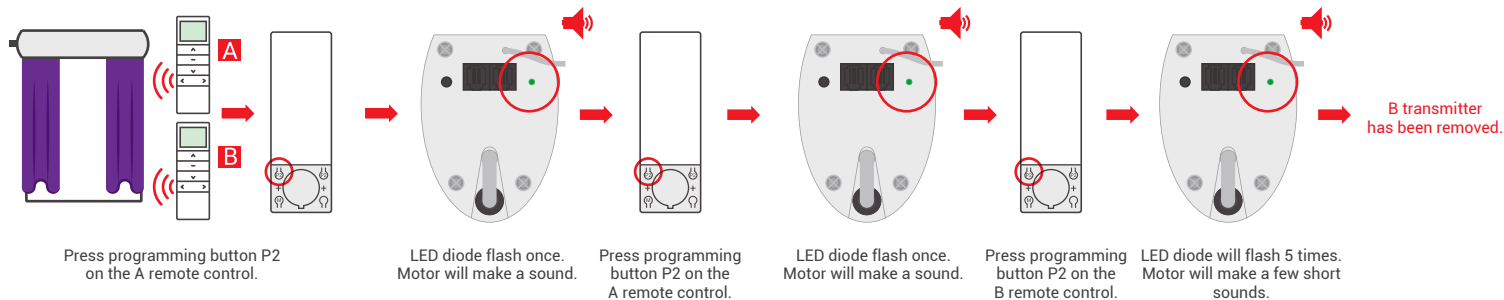


10. Removing of the transmitter

METHOD 1:



METHOD 2:

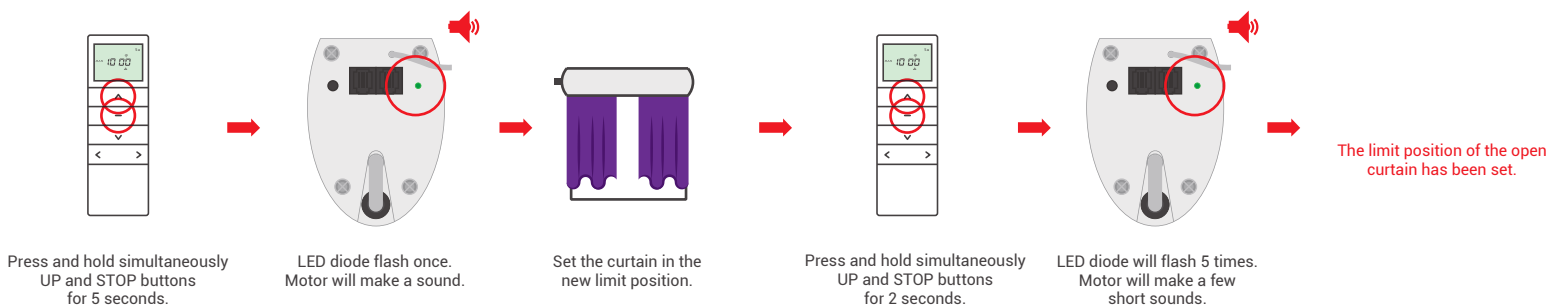


11. Regulation limit positions

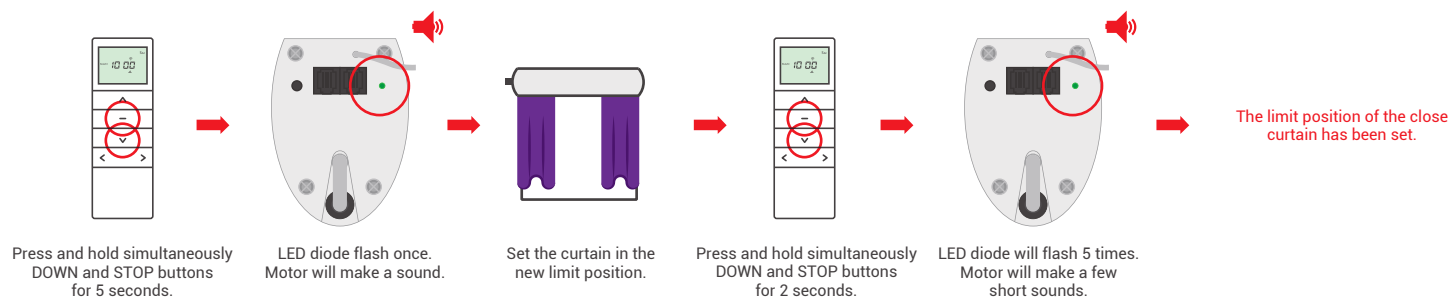


1. After automatic setting of the limit positions, it is possible to adjust them manually.
2. The limit positions set manually must not be outside the range of the limit positions set automatically.

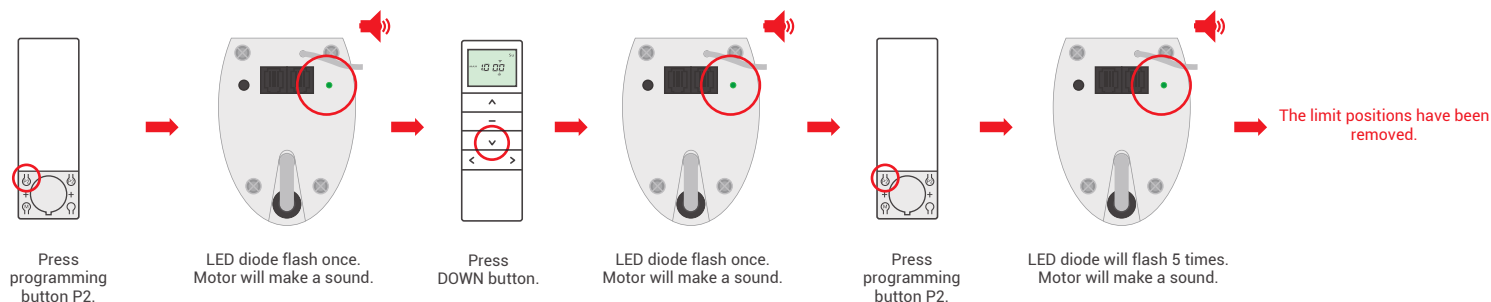
LIMIT POSITION OF THE OPEN CURTAIN:



LIMIT POSITION OF THE CLOSE CURTAIN:



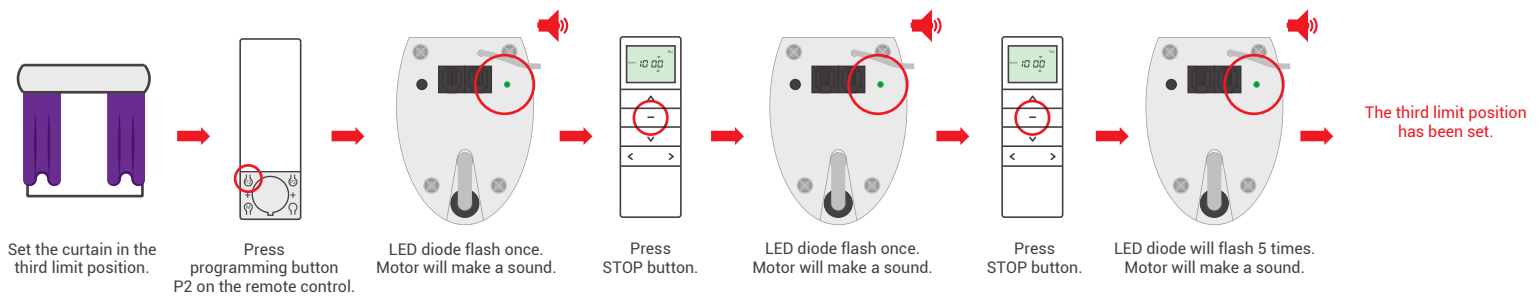
12. Removing limit positions



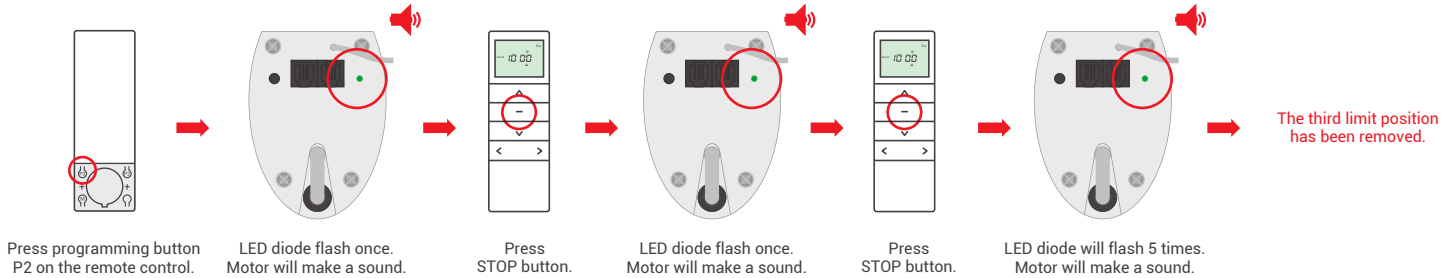
13. Programming the third limit position



1. After setting the limit positions, it is possible to set the third position (favorite) between those positions.
2. To program a new third limit position, the previously programmed position must be deleted.
3. After performing the following procedure, holding down the STOP button for 3 seconds causes the curtain to be positioned in the third limit position.



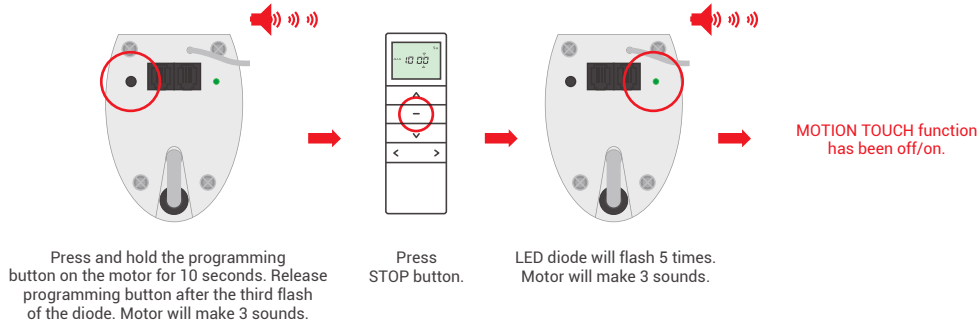
14. Removing the third limit position



15. On/Off MOTION TOUCH function.



1. This function is enabled at the factory.
2. The MOTION TOUCH function automatically starts the motor when the curtain is pulled.
3. Follow the procedure below to on / off the function.

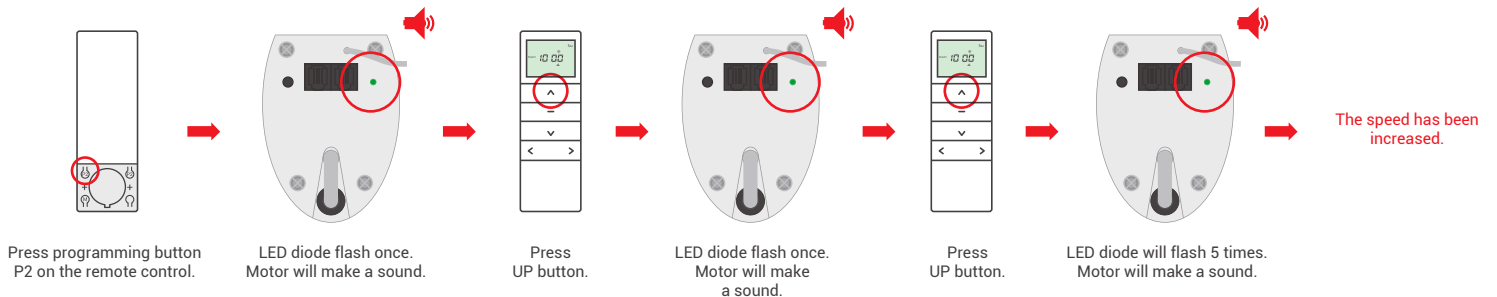


16. Motor speed regulation

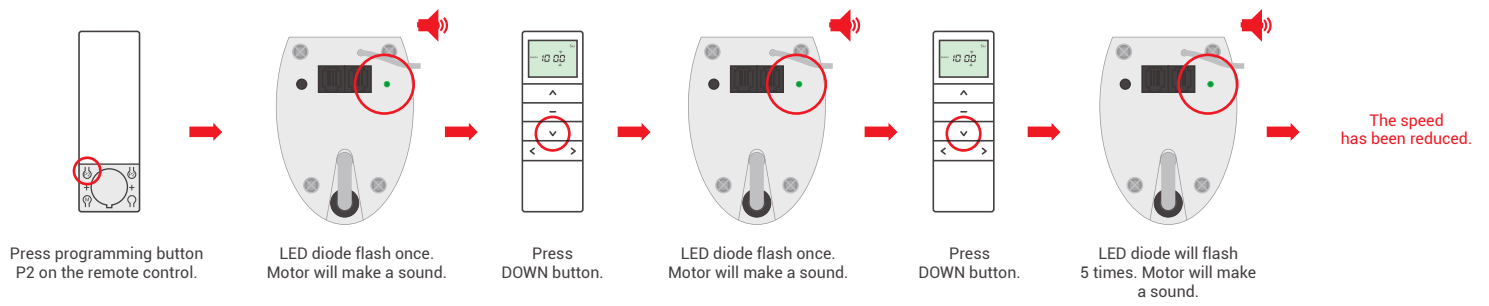


1. If the motor will make two sounds after the procedure, it means that it has the highest or lowest speed.
2. Before programming the limit positions, the lowest drive speed is set by default. After programming the limit positions, the highest drive speed is set by default.
3. The motor has 3 speeds: 60 rpm, 90 rpm, 120 rpm.

INCREASE SPEED OF THE MOTOR:



MOTOR SPEED REDUCTION:



17. Restore factory settings

