

433 MHz



In order to fully explore available functions of Solar Panel please take a moment and read this manual before using the device.  
Solar panels are compatible with all YOODA brand devices.

## 1. General information



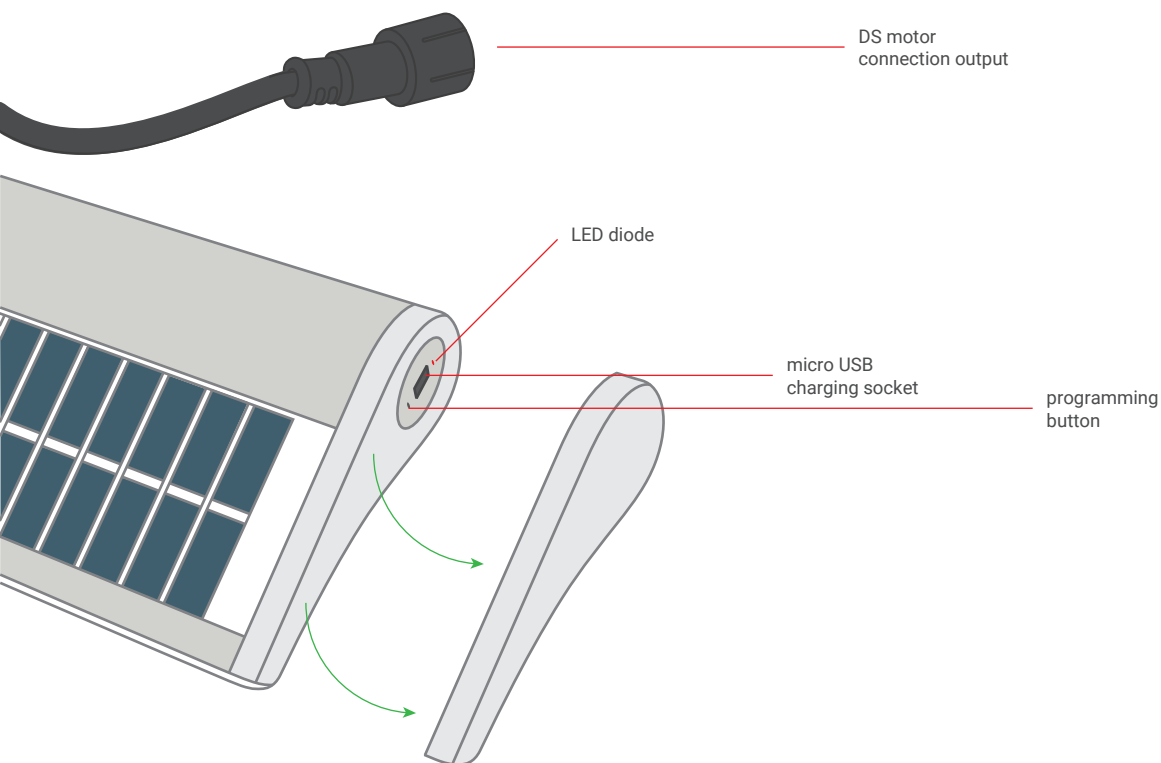
3 W solar panel

1. Control:  
can control a single motor
2. Range:  
100 meters outdoor,  
30 meters indoor
3. Radio receiver:  
built-in solar panel
4. Memory:  
up to 20 transmitters
5. Battery:  
charged with a solar panel or a 5 V micro USB charger
  - a) 3 W solar panel :  
3 Ah, 12 V
  - b) 5 W solar panel:  
5.1 Ah, 12 V
6. Dimensions:
  - a) 3 W solar panel:  
420 x 95 x 35 mm
  - b) 5 W solar panel:  
580 x 95 x 35 mm
7. Output voltage:  
9,5 V - 12,6 V
8. Operating temperature:  
from -15°C to 50°C
9. Current output:  
12A
10. Compatible motors:
  - a) 3 W solar panel :  
12 V to 20 Nm
  - b) 5 W solar panel :  
12 V to 50 Nm
11. Protection degree:  
IP 55



Radio receiver range is a variable value and can differ from declared values depending on conditions in which device operates. Possible sources of changes in range are building construction, interference caused by other radio transmitters etc.

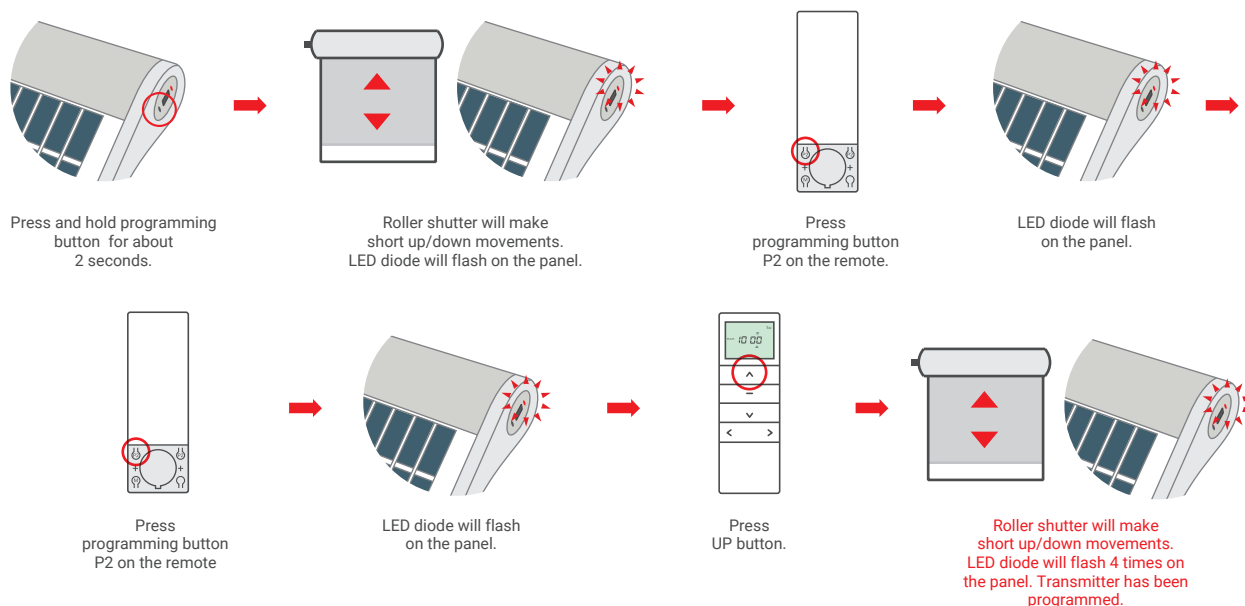
## 2. Detailed description



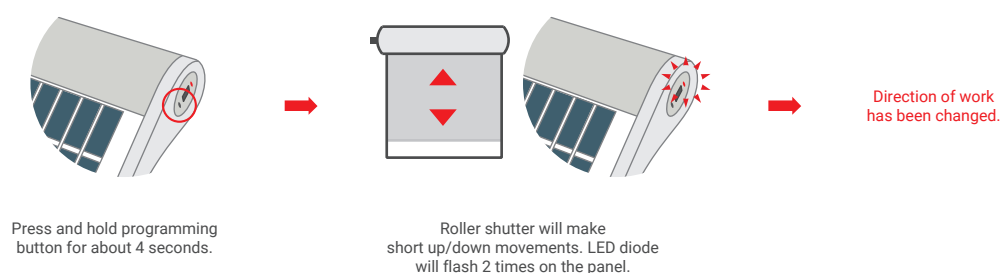
## 3. Programming first transmitter



1. Longer than 10 seconds pause between series of button clicks during programming will cause device to switch off from programming mode without saving any changes.
2. Programming the first transmitter removes the previously programmed transmitters from memory.



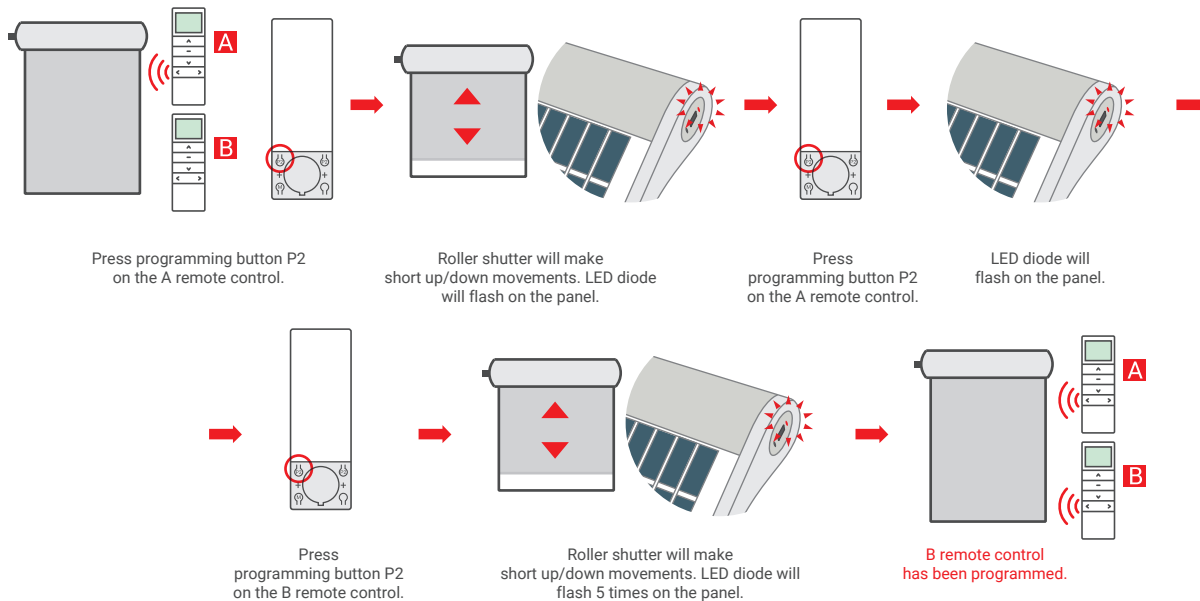
## 4. Changing work direction



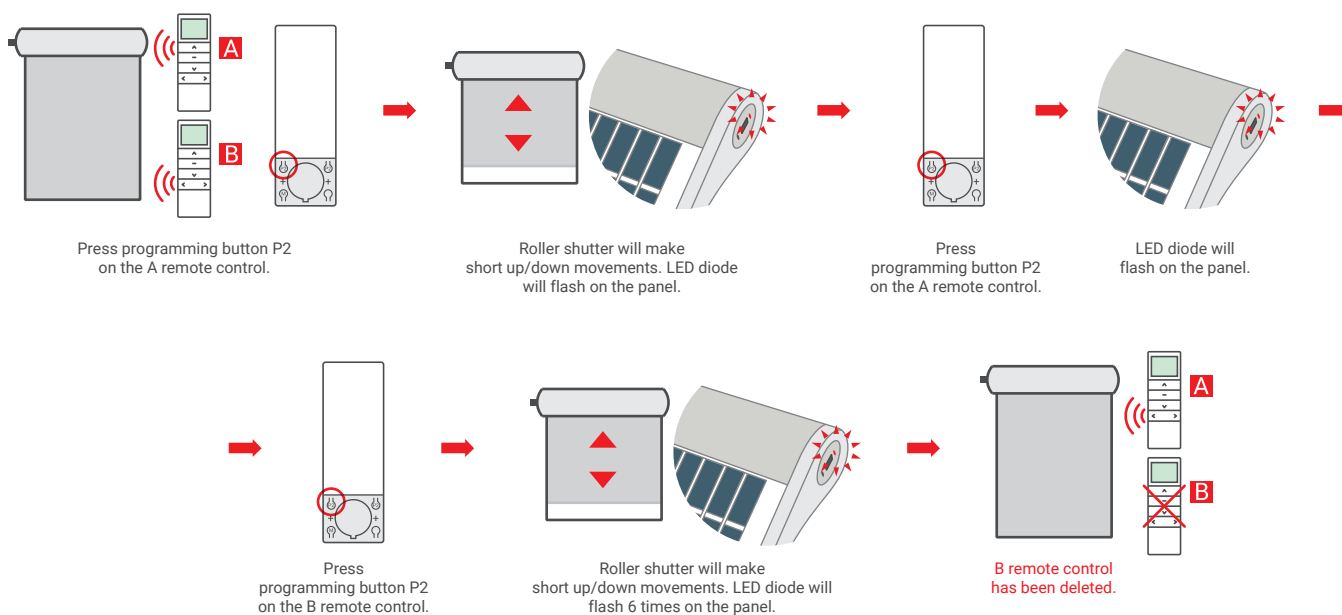
## 5. Programming another transmitter



1. Receiver can be controlled by up to 20 transmitters.
2. Longer than 6 seconds pause between series of button clicks during programming will cause device to switch off from programming mode without saving any changes.



## 6. Deleting another transmitter



## 7. Restore factory settings



Restoring the factory settings removes all programmed transmitters from memory.

