



Work on 230 V mains voltage may only be carried out by persons who have the appropriate permissions. All actions can only be carried out with the power off.

1. General information



Rated voltage:
250 V

Rated current:
max. 10 A

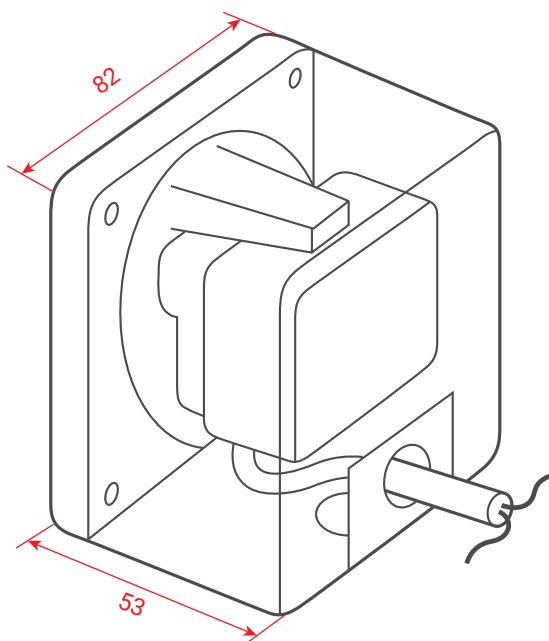
Clamps:
max. 2,5 mm²

Operating temperature:
from -30°C to 50°C

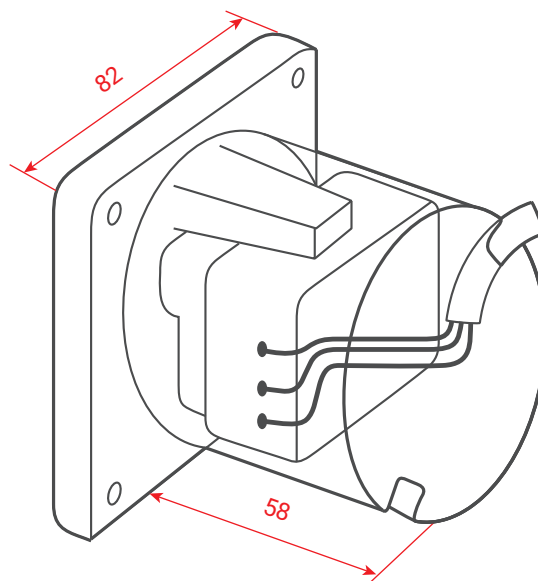
Protection degree:
IP54



Illustrations from the top:
1. Universal flush-mounted key-switch
2. Impulse wall-mounted key-switch

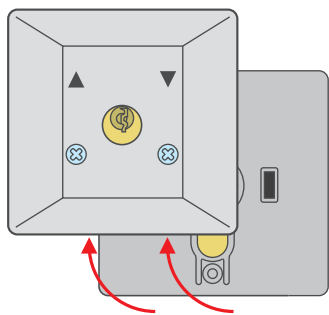


Wall-mounted
key-switch

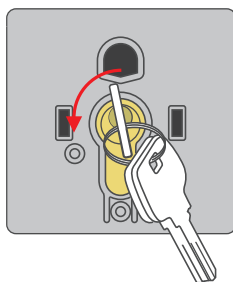


Flush-mounted
key-switch

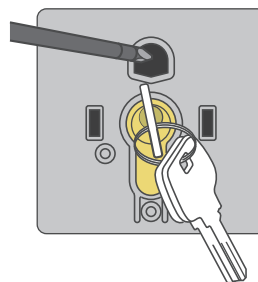
2. Assembly



To open the switch, unscrew the cover.



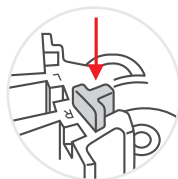
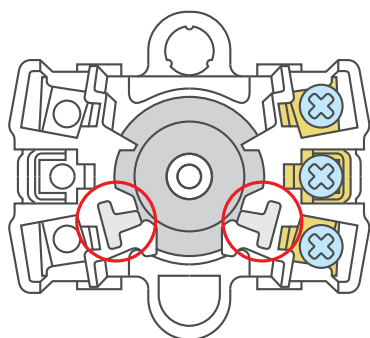
To unlock the latch, insert the key into the lock and turn it to the left.



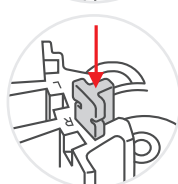
Unscrew the security screw under the latch with a screwdriver.



The switch has the ability to choose stable or astable working mode.



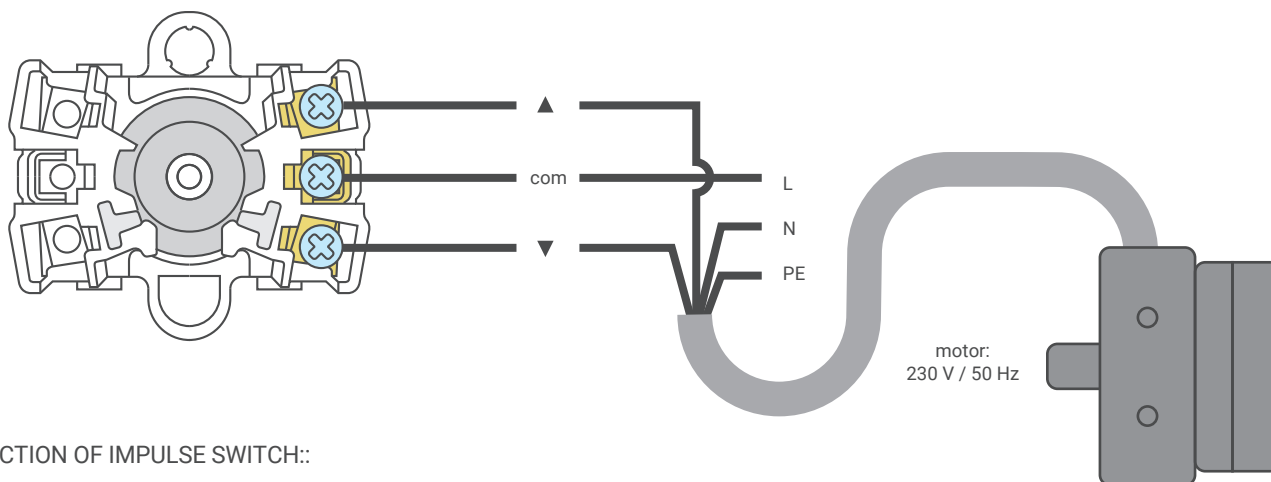
If the blocking element is fully depressed - the astable working mode is set.



If the blocking element is pressed halfway - the stable working mode is set.

3. Connection scheme

CONNECTION OF TUBULAR MOTOR TO SWITCH:



B) CONNECTION OF IMPULSE SWITCH::

