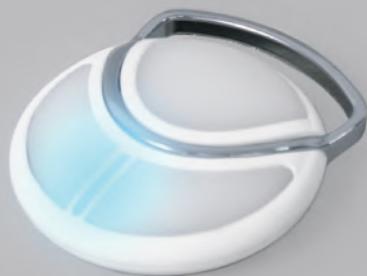




In order to fully explore available functions of TP03 series please take a moment and read this manual before using the device.  
TP03 transmitters are compatible with all TENPILOT brand devices.

## 1. General information



Power supply:  
3 V

Battery:  
CR2032

Work current:  
max 25 mA

Work frequency:  
433.92 MHz

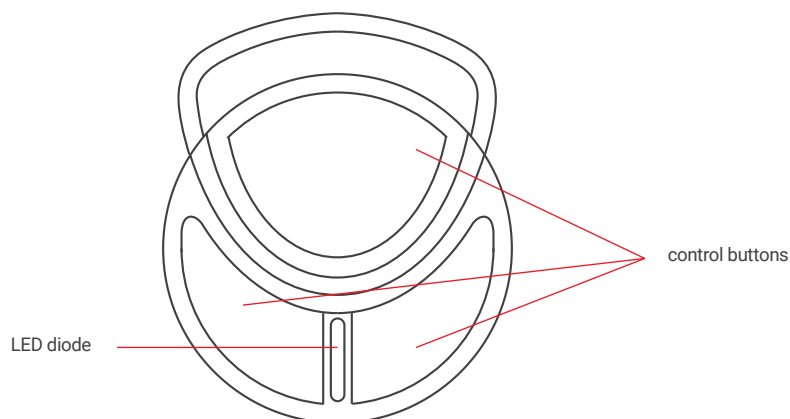
Dimensions:  
38 x 44,5 x 11 mm

Range:  
to 30 m



Radio receiver range is a variable value and can differ from declared values depending on conditions in which device operates. Possible sources of changes in range are building construction, interference caused by other radio transmitters etc.

## 2. Detailed description

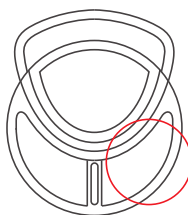


Batteries contain substances that may be hazardous to health and may pollute the environment. Used batteries should be disposed of properly.

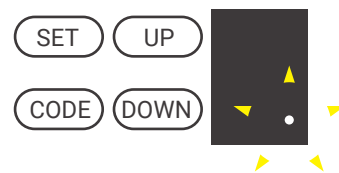
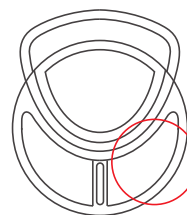
## 3. Programming the remote control for garage door opener



Press CODE button.  
In the bottom corner a dot (.) appears.



Press the button on the transmitter that will control the drive.  
The dot on the display disappears.



Press the same button again.  
The dot on the display will flash several times.  
The remote control has been programmed.