



1. Read the instruction carefully and comply with the installation and safety recommendations. Keep the instruction.
2. Non-compliance with the following safety recommendations can present risk to life and health or damage to property.

1. Power supply:
230 V / 50 Hz

2. LED-lighting:
12 W

3. Power of drive:
133 W

4. Germicidal lamp:
6 W

5. Fan:
10 W

6. Drying temperature:
38°C

7. Maximal load:
38 kg



1. Installation, maintenance and repair must be carried out by qualified people complying with applicable standards and regulations.
2. Persons who install or service the device without complying with all applicable safety standards shall be liable for any damage, injury, costs, expenses or claims of the injured person as a result of improper installation of the system.
3. Before installing the device make sure that strength of the ceiling is suitable.
4. The device is meant for indoor use. It must not be mounted in a place exposed to precipitation.
5. It is prohibited to put hands or items between the extendible bracket, while the device is moving up or down.
6. Make sure that the power supply you will be using is compatible with the product's power supply, before installing the device. Check, if an RCD is installed and if the grounding system works properly.
7. Do not let children play with the controlling devices. The remote controls should be kept away from them.

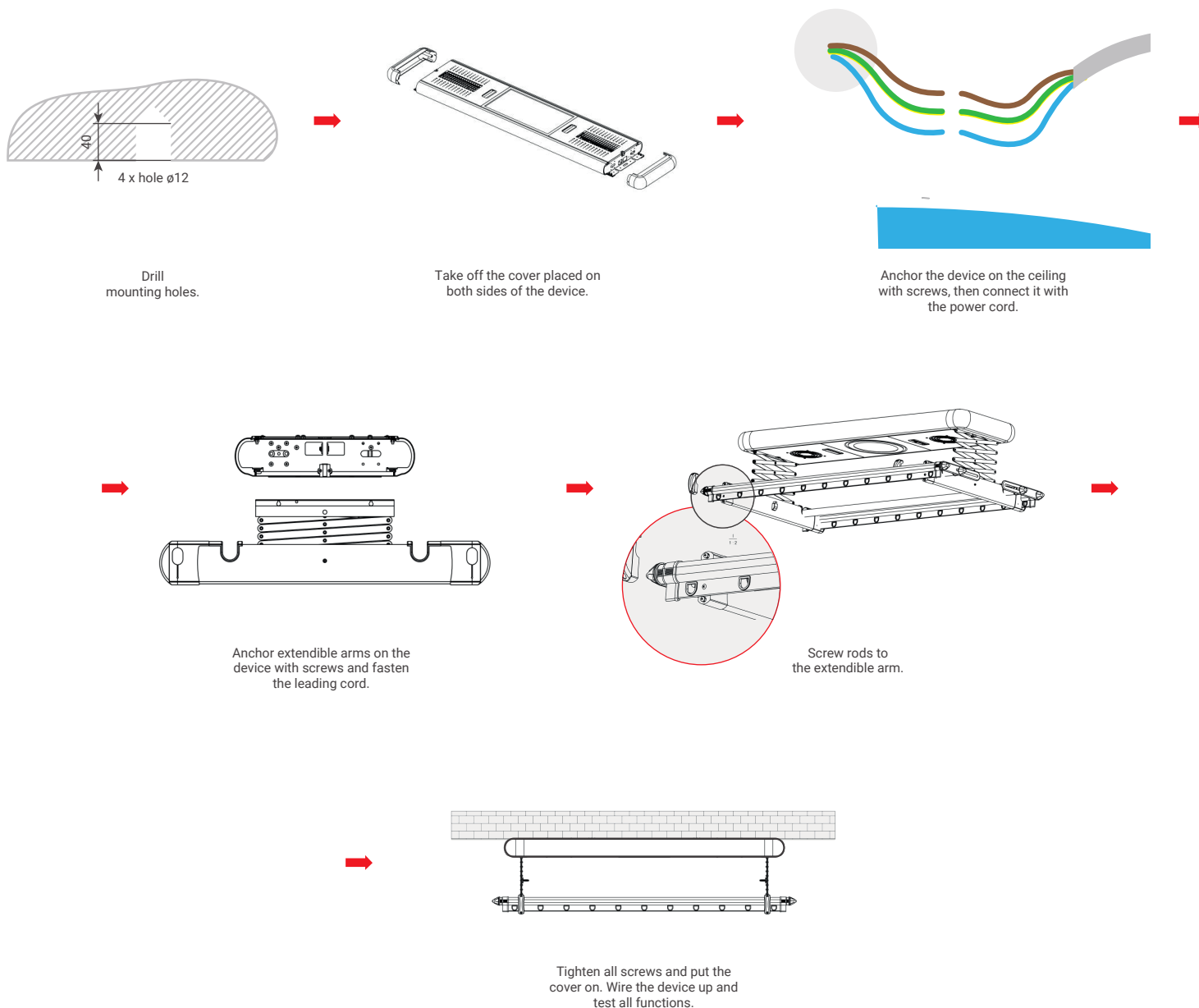
2. Description of the device



FUNCTIONS:

1. Protection from overload. If the load is bigger than 38 kg, the drive will slow down and stop.
2. Obstacle detection function. If the drive detects an obstacle, it will turn off.
3. Disinfection function. The germicidal bulb will turn off after 30 minutes. This function works, when the drying rack is in the upper position.
5. Wireless control. Using the remote control, you can lower or raise the drying rack, turn on or off the drying functions, lighting and the germicidal lamp.

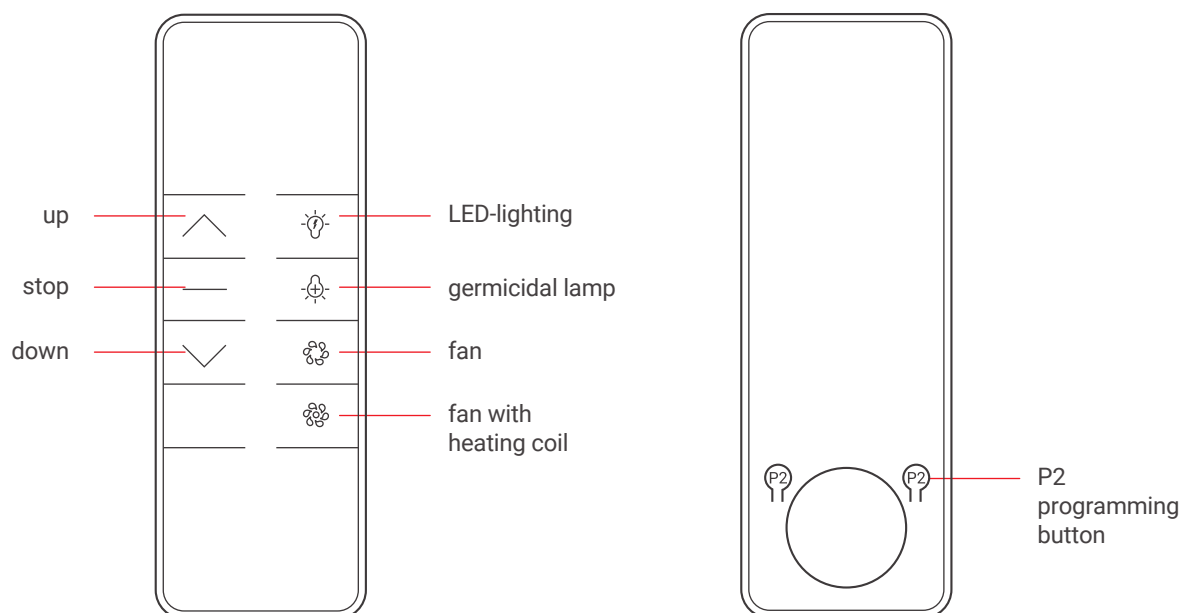
3. Assembly



4. Transmitter programming



To programme a remote control, you need to turn on power supply of the device and press P2 programming button twice, then press UP button.



5. List of components

LP.	NAMES OF COMPONENTS	QUANTITY
1	Drive	1 pc.
2	Extendible arm	2 pcs.
3	Rod	2 pcs.
4	Germicidal lamp	2 pcs.
5	Transmitter	1 pc.
6	M8 screw	2 pcs.
7	M4*12 screw	2 pcs.
8	Instruction	1 pcs.