



To use the technical capability of MAGNETIC PRO YSH transmitters optimally, read the following instructions carefully. MAGNETIC PRO YSH transmitters are compatible with all devices of YOODA SMART HOME system.



MAGNETIC PRO YSH transmitters is control dedicated to bidirectional communication.

1. Technical data



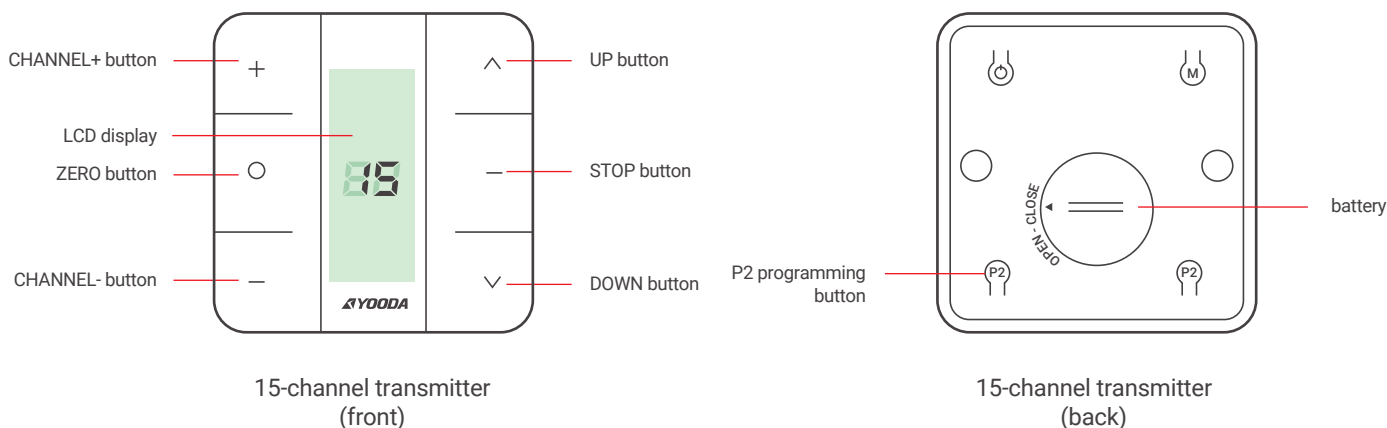
MAGNETIC PRO YSH 15-channel remote control with a display, white (MAGNETIC PRO_15Rw YSH)

1. Control:
possibility to control 1 motor or a group of up to 20 motors on each channel
2. Range:
up to 200 meters in open area,
up to 35 meters indoors
3. Battery:
CR2430
4. Power supply:
3 V
5. Dimensions:
80 x 80 x 15 mm
6. Signal power:
10 mW
7. Operation temperature:
from 0°C up to 50°C
8. Safety degree:
IP 30



The range given by the manufacturer is a variable value, depending on the conditions in the environment in which the device works. Factors such as building structure, signal interference from other devices, etc. affect range.

2. Description of the device



1. Open the battery case to obtain access to the battery.
2. Lifespan of the battery is ca. 1 year while executing approximately 4 commands per day.
3. The batteries need replacing when the receiver stops reacting while you press the buttons.
4. Pay attention to polarisation of the battery while replacing it.
5. After pressing ZERO button, number 0, which indicates a group channel, appears on the display. This channel shows all active devices programmed on individual channels of the transmitter. Do not perform any programming procedures on the group channel.



Batteries contain substances that may present risk to health or serious environment degradation. Used batteries must be disposed of in specially marked containers.

3. Choosing active channels



Pressing UP or DOWN button causes exit from choosing active channels.
To change the amount of active channels again, perform the following procedure:



Press and hold CHANNEL+ and CHANNEL- buttons simultaneously.
Symbol "C" will appear on the display and after ca. 4 seconds also number 15 and up and down arrows.

Set the amount of displayed channels with CHANNEL+ or CHANNEL- buttons.

Confirm the setting with STOP button.
Symbol "o" appears on the display.

4. Blockage of function keys



1. Blockage of function keys prevents accidental pressing of two buttons used while programming motors or radio receivers.
2. This function is disabled due to factory settings. To turn it on/off you need to perform the following procedure.



If symbol "L" appears on the display, the blockage function is on.

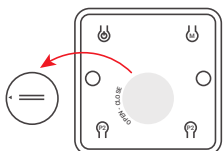
If symbol "U" appears on the display, the blockage function is off.

Press and hold STOP button for 15 seconds.

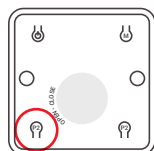
5. Choosing the mode of transmitter operation



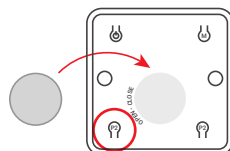
1. Transmitter can operate in one of two modes:
 - a) bidirectional
 - b) unidirectional
2. The transmitter operates in bidirectional mode due to factory settings.



Take the battery out of the transmitter.



Press P2 programming button.



Put the battery in while holding P2 programming button.

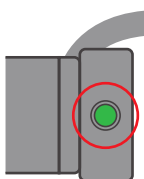
If digit 1 appears on the display, the transmitter operates in unidirectional mode.

If digit 2 appears on the display, the transmitter operates in bidirectional mode.

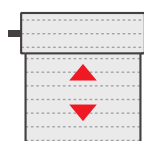
6. Programming the first transmitter for motors of EV/S type



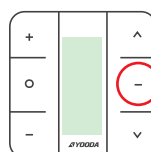
1. Programming of a transmitter depends on the type of receiver. While programming you should abide by the manual of the device, that the transmitter is supposed to control.
2. A break between successive button presses longer than 6 seconds, will automatically cause the exit from programming mode without saving the changes.
3. If limit positions have not been set, programming of the first transmitter will delete transmitters that were programmed earlier.
4. If the channel "0" is set on the display, the group channel is on, which allows to control all of the blinds programmed on the individual channels. Do not perform any programming procedures on this channel. The group channel is created automatically.



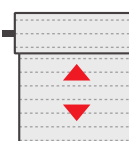
Turn on power supply or press the programming button on the cylinder head (for 2 sec.) if power supply is on.



Motor will make a sound.
Blind will make short up/down moves.



Press and hold STOP button on the remote control for 2 seconds.



Blind will make two short up/down moves. Motor will make a few short sound signals.

Transmitter has been programmed.