

433 MHz



In order to fully explore available functions of ARTISTIC series please take a moment and read this manual before using the device.  
ARTISTIC transmitters are compatible with all YOODA brand devices.

## General information



1. Control:  
can control single motor, or a group of up to 20 motors on each channel

2. Range:  
200 meters outdoor,  
35 meters indoor

3. Battery:  
1 x CR2430

4. Power supply:  
3 V

5. Dimensions:  
130 x 44 x 10 mm

6. Transmitting power:  
10 mW

7. Operating temperature:  
from 0°C to 50°C

8. Protection degree:  
IP 30



Illustrations (from the top):

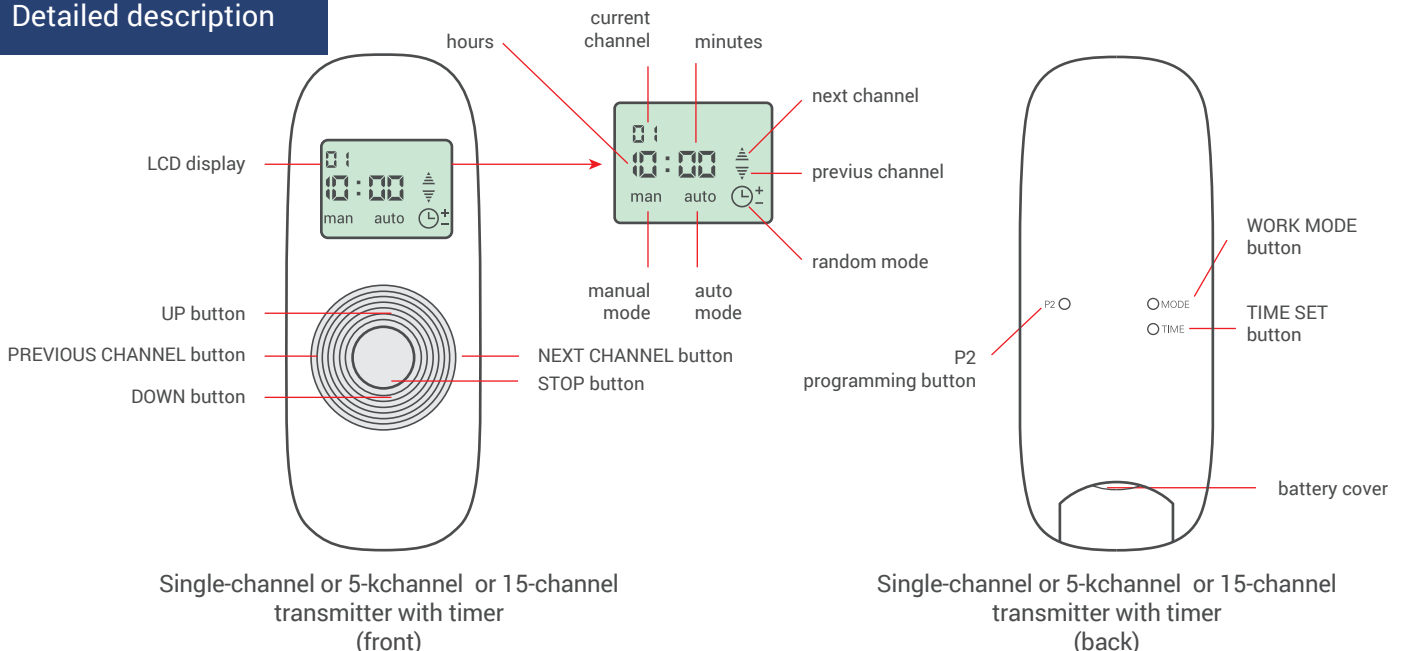
Fig. 1. 15-channel ARTISTIC remote control with display and timer, black (ARTISTIC\_15RT\_B)

Fig. 2. Single-channel ARTISTIC remote control with display and timer, white (ARTISTIC\_1RT)



Radio receiver range is a variable value and can differ from declared values depending on conditions in which device operates. Possible sources of changes in range are building construction, interference caused by other radio transmitters etc.

## Detailed description



433 MHz



In order to fully explore available functions of ARTISTIC series please take a moment and read this manual before using the device. ARTISTIC transmitters are compatible with all YOODA brand devices.

## Detailed description



1. For channel to work correctly when remote is set to automatic mode, it has to be activated. If automatic mode is chosen for the channel and the channel number is flashing, that means device cannot work in automatic mode. For activation press and hold for a few seconds P2 programming button – channel number will stop flashing and from now on roller shutter will work in automatic mode.
2. Difference between automatic time of roller shutter opening and closing cannot be shorter than 32 minutes. In case of smaller than minimal time difference fault message will appear and none of the changes will be saved.
3. Pressing UP or DOWN button in any mode will show currently set opening/closing time and symbol of current process.
4. Estimated battery lifespan is 1 year if the device runs 4 commands a day in average.
5. Batteries should be changed when device stops reacting to commands.
6. When placing the battery ensure that polarity is correct.
7. Choosing '00' group channel means remote controls all programmed devices on all channels at the same time. No programming functions can be performed on group channel. All devices programmed to any other channel can be controlled on group channel without additional programming.
8. For all the programmed devices on every channel to work automatically group channel '00' should be chosen in automatic mode.

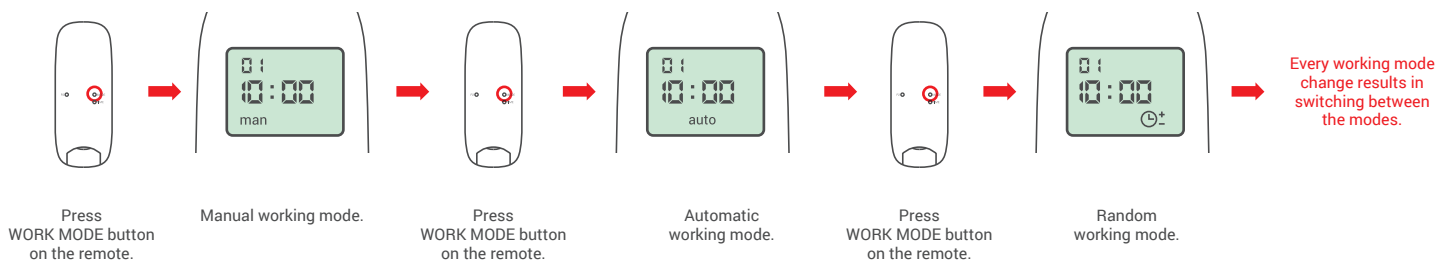


Batteries contain substances that may be hazardous to health and may pollute the environment. Used batteries should be disposed of properly.

## Changing work mode



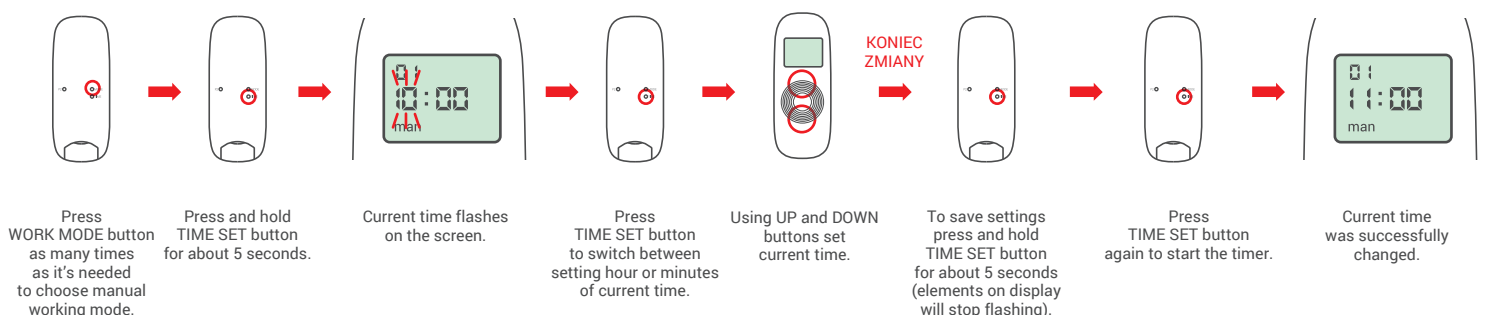
1. **Manual working mode:** normal working mode, without automatic opening/closing according to preset time.
2. **Automatic working mode:** normal working mode with automatic opening/closing according to preset time.
3. **Random working mode:** time controlled work with random opening/closing time (up to 15 minutes difference to preset opening/closing time).
4. Working mode is changed for all channels of the device at the same time.



## Setting current time



1. Time can be set only when device is in manual working mode.
2. Longer than 10 seconds pause between series of button clicks during programming will cause device to switch off from programming mode without saving any changes.



433 MHz

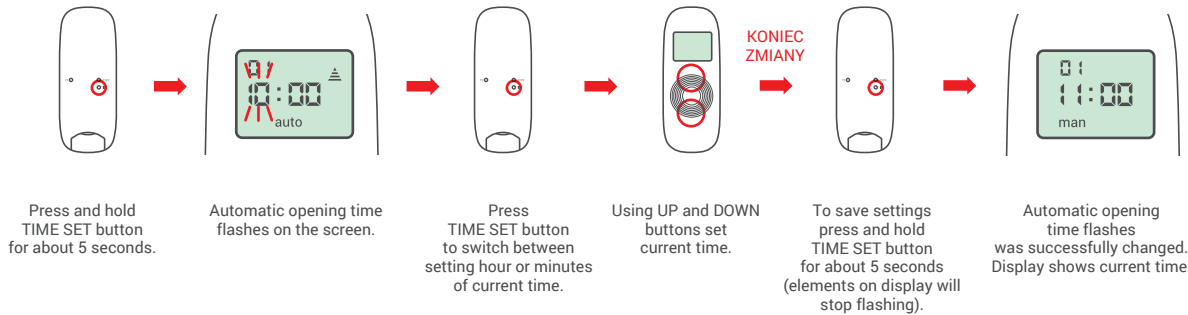


In order to fully explore available functions of ARTISTIC series please take a moment and read this manual before using the device.  
ARTISTIC transmitters are compatible with all YOODA brand devices.

## Changing automatic opening time



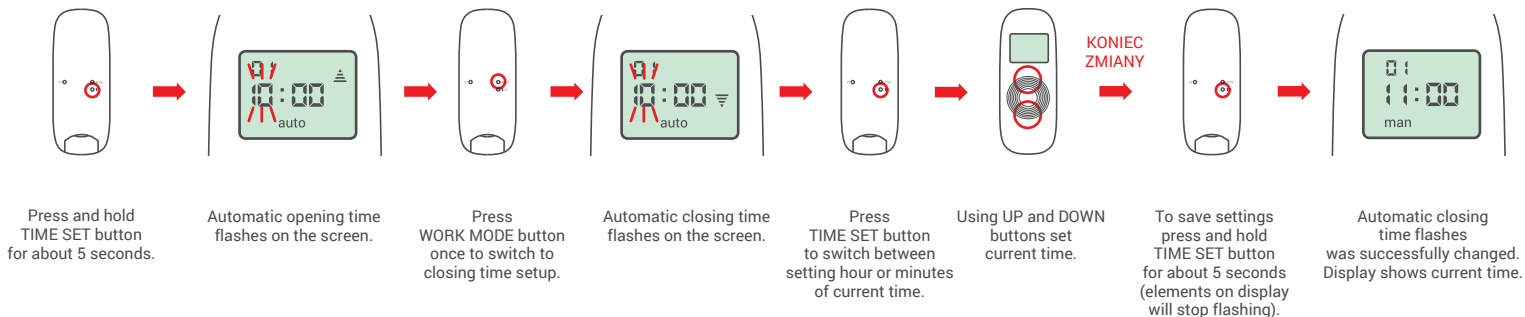
1. Time can be set only when device is in automatic working mode.
2. Longer than 10 seconds pause between series of button clicks during programming will cause device to switch off from programming mode without saving any changes.



## Changing automatic closing time



1. Time can be set only when device is in automatic working mode.
2. Longer than 10 seconds pause between series of button clicks during programming will cause device to switch off from programming mode without saving any changes.



## Programming first transmitter to R-type motors



1. Way of programming first transmitter depends on type of radio receiver. When programming first transmitter please follow instruction of the device that is going to be controlled by the transmitter.
2. Longer than 5 seconds pause between series of button clicks during programming will cause device to switch off from programming mode without saving any changes.
3. Programming first transmitter will result in deleting all previously programmed transmitter.

