

433 MHz



In order to fully explore available functions of CAMELEO series please take a moment and read this manual before using the device. CAMELEO transmitters are compatible with all YOODA brand devices.

## General information



1. Control:  
can control single motor,  
or a group of up to 20 motors on each channel

2. Range:  
200 meters outdoor,  
35 meters indoor

3. Battery:  
2 x CR2032

4. Power supply:  
3 V

5. Dimensions:  
80 x 80 x 14 mm

6. Transmitting power:  
10 mW

7. Operating temperature:  
from 0°C to 50°C

8. Protection degree:  
IP 30

Illustrations (from the top):

Fig. 1. 2-channel CAMELEO wall-mounted remote control, white (CAMELEO\_2Rw)

Fig. 1. Replacable frames for CAMELEO wall-mounted remotes (colours form left: pearl, choco, titan, beige, metallic)

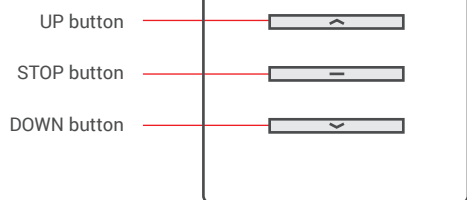


Radio receiver range is a variable value and can differ from declared values depending on conditions in which device operates. Possible sources of changes in range are building construction, interference caused by other radio transmitters etc.

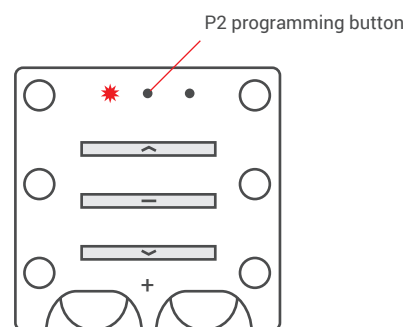
## Detailed description



To access P2 programming button, batteries and mounting holes remove front frame.



Single-channel transmitter  
(front)

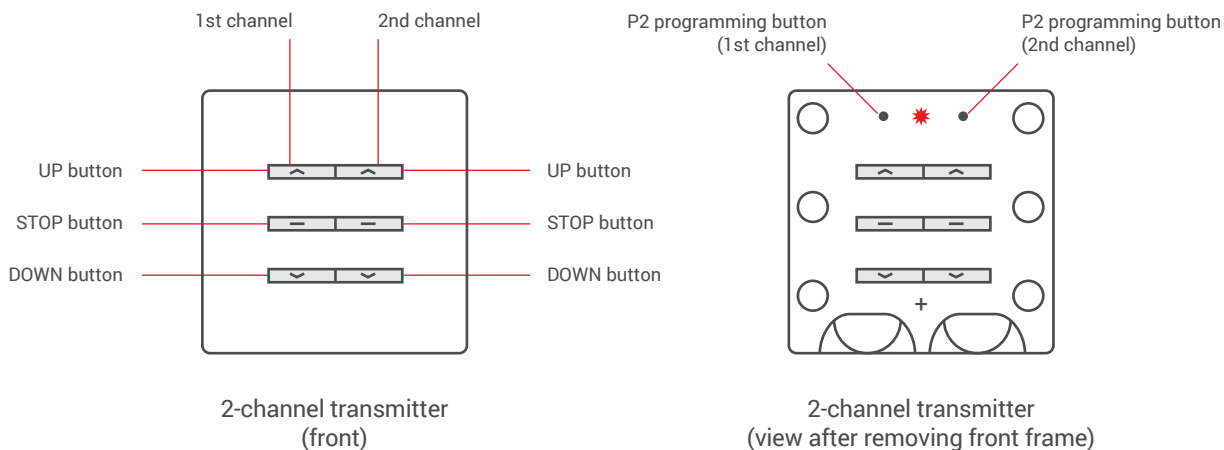


Single-channel transmitter  
(view after removing front frame)



In order to fully explore available functions of CAMELEO series please take a moment and read this manual before using the device. CAMELEO transmitters are compatible with all YOODA brand devices.

## Detailed description



1. Estimated battery lifespan is 3 year if the device runs 4 commends a day in average.
2. Batteries should be changed when LED diode stops flashing when channel is being changed or receiving device stops reacting to commands.
3. When placing the battery ensure that polarity is correct.

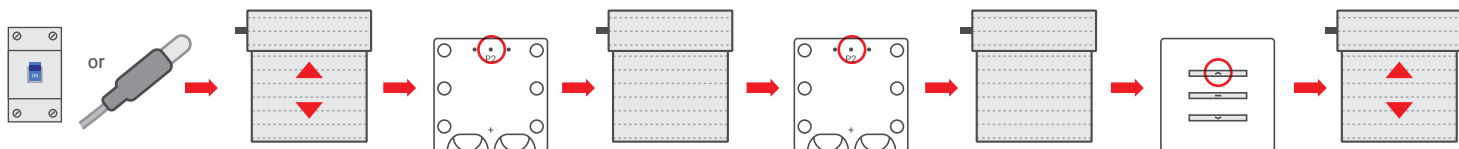


Batteries contain substances that may be hazardous to health and may pollute the environment. Used batteries should be disposed of properly.

## Programming remotes with R-type motors



1. Way of programming first transmitter depends on type of radio receiver. When programming first transmitter please follow instruction of the device that is going to be controlled by the transmitter.
2. Longer than 5 seconds pause between series of button clicks during programming will cause device to switch off from programming mode without saving any changes.
3. Programming first transmitter will result in deleting all previously programmed transmitter.



Turn on power supply or press microswitch (for 2 sec.) when power is on.

Motor will make a sound. Roller shutter will make an up / down move.

Press programming button (P2) on the remote.

Motor will make a sound.

Press programming button (P2) on the remote.

Motor will make a sound.

Press UP button on the remote.

Roller shutter will make an up / down move as the motor will make few sounds.