

DC1690 Receiver Specification

Version NO. : A/00

T Receiver specification

- Technical support
- Wireless receiver
 - Electronic
 - Light-touch
 - Dot-move
 - The standard type DC1690 can store 20 valid channels, if connect new channels after storing 20 channels, only the last one will be covered circularly
 - Size: 80mmX80mm;
 - DC1690 maximum output power: 300W

- ! ① Group control channel match code, delete code, all unworkable.
 ② When receiver in the mode of dot function, press up button or down button within 2 seconds, emitter control the motor working in dot function. If continuous press more than 2 seconds motor will last working

T Control range

Technical support

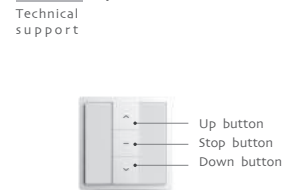
! Effective transmitting distance may have deviation due to actual environment

	L1 in the air	L2 with concrete walls	Emission frequency
230V/50Hz	200m	35m	433.92MHz

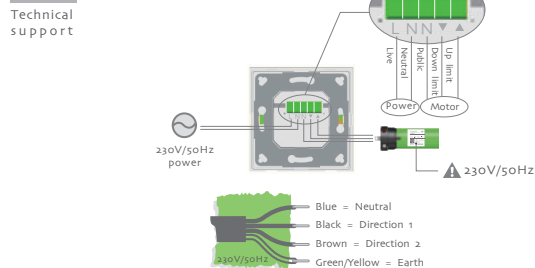
T Matchable emitter



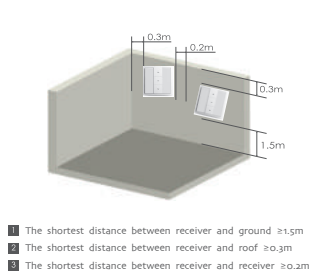
T Button specification



T Mode of connection

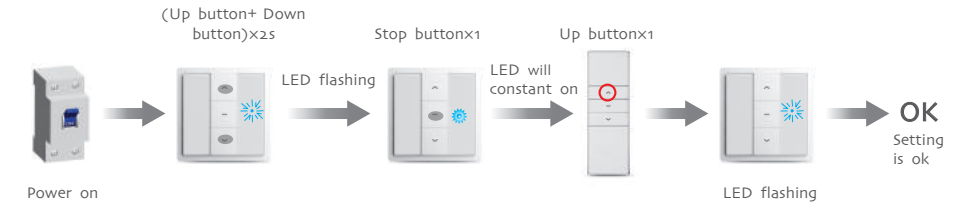


The best installation distance



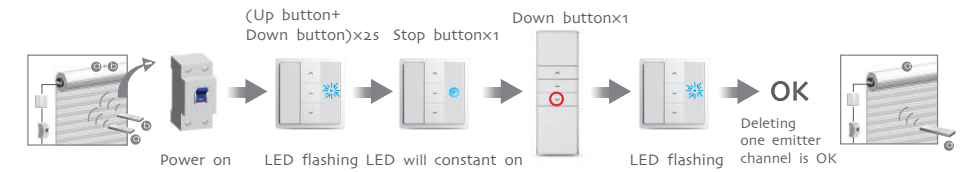
A Set up and add emitter

Additional function: During setting, the time between two operation must be within 6S, or else, it will revert to the original state.



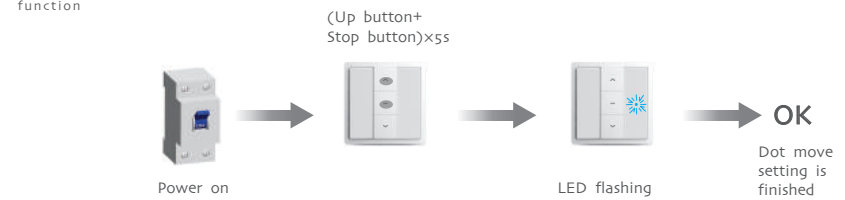
A Cancel one channel of emitter

Additional function: During setting, the time between two operation must be within 6S, or else, it will revert to the original state.



A Dot-move setting

Additional function: Repeat setting, function is cancelled



A Delete all the emitter channels

