

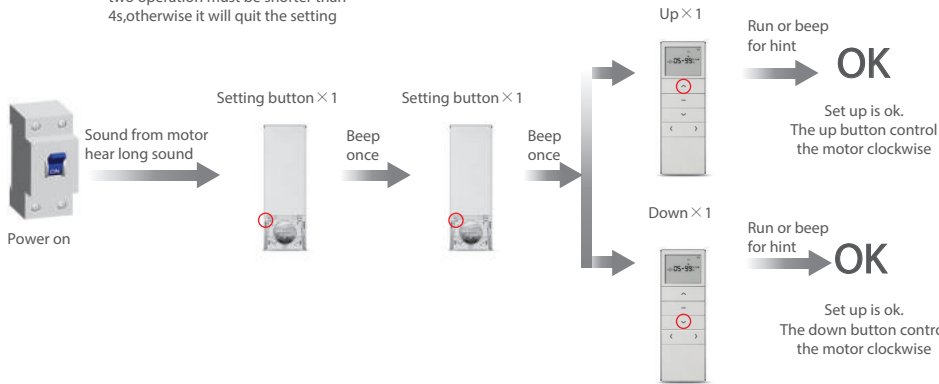
# A

## Matchable R tubular motor setting up

Additional function

During the settings, the time between two operation must be shorter than 4s, otherwise it will quit the setting

**!** Delete all the datas of the motor and the new emitter has been programmed.

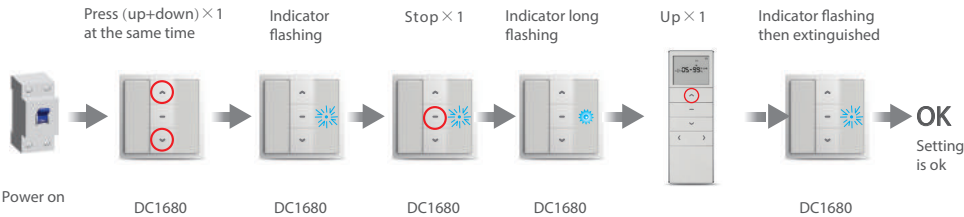


# A

## Matchable DC1680 setting up

Additional function

**!** During the settings, the time between two operation must be shorter than 6s, otherwise it will quit the setting

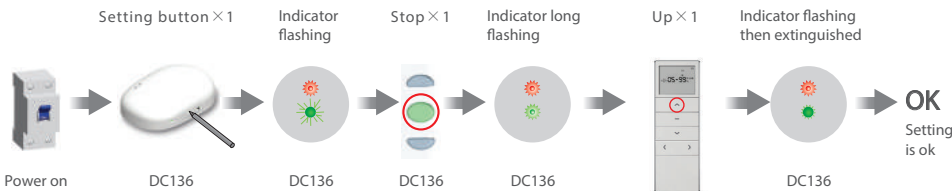


# A

## Matchable DC136 setting up

Additional function

**!** During the settings, the time between two operation must be shorter than 10s, otherwise it will quit the setting



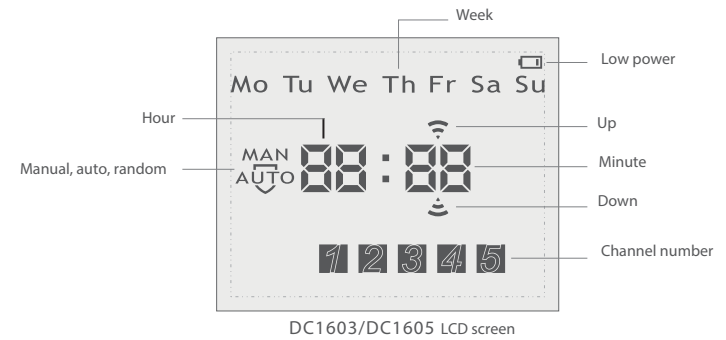
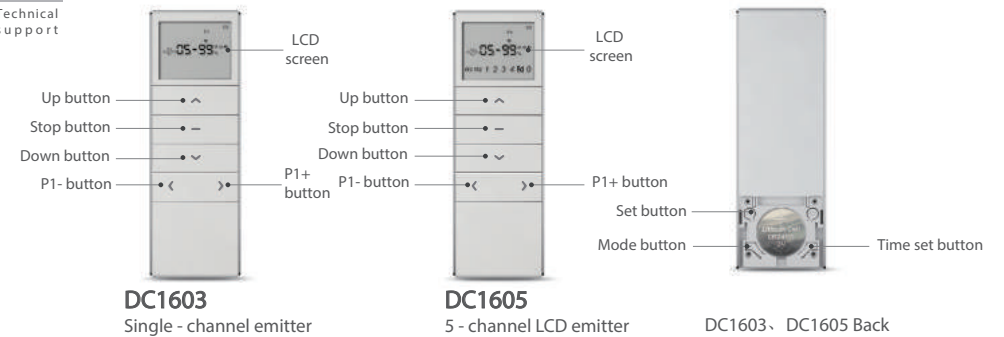
# DC1603 DC1605 Emitter Specification

Version NO: A/01

# T

## Receiver specification

Technical support



# T

## Technical support

Technical specification	Fuction instruction
<ul style="list-style-type: none"> <li>• Input voltage : 3V(cr2450)</li> <li>• Transmitting frequency : 433MHz</li> <li>• Transmitting power : 10 milliwatt</li> <li>• Operating temperature : -10°C—50°C</li> <li>• Transmision distance : 200 meters open office, 35 meters on two walls</li> </ul>	<p>DC1603(single channel) and DC1605(5-channel) are both for optional. The No. indicated on the bottom of the LCD represents one channel. Press the "P1-" to shift to the lower channel, and the "P2" is to shift to the higher channel. It will enter the group control mode after all the channel is indicated on the LCD. All the channels are valid in this mode.</p> <p><b>!</b> Notice: transmitter do not exposed to moisture and strike, so as not to affect life. When you use transmitter, if found emission distance obviously short or less sensitive, please change another same new battery. Please have batteries for recycling.</p>

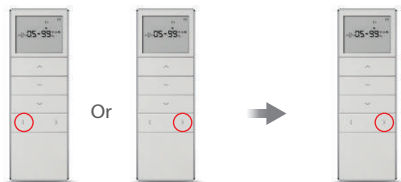
# T

Technical support

## Effective channel selection(Non group control)



DC1803 single-channel emitter don't have this function



Under the auto or random mode Press "P1- button" or "P1+button" to switch the desired channel



After switch the desired channel,Long press "P1+ button" for about 3 seconds

OK

The channel flicks,the auto-timing and the random-timing is invalid,the channel doesn't flick, the auto-timing and random-timing is valid.It will shift repeatedly.

# A

Technical support

## Mode switch



Manual mode: normal transmitter,without timing function  
Auto mode: normal transmitter with timing function  
Random mode: normal transmitter with timing function, time period 15 minutes random emission



Press "Mode button", switch to manual mode

Press "Mode button", switch to auto mode

Press "Mode button", switch to random mode

Press "Mode button" repeatedly, mode will switch circularly

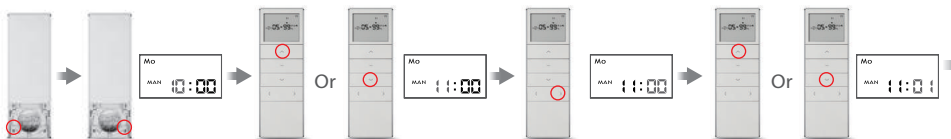
# A

Technical support

## The current time setting(only under manual mode;)



In the process of setting, every effective button-pressing takes 60 seconds, after 60 seconds, if no button is pressed, the setting mode will be quitted automatically.



Press "Mode button",switch to manual mode

Long press "Time setting button" for 3 seconds, "hour" twinkles

Press "Up button" or "Down button", can adjust hour

Press "P1+ button" until the "minute" twinkles

Press "Up button" or "Down button", can adjust minute



Press "P1+ button" until the "week" twinkles

Press "Up button" or "Down button", can adjust week

Long press "Time setting button" 3s,"hour" and "minute"twinkles at the same time save the setting

Press "Time setting button"second will be zero clearing and start to count time.

# A

Technical support

## The set-time check and setting(Non group control)



- ① If the set time is "—:—", that means the upward (or downward) in this channel has no timing function.
- ② In the process of setting, every effective button-pressing takes 60 seconds, after 60 seconds, if no button is pressed, the setting mode will be quitted automatically
- ③ The time interval between motor going up and down must be over 32 mins. If less than 32 mins, it will show "Er01" to remind the operation wrong, and need re-set.
- ④ Under the status of Timer Setting, shortly press P1-/P1+ button of channel to adjust Minute/Hour
- ⑤ Under the status of Timer Setting, shortly press Mode button to adjust Timer for Up/Down.
- ⑥ During the viewing and setting status,you can press the stop button to have a quick exit;
- ⑦ After the timing set is finished,it will be memorized when black out.

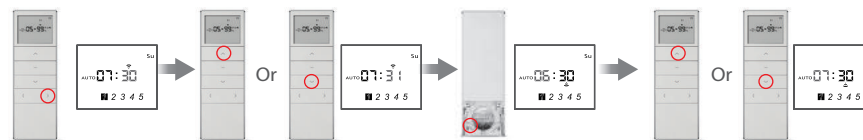


Press "Mode button", switch to auto or random mode;

Long press the "time setting button" for 3s to enter into the timing status, press the up or down button,you can check the setting time of every day.

Press "Time setting button", the hour twinkles,enter the up time setting state

Press "Up button" or "Down button", adjust the time (hour)



Press "P1+ button", adjust the up time (minute),the minute twinkles

Press "Up button" or "Down button",adjust the time (minute)

Press "Mode button", which confirms the set up time, and switches to down time setting,and the hour twinkles

Press "Up button" or "Down button", adjust the time (hour)



Press "P1+ button", adjust the down time (minute),the minute twinkles

Press "Up button" or "Down button",adjust the time (minute)

Press "Time setting button", which confirms the set down time, and switch to Mo up timing (hour), and the hour twinkles.

After set the up and down timing for the whole week in turn,press the "Time setting button" for 3s,the "Hour" and "min" on LCD will twinkle,then all the settings will be saved and it quit the set mode automatically.