

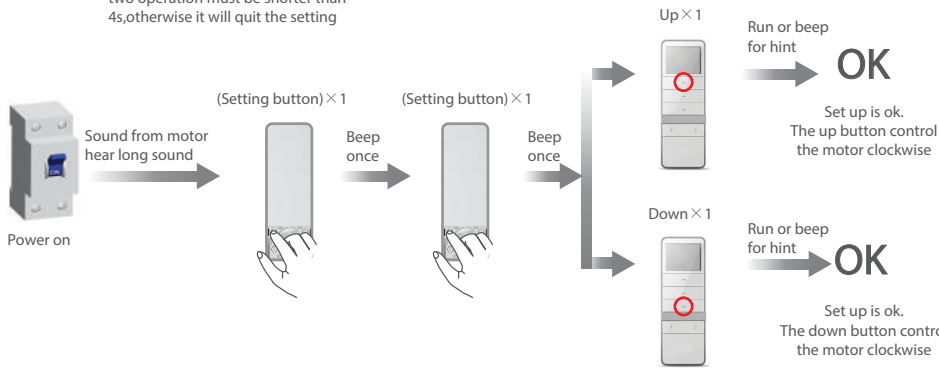
A

Additional function

Matchable R tubular motor setting up

During the settings, the time between two operation must be shorter than 4s, otherwise it will quit the setting

! Delete all the datas of the motor and the new emitter has been programmed.

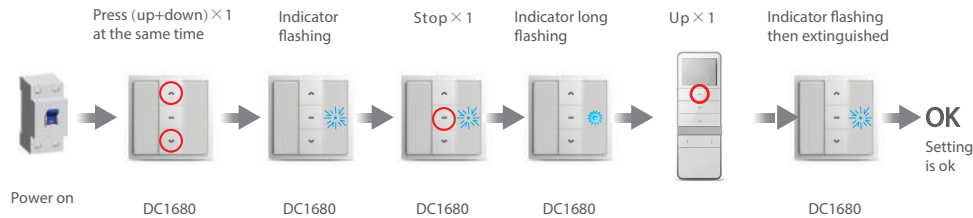


A

Additional function

Matchable DC1680 setting up

! During the settings, the time between two operation must be shorter than 6s, otherwise it will quit the setting

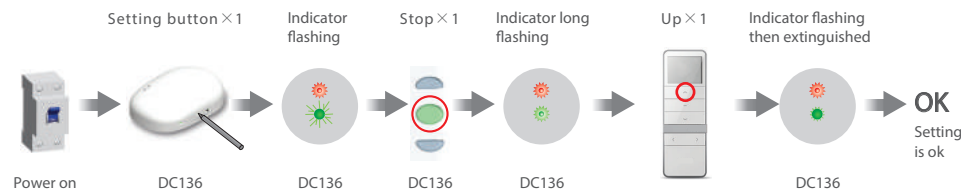


A

Additional function

Matchable DC136 setting up

! During the settings, the time between two operation must be shorter than 10s, otherwise it will quit the setting

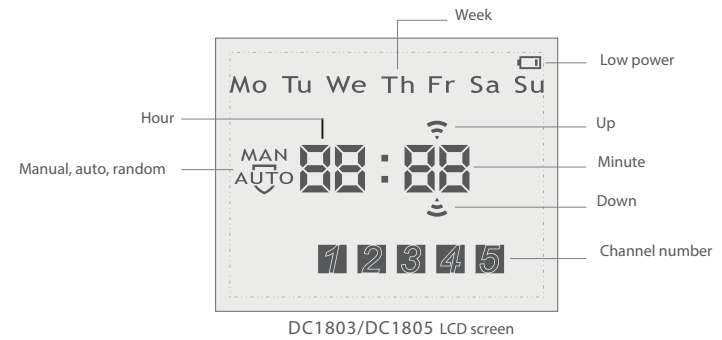
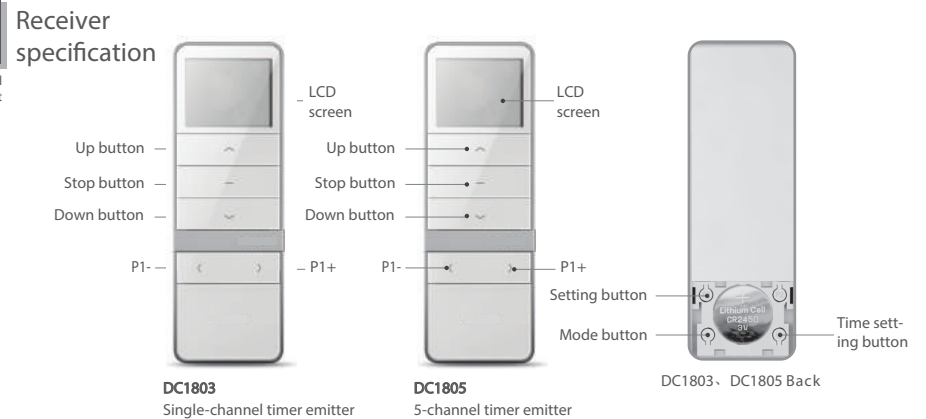


DC1803 DC1805 Emitter Specification

Version NO: A/00

T

Technical support



T

Technical support

Technical specification	Function instruction
<ul style="list-style-type: none"> • Input voltage : 3V(cr2450) • Transmitting frequency : 433MHz • Transmitting power : 10 milliwatt • Operating temperature : -10°C—50°C • Transmission distance : 200 meters open office, 35 meters on two walls 	<p>DC1803(single channel) and DC1805(5-channel) are both for optional. The No. indicated on the bottom of the LCD represents one channel. Press the "P1-" to shift to the lower channel, and the "P1+" is to shift to the higher channel. It will enter the group control mode after all the channel is indicated on the LCD. All the channels are valid in this mode.</p> <p>! Notice: transmitter do not exposed to moisture and strike, so as not to affect life. When you use transmitter, if found emission distance obviously short or less sensitive, please change another same new battery. Please have batteries for recycling.</p>

T DC1805 Effective channel selection (Non group control)

Technical support



Under the auto or random mode
Press "P1- button" or "P1+button"
to switch the desired channel

After switch the desired
channel, Long press "P1+
button" for about 3 seconds

! DC1803 single-channel emitter
don't have this function

OK

The channel flicks, the auto-timing and the
random-timing is invalid, the channel does't
flick, the auto-timing and random-timing is
valid. It will shift repeatedly.

A Mode switch

Technical support



Press "Mode button",
switch to manual mode

Press "Mode button",
switch to auto mode

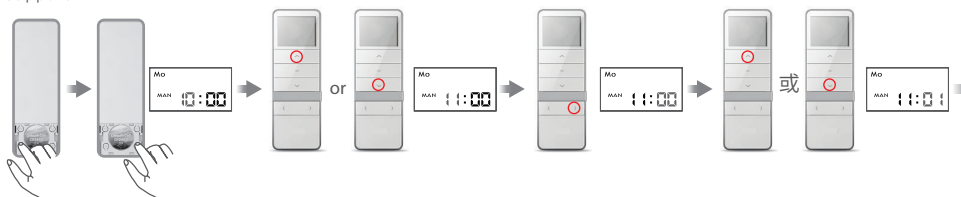
Press "Mode button",
switch to random mode

Press "Mode button"
repeatedly, mode
will switch circularly

Manual mode: normal transmitter, without timing function
Auto mode: normal transmitter with timing function
Random mode: normal transmitter with timing function,
time period 15 minutes random emission

A The current time setting (only under manual mode;)

Technical support



Press "Mode
button", switch
to manual mode

Long press "Time
setting button"
for 3 seconds,
"hour" twinkles

Press "Up button" or
"Down button", can
adjust hour

Press "P1+ button"
until the "minute"
twinkles

Press "Up button" or
"Down button", can
adjust minute

In the process of setting, every
effective button-pressing takes 60
seconds, after 60 seconds, if no
button is pressed, the setting mode
will be quitted automatically.



Press "P1+ button"
until the "week"
twinkles

Press "Up button" or
"Down button", can
adjust week

Long press "Time setting button"
3s, "hour" and "minute" twinkles
at the same time save the setting

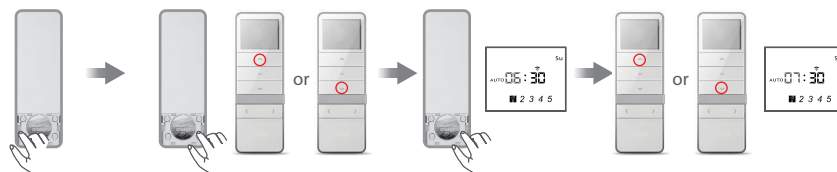
Press "Time setting
button" second will
be zero clearing and
start to count time.

A The set-time check and setting (Non group control)

Technical support

- ① If the set time is "—:—", that means the upward (or downward) in this channel has no timing function.
- ② In the process of setting, every effective button-pressing takes 60 seconds, after 60 seconds, if no button is pressed, the setting mode will be quitted automatically
- ③ The time interval between motor going up and down must be over 32 mins. If less than 32 mins, it will show "Er01" to remind the operation wrong, and need re-set.
- ④ Under the status of Timer Setting, shortly press P1-/P1+ button of channel to adjust Minute/Hour
- ⑤ Under the status of Timer Setting, shortly press Mode button to adjust Timer for Up/Down.
- ⑥ During the viewing and setting status, you can press the stop button to have a quick exit;
- ⑦ After the timing set is finished, it will be memorized when black out.

!

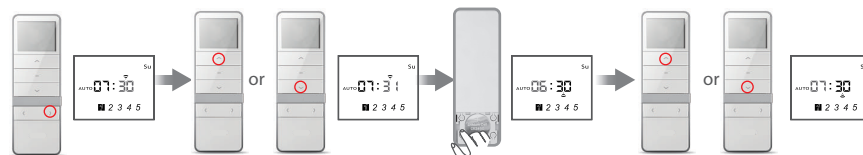


Press "Mode button",
switch to auto or
random mode;

Long press the "time setting
button" for 3s to enter into
the timing status, press the
up or down button, you can
check the setting time of every day.

Press "Time setting button",
the hour twinkles, enter the
up time setting state

Press "Up button" or
"Down button", adjust
the time (hour)

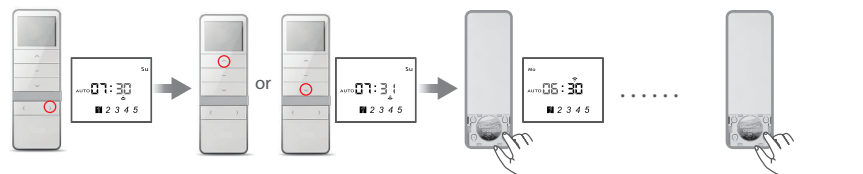


Press "P1+ button",
adjust the up time
(minute), the minut-
et twinkles

Press "Up button" or
"Down button", adjust
the time (minute)

Press "Mode button", which
confirms the set up time,
and switches to down time
setting, and the hour twinkles

Press "Up button" or
"Down button", adjust
the time (hour)



Press "P1+ button",
adjust the down time
(minute), the minut-
et twinkles

Press "Up button" or
"Down button", adjust
the time (minute)

Press "Time setting button",
which confirms the set
down time, and switch to
Mo up timing (hour),
and the hour twinkles.

After set the up and down
timing for the whole week
in turn, press the "Time setting
button" for 3s, the "Hour" and
"min" on LCD will twinkle, then
all the settings will be saved
and it quit the set mode automatically.