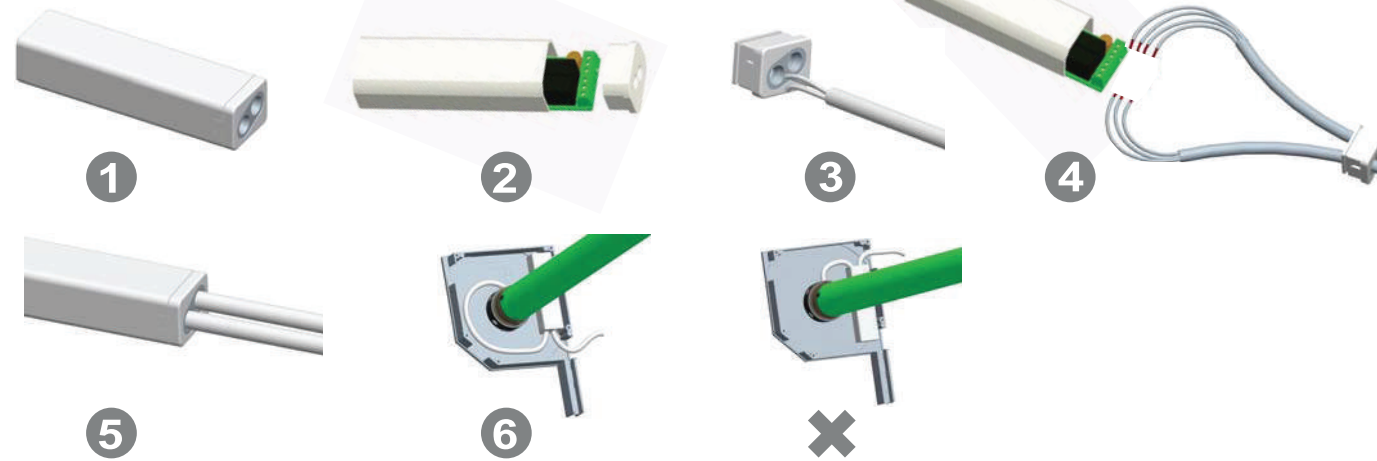


A Receiver installation

Additional Function

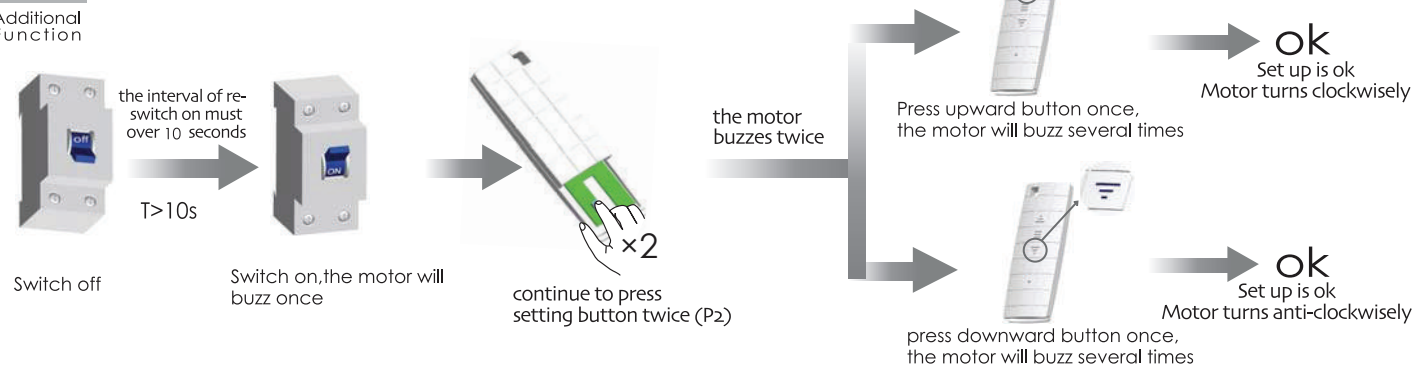


A Set up

Additional Function

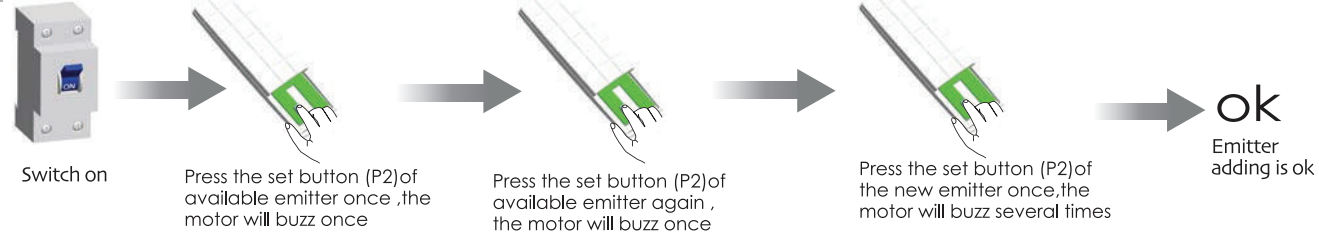
Only when fasten the installation of DC74A can do as the following, or will affect the function usage of products

The interval time to press different button must $1s < T < 6s$ for all setting,



A Add Emitter

Additional Function



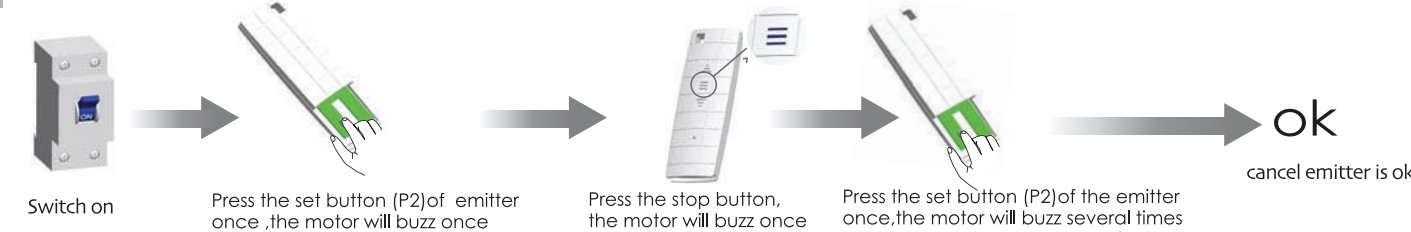
A Dot-move setting

Additional Function



A Cancel Emitter

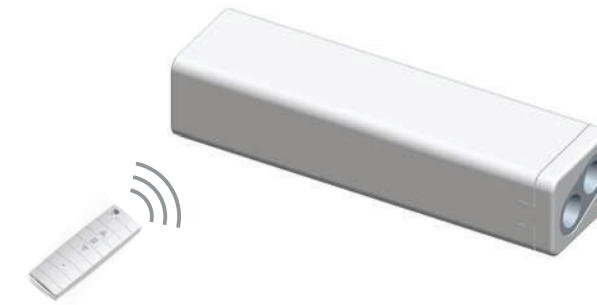
Additional Function



433MHz 868MHz CE
All controls support 433MHz & 868MHz
All controls support 230V/50Hz & 120V/60Hz

DC74A Control System Specification

Version NO. : A/00



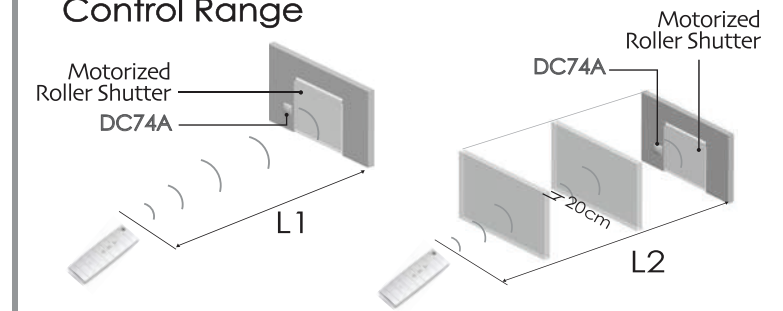
Control System

T Technical Support

- 5-channel emitter = single channel emitter $\times 5$
One channel of emitter can control 20 receivers at most at the same time.
- DC74A Receiver
One DC74A Receiver maximum can store 20 channels, over 20 channels, if still need add new channels, it will be repeating covered in turn from the second channel.

In the process of set up emitter and DC74A receiver, After the success of each set, tubular motor beep several times, then tubular motor move clockwise and counterclockwise one time as remind Receiver in the mode of dot function, press up key and down key within 2 seconds, emitter control motor working in dot function; if continuous press more than 2 seconds motor will last working. Group control channel match code is unworkable.

Control Range

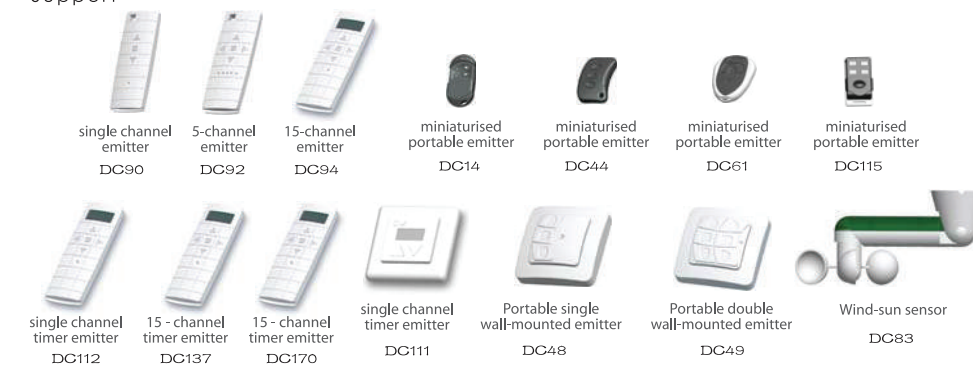


	L1 Open	L2 Partition	Emission frequency
230V/50Hz	200m	35m	433.92MHz
120V/60Hz	200m	35m	

T Matchable emitter

Technical Support

PC14, DC48, DC49, DC44, DC61 press up and stop button at the same time that means P2 button.

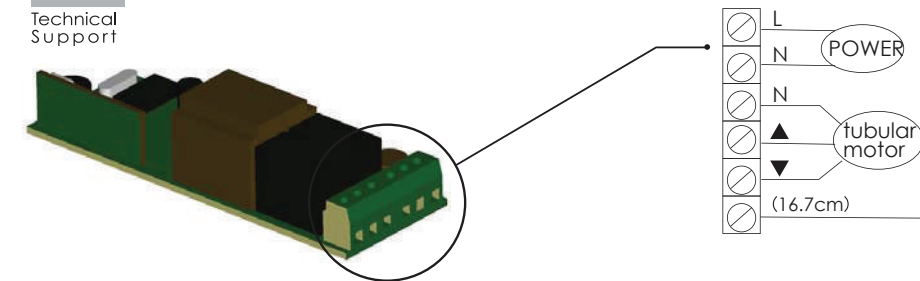


Matchable tubular motor

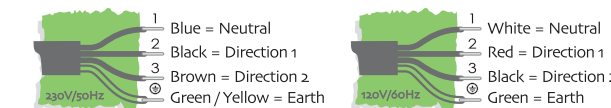


T Circuit installation

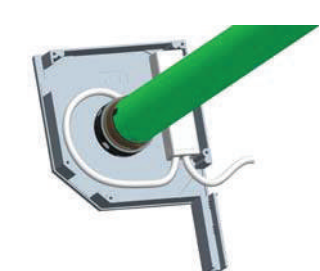
Technical Support



230V / 50Hz or 120V / 60Hz according to product nameplate



The best installation distance



- The shortest distance between receiver and ground $\geq 1.5m$
- The shortest distance between receiver and roof $\geq 0.3m$
- The shortest distance between receiver and receiver $\geq 0.2m$