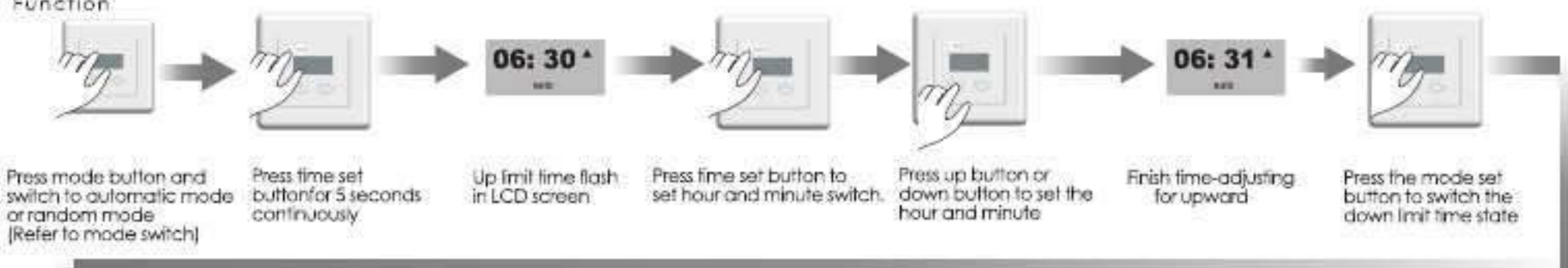




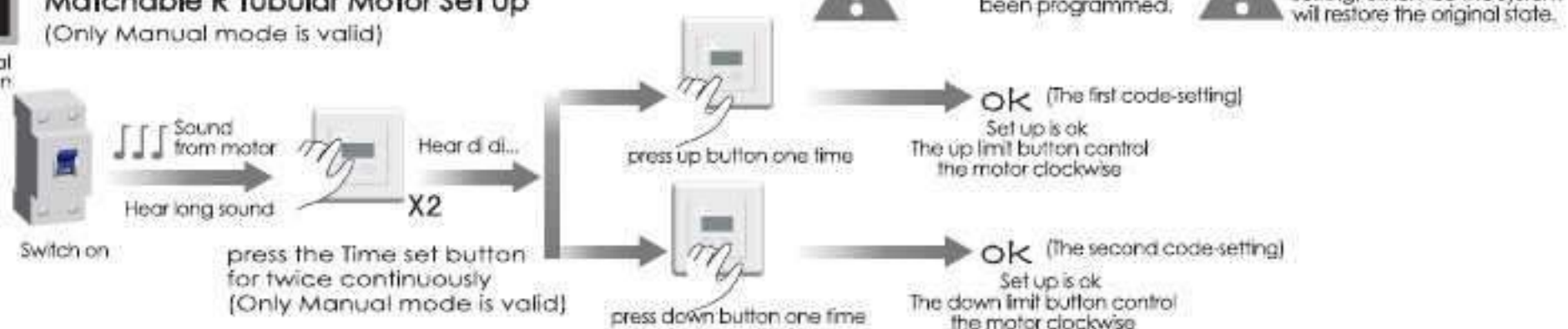
Regular Time Setting

Additional Function



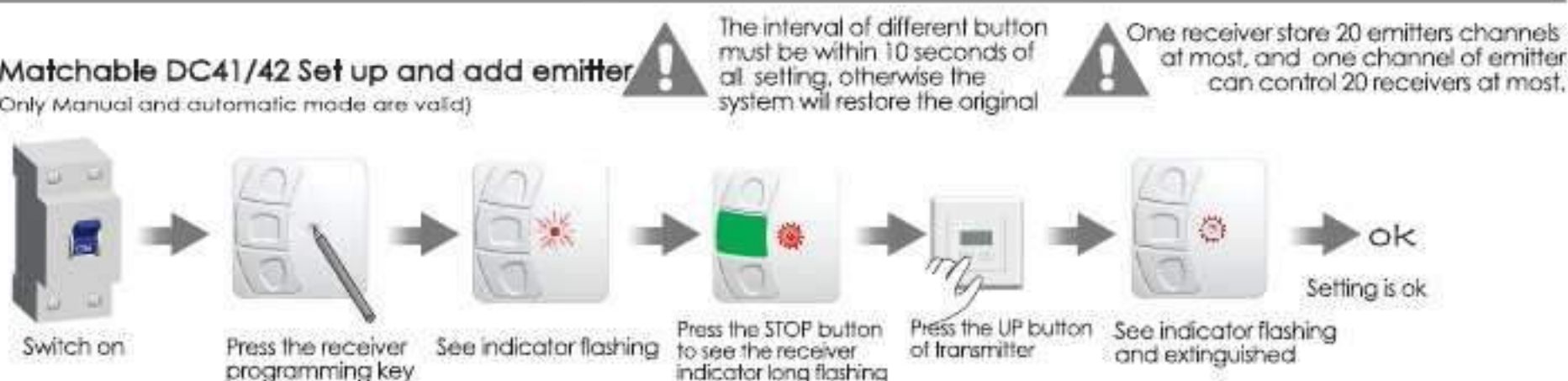
Matchable R Tubular Motor Set up (Only Manual mode is valid)

Additional Function



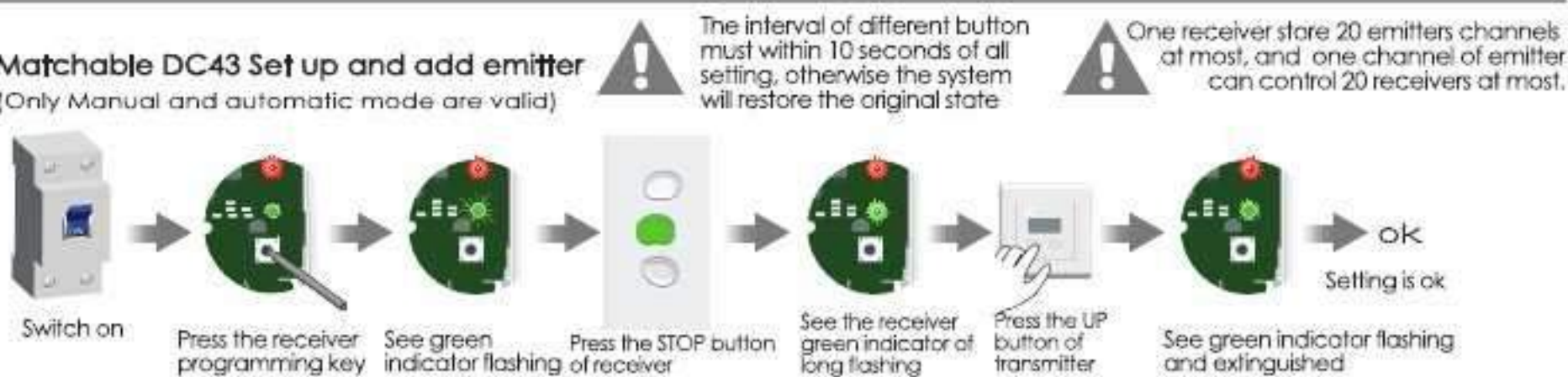
Matchable DC41/42 Set up and add emitter (Only Manual and automatic mode are valid)

Additional Function



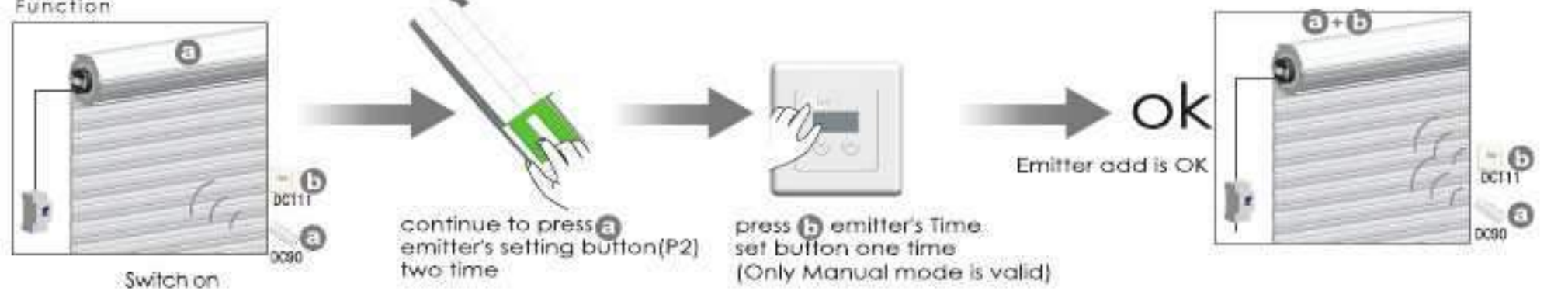
Matchable DC43 Set up and add emitter (Only Manual and automatic mode are valid)

Additional Function



Matchable R Tubular Motor add emitter (Only Manual mode is valid)

Additional Function



CE FC

All controls support 433MHz & 868MHz

DC111 Time Transmitter Specification

Version No. : A/01



emitter specification

- Input voltage: 3V (CR2430)
- Transmitting frequency: 433.92MHz
- Transmitting power: 10 milliwatt
- Operating temperature: -10℃ ~ +50℃
- Transmission distance: 100 meters open Office 20 meters on two walls

Up button: control motor upward
 Down button: control motor downward
 Mode set button: For switch DC111 mode
 Time set button: for adjust the internal time of DC111

Remarks: 1 When the motor rotates upward, press the down button once to stop motor rotation, and press the down button in the second time to make motor rotate downward.
 2 When the motor rotates downward, press the up button once to stop motor rotation, press the up button in the second time to make motor rotate upward.
 3 With manual mode, pressing adjusting button means the same as pressing setting button(P2) (if can match both Radio motor and Electronic motor).

Note1: The time difference between setting up limit time and down limit cannot be less than 32 minutes. Otherwise the Error will show on the LCD screen of transmitter under Automatic mode and Random mode. Simultaneously, Time set is invalid, and set status is exited.

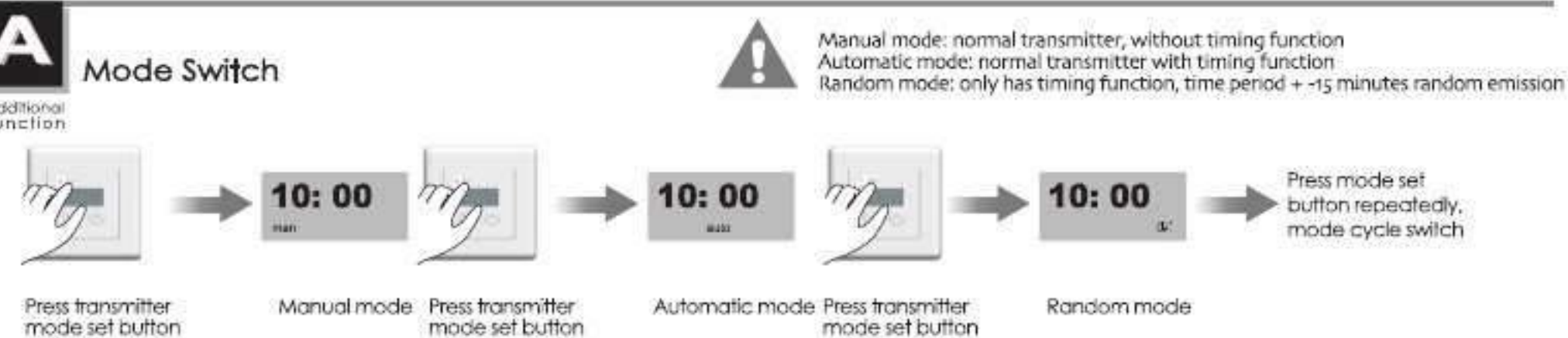


Technical Support



Mode Switch

Additional Function



The Current Time Setting

Additional Function

