



Effective channel selection

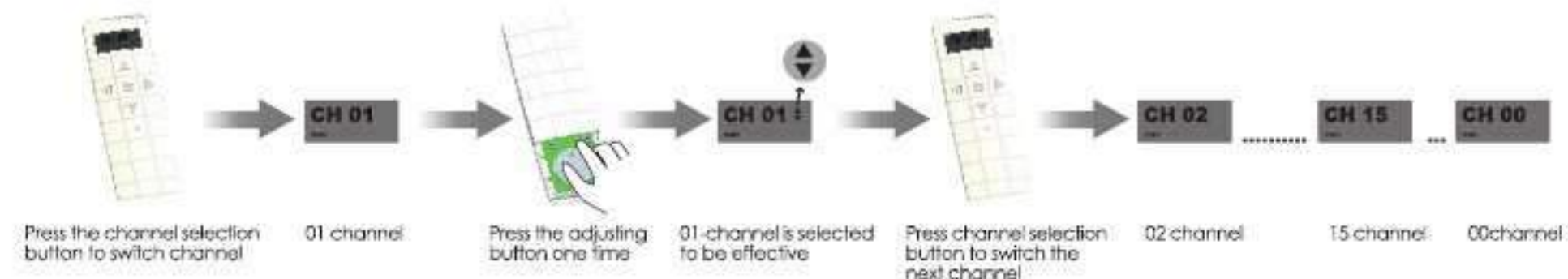
Additional Function



The LCD screen will quit the channel show if it shows for 2 seconds and is not switched. The transmitter will remain this channel and show the current time.

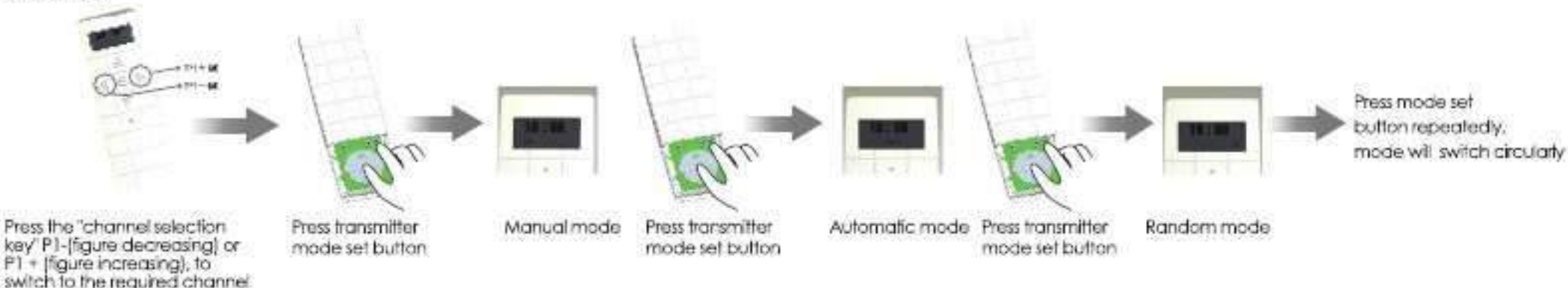


When the transmitter Shows channel, press adjusting button to switch this channel effective and ineffective



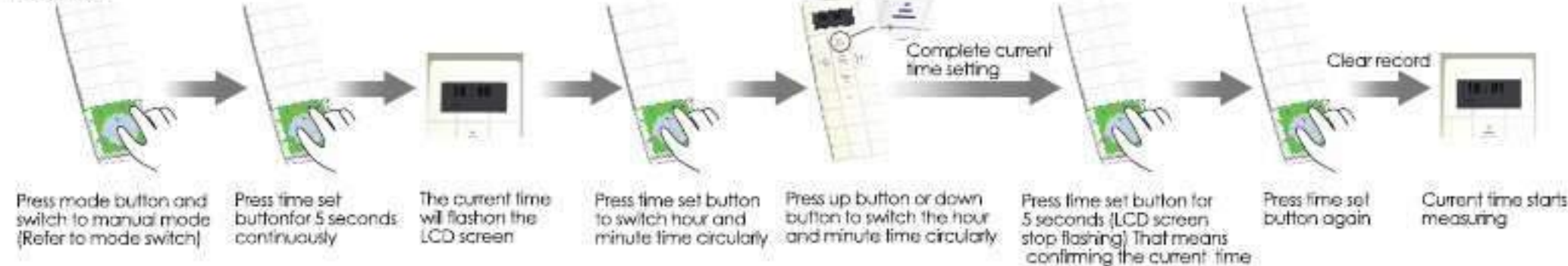
Mode Switch

Additional Function



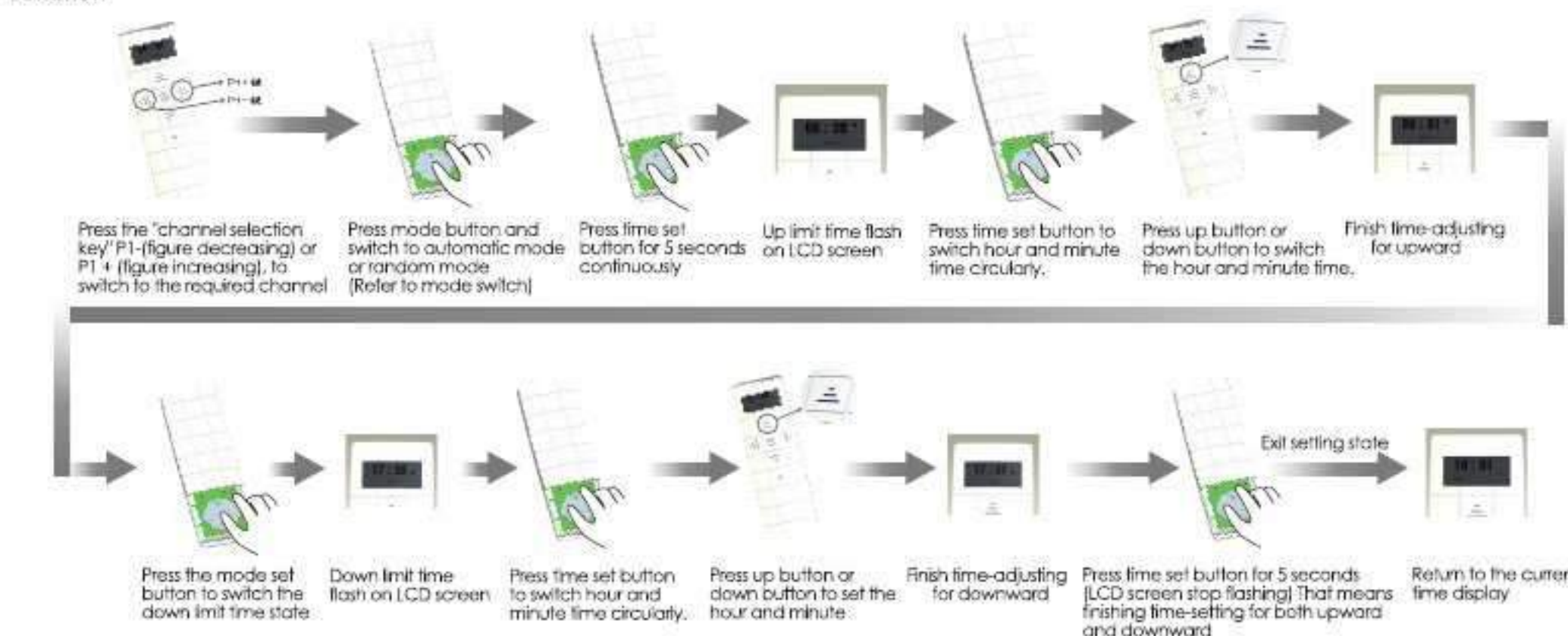
The Current Time Setting

Additional Function



Timing Setting

Additional Function



All controls support 433MHz & 868MHz

DC170 Time Transmitter Specification

Version No. : A/00



Technical Support

- Input voltage: 3V (CR2430)
- Transmitting frequency: 433.92MHz
- Transmitting power: 10 millwatt
- Operating temperature: -10°C ~ +50°C
- Transmission distance: 200 meters open Office
35 meters on two walls

- Up button: control motor upward
- Down button: control motor downward
- Stop button: control motor stop
- Set up button: features settings for the motor (effective for Radio motor)
- Mode set button: For switch motor mode
- Time set button: for adjust the internal time of transmitter

DC170 is 15 Channel Timer emitter, One number of LCD screen means one control channel. Press 'channel choose' button P1- (figure descending) or P1+ (figure increasing) to change the channel. And so on, loose finger when the indicator light move to suitable channel, this channel is the current channel.

1 If LCD screen number shows CH00 that means group control. Group channel specific operation is as follows:

The manual mode under Group-control (CH00) channel — whether group-control channel (CH00) is selected for effective state or not, press button to control all channels' motors rotation and group-channel timing is invalid (There is no timing function when under manual mode)

The automatic mode under Group-control (CH00) channel — when group-control channel (CH00) is not selected for effective state (refer to the effective channel selection), button-control is invalid, group-channel timing is invalid.

The automatic mode under Group-control (CH00) channel — when group-control channel (CH00) is selected for effective state (refer to the effective channel selection), press button to control all channels' motors rotation, group-channel timing is effective, that is, the time of selected channel (refer to the effective channel selection) is available.

The random mode under Group-control (CH00) channel — when group-control channel (CH00) is not selected for effective state (refer to the effective channel selection), button-control is invalid, group-channel timing is invalid.

The random mode under Group-control (CH00) channel — when group-control channel (CH00) is selected for effective state (refer to the effective channel selection), button-control is invalid, group-channel timing is effective, that is, the time +15 minutes of selected channel (refer to the effective channel selection) is available by random.

2 It's the common channel when switch to the LCD screen display figure for CH01, CH02 ... CH15. Common channel specific operation is as follows:

Manual mode under Common channel — Whether the channel is not selected for effective state or not, press button to control this channel motor rotation, and the timing emitter is invalid

Automatic mode under common channel — when the channel is not selected for effective state (refer to the effective channel selection), only stop key is available, the timing emitter is invalid

Automatic mode under common channel — when the channel is selected for effective state (refer to the effective channel selection), press buttons to control this channel motor rotation, the timing emitter is available.

Random mode under common channel — when the channel is not selected for effective state (refer to the effective channel selection), only stop key is available, the timing emitter is invalid

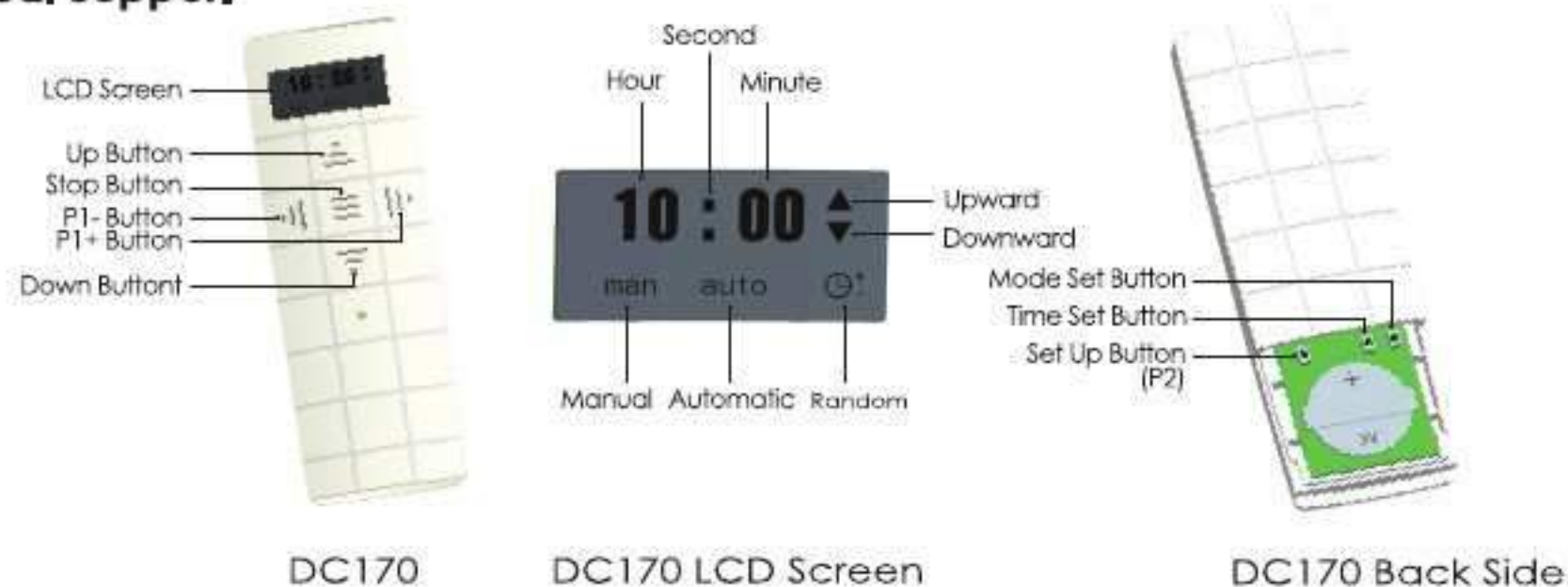
Random mode under common channel — when the channel is selected for effective state (refer to the effective channel selection), only stop key is available, the timing + -15 minutes emitting is effective.

Note 1: The time difference between setting up limit time and down limit cannot be less than 32 minutes. Otherwise the Error will show on the LCD screen of transmitter under Automatic mode and Random mode. Simultaneously, Time set is invalid, and set status is exited.

Note 2: There is no timing setting when under group control channels status



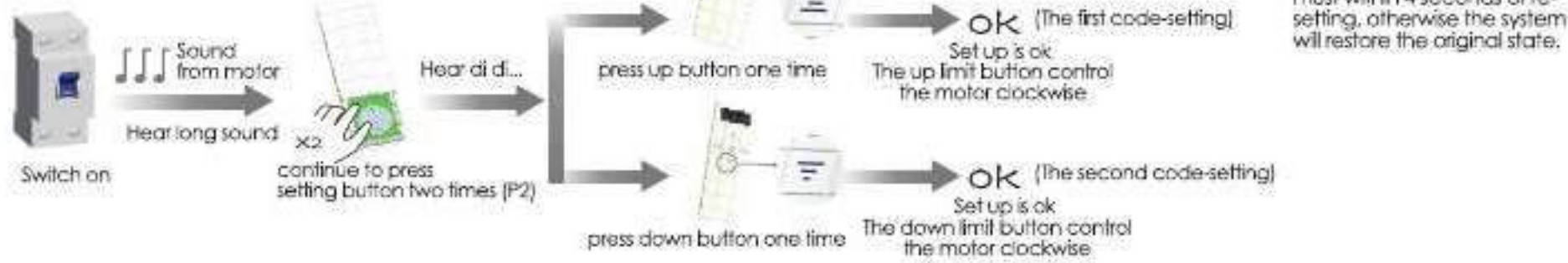
Technical Support





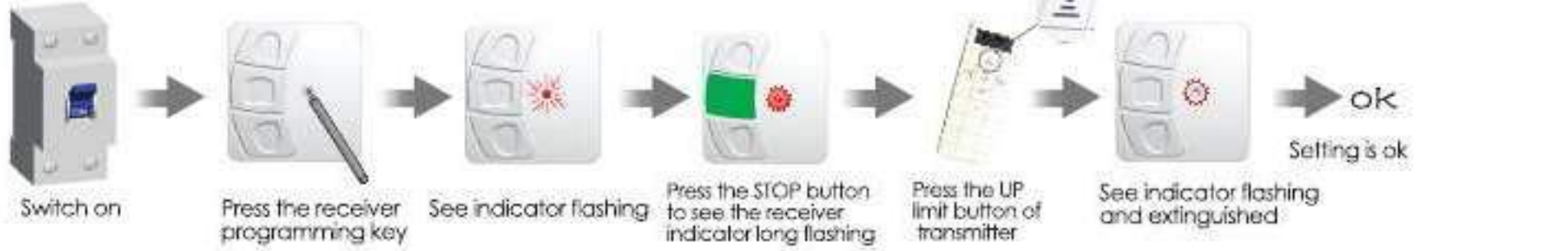
Matchable R Tubular Motor Set up

(Only Manual mode is valid)



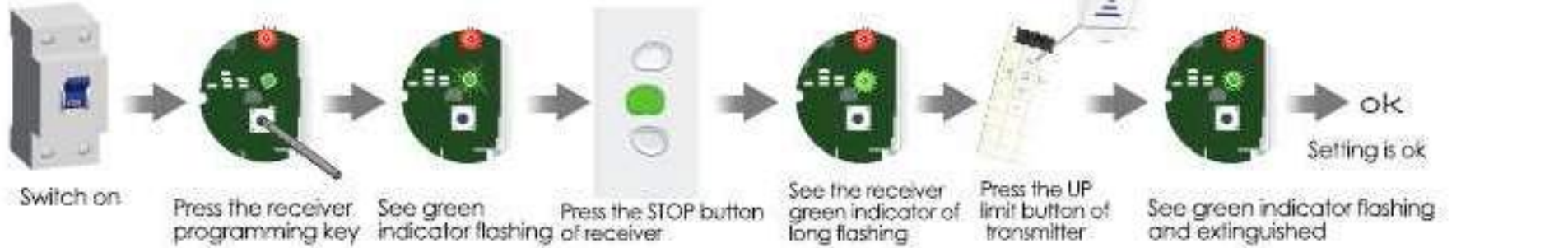
Matchable DC41/42 Set up

(Only Manual and automatic mode are valid)



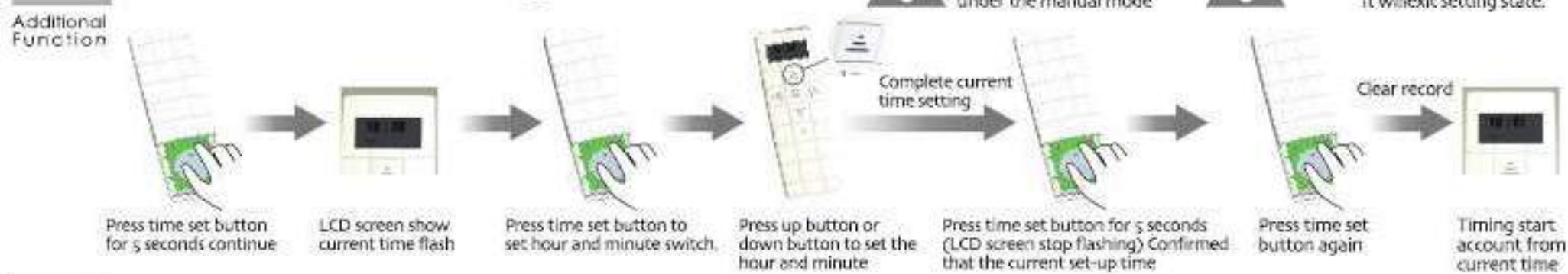
Matchable DC43 Set up

(Only Manual and automatic mode are valid)

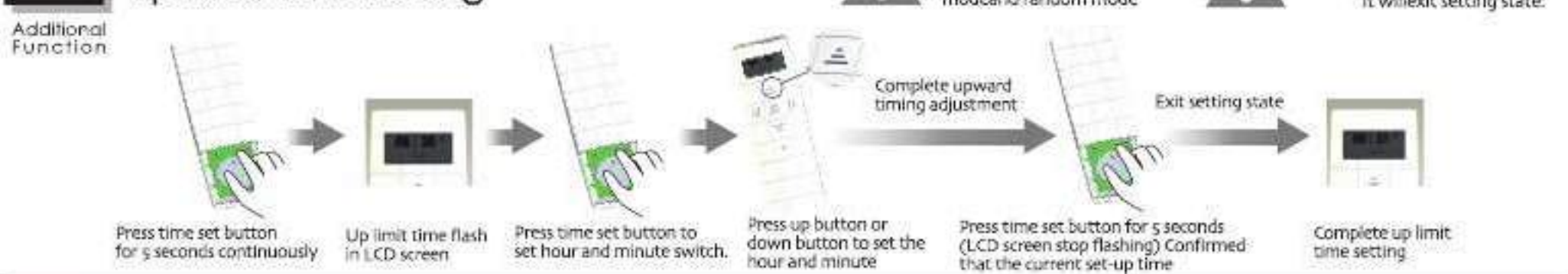




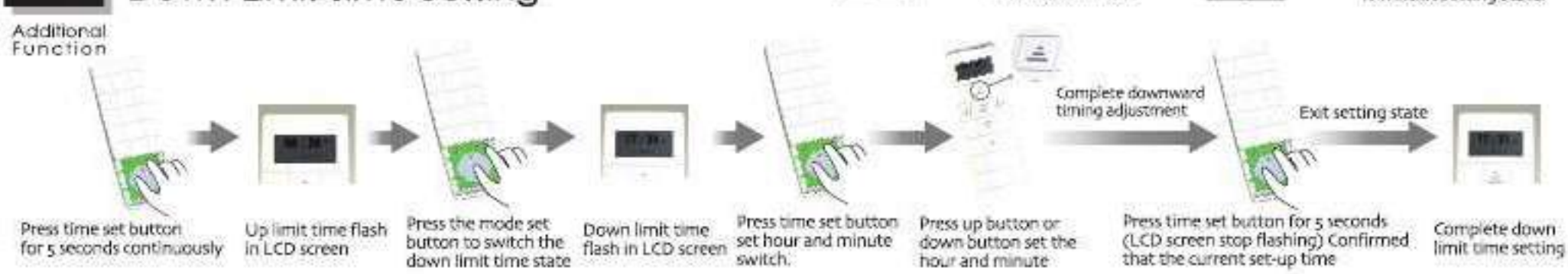
The Current Time Setting



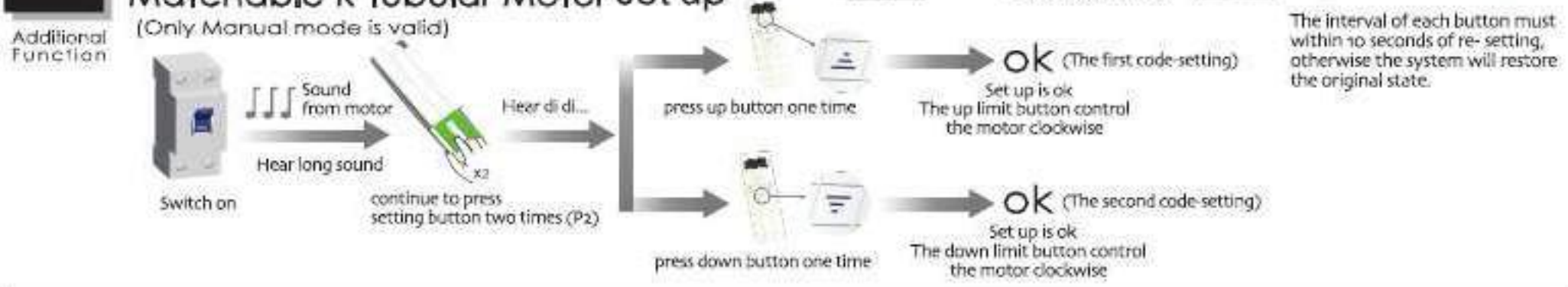
Up Limit Time Setting



Down Limit Time Setting



Matchable R Tubular Motor Set up



Matchable DC41/42 Set up



Matchable DC43 Set up



DC112 Time Transmitter Specification

Version No. : A/01



Technical Support

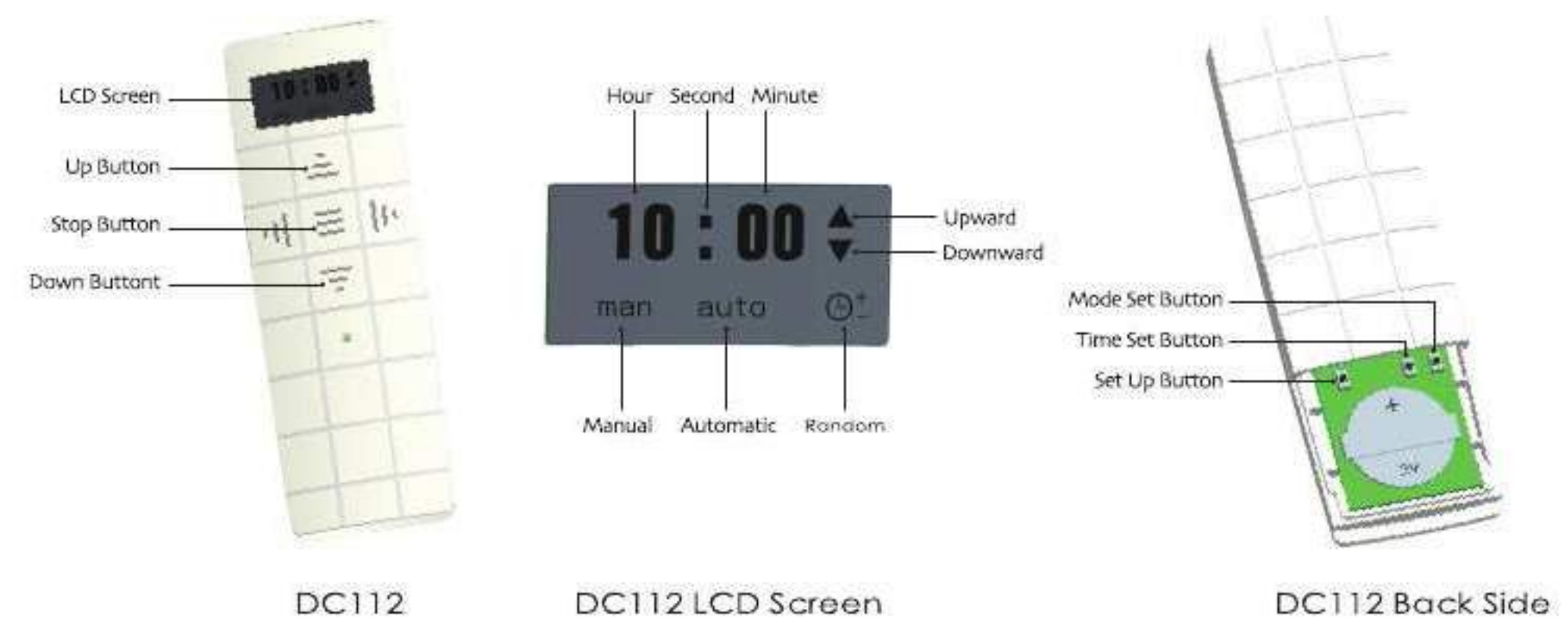
- Input voltage: 3V (CR2430)
- Transmitting frequency: 433.92MHz
- Transmitting power: 10 milliwatt
- Operating temperature: -10°C — +50°C
- Transmission distance: 200 meters open Office
35 meters on two walls

- Up limit button: control motor upward
- Down limit button: control motor downward
- Stop button: control motor stop
- Set up button: features settings for the motor (effective for Radio motor)
- Mode set button: For switch motor mode
- Time set button: for adjust the internal time of transmitter

Note: The time difference between setting up limit time and down limit cannot be less than 32 minutes. Otherwise the Error will show on the LCD screen of transmitter under Automatic mode and Random mode. Simultaneously, the timing transmitter is out of function and only the Manual transmitter can be programmed. Error display disappear after Re-setting.



Technical Support



Mode Switch

