

# DC115B Control System Specification

Version No :A/00

## T Type specification



DC115B

- Input voltage: 12V
- Emission Frequency: 433.92MHz ± 100KHz
- Emission Power: 10 milliwatt
- Work temperature: -10°C -50°C
- Emission distance: open 200m, two walls 30m

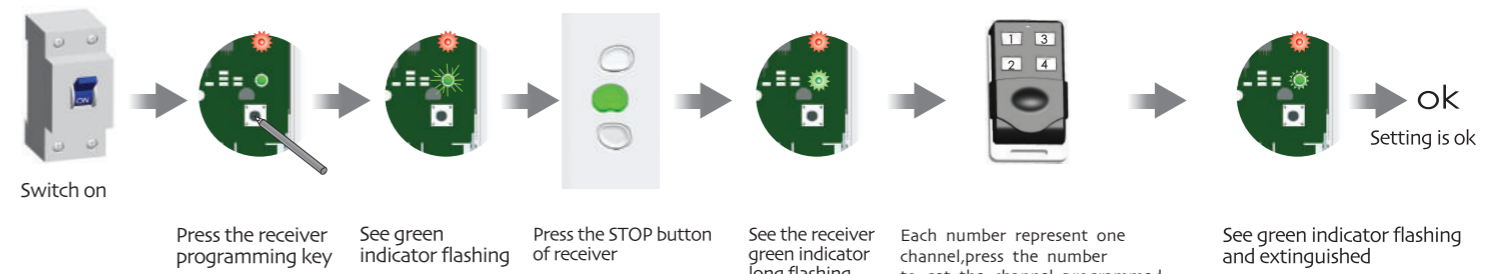
DC115B is 4-channel emitter only matchable with DC248B and DC256.

■ Notice: transmitter Do not exposed to moisture and strike, so as not to affect life. When you use transmitter, if found emission distance obviously short or less sensitive, please change another same new battery. Please have batteries for recycling.

## A Matchable DC248B set up and add emitter

Additional Function

⚠ Each channel should be programmed separately, continually press the programmed channel button, the motor move clockwise, stop and move anti-clockwise. Control the motor depend on you needs. ⚠ One receiver store 200 emitters channels at most, and one channel of emitter can control 20 receivers at most.



## A Matchable DC256 set up and add emitter

Additional Function

⚠ Each channel should be programmed separately, continually press the programmed channel button, the motor move clockwise, stop and move anti-clockwise. Control the motor depend on you needs. ⚠ One DC256 and one DC115B together make the DC257

