

- Input voltage: 12V
- Emission Frequency: 433.92MHz ± 100KHz
- Emission Power: 10 milliwatt
- Work temperature: -10°C - 50°C
- Emission distance: open 200m, two walls 30m
- Components button (P2)(up button+ stop button) is setting button, it's valid that press two button at the same time.
- Transmitter (▲) UP BUTTON
- Transmitter (■) STOP BUTTON
- Transmitter (▼) DOWN BUTTON

DC115A(F) DC14 DC61(S) DC141 DC279

DC115A(F) single channel transmitter  
 DC14 single channel transmitter  
 DC61(S) single channel transmitter  
 DC141 single channel transmitter  
 DC279 single channel transmitter

Notice: transmitter Do not exposed to moisture and strike, so as not to affect life. When you use transmitter, if found emission distance obviously short or less sensitive, please change another same new battery. Please have batteries for recycling.



All controls support 433MHz & 868MHz  
 All controls support 12V/23A & 12V/27A  
 Specific parameters to the nameplate shall prevail



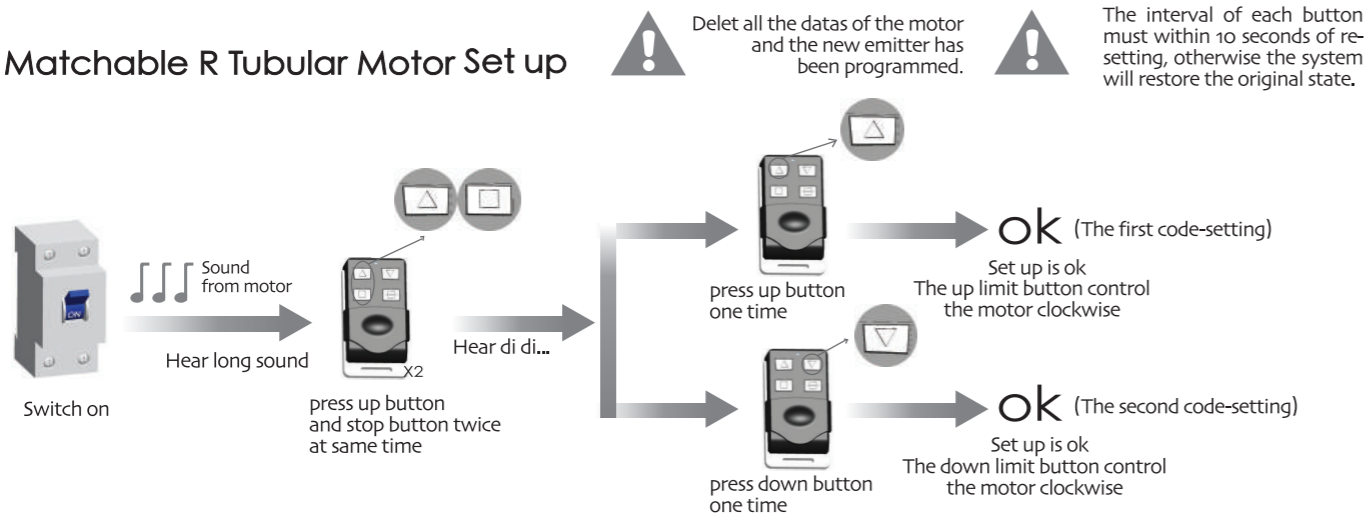
# DC115A(F) DC14 DC61(S) DC141 DC279 Control System Specification

Version No. : B/04

## A

### Matchable R Tubular Motor Set up

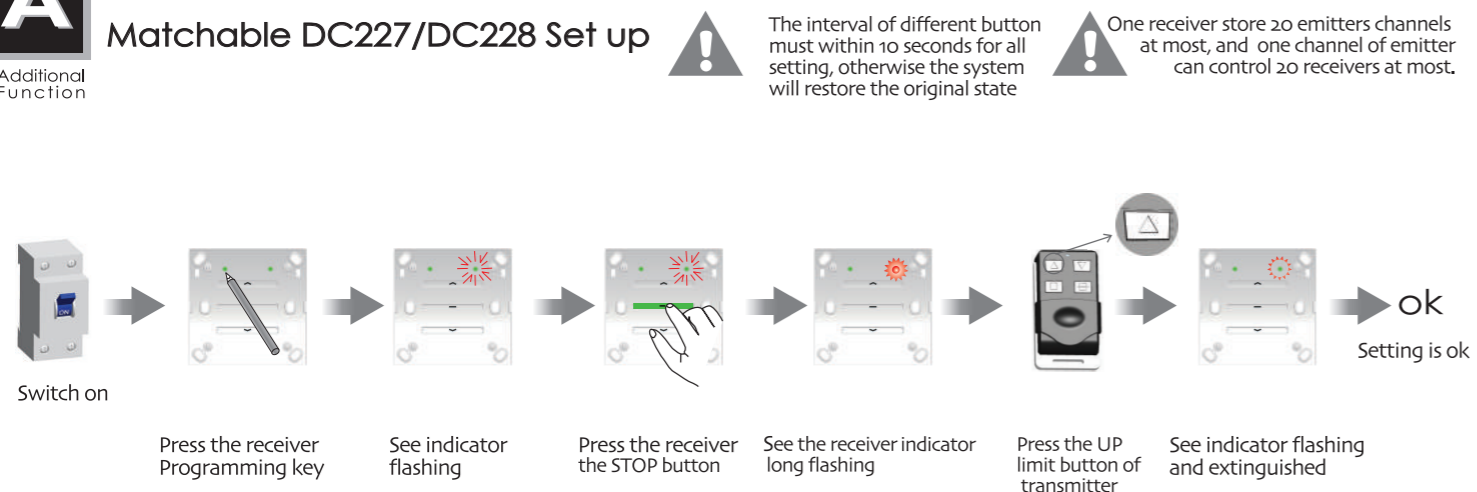
Additional Function



## A

### Matchable DC227/DC228 Set up

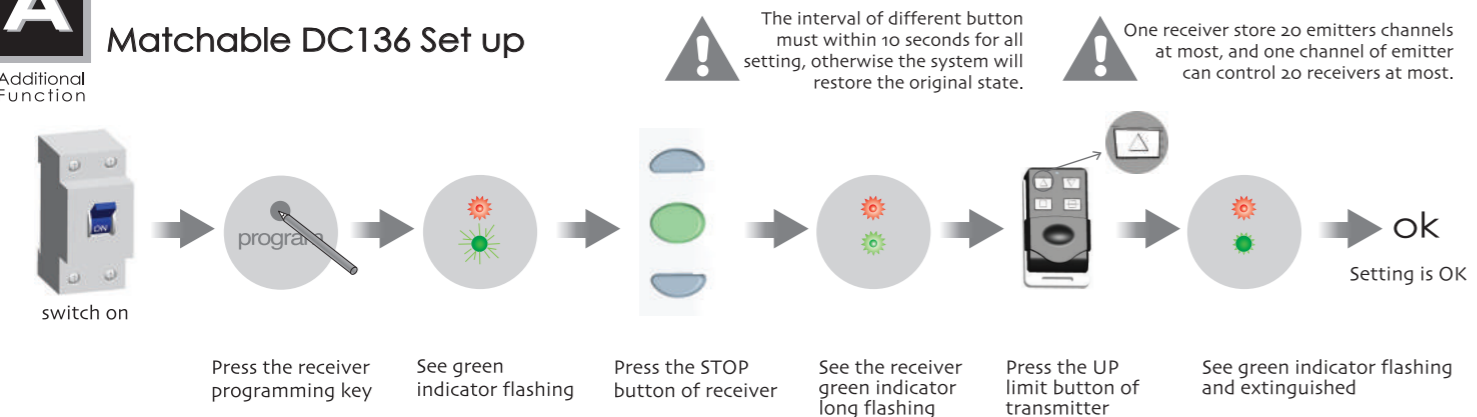
Additional Function



## A

### Matchable DC136 Set up

Additional Function



## T

### Type Specification

The self-lock key of this series can only be applied to the DC43 and DC136.

<p>DC115A(F)</p>	<p>DC14</p>	<p>DC61(S)</p>
<p>DC141</p>	<p>DC279</p>	