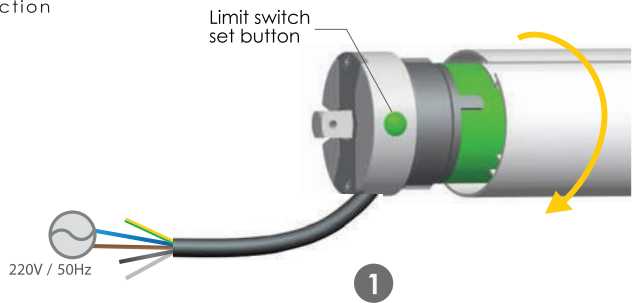


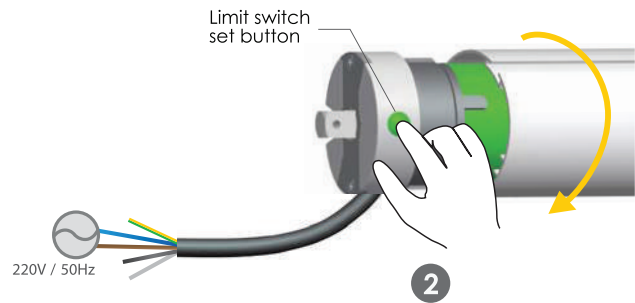


Additional Function

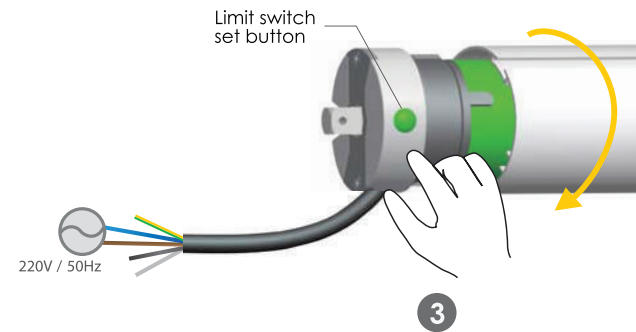
Clockwise rotation Limit switch with setting



When the brown wire and blue wire connect with 220v/50hz, the drive adapter will rotate in a clockwise direction



When the drive adapter rotate in a clockwise direction or stop (the brown wire and blue wire connect with 220v/50hz), press the setting button in the limit head, the motors will rotate in a clockwise direction



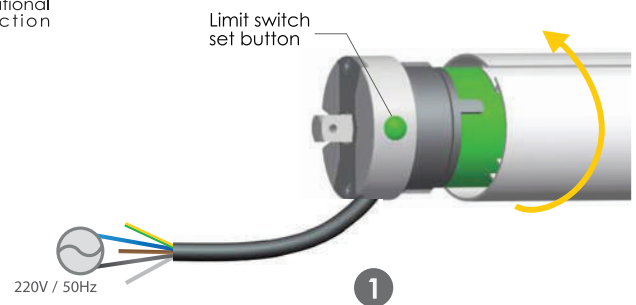
Release the setting button in the limit head namely confirm clockwise limit position

Repeat step 2 and step 3 namely can accurate setting clockwise limit position

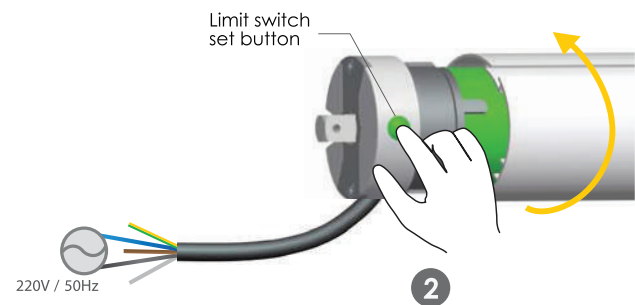


Additional Function

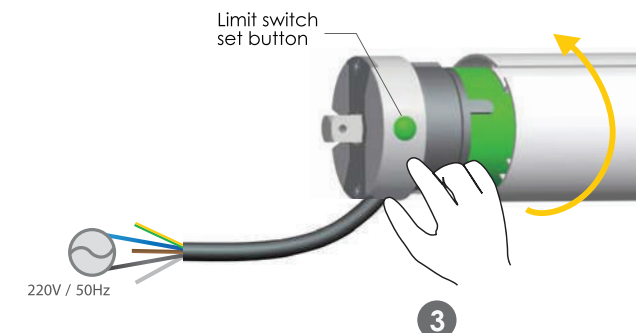
Counter-clockwise rotation Limit switch setting



When the black wire and blue wire connect with 220v/50hz, the drive adapter will rotate in a reverse direction



When the drive adapter rotate in a reverse direction or stop (the black wire and blue wire connect with 220v/50hz), press the setting button in the limit head, the motors will rotate in a reverse direction



Release the setting button in the limit head namely confirm reverse limit position

Repeat step 2 and step 3 namely can accurate setting reverse limit position



All controls support 230V/50Hz & 120V/60Hz



B: Button Electronic
Electronic Limit +
Resistance and stop function



B-type motors Tubular Motor Specification

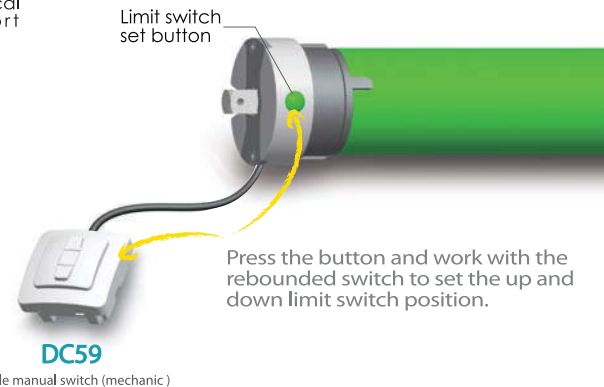
Version No. : A/00



Technical Support

Setting limit switch method

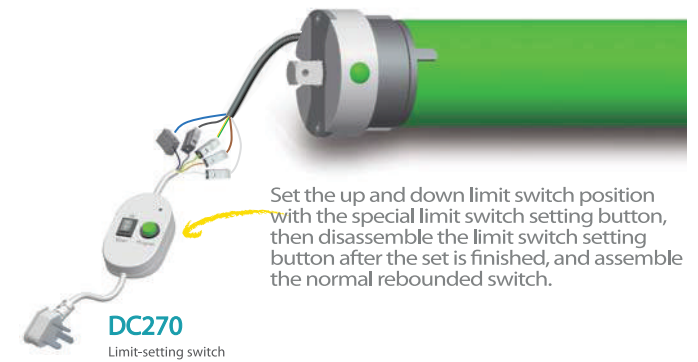
Setting limit switch method 1



Press the button and work with the rebounded switch to set the up and down limit switch position.

DC59
Single manual switch (mechanic)

Setting limit switch method 2



Set the up and down limit switch position with the special limit switch setting button, then disassemble the limit switch setting button after the set is finished, and assemble the normal rebounded switch.

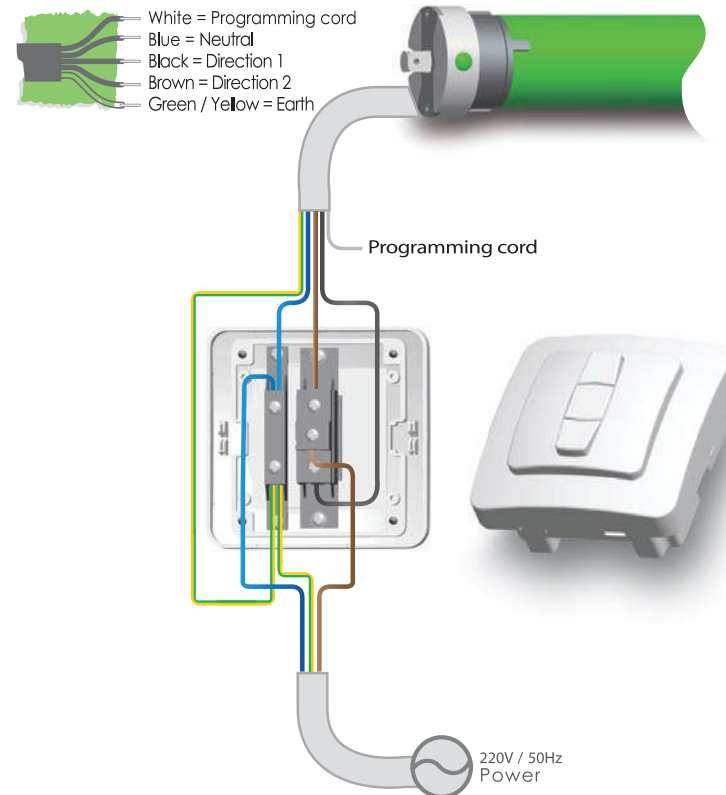
DC270
Limit-setting switch



Technical Support

Circuit installation

- White = Programming cord
- Blue = Neutral
- Black = Direction 1
- Brown = Direction 2
- Green / Yellow = Earth



Attention

