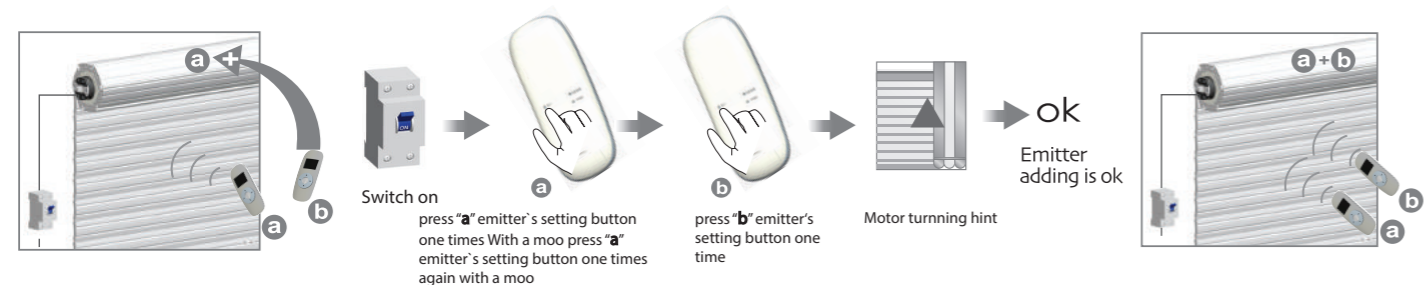




Add Emitter

Additional Function

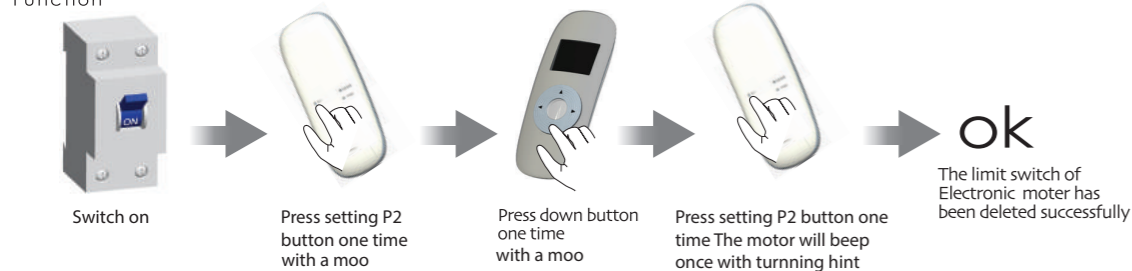


The time period for POWER ON should be 5 seconds minimum



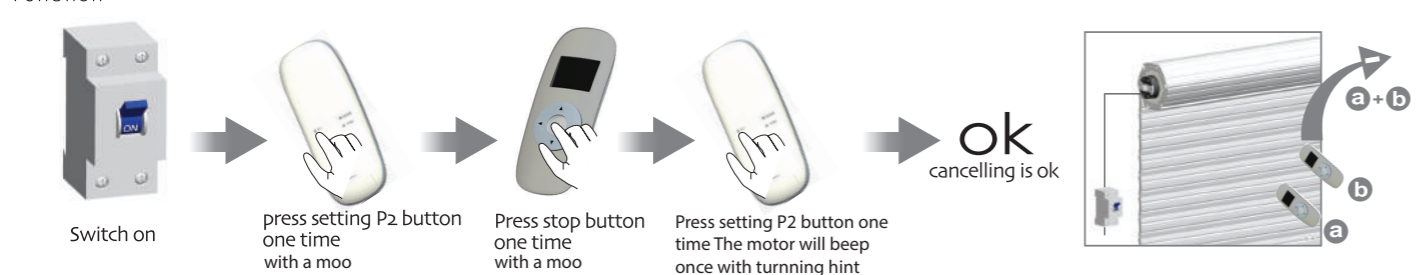
Cancel the limit

Additional Function



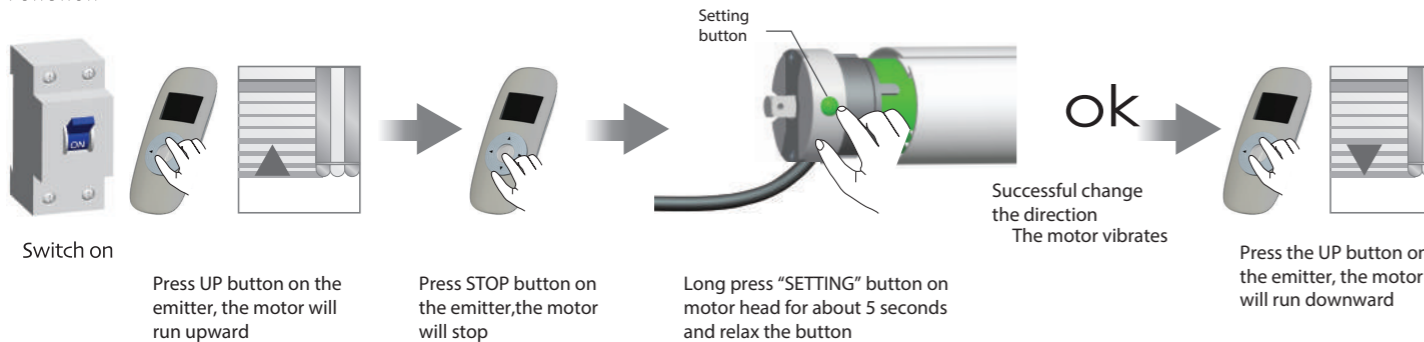
Cancel Emitter

Additional Function



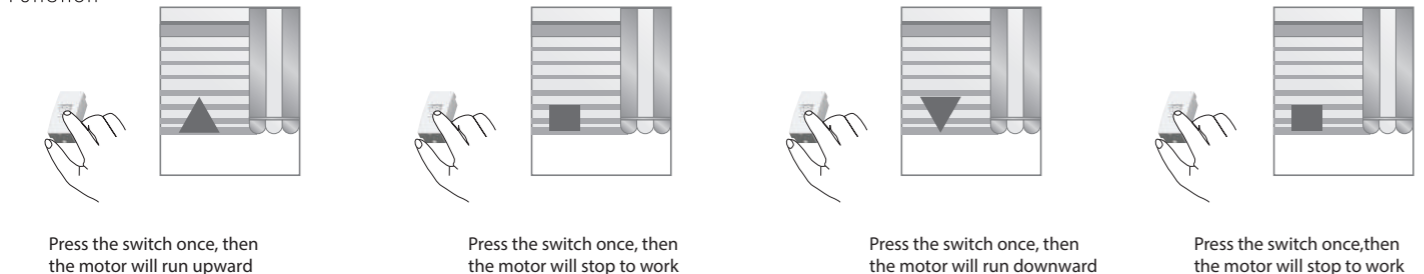
The reverse of direction setting

Additional Function



Rebound single-channel switch

Additional Function

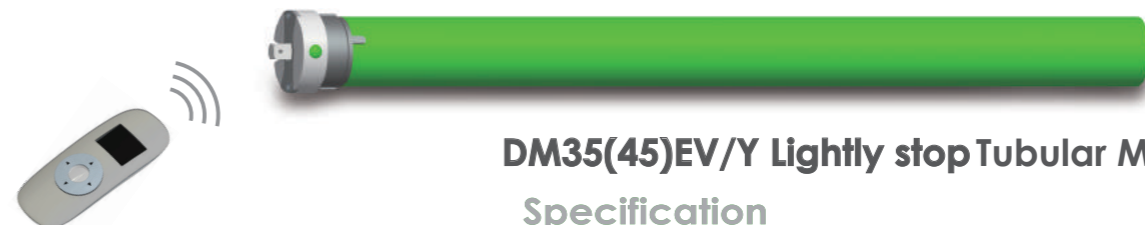


All controls support 433MHz
All controls support 230V/50Hz & 120V/60Hz



Electronic

Electronic Limit + built-in receiver
+ Lightly stop function+The third limit point setting



DM35(45)EV/Y Lightly stop Tubular Motor

Specification

Version No. : A/00



Technical Support

- One channel of emitter can control 20 receivers at most at the same time.
- One Electronic motor maximum can store 20 channels, over 20 channels, if still need add new channels, it will be repeating covered in turn from last channel.

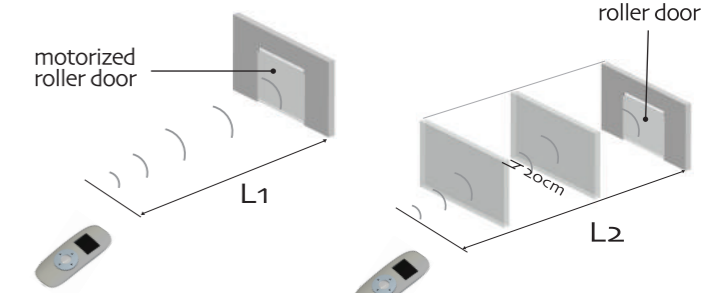
Rebound single-channel switch

Please set the limit position before use, as the setting method please see: 'set up/down limit position' as reference.

Group control programme is noneffective; deleting programme, adding programme and setting limit switch is ineffective

After changing the direction of motor, it needs to re-set programme

Control Range

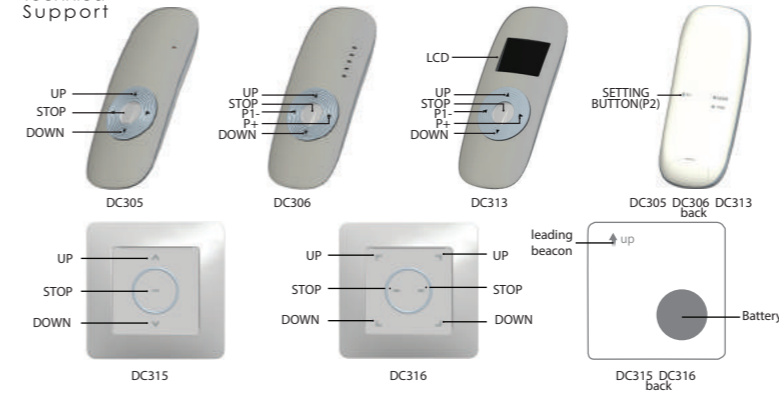


	L1 Open	L2 Partition	Emission frequency
230V/50Hz	200m	35m	433.92MHz
120V/60Hz	200m	35m	



Matchable emitter

Technical Support



Button specification

the motors of 10N/20N have the functions of automatically setting the limit position and thirty days calibrating the limit position. 30N/40N/50N types have no these functions

DM35(45)EV/Y

Setting button

Electronic Limit + Built-in Receiver
+Lightly stop function+The third limit point setting

Driving circle

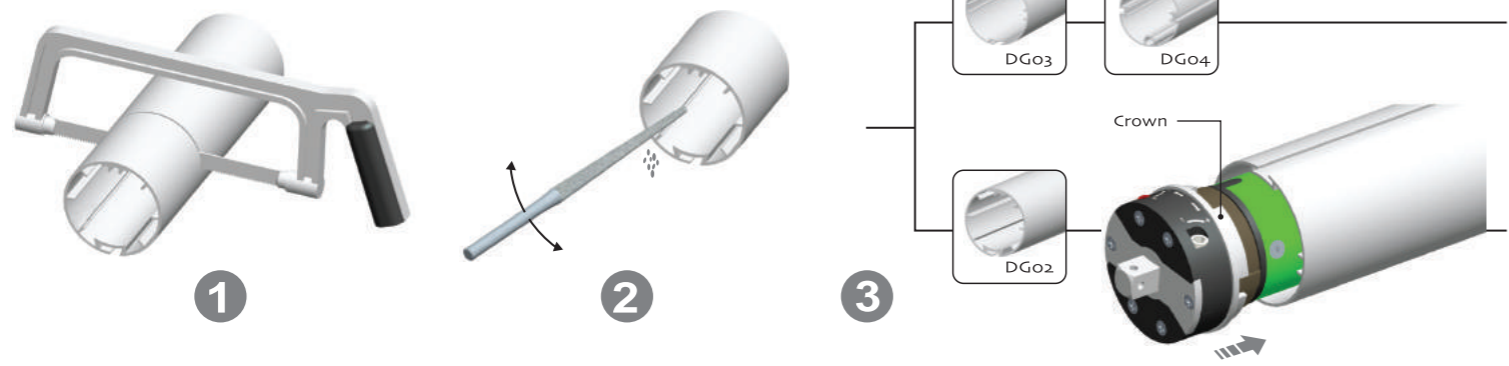


Attention

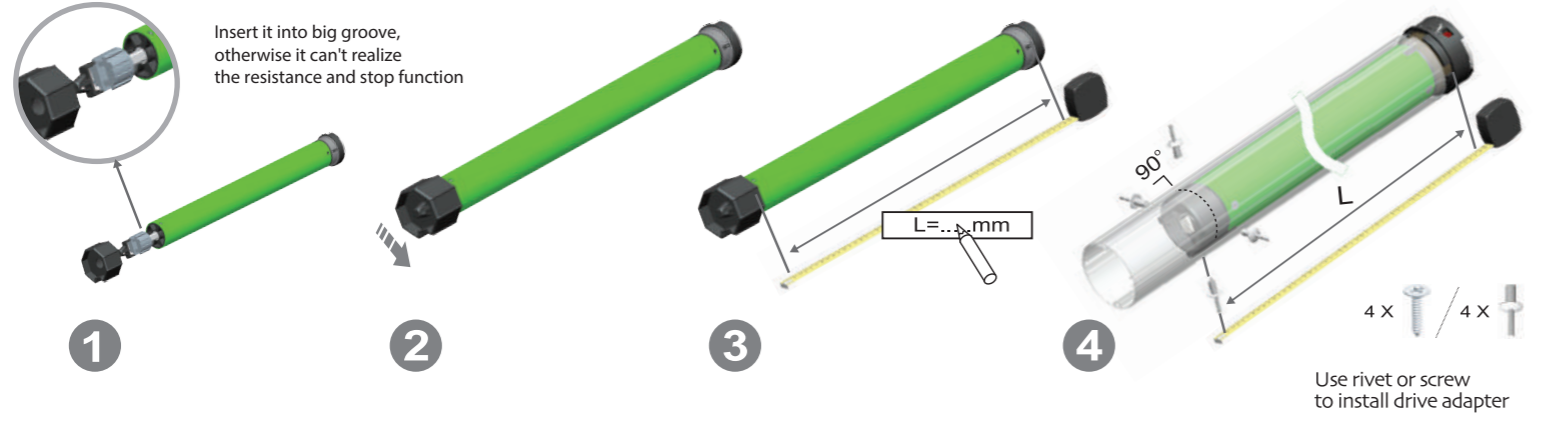


- The motor near the Down limit position, it will not move backward once it meet resistance during downward movement, in case of the dust accumulated to effect the lock function.
- This motor can be applied to wide range of voltage from AC 175V to 250V and power off the limit set has been memorized
- Please check the power supply is workable and in accordance with the electrical code before installation.
- Please check whether the shutter is smooth, vertical and move without obstacle after installation.
- after installation finished, motor can not fulfill all functions because of roller blinds essemble uneven, that time we can choose to do initialization settings, insure motor run normally after initialization.

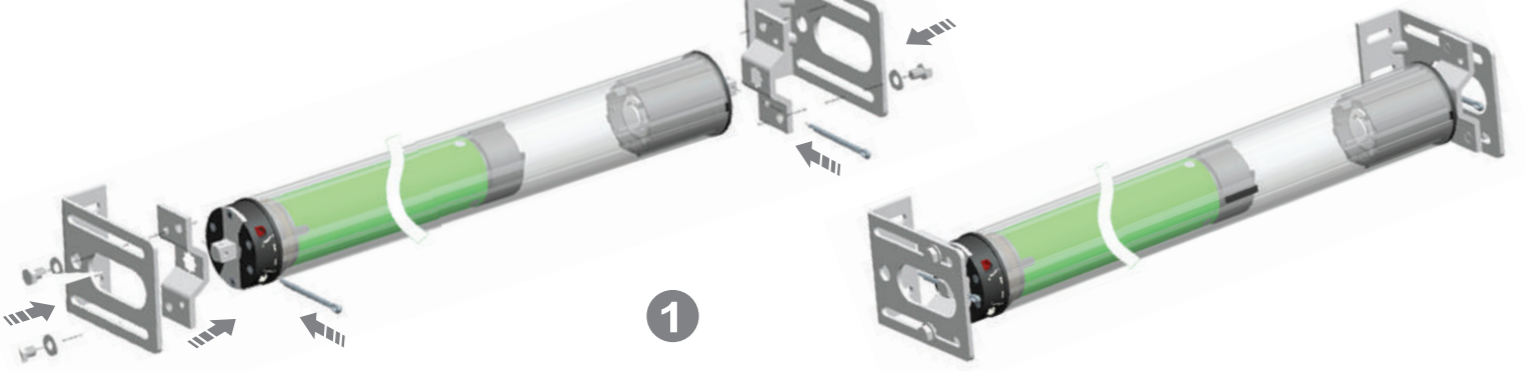
1 Crown installation



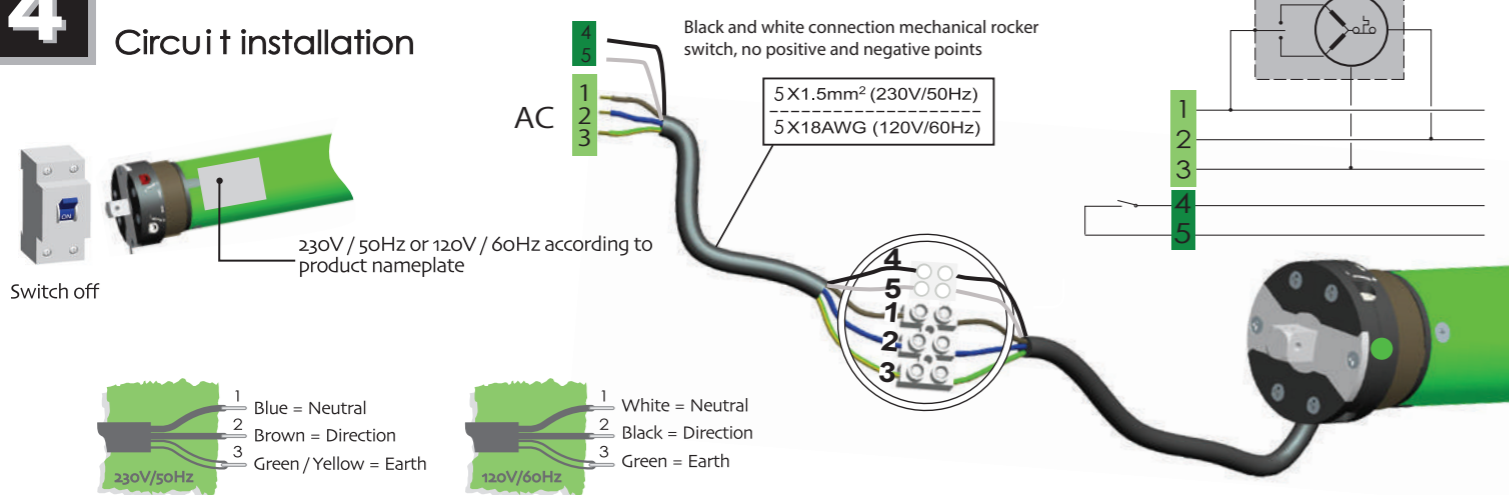
2 Drive adapter installation



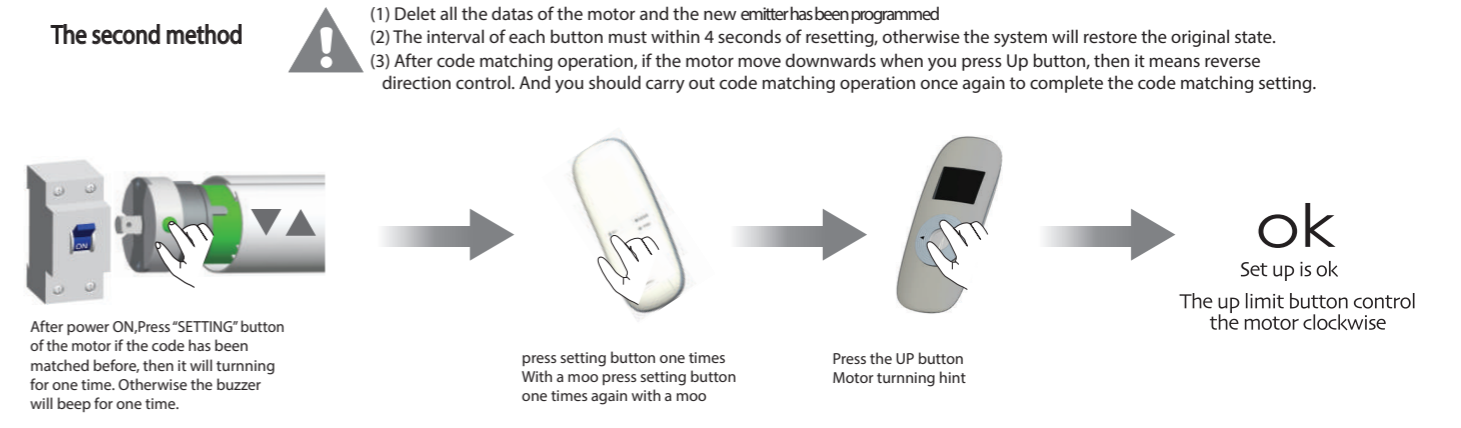
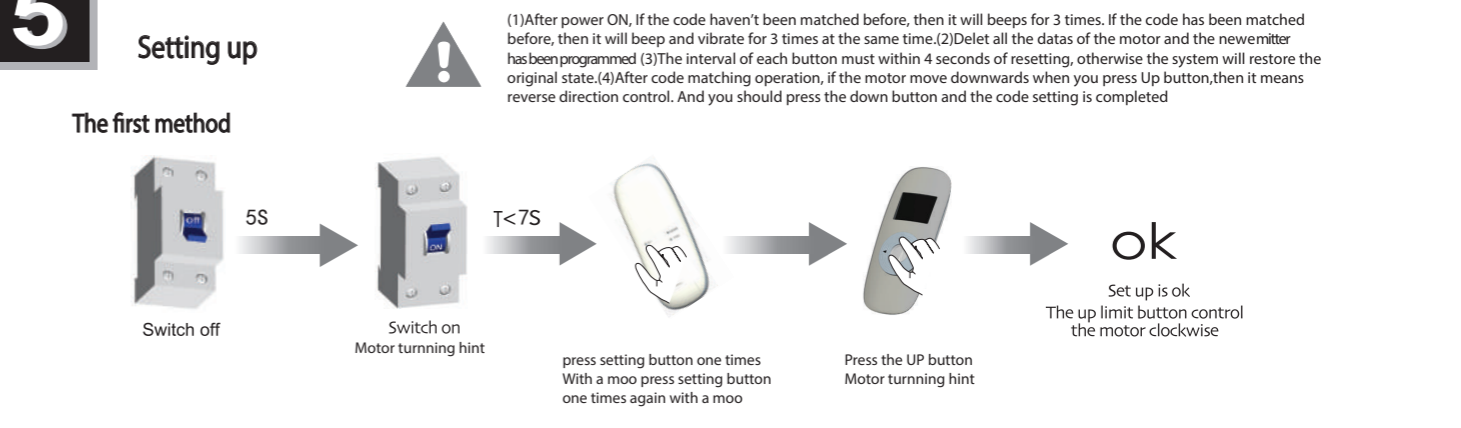
3 Bracket installation



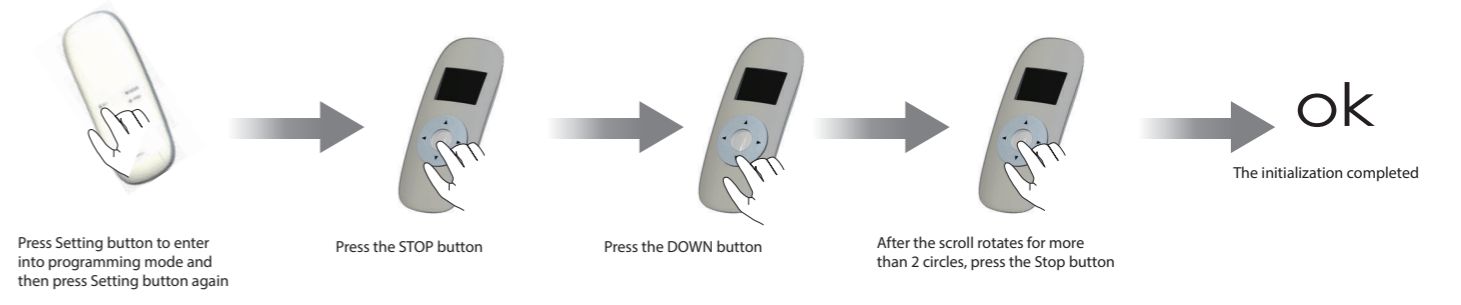
4 Circuit installation



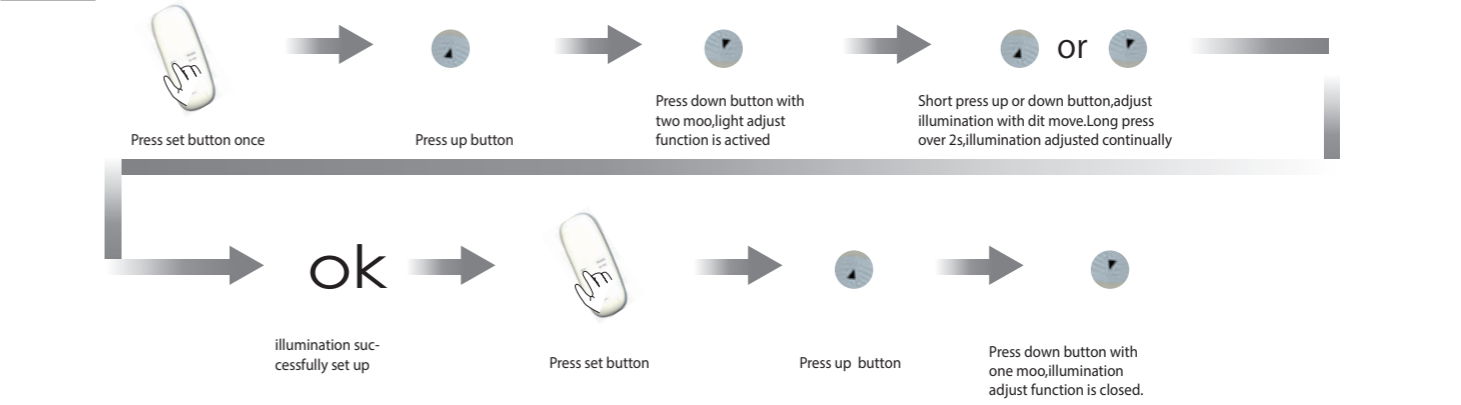
5 Setting up



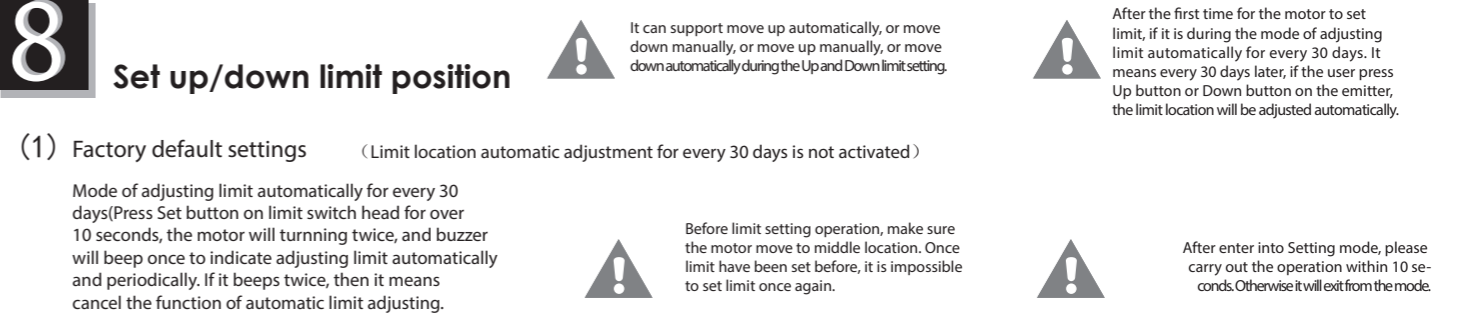
6 Initialization



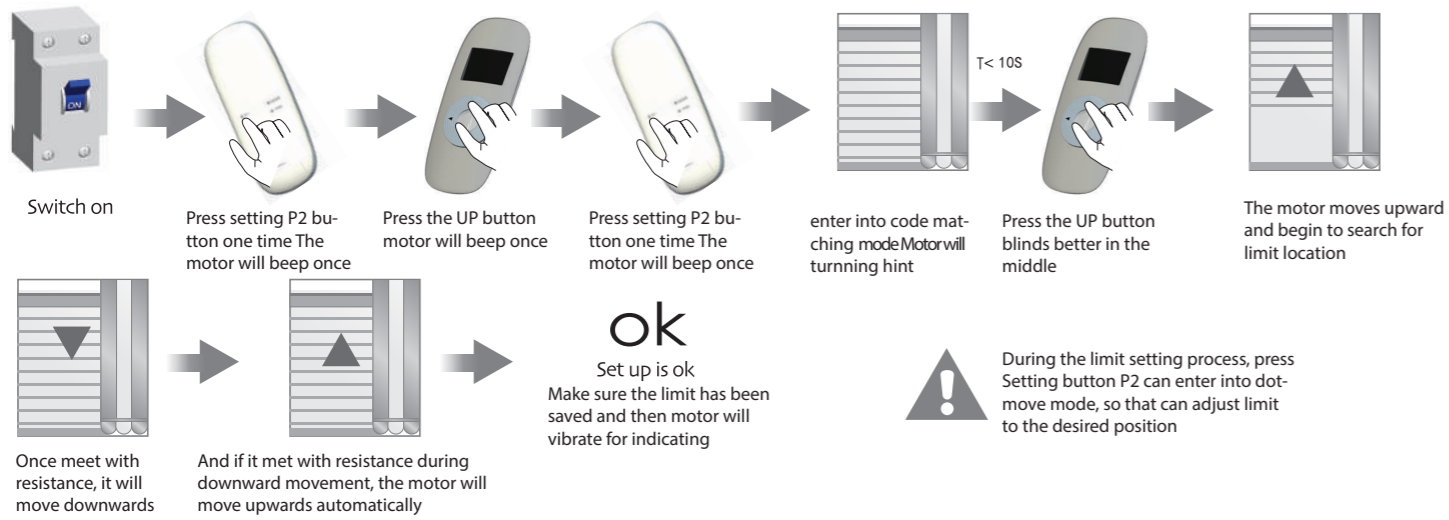
7 Light adjust function



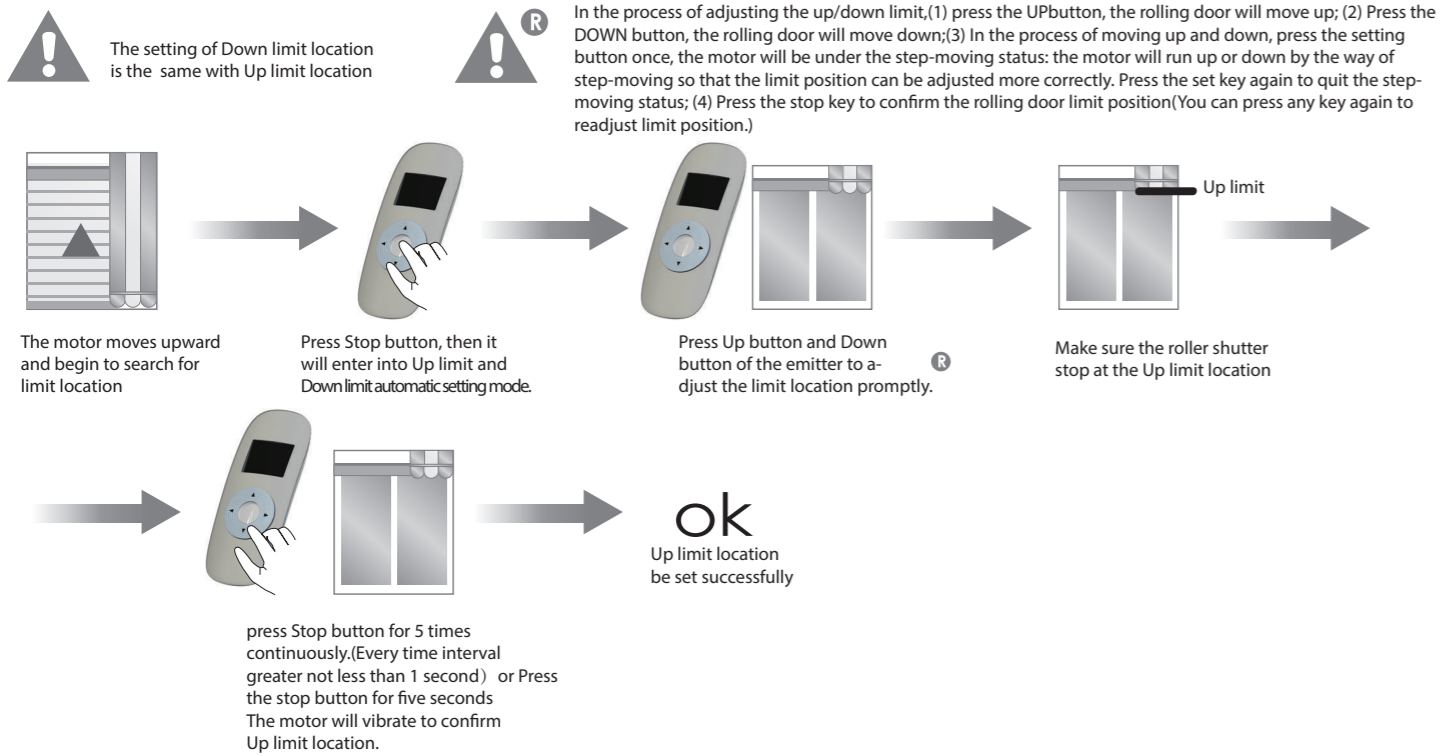
8 Set up/down limit position



(2) Up limit location and Down limit location set automatically



(3) Up and Down limit manual setting should be set before the motor moves upward and meets with resistance when the motor is in Up and Down limit automatic setting mode!



9

The third limit point setting

After the up limit and down limit setting, you can set the third limit point between them as the half open position. The third limit point will be cancelled as the cancellation of limit and code matching:
After the third limit point setting, if you want to set a new third limit, please cancel the previous third limit point.
Limit setting with hint of sound;

