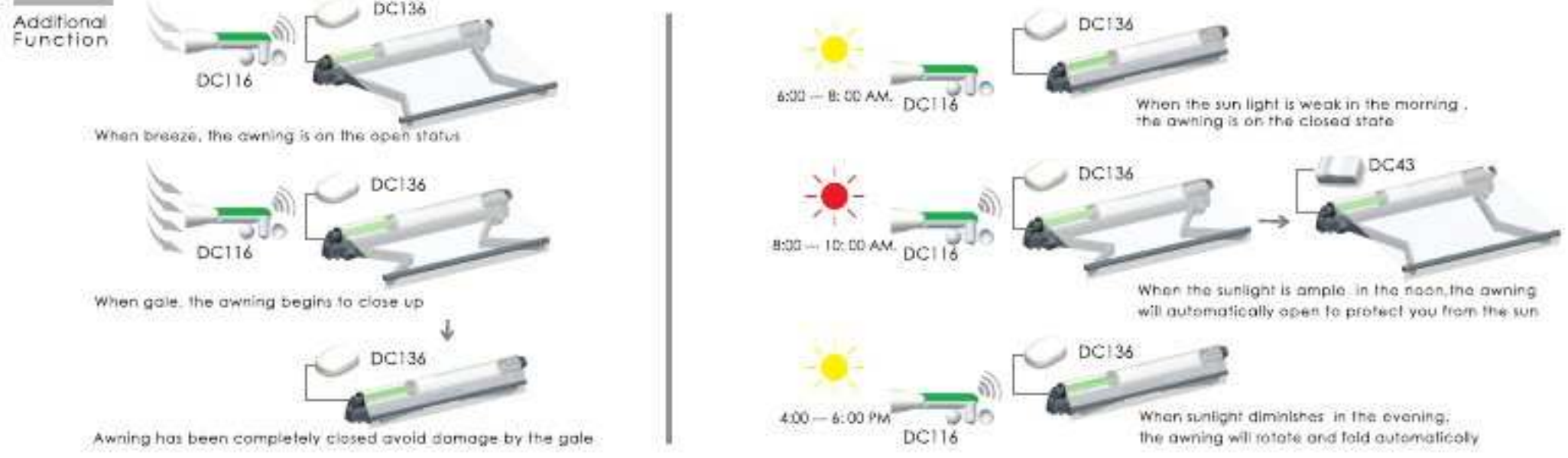


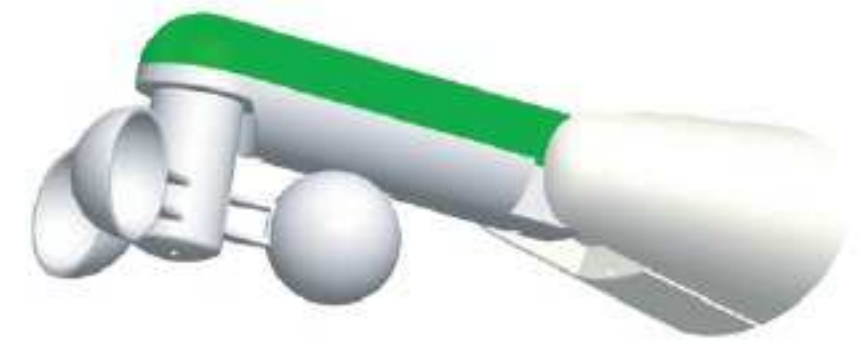


# Wind-sun sensor working principle



# Control System

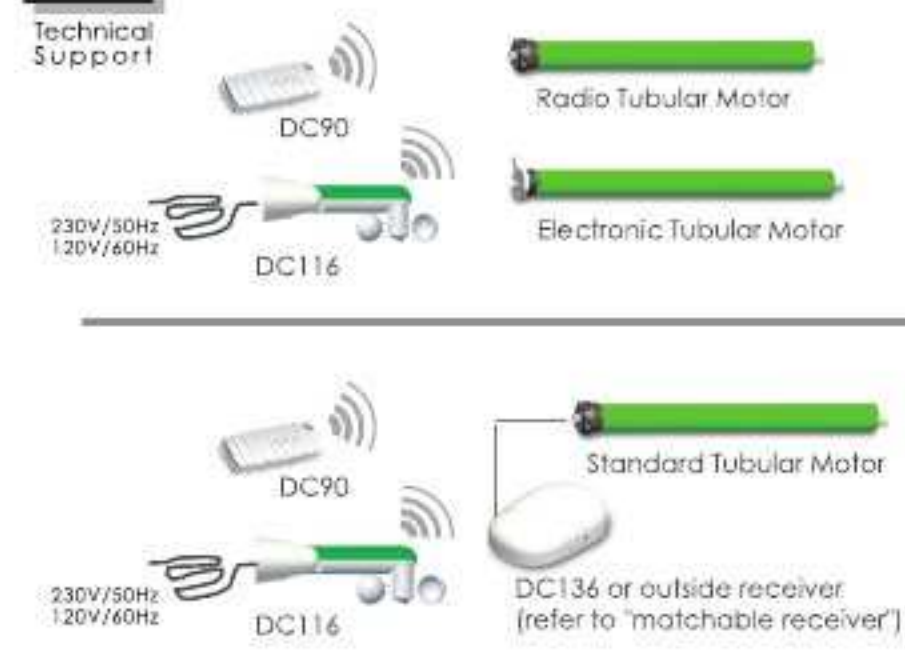
## DC116 Wind-sun sensor Specification



Version No. : A/02



### Wind-sun sensor specification



- Stable performance
  - Wireless
  - Frequency : 433.92MHz
  - Range of validity : outdoor 200 meters
  - 2 screws fixed
  - AC power : input 230V~50Hz
  - Safety code (50 million times without repeat, high security)
  - Can set three different wind scales and four different sunlight ranks
  - When the wind power is more than the setting value for 3 seconds, the sensor will automatically close awning. After closed, the sensor will not the wind in one minute.
  - When the light level is more than the setting value for two minutes, the sensor will automatically unfolds awning. When the light level does not reach the setting value for 15 minutes, the sensor will automatically close awning.
- Note 1:** Make sure to confirm that sensor DC116 has been programmed with the supporting receiver before use.
- Note 2:** Make sure that the upward button on the transmitter will make the awning close before use.



### Wind-sun sensor grade adjusting reference

**Additional Function**

The above grades equal to

Wind grade reference	Light grade reference
0 / 1 grade 15km/h	0 grade CLOSE
2 grade 30km/h	1 grade 15KLUX
3 grade 45km/h	2 grade 30KLUX
	3 grade 45KLUX
	4 grade 60KLUX

1: When the grade is "0", "1", the wind reaches over 15Km / h, the awning will fold, LED flashing

2: When the grade is "2", the wind reaches over 30Km / h, the awning will fold, LED flashing

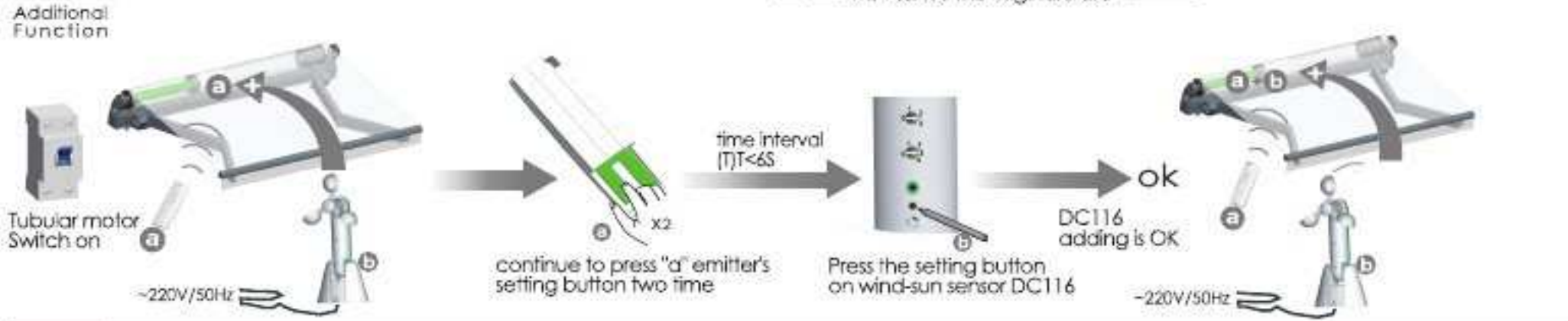
3: When the grade is "3", the wind reaches over 45Km / h, the awning will fold, LED flashing

The above grades equal to

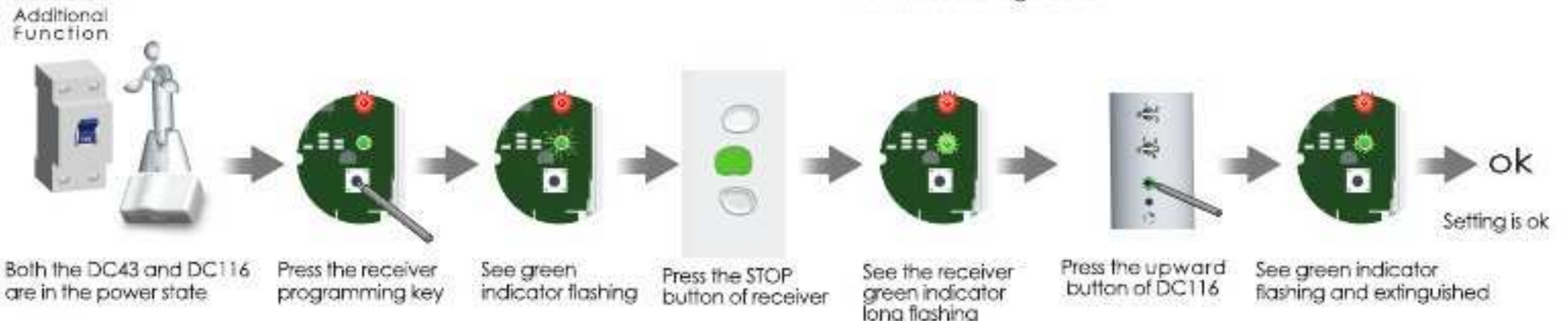
- When the grade is "0", the light will close
- When the grade is "1", the light reaches over 15 KLUX, the awning will open, LED flashing
- When the grade is "2", the light reaches over 30 KLUX, the awning will open, LED flashing
- When the grade is "3", the light reaches over 45 KLUX, the awning will open, LED flashing
- When the grade is "4", the light reaches over 60 KLUX, the awning will open, LED flashing



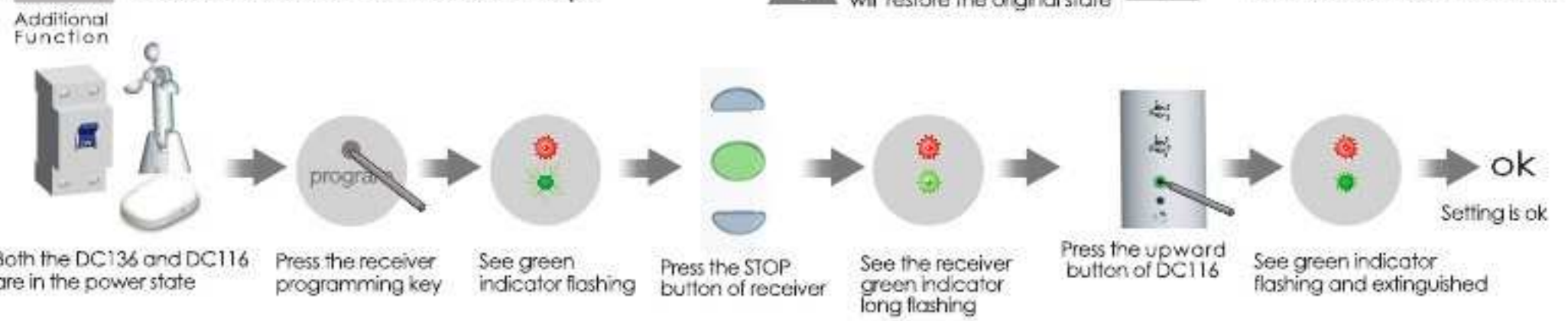
### Matchable R/E/ED Tubular Motor Set up



### Matchable DC43 Set up



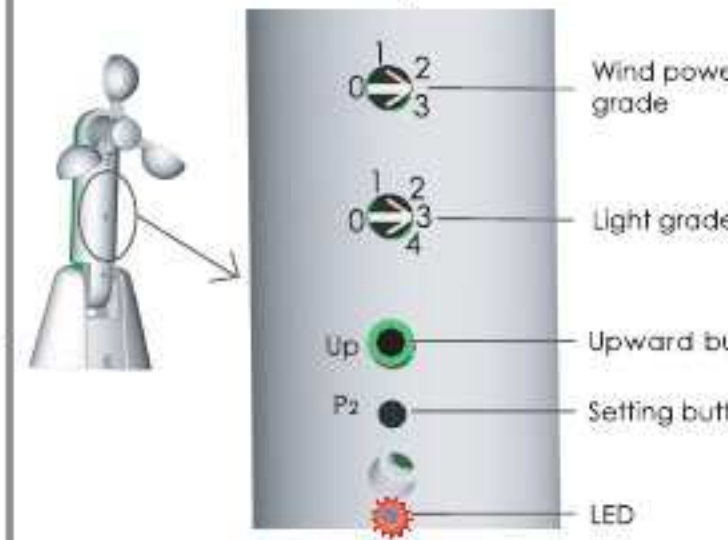
### Matchable DC136 Set up



### Matchable receiver



### DC116 Button specification



### The best installation position

